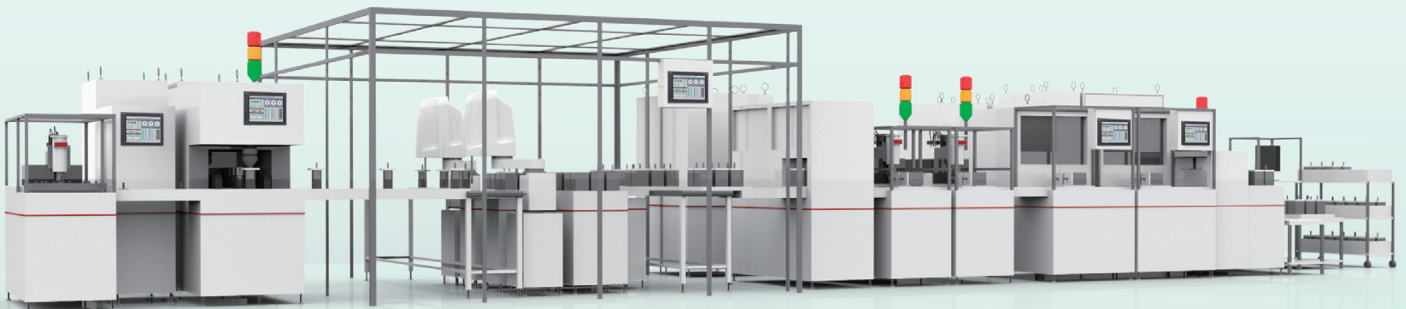


## GOT Smart Web-based Remote Solutions

# GOT *Mobile*

Monitor your worksite anytime, anywhere.

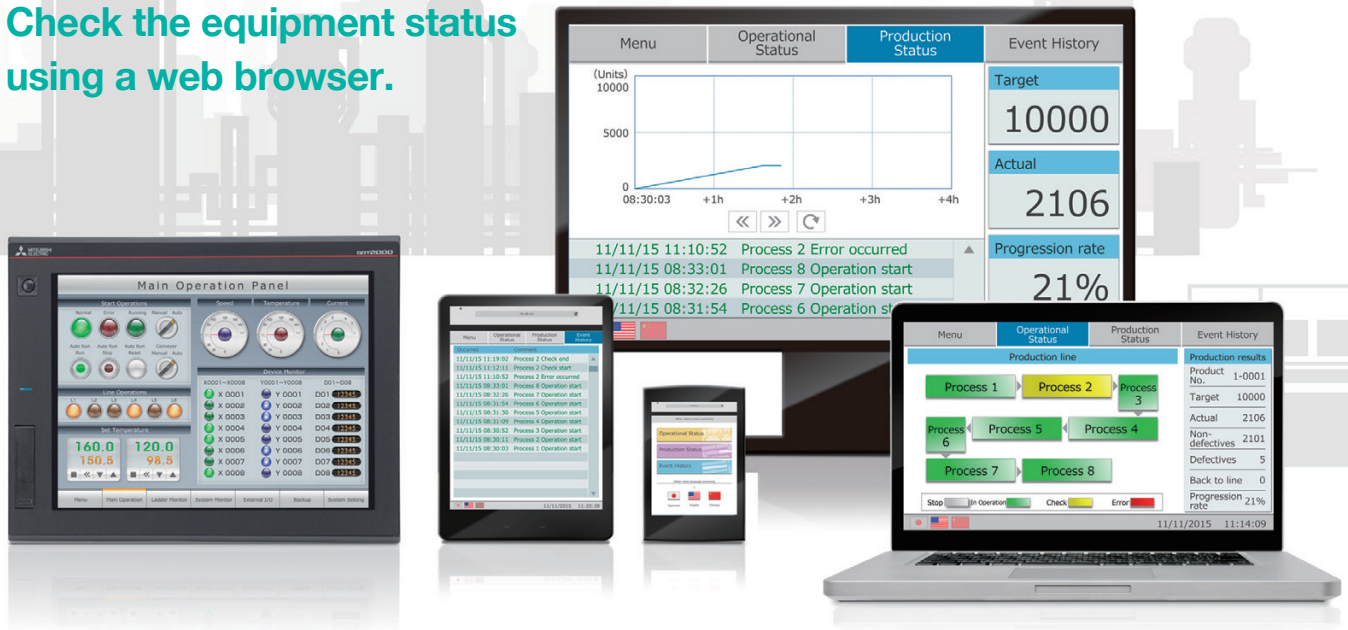


The GOT Mobile function offers remote equipment monitoring.

# GOT Mobile

Monitor your worksite anytime, anywhere.

Check the equipment status using a web browser.



The GOT Mobile function improves visualization accessibility and reduces total cost of own

## Improve productivity

Monitor production from outside of the clean room

The status of equipment can be monitored using tablets from outside of the clean room.

Production site



Monitoring connected devices on a tablet via GOT

## Reduce downtime

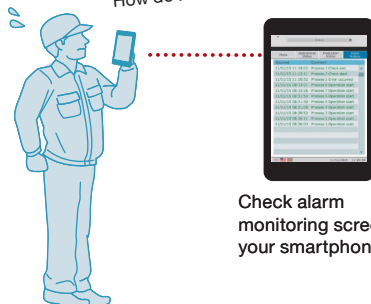
Monitor production remotely

The status of equipment can be monitored remotely with your smartphone. In addition, you can view maintenance manuals to quickly check error details and find solutions.

Production site



An error is occurring in process 2. How do I deal with it?



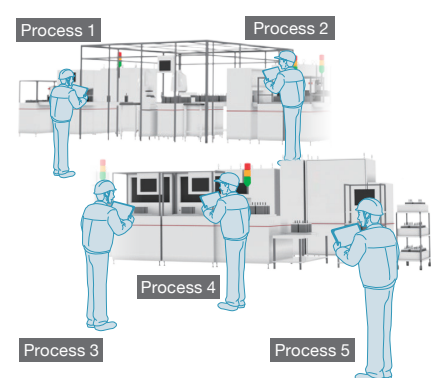
Check alarm monitoring screen on your smartphone

## Improve setup procedure

Monitor production by multiple operators

When the equipment is large, up to five operators can efficiently work at the same time to check and make settings.

Production site

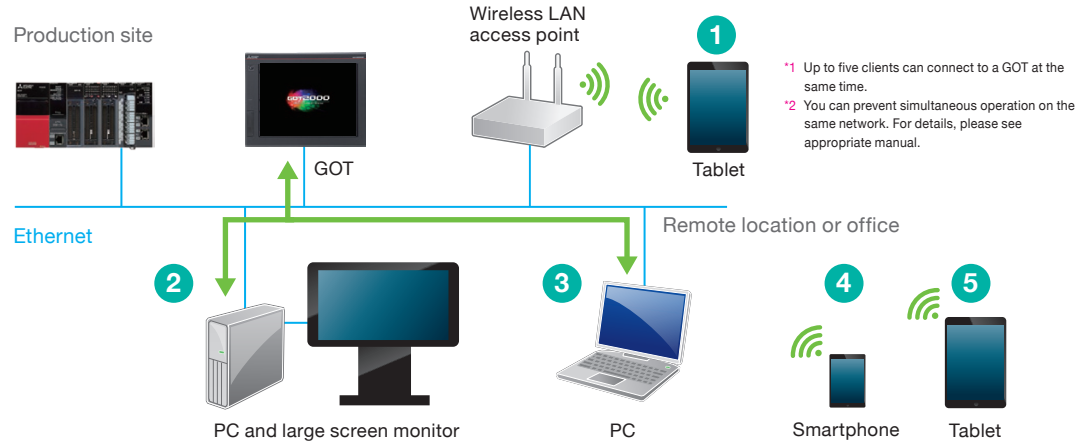


Each operator can efficiently check a different screen.

## GOT Mobile Features

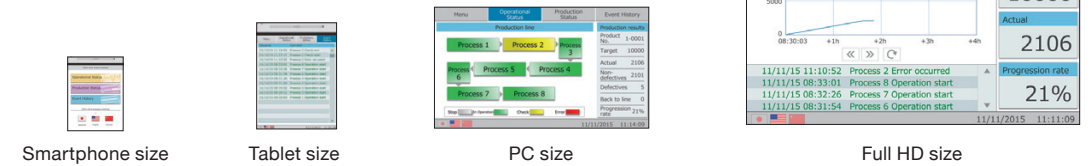
**Five information devices can access a GOT at the same time.\*1**

Each information device can display and operate a different screen.\*2



**Easily change screen sizes depending on used device.**

You can design screens easily using the GOT screen design software, GT Works3.



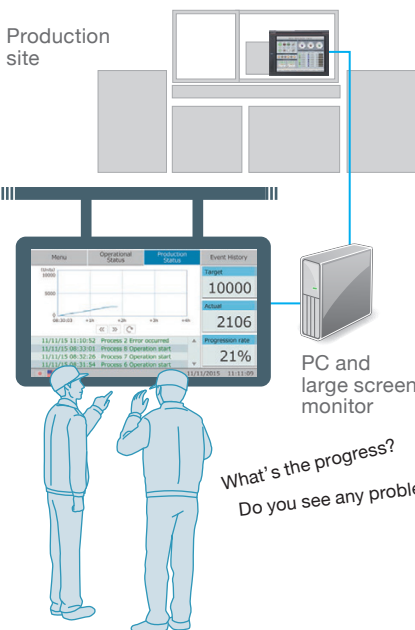
## Partnership... Mitsubishi FA Integrated Solution



### Increase production rate

#### Monitor production on a large screen

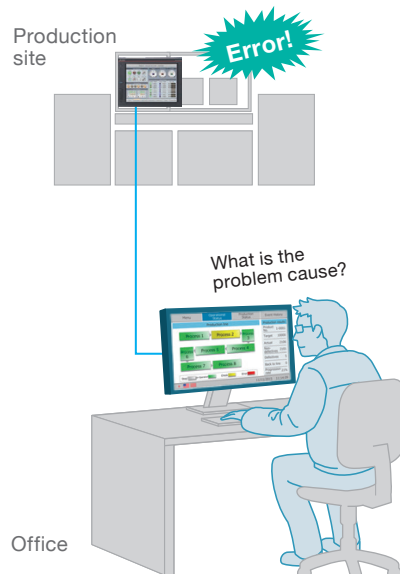
The function visualizes your production site by showing the production targets and results on a large Andon screen.



### Improve maintenance

#### Monitor production from your office

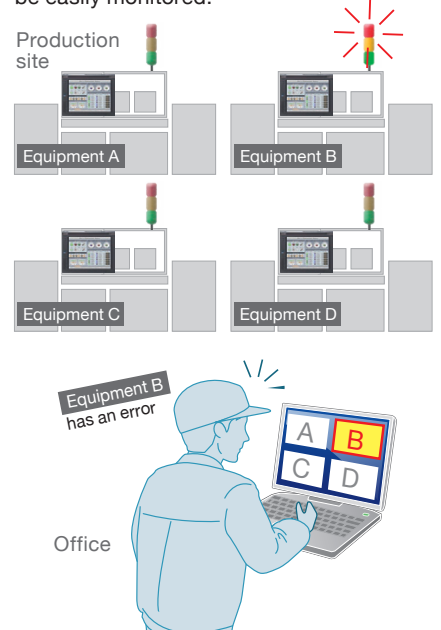
The status of equipment can be monitored on your PC via GOT on the production site.



### Improve maintenance

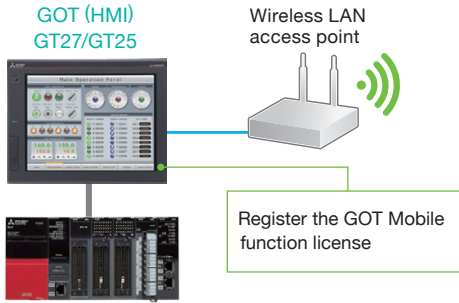
#### Monitor production with one PC

One PC can be connected to several GOTs to check the condition of equipment. Even large-scale systems can be easily monitored.



# GOT Smart Web-based Remote Solutions

## System configuration



### Tablets, mobile terminals, PCs

- Browser requirements:
- Google Chrome for Android version 43 or later
  - Google Chrome for Windows version 43 or later
  - Safari for iOS 8.0 or later
- \* For details, please see Technical Bulletin No. GOT-A-0090.

### GOT Mobile function license (GT25-WEBSKEY) \* 1 license is required for 1 GOT unit.

This license is required to use the GOT Mobile function. The function allows you to monitor and operate connected devices from tablets, mobile terminals, and PCs using web browsers.

## Specifications

Classification	Model	Screen size	Display section Display color	Panel color	Power	Remarks
GT27	GT2715	GT2715-XTBA	15" XGA	Black	100 to 240 V AC	Multimedia & Video/RGB compatible Multi-touch compatible
		GT2715-XTBD			24 V DC	
	GT2712	GT2712-STBA	12.1" SVGA	Black	100 to 240 V AC	
		GT2712-STBD			24 V DC	
		GT2712-STWA			100 to 240 V AC	
	GT2710	GT2712-STWD	10.4" SVGA	White	24 V DC	
		GT2710-STBA			100 to 240 V AC	
		GT2710-STBD			24 V DC	
		GT2710-VTBA			100 to 240 V AC	
		GT2710-VTBD			24 V DC	
		GT2710-VTWA			100 to 240 V AC	
	GT2710-VTWD	24 V DC				
	GT2708	GT2710-VTBD	10.4" VGA	Black	100 to 240 V AC	
GT2708-STBA		24 V DC				
GT2708-STBD		100 to 240 V AC				
GT2708-VTBA		24 V DC				
GT2705	GT2708-VTBD	8.4" SVGA	Black	100 to 240 V AC		
	GT2705-VTBD			24 V DC		
GT25	GT2512	12.1" SVGA	Black	100 to 240 V AC	TFT color 65536 colors	
				GT2512-STBD		24 V DC
				GT2512F-STNA		100 to 240 V AC
				GT2512F-STND		24 V DC
	GT2510	10.4" VGA	Black	100 to 240 V AC		
				GT2510-VTBA		24 V DC
				GT2510-VTBD		100 to 240 V AC
				GT2510-VTWA		24 V DC
				GT2510F-VTNA		100 to 240 V AC
				GT2510F-VTND		24 V DC
	GT2508	8.4" VGA	White	100 to 240 V AC		
				GT2508-VTBA		24 V DC
				GT2508-VTBD		100 to 240 V AC
				GT2508-VTWA		24 V DC
				GT2508F-VTNA		100 to 240 V AC
				GT2508F-VTND		24 V DC

## License

Product name	Model	Specifications
GOT Mobile function license*1	GT25-WEBSKEY-1	1 license
	GT25-WEBSKEY-5	5 licenses
	GT25-WEBSKEY-10	10 licenses
	GT25-WEBSKEY-20	20 licenses

\*1 1 license is required for 1 GOT unit.

### ⚠ Precautions for safe use

- To use the products given in this document, always read the related manuals before starting to use them.
- If the GOT Mobile function is used to perform remote control of control equipment, the field operator may not notice the remote control, possibly leading to an accident.
- In addition, a communication delay or interruption may occur depending on the network environment, and remote control of control equipment cannot be performed normally in some cases.
- Before using the above functions to perform remote control, fully grasp the circumstances of the field site and ensure safety.

### ™ Trademarks and registered trademarks

- Windows is a registered trademark or trademark of Microsoft Corporation in the United States, Japan and other countries.
- Ethernet is a registered trademark of Xerox Corporation in the United States.
- Android and Google Chrome are trademarks or registered trademarks of Google Inc.
- IOS is a trademark or registered trademark of Cisco in the U.S. and other countries and is used under license.
- Safari is a trademark of Apple Inc., registered in the U.S. and other countries.
- All products and company names used herein are either trademarks or registered trademarks of their respective owners.

The release date varies depending on the product and your region. For details, please contact your local sales office.

The actual color may differ slightly from the pictures in this catalog. The actual display may differ from what are shown on GOT screen images.

## MITSUBISHI ELECTRIC CORPORATION

HEAD OFFICE: TOKYO BLDG., 2-7-3, MARUNOUCHI, CHIYODA-KU, TOKYO 100-8310, JAPAN  
 NAGOYA WORKS: 1-14, YADA-MINAMI 5, HIGASHI-KU, NAGOYA, JAPAN

Country/Region Sales office  
 USA .....+1-847-478-2100  
 Mexico .....+52-55-3067-7511  
 Brazil .....+55-11-4689-3000  
 China .....+86-21-2322-3030  
 Taiwan .....+886-2-2299-2499  
 Korea .....+82-2-3660-9530

Singapore .....+65-6473-2308  
 Thailand .....+66-2682-6522 to 31  
 Indonesia .....+62-21-3192-6461  
 Vietnam .....+84-8-3910-5945  
 India .....+91-20-2710-2000  
 Australia .....+61-2-9684-7777

Germany .....+49-2102-486-0  
 UK .....+44-1707-28-8780  
 Italy .....+39-039-60531  
 Spain .....+34-935-65-3131  
 France .....+33-1-55-68-55-68  
 Czech .....+420-251-551-470

Turkey .....+90-216-526-3990  
 Poland .....+48-12-347-65-00  
 Russia .....+7-812-633-3497  
 South Africa .....+27-11-658-8100