

**Industrial Computer
MELIPC Series MI3000**

MELIPC MI3000

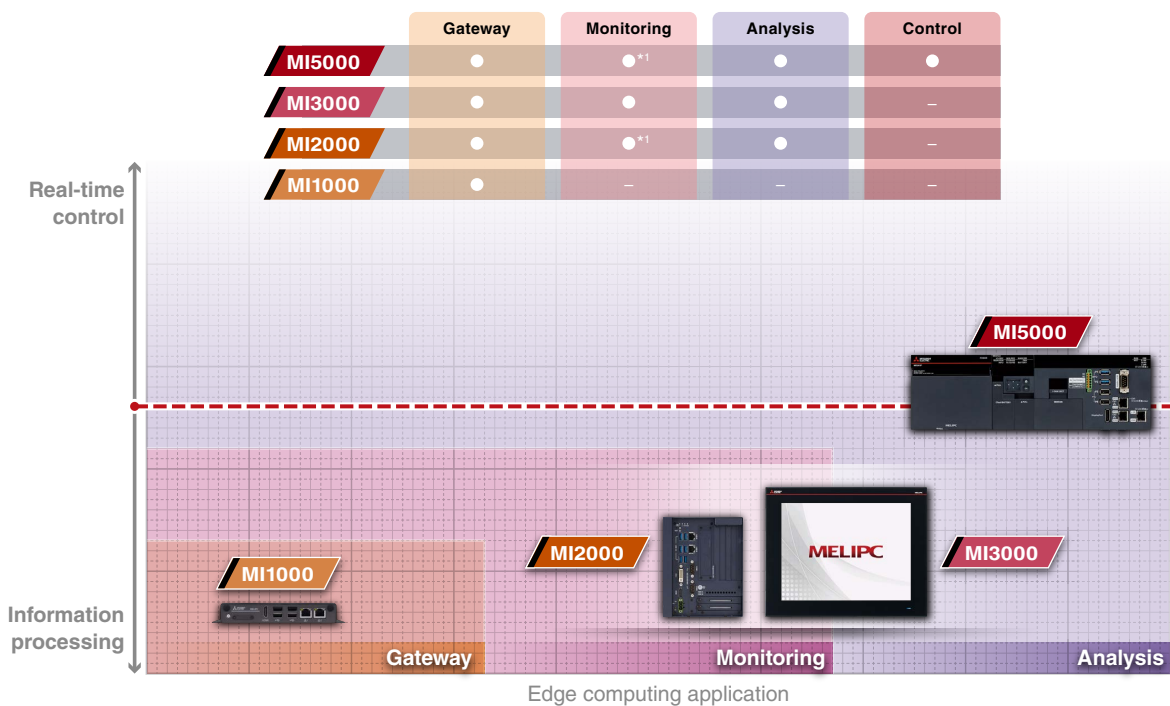
Give a shape to your ideas



MELIPC



The MELIPC realizes “real-time control” for device control and “Edge computing” enabling data collection/analysis in the middle level between the IT system and shop floor. A wide range of products from a high-end model supporting CC-Link IE Field Network capable of high performance processing and high-speed communications to simple and compact range models are available. The MELIPC corresponds with requirements such as real-time control, preventative maintenance, and quality improvement on the shop floor, contributing to productivity enhancement through utilization of production data.



*1. Can be displayed on an external monitor.

MI5000

Windows®

VxWorks®

Edgecross

Data Collector

MI Configurator



Windows® and VxWorks® pre-installed

The module can run two operating systems at the same time, VxWorks® with deterministic performance for device control and data collection and Windows® for displaying analysis results of collected data, allowing superior processing according to OS. This feature allows one module to realize device control and information processing which were previously managed using a computer and dedicated device, reducing system configuration cost and space for devices.

CC-Link IE Field Network realizes highly accurate device control

Control data and production data of devices can be communicated at 1 ms via CC-Link IE Field Network, realizing highly accurate device control and high-speed production data collection. The module is equipped with CC-Link IE Field Network port and CC-Link IE Field Network Basic port which enable easy connection with compatible products just by setting.



MI3000

MI2000

MI1000

MI3000

Windows®

Edgecross

Data Collector

GT SoftGOT2000

MI2000/MI1000

Windows®

Edgecross

Data Collector

Display and operate collected data **MI3000**

Large screen and high resolution LCD panel is equipped as standard for data display and touch operation. Light-touch operation is realized with a PCAP touch panel that is widely used for smartphones and tablet devices. The touch panel with high transmittance offers clear and high visibility display. In addition, pre-installed software GT SoftGOT2000*1 enables the same monitoring functions as the GOT2000 Series.

*1. GT SoftGOT2000 license key (for USB port) (sold separately) is not required.

Data analysis and large volume data storage **MI3000** **MI2000**

Intel® Core™ i3 CPU realizes simple analysis/diagnosis/monitoring of collected data, contributing to quality improvement. Equipped with 2.5-inch HDD/SSD slot*2 and PCI Express®/PCI slot*3, a large volume of data can be stored and functions can be extended.

*2. The 2.5-inch HDD/SSD slot on MI2000 only.

*3. Only PCI Express® on MI3000.

Compact size realizes computer functions **MI1000**

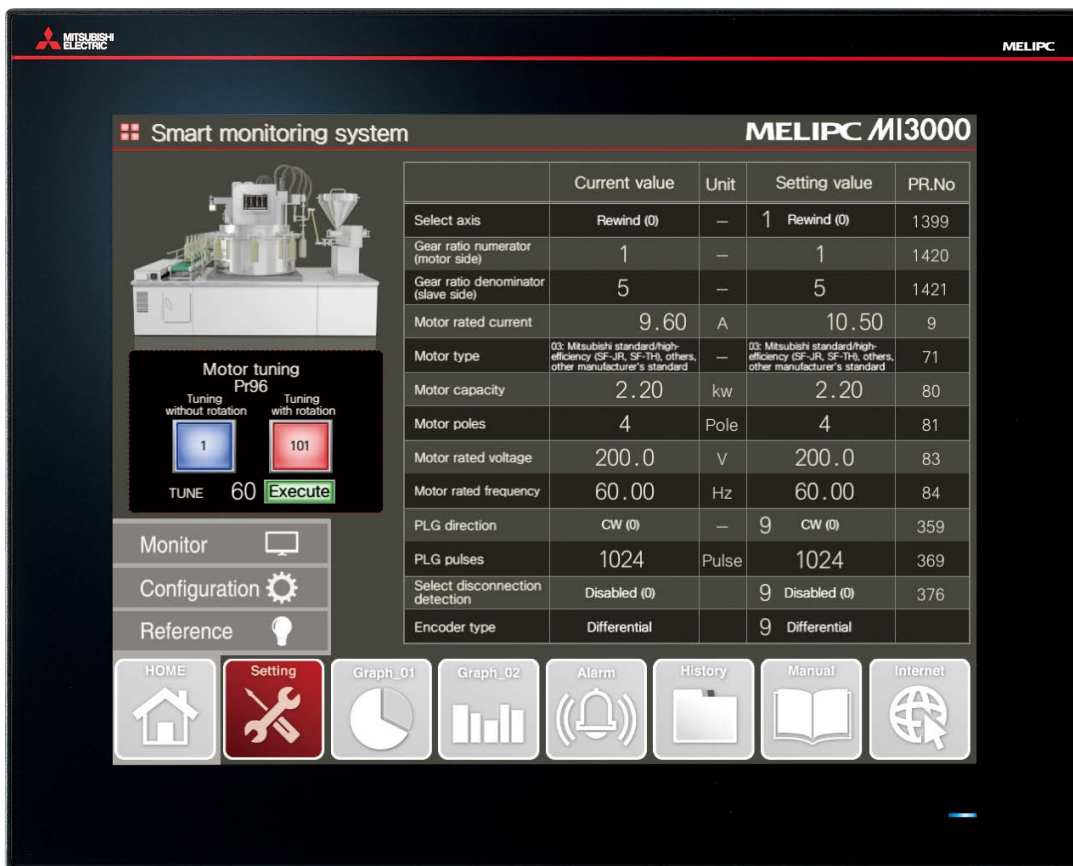
Energy saving Intel® Atom™ E3826 in a compact 26-mm-tall module enables computer functions. Installation in the existing facility is easy as it requires minimal space, contributing to network connection of facilities.

Start IoT solutions with MI3000 by connecting shop floors with IoT

MI3000

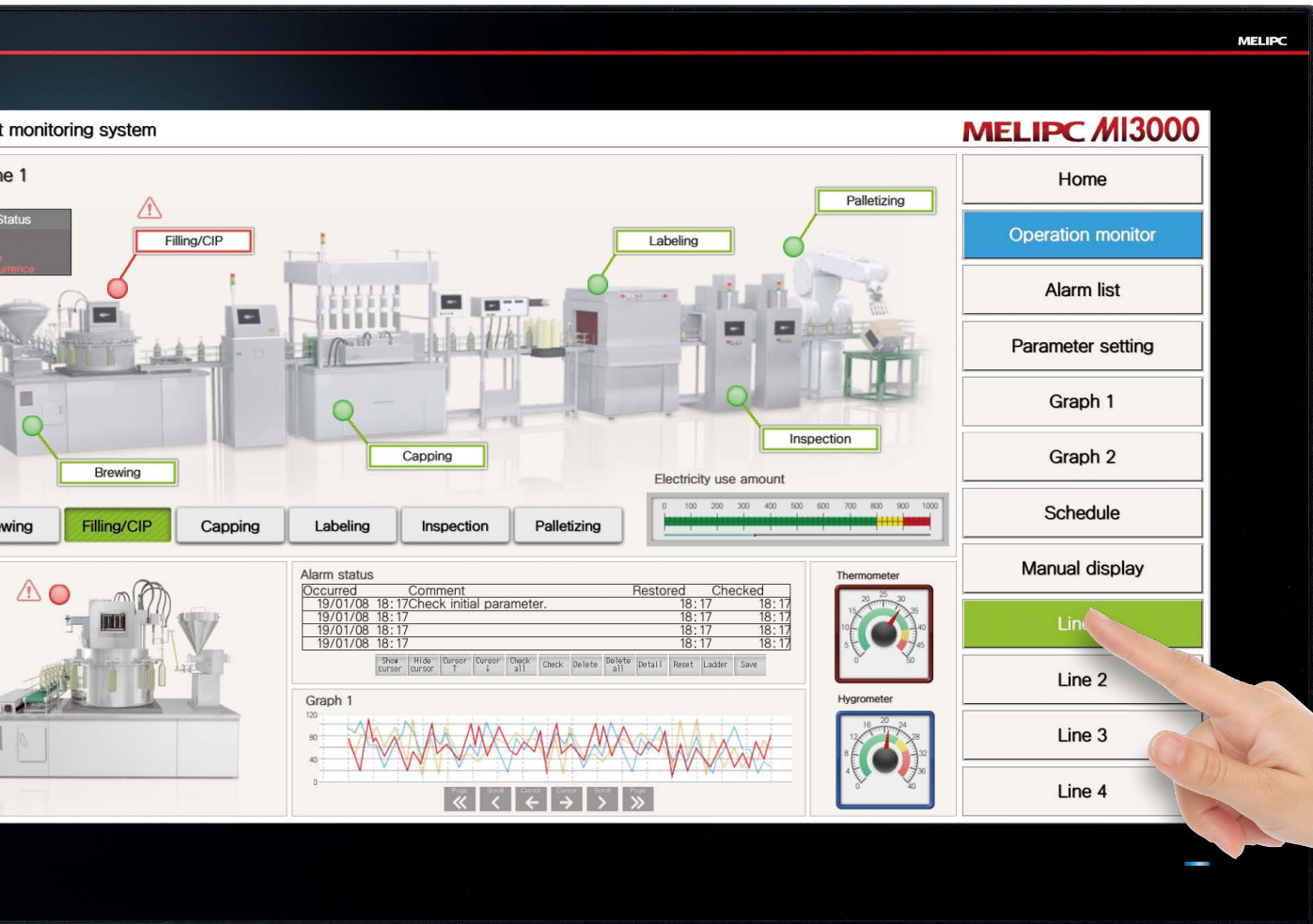
Pre-installed software

- Edgecross Basic Software
- SLMP Data Collector
- GT SoftGOT2000



15" XGA

	MI3315G-W	MI3321G-W
OS	Windows® 10 IoT Enterprise 2016 LTSP (64 bit)	
MPU	Intel® Core™ i3-6100U 2.30 GHz (Dual Core)	
Screen size	15"	21.5" widescreen
Resolution	XGA: 1024 x 768 dots	Full HD: 1920 x 1080 dots
Display color	16.77 million	
Touch panel type	PCAP (Projected Capacitive)	
Main memory	8 GB	
Internal storage	64 GB	



21.5" widescreen, Full HD

MI3000 connects shop floors and IT systems in real time as the front-end and the base of your factory

Factories that do not create defects, that do not stop. To make existing factories smarter, demands for applying IoT to shop floors are rapidly increasing. MI3000 utilizes the latest IoT technologies to visualize production activities and collect and analyze big data of manufacturing, thus increasing productivity and ensuring and improving products quality.



MI3000 features

High resolution, large screen display, and equipped with all necessary functions to visualize factories in one body

21.5" widescreen, Full HD



Display colorful images with 16.77 million colors

Beautiful, stunning, large screen monitor offers easy-to-view display and user-friendly operation

MI3000 is equipped with large 21.5-inch widescreen display and a full HD high resolution LCD panel*1. Collected data can be displayed on the easy-to-view screen and can be operated by touch operations.

*1. Equipped on MI3321G-W.

PCAP (Projected Capacitive) touch panel

Light-touch operation is realized with a PCAP touch panel that is widely used for smartphones and tablet devices. The touch panel with high transmittance offers clear and high visibility display.

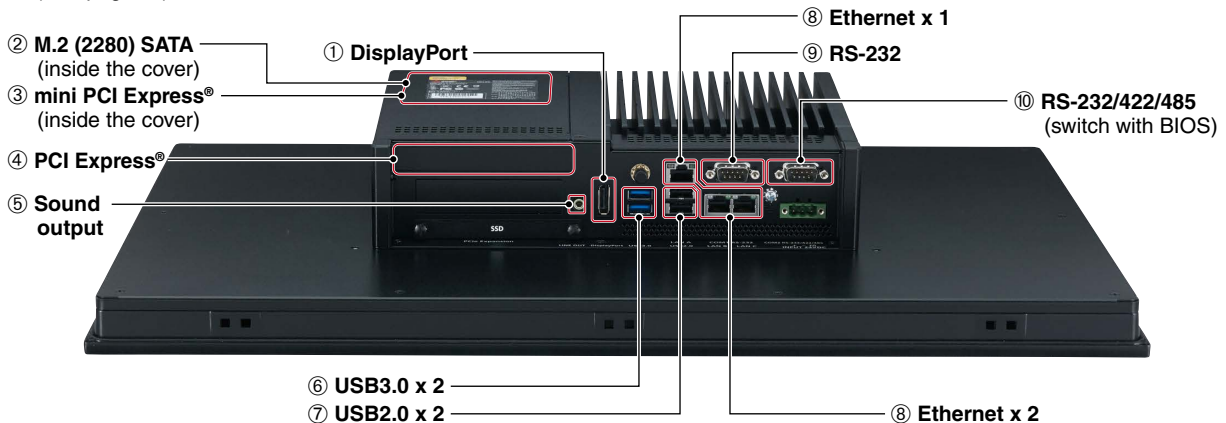
Data analysis/diagnosis/monitoring

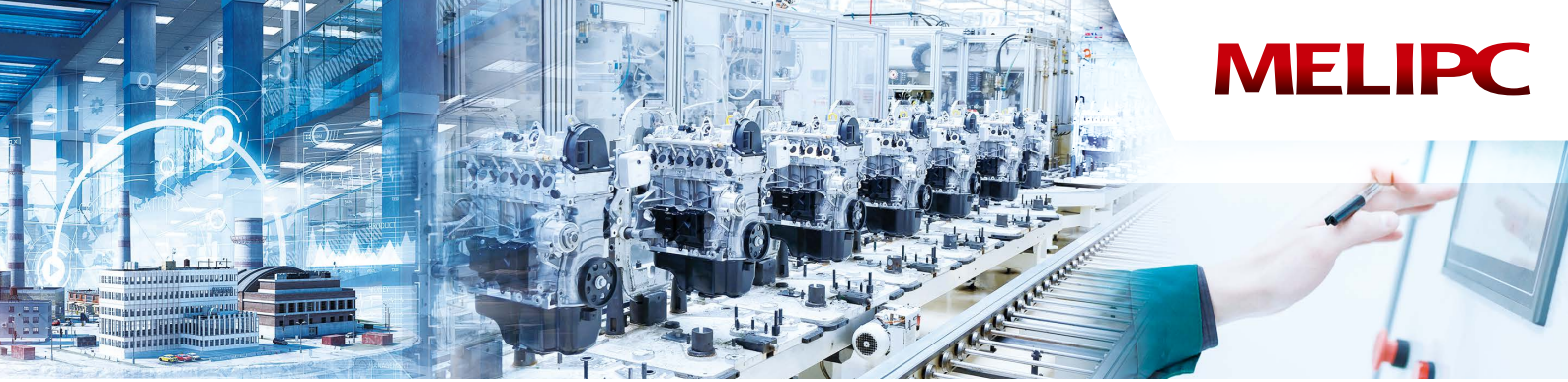
Equipped with Intel® Core™ i3 CPU, 8 GB memory, and 64 GB SSD. Simple analysis/diagnosis/monitoring of collected data contributes to improve shop floors.

System expansion according to needs

Equipped with various interfaces, systems can be configured according to the customers' needs.

- ① **DisplayPort**
Output to an external monitor. Screen can be displayed on a larger monitor.
- ② **M.2 (2280) SATA (inside the cover)**
Expand storage for collecting and storing large amounts of data.
- ③④ **PCI Express®/mini PCI Express® (inside the cover)**
Expand functions by using an expansion board.
- ⑤ **Sound output**
For outputting sound by connecting a speaker with built-in amplifier. To output sound from GT SoftGOT2000, sound files can be created easily with GT Designer3. (See page 10)
- ⑥⑦ **USB3.0/USB2.0**
Each interface has two ports for connecting to various USB compatible devices.
- ⑧ **Ethernet**
Various Ethernet compatible devices can be connected to 3 ports. The network in the office can be separated from the one in shop floors to enhance security.
- ⑨⑩ **RS-232/422/485**
For data collection from existing facilities.

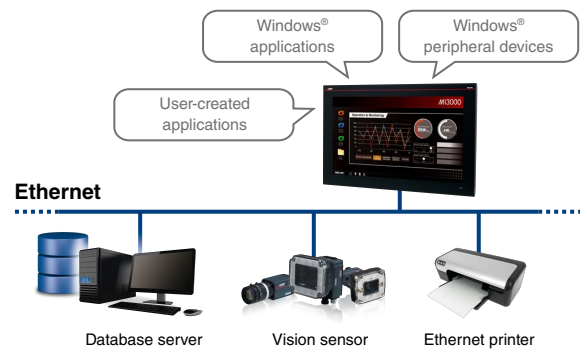




Windows® OS and coordination with Edgexcross enable wider usage

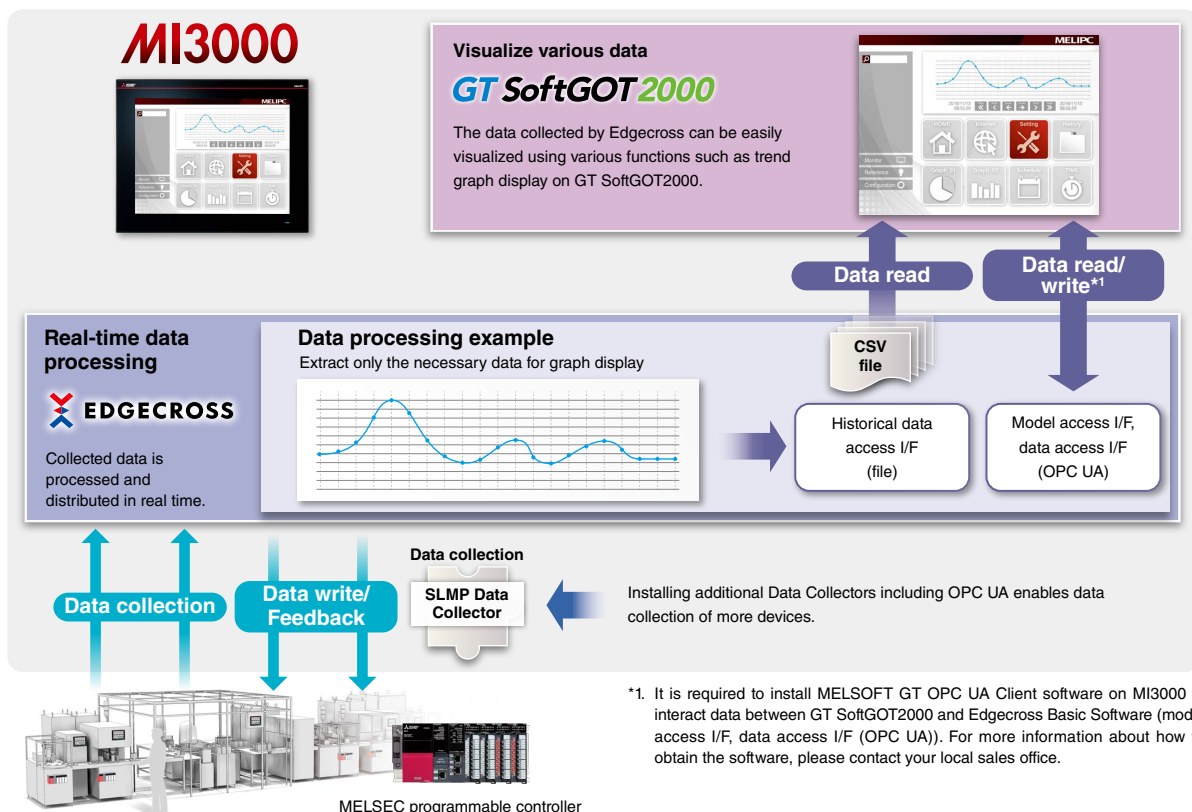
Windows® 10 IoT Enterprise pre-installed

Not only familiar Windows® applications, but also user-created applications can be used to configure systems that meet requirements of individual customers. In addition, long-term support of Windows® 10 IoT Enterprise ensures safe use of facilities and devices with long life cycles.



Edgexcross compatible software pre-installed

Edgexcross Basic Software, SLMP Data Collector, and GT SoftGOT2000 are pre-installed on MI3000. The data collected by Edgexcross, SLMP Data Collector, and GT SoftGOT2000 can be monitored on the GT SoftGOT2000 screen.



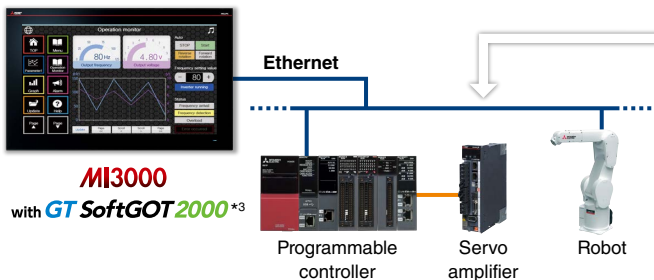
Easily visualize shop floors with GT SoftGOT2000

MI3000 with GT SoftGOT2000



GT SoftGOT2000 pre-installed

GT SoftGOT2000 is pre-installed*1 on MI3000. Various industrial devices can be directly connected*2 and monitored in the same way as GOT2000 Series. The data collected by Edgexcross can also be monitored.



Drive Control (Servo) Interactive Solutions



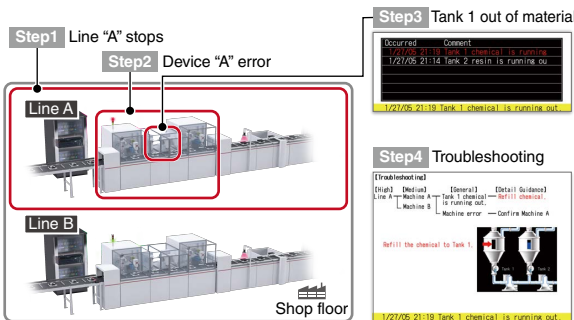
Monitor devices of MELSERVO-J5 Series servo amplifiers (MR-J5-□G, MR-J5-□G-RJ, MR-J5W2-□G, MR-J5W3-□G) that are controlled by Motion modules. Visualizing servo systems speeds up system startup and adjustment, and improves preventive maintenance and troubleshooting efficiency. In addition, devices of MELSERVO-J4 Series servo amplifiers (MR-J4-B) and those of Motion controllers and Simple Motion modules that control the servo amplifiers can also be monitored.

- *1. GT SoftGOT2000 license key (for USB port) (sold separately) is not required.
- *2. For the connectable model list and supported connection types, please refer to the Graphic Operation Terminal GOT2000 Series Catalog (L(NA)08270(ENG)), or refer to the GT SoftGOT2000 Version1 Operating Manual by starting up e-Manual Viewer that is pre-installed on MI3000.
- *3. To monitor devices of MELSERVO-J5 Series servo amplifiers, it is required to use GT SoftGOT2000 and GT Designer3 Version1.240A or later.

Use various functions of GT SoftGOT2000 on a panel computer

Alarm display

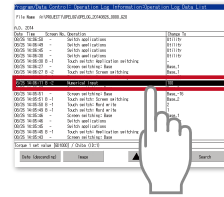
GT SoftGOT2000 displays communication errors (system alarms) of controllers and user-created alarms (user alarms).



Operation log

GT SoftGOT2000 records the operation information, such as "what, when, and how" of an operation performed, in chronological order in a USB memory.

Operation log list



Check the brief information of the log

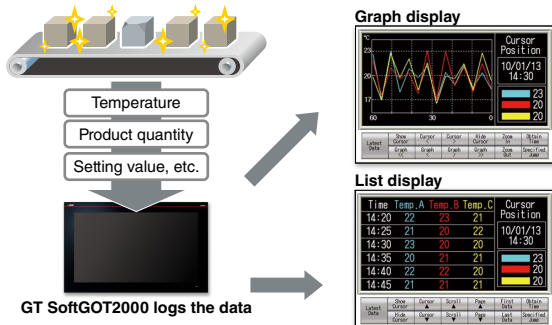
Detailed information



Check the detailed information of the log

Logging & Graph/List

GT SoftGOT2000 collects the data from programmable controllers and other devices and displays the collected data in a historical trend graph and list.



Recipe

GT SoftGOT2000 saves the recipe information (device values) such as material blend and machine conditions. You can change the recipe on the GT SoftGOT2000 and write it to a programmable controller to quickly perform the changeover.

The screenshot shows a recipe selection screen with a 'Vegetable curry' recipe highlighted. Below it is a table showing the material blend for three different records.

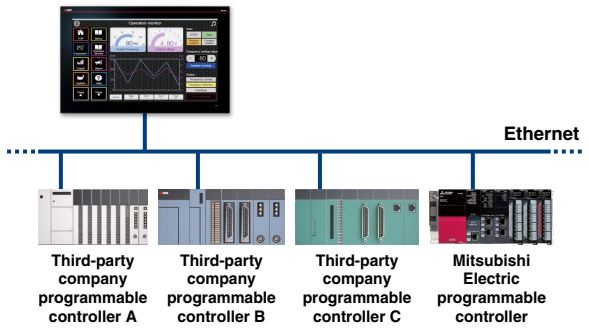
		D2000	D2001	D2002
Record 1	Vegetable curry	300	0	0
Record 2	Chicken curry	0	300	0
Record 3	Seafood curry	0	0	150



Multi-channel *1

Up to four channels of industrial devices can be monitored via Ethernet on a single module of GT SoftGOT2000. With this function, you can flexibly configure systems and visually check devices.

MI3000 with GT SoftGOT2000



*1. It is required to use GT SoftGOT2000 and GT Designer3 Version1.240A or later.

Operability

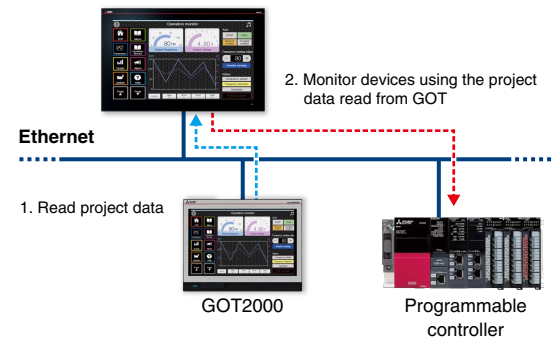
Not only touch operations, but also long-press operations*1 can be used. Enabling momentary action and ON-delay of touch switches ensures safe operation and improves operability.



Interaction with GOT2000

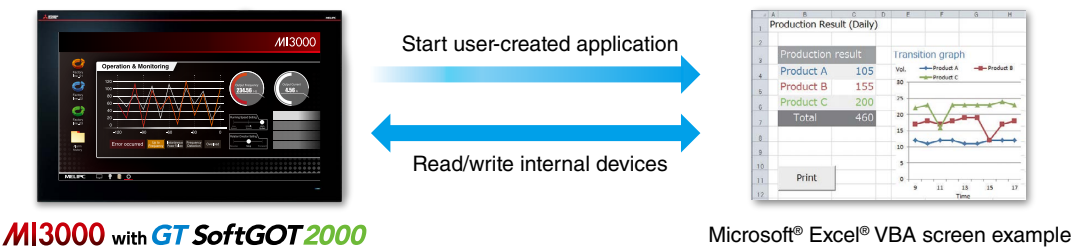
GT SoftGOT2000 allows monitoring of devices connected via Ethernet using the project data that is read from GOT at a shop floor. GT SoftGOT2000 and the GOT can display different screens. Since the project data dedicated for GT SoftGOT2000 is not required, you can quickly start remote monitoring. (SoftGOT-GOT link function)

MI3000 with GT SoftGOT2000



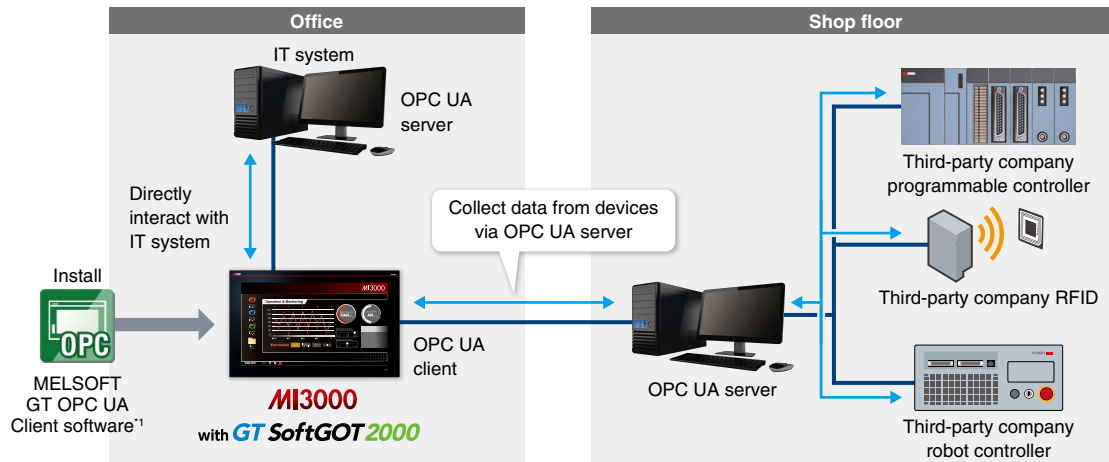
Interaction with Windows® applications

By creating a touch switch on the GT SoftGOT2000 screen, it is possible to start other applications (such as Microsoft® Excel®) while monitoring with GT SoftGOT2000. Interaction with Windows® applications makes it possible to build advanced and flexible systems.



OPC UA client support for data collection and monitoring of various devices*2

GT SoftGOT2000 accesses an OPC UA server as an OPC UA client. GT SoftGOT2000 can collect data you need via the OPC UA server even if direct connection to IT systems or the devices at the shop floor is not supported.



OPC UA (OLE for Process Control Unified Architecture):

a highly reliable, open international standard for industrial communication that enables data exchange among devices from multiple vendors on different operating systems.

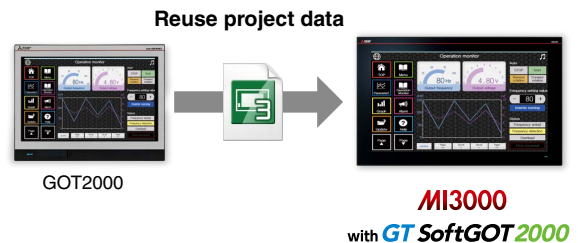
*1. It is required to install MELSOFT GT OPC UA Client software on a personal computer. For more information about how to obtain the software, please contact your local sales office.

*2. It is required to use GT SoftGOT2000 and GT Designer3 Version 1.240A or later.

Easily create project data

Creating screens is easy

The display screen is created with GT Designer3. By converting the GOT type to MI3000, the project data for GOT2000 can be used as is. Ready to use sample screens are also available.



Sound files can be created easily

Sound files for notification can be created easily with GT Designer3. Just enter text in GT Designer3 to create a sound file of a message. In addition to messages, sound effects and melodies are included. Three types of sound files can be combined to make effective audio guidance. (Speech synthesis function*1)

*1. GT Works Text to Speech License (SW1DND-GTVO-M) is required separately.

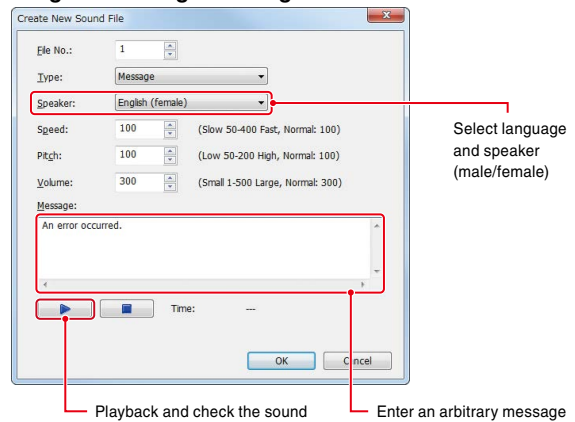
Supported languages of messages

Gender	Japanese	English	Chinese (Simplified)	Chinese (Traditional)	Korean	Spanish
Male	Available	Available	Available	Not Available	Available	Available
Female	Available	Available	Available	Available	Available	Available

Playable sound file types

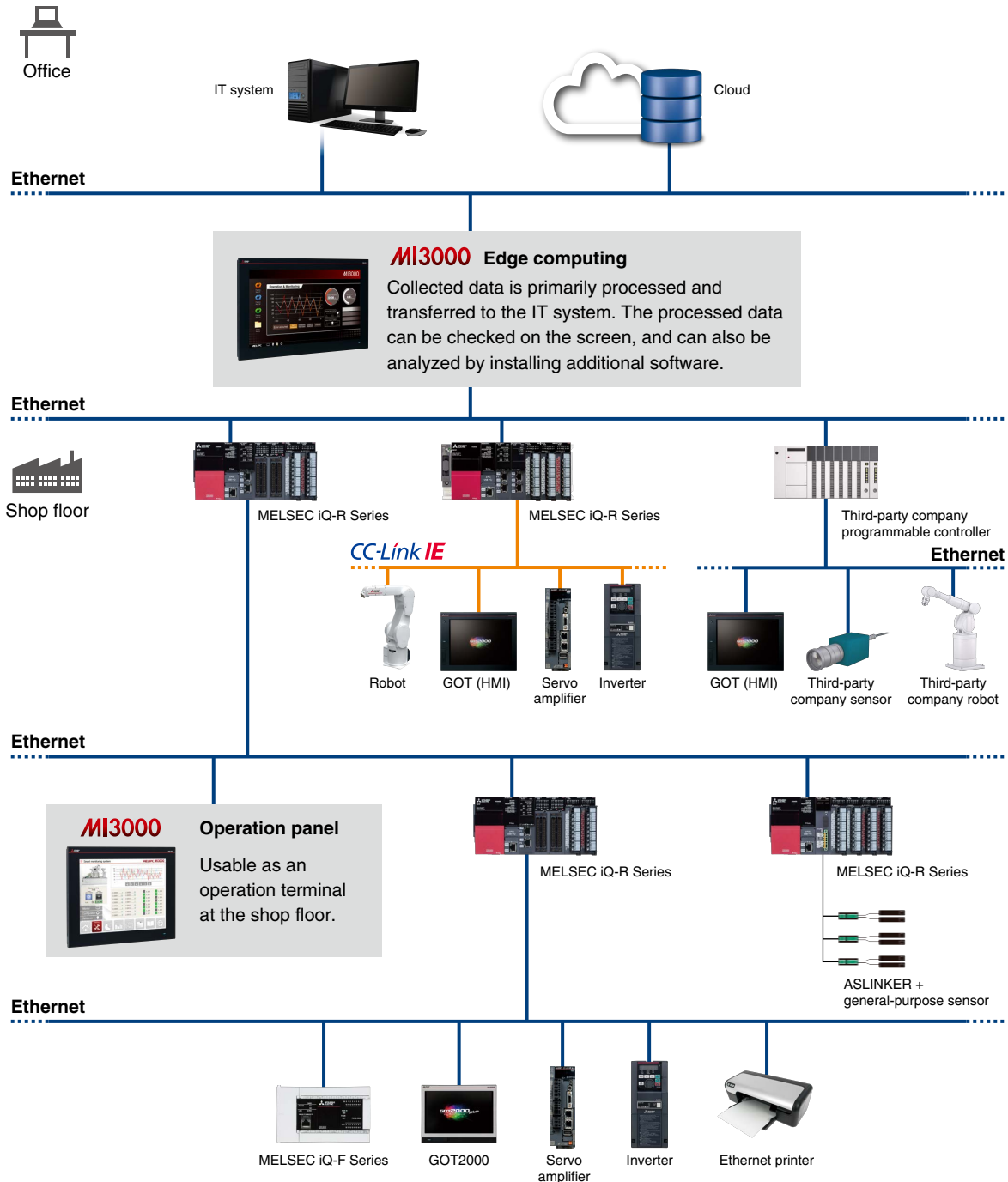
Message	Sound effect	Melody
Create from arbitrary text	More than 50 files are included	More than 10 files are included

Image of creating a message



System configuration

Utilization of pre-installed Edgexross Basic Software and SLMP Data Collector enables real-time monitoring of shop floor data and realizes coordination with IT systems. In addition, collected data is easily visualized with GT SoftGOT2000.



MELIPC MI3000 specifications

General specifications

Item	Specifications	
	MI3321G-W	MI3315G-W
Operating ambient temperature (°C)	0...55	
Storage ambient temperature (°C)	-20...60	
Operating ambient humidity	10...90% RH, non-condensing	
Storage ambient humidity	10...90% RH, non-condensing	
Vibration resistance	Compliant with IEC60068-2-64, 5...500Hz, one hour in direction X, Y, Z each	
	Random vibration	
Shock resistance	3 Grms	
	Compliant with IEC-60068-2-27, 10 G, half sine wave, 11 msec	
Operating atmosphere	No greasy fumes, no corrosive gases, no flammable gases, no excessive conductive dust, no direct sunlight (as well as at storage)	
Operating altitude*3*4	—	
Installation location	Inside the control panel	
Overvoltage category*1	≤ II	
Pollution degree*2	≤ 2	
Cooling method	Self-cooling (fan-less)	
Grounding	Grounding with a ground resistance of 100 Ω or less by using a ground cable that has a cross-sectional area of 2 mm ² or more.	

*1. This indicates the section of the power supply to which the equipment is assumed to be connected between the public electrical power distribution network and the machinery within premises. Category II applies to equipment for which electrical power is supplied from fixed facilities. The surge voltage withstand level for up to the rated voltage of 300 V is 2500 V.

*2. This index indicates the degree to which conductive material is generated in terms of the environment in which the equipment is used. Pollution level 2 is when only non-conductive pollution occurs. A temporary conductivity caused by condensing must be expected occasionally.

*3. Do not use nor store the product under pressure higher than the atmospheric pressure of altitude 0 m. Doing so may cause malfunction.

*4. No limitations to altitude. When used at a high altitude, the upper limits of the permissible voltage and the operating ambient temperature become lower. Please check performance before use at the customer side.

Performance specifications

Item	Specifications	
	MI3321G-W	MI3315G-W
Hardware		
MPU	Intel® Core™ i3-6100U 2.30GHz (Dual Core)	
Main memory (byte)	8G	
Internal storage capacity (byte)	64G	
Battery replacement	Not replaceable*2	
Battery life	4 years	
Extended storage interface	M.2 (2280) SATA SSD x 1	
Software		
OS	Windows® 10 IoT Enterprise 2016 LTSC (64 bit)	
System language	At initial startup: English	
Display interface (for external monitor output)		
Interface	DisplayPort 1.4 x 1	
Resolution*1	Max. 3840 x 2160	
Extended slot		
PCI Express®	x1 slot, (half size) x 1	
mini PCI Express®	Full size x 2	
PCI	—	
Ethernet (RJ45)		
Interface	10BASE-T/100BASE-TX/1000BASE-T (AUTO MDI/MDI-X)	
Number of channels	3	
RS-232 (D-sub 9-pin (male))		
Number of channels	2 (RS-422/485 can also be used for one of the two channels*3)	
Transmission rate (bps)	300...115200	
RS-422 (D-sub 9-pin (male))		
Number of channels	1 (RS-232/485 can also be used*3)	
Transmission rate (bps)	300...115200	
RS-485 (D-sub 9-pin (male))		
Number of channels	1 (RS-232/422 can also be used*3)	
Transmission rate (bps)	300...115200	
USB (USB Type-A)		
USB3.0	2	
USB2.0	2	
Sound output (φ3.5 mini-jack (3-prong))		
Interface	Audio Line-Out	
Number of ports	1	
Others		
Built-in clock precision	Daily difference: -2 seconds to +2 seconds Monthly difference: -60 seconds to +60 seconds	
Safety standards, radio laws	CE, UL, cUL, KC, BSMI, CCC, FCC	
External dimensions (H x W x D)	349.8 x 558.4 x 88.8 mm (13.77 x 21.98 x 3.50 inch)	307.3 x 383.2 x 86 mm (12.10 x 15.09 x 3.39 inch)
Panel cutting dimensions (H x W)	341.8 x 550.3 mm (13.46 x 21.67 inch)	298.5 x 374.5 mm (11.75 x 14.74 inch)
Weight	9.8 kg (21.6 lb)	7.0 kg (15.4 lb)

*1. Maximum resolution at 60 Hz.

*2. The battery cannot be removed by users. For the battery replacement, please consult your local sales office.

*3. The interface can be switched between RS-232, RS-422, and RS-485 with the BIOS.

Display specifications

Item	Specifications	
	MI3321G-W	MI3315G-W
Display specifications		
Display device ^{*1*2}	TFT color LCD	
Screen size	21.5" widescreen	15"
Resolution (dots)	Full HD: 1920 x 1080	XGA: 1024 x 768
Display colors	16.77 million	
Backlight specification	LED backlight (not replaceable)	
Life	50,000 hours	
Touch panel		
Type	PCAP (Projected Capacitive)	
Simultaneous press	Max. 10 keys ^{*3}	
Transmittance	90%±3%	
Others		
POWER LED	2 colors (blue and orange)	
Environmental protective structure	IP66 (front face)	

*1. As a characteristic of liquid crystal display panels, bright dots (always lit) and dark dots (never lit) may appear on the panel. Since liquid crystal display panels comprise a great number of display elements, the appearance of bright and dark dots cannot be reduced to zero. Individual differences in liquid crystal display panels may cause differences in color, uneven brightness and flickering. Note that these phenomena are characteristics of liquid crystal display panels and it does not mean the products are defective or damaged

*2. Flickering may occur due to vibration, shock, or the display colors.

*3. Multiple touch keys cannot be pressed simultaneously while GT SoftGOT2000 is used.

Power supply specifications

Item	Specifications	
	MI3321G-W	MI3315G-W
Power supply voltage	24 V DC (+20%, -20%)	
Power consumption	Under the maximum load	90 W
	Stand alone	27 W
Applicable wire size	Single wiring (single wire, stranded wire): 0.2 to 2.5 mm ² (AWG24 to AWG14) Rod terminal with an insulation sleeve: 0.25 to 2.5 mm ² (AWG22 to AWG14) Double wiring (single wire, stranded wire): 0.2 to 1.5 mm ² (AWG24 to AWG16)	
Applicable solderless terminal	DN00508D (AWG20), DN00708D (AWG18), DN01508D (AWG16) (manufactured by DINKLE) Crimp tool: DNT13-0101 (manufactured by DINKLE)	
Applicable tightening torque (for terminal block terminal screws)	0.20 N·m (M2.5)	

GT SoftGOT2000 (pre-installed software) specifications

Item	Specifications
Resolution	640 to 1920 x 480 to 1200
Display color	65536 colors
Display language	At initial startup: English ^{*2}
Connection type ^{*1}	Ethernet connection, direct CPU connection, serial communication connection, CC-Link IE Controller Network connection, CC-Link IE Field Network connection, MELSECNET connection

*1. Required devices vary depending on the connection type. For the details, please refer to the GT SoftGOT2000 Version1 Operating Manual.

*2. By switching display languages, Japanese and Chinese (Simplified) can be displayed. To upgrade the software version, use the English version of the upgrade software.

iQ Edgecross compatible software

■ Edge application

Item	MI3000
Real-time Data Analyzer	● ^{*1}
GT SoftGOT2000	● (pre-installed)
GENESIS64™	●

*1. Since MI3315G-W does not support the resolution that is recommended by Real-time Data Analyzer, some parts of the screen are not shown on the display. However, the hidden parts can be displayed by moving the display position.

■ Data collector

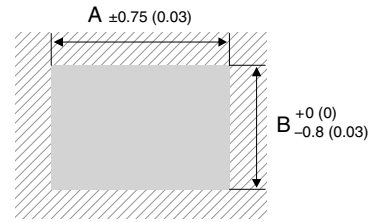
Item	MI3000
CC-Link IE Field Network Data Collector (MELIPC MI5122-VW)	—
CC-Link IE Field Network Data Collector ^{*1}	●
CC-Link IE Controller Network Data Collector ^{*1}	●
CC-Link IE TSN Data Collector NEW	●
SLMP Data Collector	● (pre-installed)
OPC UA Data Collector	●
MTConnect Data Collector	●

*1. The network interface board by Mitsubishi Electric is required separately.

Panel cutting dimensions

Screen size	Model	A	B
21.5" widescreen	MI3312G-W	550.3 (21.67)	341.8 (13.46)
15"	MI3315G-W	374.5 (14.74)	298.5 (11.75)

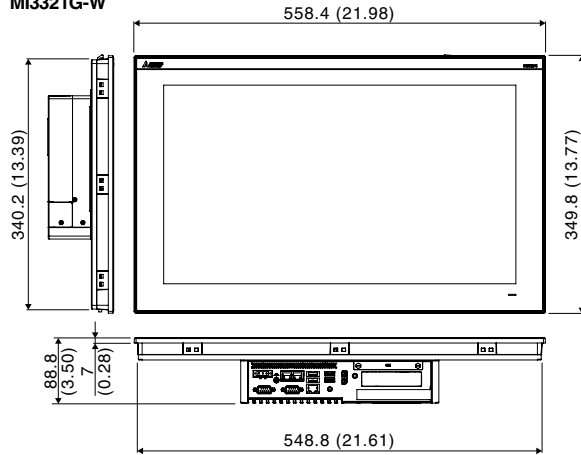
Unit: mm (inch)



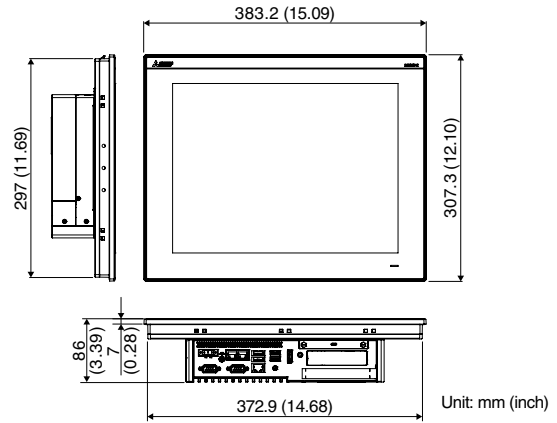
* Panel thickness: 2 to 6 mm (0.08 to 0.24 inch)

External dimensions

MI3321G-W



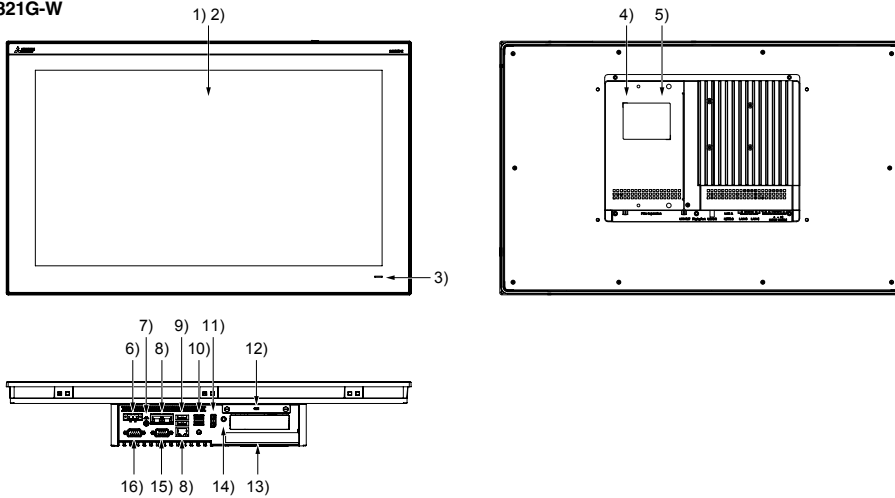
MI3315G-W



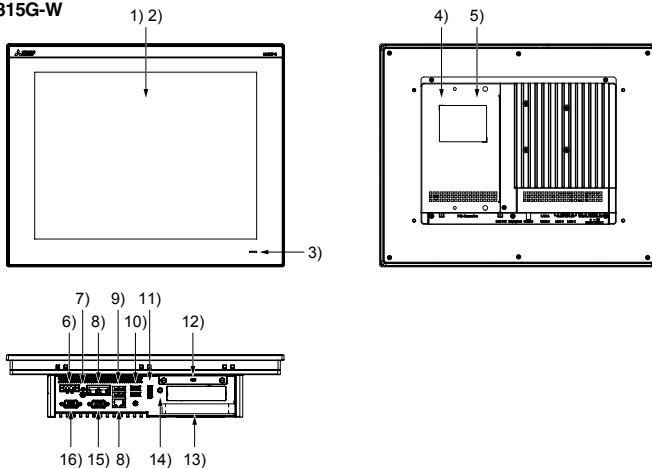
Unit: mm (inch)

Part names

MI3321G-W



MI3315G-W



- 1) Display section
- 2) Touch panel
- 3) POWER LED
- 4) M.2 (2280) SATA interface (inside the cover)
- 5) mini PCI Express® interface (inside the cover)
- 6) Power supply terminal
- 7) Ground terminal
- 8) Ethernet interface
- 9) USB2.0 interface
- 10) USB3.0 interface
- 11) DisplayPort interface
- 12) SATA interface
- 13) PCI Express® interface
- 14) Sound output interface
- 15) RS-232 interface
- 16) RS-232/RS-422/RS-485 interface

Product list

MELIPC

Product name	Model	Screen size	Panel color	Outline
MELIPC MI3000	MI3321G-W	21.5" widescreen, Full HD	Black	Edgecross Basic Software, SLMP Data Collector, GT SoftGOT2000 pre-installed
	MI3315G-W	15" XGA	Black	

Engineering tool

Product name	Model	Outline
HMI/GOT Screen Design Software MELSOFT GT Works3	SW1DND-GTWK3-E	English Version Standard license product*1
GT Works Text to Speech License*2	SW1DND-GTVO-M	Standard license product

*1. The desired number of licenses (2 or more) can be purchased. For details, please contact your local sales office.

*2. To edit sound files, each personal computer requires one license.

Option

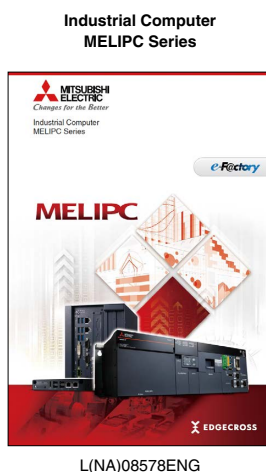
Product name	Model	Outline
Network interface board	Q81BD-J71GF11-T2	PCI Express® bus compatible, CC-Link IE Field Network (master/local station)
	Q81BD-J71GP21-SX	PCI Express® bus compatible, CC-Link IE Controller Network (control/normal station)
	Q81BD-J71GP21S-SX	PCI Express® bus compatible, CC-Link IE Controller Network (control/normal station), with external power supply function

iQ Edgecross

Product name	Model	Outline
Real-time Data Analyzer*1	SW1DND-RDA-MQ12	One year subscription license, DVD included
	SW1DND-RDA-MZQ12	One year subscription license

*1. For the details, please refer to the Industrial Computer MELIPC Series catalog (L(NA)08578ENG). This product can be used when one year subscription license is purchased. Please consult your local Mitsubishi Electric representative, if other license agreement is required.

Related materials



Extensive global support coverage providing expert help whenever needed

■ Global FA centers

■ EMEA

Europe FA Center
MITSUBISHI ELECTRIC EUROPE B.V. Polish Branch
Tel: +48-12-347-65-00

Germany FA Center
MITSUBISHI ELECTRIC EUROPE B.V. German Branch
Tel: +49-2102-486-0 / Fax: +49-2102-486-1120

UK FA Center
MITSUBISHI ELECTRIC EUROPE B.V. UK Branch
Tel: +44-1707-27-8780 / Fax: +44-1707-27-8695

Czech Republic FA Center
MITSUBISHI ELECTRIC EUROPE B.V. Czech Branch
Tel: +420-255-719-200

Italy FA Center
MITSUBISHI ELECTRIC EUROPE B.V. Italian Branch
Tel: +39-039-60531 / Fax: +39-039-6053-312

Russia FA Center
MITSUBISHI ELECTRIC (RUSSIA) LLC ST.
Petersburg Branch
Tel: +7-812-633-3497 / Fax: +7-812-633-3499

Turkey FA Center
MITSUBISHI ELECTRIC TURKEY A.S Umraniye Branch
Tel: +90-216-969-2500 / Fax: +90-216-526-3995

■ Asia-Pacific

China
Beijing FA Center
MITSUBISHI ELECTRIC AUTOMATION (CHINA) LTD.
Beijing FA Center
Tel: +86-10-6518-8830 / Fax: +86-10-6518-2938

Guangzhou FA Center
MITSUBISHI ELECTRIC AUTOMATION (CHINA) LTD.
Guangzhou FA Center
Tel: +86-20-8923-6730 / Fax: +86-20-8923-6715

Shanghai FA Center
MITSUBISHI ELECTRIC AUTOMATION (CHINA) LTD.
Shanghai FA Center
Tel: +86-21-2322-3030 / Fax: +86-21-2322-3000

Tianjin FA Center
MITSUBISHI ELECTRIC AUTOMATION (CHINA) LTD.
Tianjin FA Center
Tel: +86-22-2813-1015 / Fax: +86-22-2813-1017

Taiwan

Taipei FA Center
SETSUYO ENTERPRISE CO., LTD.
Tel: +886-2-2299-9917 / Fax: +886-2-2299-9963

Korea

Korea FA Center
MITSUBISHI ELECTRIC AUTOMATION KOREA CO., LTD.
Tel: +82-2-3660-9632 / Fax: +82-2-3664-0475

Thailand

Thailand FA Center
MITSUBISHI ELECTRIC FACTORY AUTOMATION
(THAILAND) CO., LTD.
Tel: +66-2092-8600 / Fax: +66-2043-1231-33

ASEAN

ASEAN FA Center
MITSUBISHI ELECTRIC ASIA PTE. LTD.
Tel: +65-6470-2475 / Fax: +65-6476-7439

Indonesia

Indonesia FA Center
PT. MITSUBISHI ELECTRIC INDONESIA
Cikarang Office
Tel: +62-21-2961-7797 / Fax: +62-21-2961-7794

Vietnam

Hanoi FA Center
MITSUBISHI ELECTRIC VIETNAM COMPANY LIMITED
Hanoi Branch Office
Tel: +84-24-3937-8075 / Fax: +84-24-3937-8076

Ho Chi Minh FA Center
MITSUBISHI ELECTRIC VIETNAM COMPANY LIMITED
Tel: +84-28-3910-5945 / Fax: +84-28-3910-5947

Philippines

Philippines FA Center
MELCO Factory Automation Philippines Inc.
Tel: +63-(0)2-8256-8042

India

India Ahmedabad FA Center
MITSUBISHI ELECTRIC INDIA PVT. LTD.
Ahmedabad Branch
Tel: +91-79-6512-0063

India Bangalore FA Center
MITSUBISHI ELECTRIC INDIA PVT. LTD.
Bangalore Branch
Tel: +91-80-4020-1600 / Fax: +91-80-4020-1699

India Chennai FA Center
MITSUBISHI ELECTRIC INDIA PVT. LTD.
Chennai Branch
Tel: +91-44-4554-8772 / Fax: +91-44-4554-8773

India Coimbatore FA Center
MITSUBISHI ELECTRIC INDIA PVT. LTD.
Coimbatore Branch
Tel: +91-422-438-5606

India Gurgaon FA Center
MITSUBISHI ELECTRIC INDIA PVT. LTD.
Gurgaon Head Office
Tel: +91-124-463-0300 / Fax: +91-124-463-0399

India Pune FA Center
MITSUBISHI ELECTRIC INDIA PVT. LTD.
Pune Branch
Tel: +91-20-2710-2000 / Fax: +91-20-2710-2100

■ Americas

USA

North America FA Center
MITSUBISHI ELECTRIC AUTOMATION, INC.
Tel: +1-847-478-2100 / Fax: +1-847-478-2253

Mexico

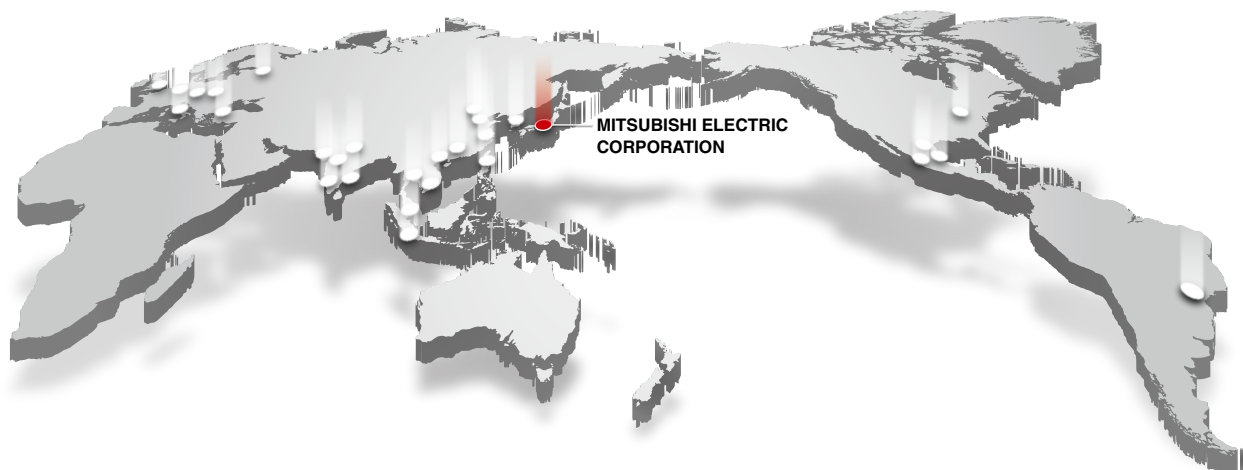
Mexico City FA Center
MITSUBISHI ELECTRIC AUTOMATION, INC.
Mexico Branch
Tel: +52-55-3067-7511

Mexico FA Center
MITSUBISHI ELECTRIC AUTOMATION, INC.
Queretaro Office
Tel: +52-442-153-6014

Mexico Monterrey FA Center
MITSUBISHI ELECTRIC AUTOMATION, INC.
Monterrey Office
Tel: +52-55-3067-7521

Brazil

Brazil FA Center
MITSUBISHI ELECTRIC DO BRASIL COMERCIO E
SERVICOS LTDA.
Tel: +55-11-4689-3000 / Fax: +55-11-4689-3016



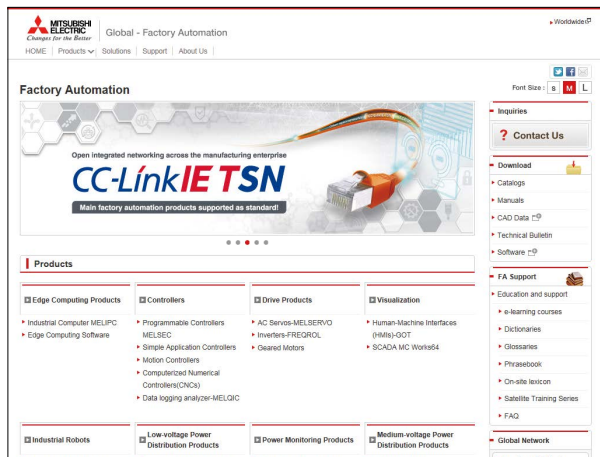
Factory Automation Global website

Mitsubishi Electric Factory Automation provides a mix of services to support its customers worldwide. A consolidated global website is the main portal, offering a selection of support tools and a window to its local Mitsubishi Electric sales and support network.

From here you can find:

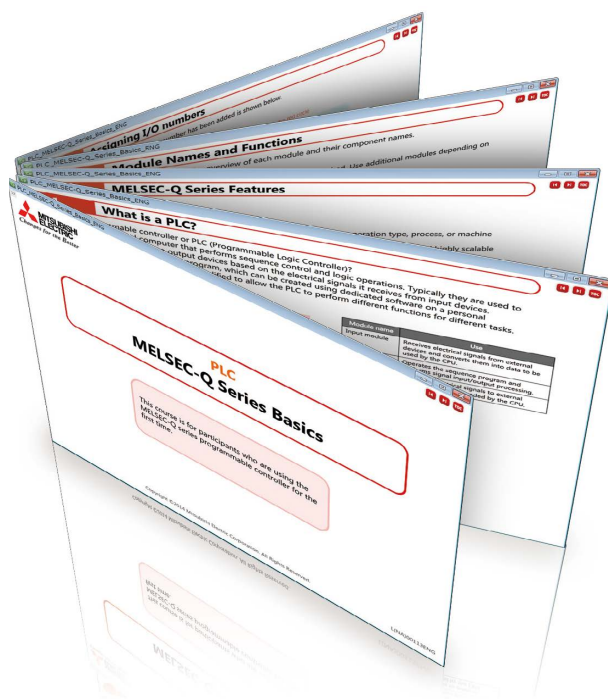
- Overview of available factory automation products
- Library of downloadable literature
- Support tools such as online e-learning courses, terminology dictionary, etc.
- Global sales and service network portal
- Latest news related to Mitsubishi Electric factory automation

**Mitsubishi Electric Factory Automation
Global website:
www.MitsubishiElectric.com/fa**



Online e-learning

An extensive library of e-learning courses covering the factory automation product range has been prepared. Courses from beginner to advanced levels of difficulty are available in various languages.



Beginner level

Designed for newcomers to Mitsubishi Electric Factory Automation products gaining a background of the fundamentals and an overview of various products related to the course.

Basic to Advanced levels

These courses are designed to provide education at all levels. Various different features are explained with application examples providing an easy and informative resource for in-house company training.

Innovative next-generation, e-Manual

e-Manual Viewer

The e-Manual viewer is a next-generation digital manual offered by Mitsubishi Electric that consolidates factory automation products manuals into an easy-to-use package with various useful features integrated into the viewer. The e-Manual allows multiple manuals to be cross-searched at once, further reducing time for setting up products and troubleshooting.



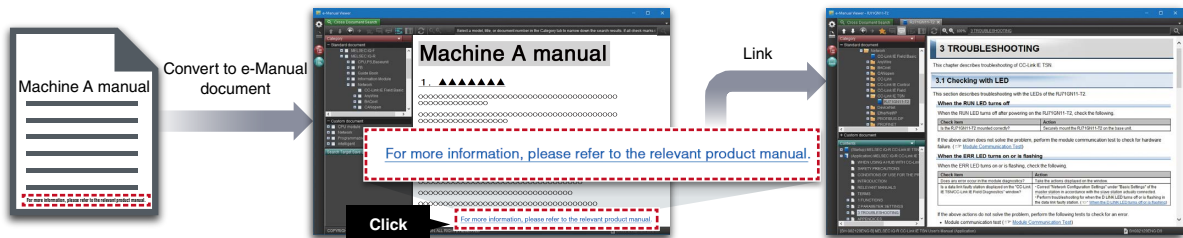
Key features included

- One-stop database containing all required manuals, with local file cache
- Included with GX Works3 engineering software
- Also available in tablet version
- Easily download manuals all at once
- Multiple users can share the latest manuals and knowhow with document sharing function
- Directly port sample programs within manuals to GX Works3
- Downloaded manuals are usable offline



e-Manual Create

e-Manual Create is software for converting word files and chm files to e-Manual documents. e-Manual Create allows users to directly refer to Mitsubishi Electric e-Manuals from user's customized device maintenance manuals and such, supporting quick troubleshooting and reduction in document creation process.



* To obtain the Windows® version of e-Manual Viewer and e-Manual Create, please contact your local Mitsubishi Electric sales office or representative.

Android and Google Play are trademarks of Google LLC.
Apple and App Store are trademarks of Apple Inc., registered in the U.S. and other countries.
DisplayPort is a trademark or registered trademark of Video Electronics Standards Association in the United States and other countries.
Ethernet is a trademark of Xerox Corporation.
Intel, Intel Core, and Intel Atom are trademarks of Intel Corporation in the United States and other countries.
IOS is a trademark or registered trademark of Cisco in the U.S. and other countries and is used under license.
Microsoft, Windows, Azure, and Excel are registered trademarks of Microsoft Corporation in the United States and other countries.
MTConnect is a registered trademark of AMT - The Association For Manufacturing Technology.
PCI Express is a registered trademark of PCI-SIG.
QR Code is a trademark or a registered trademark of DENSO WAVE INCORPORATED in JAPAN, the United States and/or other countries.
VxWorks is a registered trademark of Wind River Systems, Inc. in the United States and other countries.
All other company names and product names used in this document are trademarks or registered trademarks of their respective companies.

The actual color may differ slightly from the pictures in this catalog.
The actual display may differ from what are shown on MI3000 screen images.

Precautions before use

This publication explains the typical features and functions of the products herein and does not provide restrictions or other information related to usage and module combinations. Before using the products, always read the product user manuals. Mitsubishi Electric will not be held liable for damage caused by factors found not to be the cause of Mitsubishi Electric; opportunity loss or lost profits caused by faults in Mitsubishi Electric products; damage, secondary damage, or accident compensation, whether foreseeable or not, caused by special factors; damage to products other than Mitsubishi Electric products; or any other duties.

For safe use

- To use the products given in this publication properly, always read the relevant manuals before beginning operation.
- The products have been manufactured as general-purpose parts for general industries, and are not designed or manufactured to be incorporated in a device or system used in purposes related to human life.
- Before using the products for special purposes such as nuclear power, electric power, aerospace, medicine or passenger-carrying vehicles, consult with Mitsubishi Electric.
- The products have been manufactured under strict quality control. However, when installing the products where major accidents or losses could occur if the products fail, install appropriate backup or fail-safe functions in the system.

MELIPC MI3000

MITSUBISHI ELECTRIC CORPORATION

HEAD OFFICE: TOKYO BLDG., 2-7-3, MARUNOUCHI, CHIYODA-KU, TOKYO 100-8310, JAPAN
NAGOYA WORKS: 1-14, YADA-MINAMI 5, HIGASHI-KU, NAGOYA, JAPAN

Country/Region Sales office
USA+1-847-478-2100
Mexico+52-55-3067-7512
Brazil+55-11-4689-3000
China+86-21-2322-3030
Taiwan+886-2-2299-2499
Korea+82-2-3660-9569

Singapore+65-6473-2308
Malaysia+60-3-7958-3544
Indonesia+62-21-3192-6461
Vietnam+84-28-3910-5945
Thailand+66-2092-8600
Philippines+63-(0)2-8256-8042

India+91-20-2710-2000
Australia+61-2-9684-7777
Germany+49-2102-486-0
UK+44-1707-28-8780
Italy+39-039-60531
Spain+34-935-65-3131

France+33-1-55-68-55-68
Czech Republic...+420-255-719-200
Turkey+90-216-969-2500
Poland+48-12-347-65-00
Russia+7-812-449-51-34
South Africa+27-11-658-8100