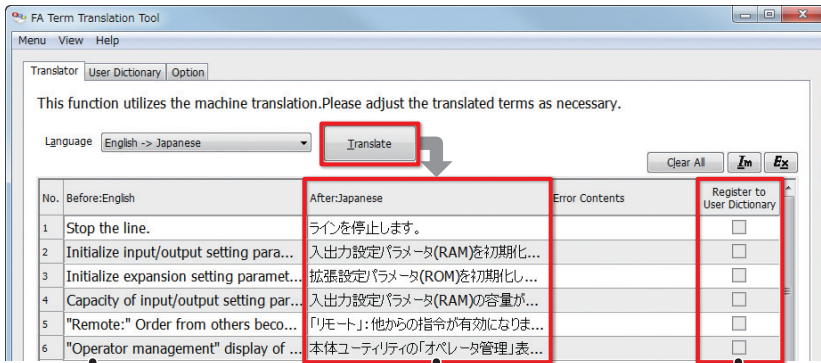




Mitsubishi Graphic Operation Terminal GOT2000 NEWS Vol.6

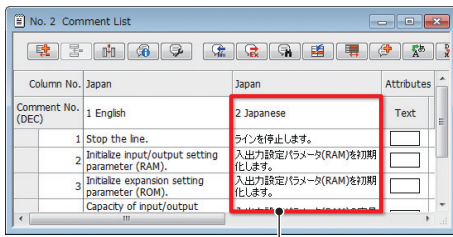
Great support for your creation of multiple language screens

FA Term Translation Tool



- 1 Copy comments (e.g. from GT Works3) and paste them to FA Term Translation Tool
- 2 Translated results are displayed
- 3 Check a checkbox to save it to the dictionary

GT Works3 comment list



- 4 Copy the comments translated with FA Term Translation Tool and paste them to where you want to use them (e.g. GT Works3).
- 5 It is easy to create language switching screens.



It is easy to copy and paste text from FA Term Translation Tool to GT Works3.

Microsoft® Excel®, FA Term Translation Tool, etc.

1	Stop the line.	ラインを停止します。
2	Initialize input/output setting parameter (RAM).	入出力設定パラメータ(RAM)を初期化します。
3	Initialize expansion setting parameter (ROM).	拡張設定パラメータ(ROM)を初期化します。

Copy (Ctrl + C)

GT Works3 comment list

Column No.	Japan	Japan	Attributes
Comment No. (DEC)	1 English	2 Japanese	Text
1	Stop the line.	ラインを停止します。	
2	Initialize input/output setting parameter (RAM).	入出力設定パラメータ(RAM)を初期化します。	
3	Initialize expansion setting parameter (ROM).	入出力設定パラメータ(RAM)を初期化します。	

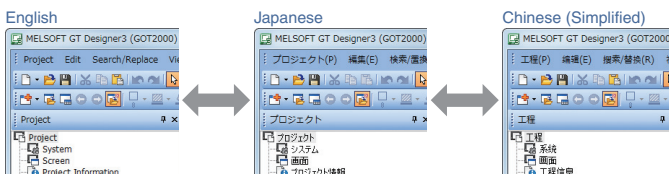
Paste (Ctrl + V)

Multiple columns of translated comments can be copied and pasted from software such as Microsoft® Excel® so that multiple language screens can be created efficiently.

Supported version: GT Works3 Ver.1.134Q or later

[Monthly recommendation]

GT Works3 multi-language support



Easily switch display languages with a single software

The FA Term Translation Tool is the software to translate comments (words, sentences) that are used in MELSOFT applications including GT Works3. You can use the software even when your computer is not connected to the Internet.

Translation between Japanese and other languages (English, Chinese [Simplified], Chinese [Traditional]) is possible. The software uses the FA Term Translation Dictionary provided by Mitsubishi Electric. In addition, it is possible to create your own dictionary to standardize the technical terms.

The comments translated using FA Term Translation Tool can easily be copied and pasted to the comment list of GT Works3.

- How to obtain this tool
- This tool is included with the "MITSUBISHI ELECTRIC FA Library" DVD-ROM of GT Works3 Version 1.130L or later.
For the details, please contact your local sales office.

For the details, please refer to the GOT2000 catalog (L(NA)08270ENG).



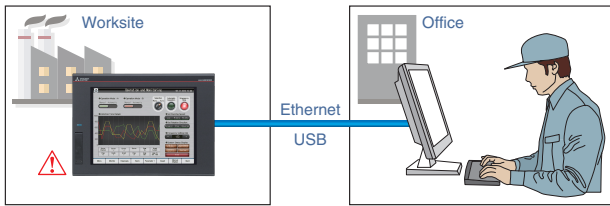
The display language of GT Works3 can be switched. The users can edit the data smoothly by selecting their preferred language.

*: It is recommended to purchase GT Works3 of the language that is supported by the OS to be used.
Procedure: [View] → [Switch Display Language]
Supported version: GT Works3 Ver.1.122C or later

Mitsubishi Graphic Operation Terminal GOT2000 Series

[Monthly recommendation]

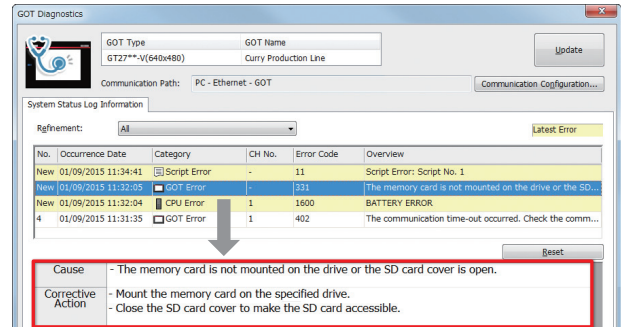
Identify problem cause and take corrective actions quickly



Without visiting the worksite, you can monitor the status of GOTs and CPUs using GT Works3 on a personal computer in your office. You can identify problem cause and take corrective actions quickly without referring to manuals or using GX Works3/GX Works2.

Procedure: [Diagnostics] → [GOT Diagnostics]
Supported version: GT Works3 Ver.1.130L or later

GOT diagnostics function



Problem cause and corrective actions in detail

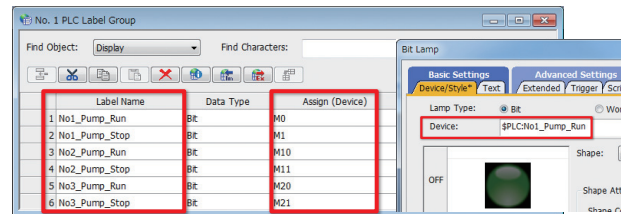
[Monthly recommendation]

Design screens without worrying about actual devices

Instead of using devices, use easy-to-understand names (label names) to create screens. Not only Mitsubishi programmable controller devices, but also third party controller devices and GOT internal devices can be assigned to labels. The labels can easily be managed by defining label groups for each controller and screen.

Procedure: [Common] → [Label] → [New Label Group]
Supported version: GT Works3 Ver.1.122C or later

Label function



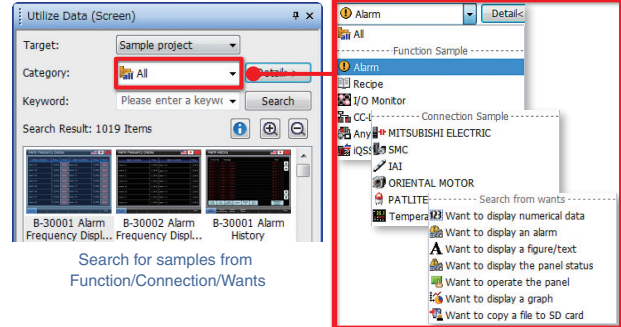
Design screens using label names

Quickly find the screens you need by selecting category

When you utilize screens from sample projects, "Category" helps you quickly narrow down the data you need. Just select and customize sample screens and you can greatly reduce time for screen design.

Procedure: [Screen] → [New] → [Utilize Data]
Supported version: GT Works3 Ver.1.130L or later

Utilize data (screen) function



Precautions for safe use

To use the products given in this publication properly, always read the relevant manuals before beginning operation.

Trademarks and registered trademarks

All products and company names used herein are either trademarks or registered trademarks of their respective owners.

The release date varies depending on the product and your region. For details, please contact your local sales office.

The actual color may differ slightly from the pictures in this catalog. The actual display may differ from what are shown on GOT screen images.

MITSUBISHI ELECTRIC CORPORATION

HEAD OFFICE: TOKYO BLDG., 2-7-3, MARUNOUCHI, CHIYODA-KU, TOKYO 100-8310, JAPAN
NAGOYA WORKS: 1-14, YADA-MINAMI 5, HIGASHI-KU, NAGOYA, JAPAN

Country/Region Sales office
USA+1-847-478-2100
Mexico+52-55-3067-7511
Brazil+55-11-4689-3000
China+86-21-2322-3030
Taiwan+886-2-2299-2499
Korea+82-2-3660-9530

Singapore+65-6473-2308
Thailand+66-2682-6522 to 31
Indonesia+62-21-3192-6461
Vietnam+84-8-3910-5945
India+91-20-2710-2000
Australia+61-2-9684-7777

Germany+49-2102-486-0
UK+44-1707-28-8780
Italy+39-039-60531
Spain+34-935-65-3131
France+33-1-55-68-55-68
Czech+420-251-551-47

Turkey+90-216-526-3990
Poland+48-12-347-65-00
Russia+7-812-633-3497
South Africa+27-11-658-8100