



for a greener tomorrow

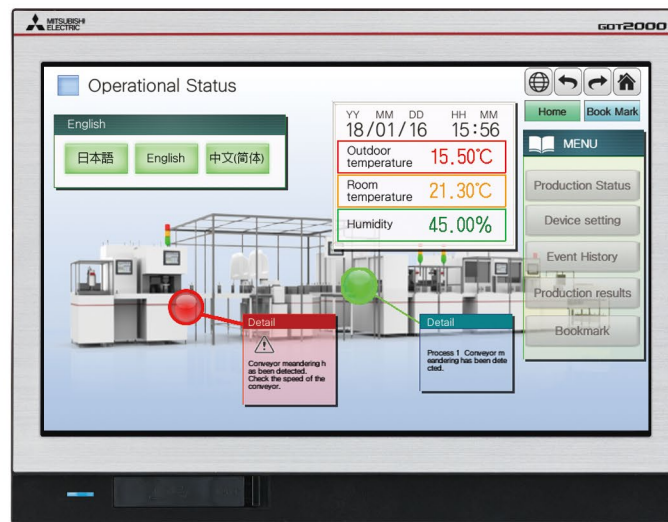
Mar. 2018
GT Works3 Ver. 1.185T

Graphic Operation Terminal GOT2000 NEWS Vol.9

Support for total screen design New graphics mode [GOT Graphic Ver. 2] release!

Easily create stylish screens with a click

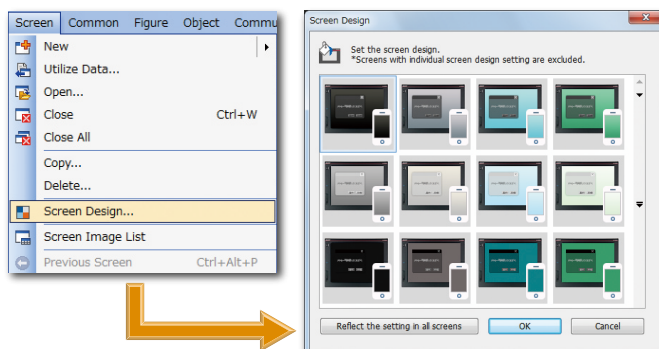
New graphics mode [GOT Graphic Ver. 2]



Select your favorite design theme

Simply select your favorite design from a series of themes to easily set a background with beautiful gradation. Project data created in GT Designer3 Ver. 1.185T and earlier can also be used by converting it into the new graphics mode.* Of course, you can also customize each screen individually.

* Some functions have restrictions. For details, refer to GT Designer3 (GOT2000) Screen Design Manual.



More advanced features!

- 1 Gradation can be set for screen backgrounds
- 2 Window screens and alarm popup displays can be transparent
- 3 Contour shapes can be set for the window screen
- 4 System key window design is more stylish than ever
- 5 Figure antialiasing results in improved appearance
- 6 Configure and change all screen backgrounds at once

Check inside for more details ▶▶▶

Support for total screen design

NEW

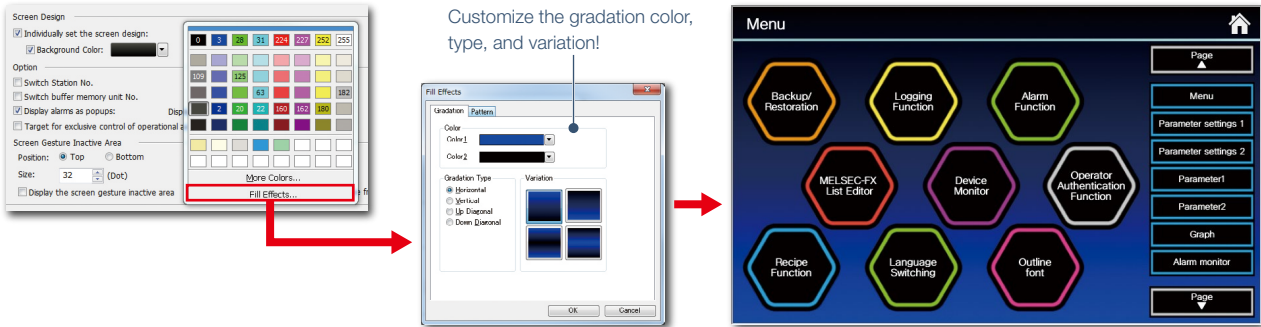
Six advanced features

New graphics mode [GOT Graphic Ver. 2]

POINT

1 Gradation can be set for screen backgrounds

In screen properties "Fill Effects", you can easily configure two-color gradation. Also, you can select the gradation type and variation.

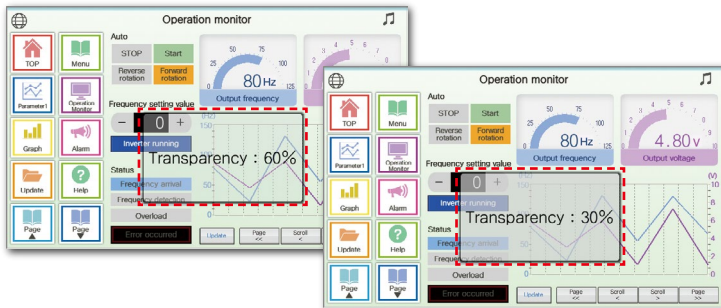


POINT

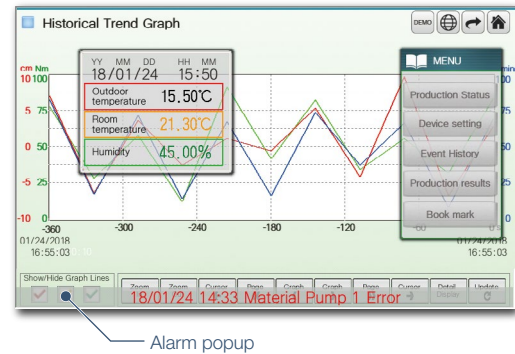
2 Window screens and alarm popup displays can be transparent

The background color transparency can be changed in window screens. You can check and control the window screen while viewing the overall image of the base screen. Alarm popups turns transparent as well so that they do not block the base screen underneath.

Configure the transparency of the window screen



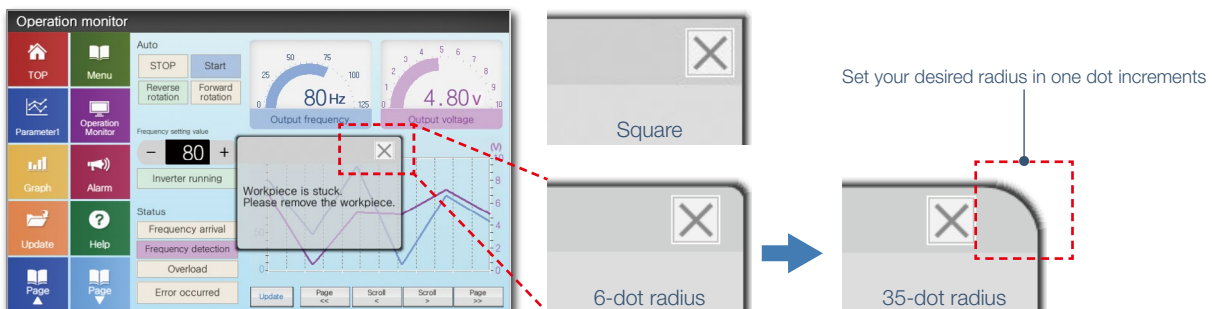
Transparent alarm popup display



POINT

3 Contour shapes can be set for the window screen

Both square and rounded contours are available for window screens. The radius can be adjusted for rounded contours.



POINT
4 System key window design is more stylish than ever

Multiple system key windows are available for your screen design.

Select a preset that fits your screen design to use a matching numeric keypad. The key window is made transparent when moved so that you can check the screen underneath.

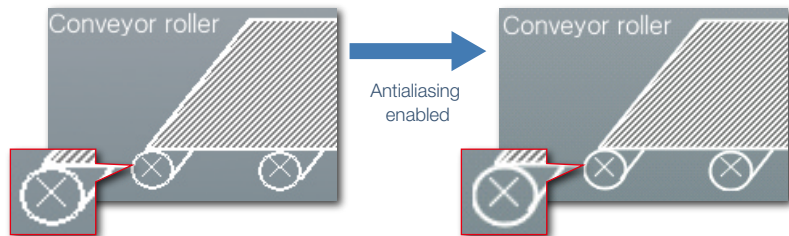
* Not supported by GT23, GT21.



POINT
5 Figure antialiasing results in improved appearance

Antialiasing is now available for figure contours in addition to on-screen text.

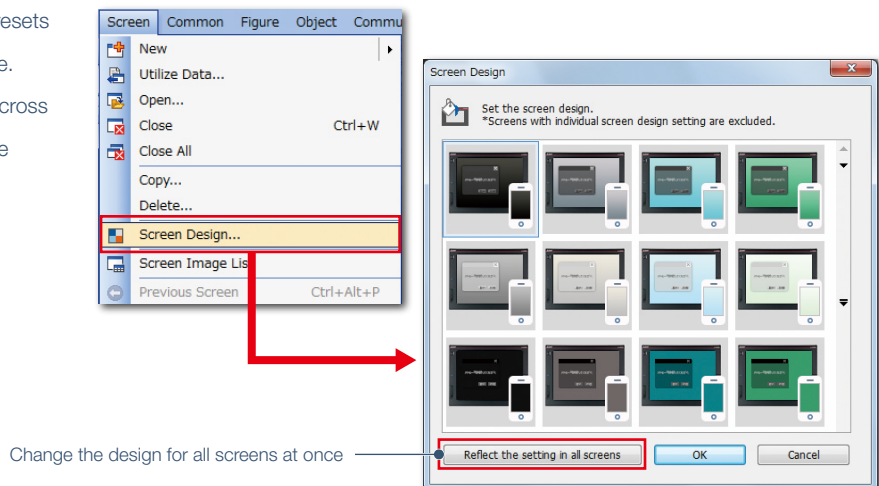
Overall screen display is smoother for stress-free, beautiful screen production.



POINT
6 Configure and change all screen backgrounds at once

Simply select your favorite design from presets to change all screen backgrounds at once.

You can keep screen design consistent across the entire project and reduces steps in the process.



Support for screen utilization

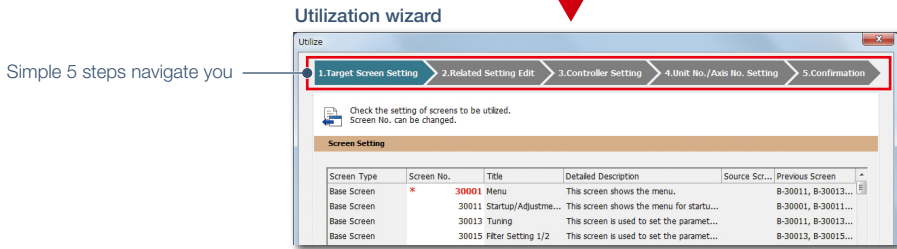
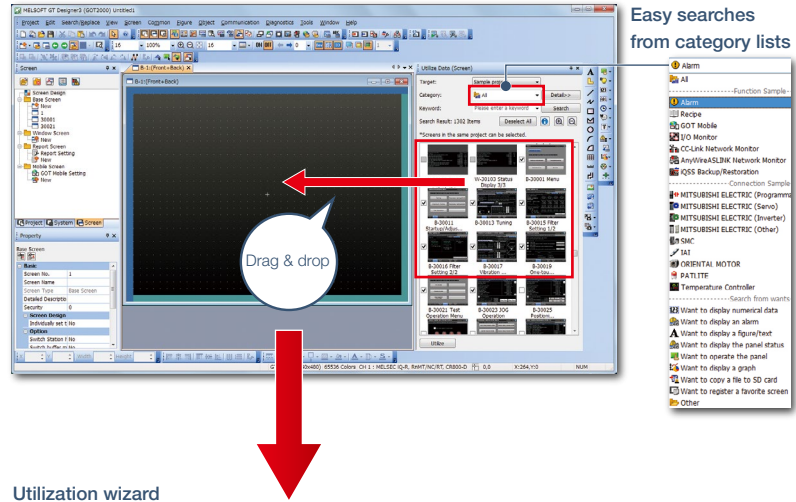
Upgraded

Simpler screen utilization than ever Utilization wizard

POINT 1 Easily utilize sample screens or existing project data

Individual screens can be utilized from past projects and sample projects. Screens you want to utilize can be easily searched by using categories or keywords.

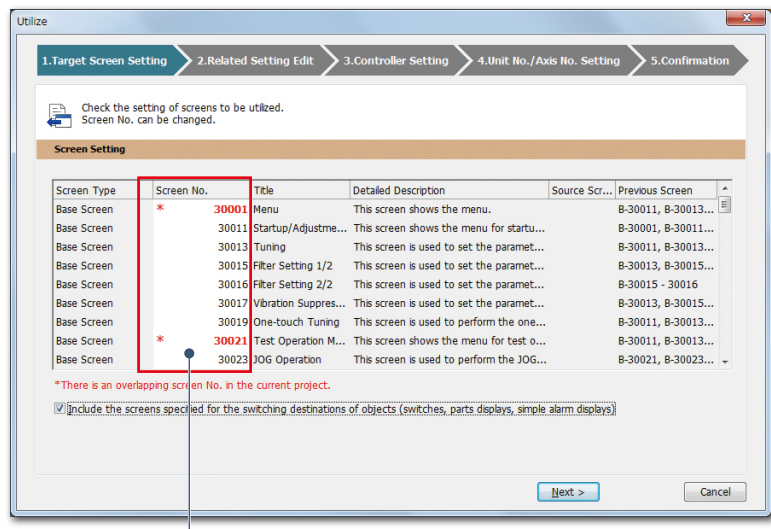
Select multiple screens, then drag and drop to launch the utilization wizard. With the five step setting in the wizard screen, the screen data can be easily utilized.



POINT 2 Easily utilize multiple screens by following the instructions in the wizard screen and simply configure settings

Utilization wizard: Target screen setting
Select multiple screens, then drag and drop to launch the utilization wizard.

If the screen numbers of the currently editing project and the source project are duplicated, the number is displayed in red. Thus, you can find a number that is not being used in the editing project.



The screen numbers that are duplicated with the editing project are displayed in red

POINT

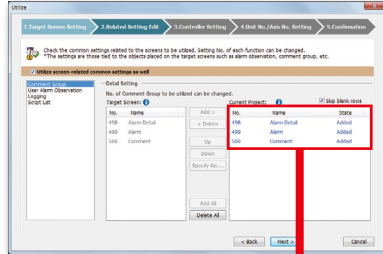
3 Settings related to target screen (comment group, logging, scripts, etc.) can also be utilized

Utilization wizard: Related setting edit

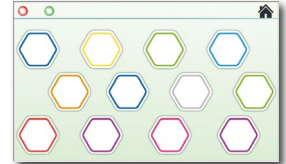
Comment groups and scripts related to the target screen can also be utilized at the same time.

The related settings are listed in the utilization wizard, so you can easily choose whether or not to utilize them or change the destination number.

When utilizing a comment group



Previously Comments should be set again...



Now Simply utilize settings!



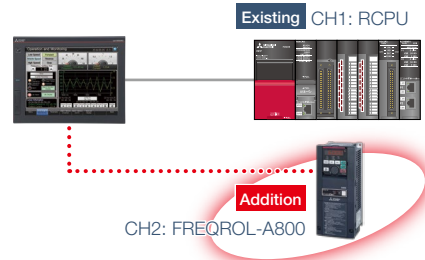
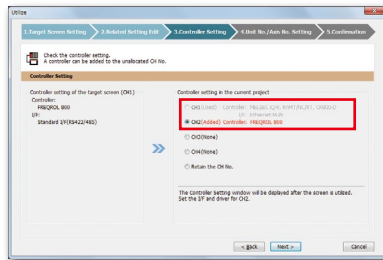
POINT

4 Easily change target screen controller settings

Utilization wizard: Controller setting

Target screen controller settings can be assigned to an empty channel in the currently editing project.

Add target screen controller devices to CH2

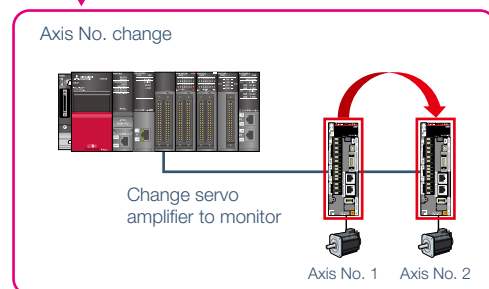
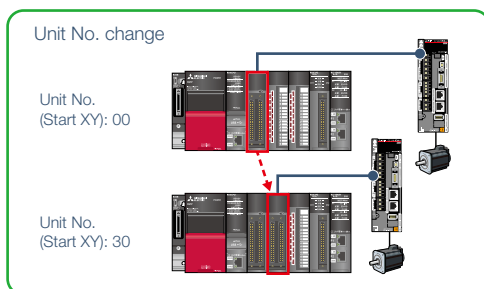
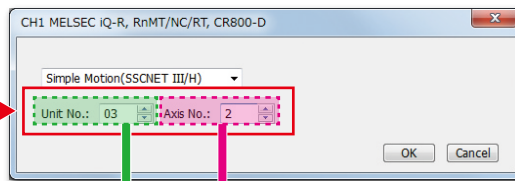
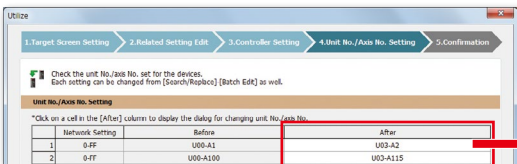


POINT

5 You can change the servo amplifier axis No. and Simple Motion unit No. to match the actual configuration at once

Utilization wizard: Unit No./Axis No. setting

When utilizing screens whose system configuration is different, you can easily change the unit No. and the axis No. of the target screen.



Support for screen creation

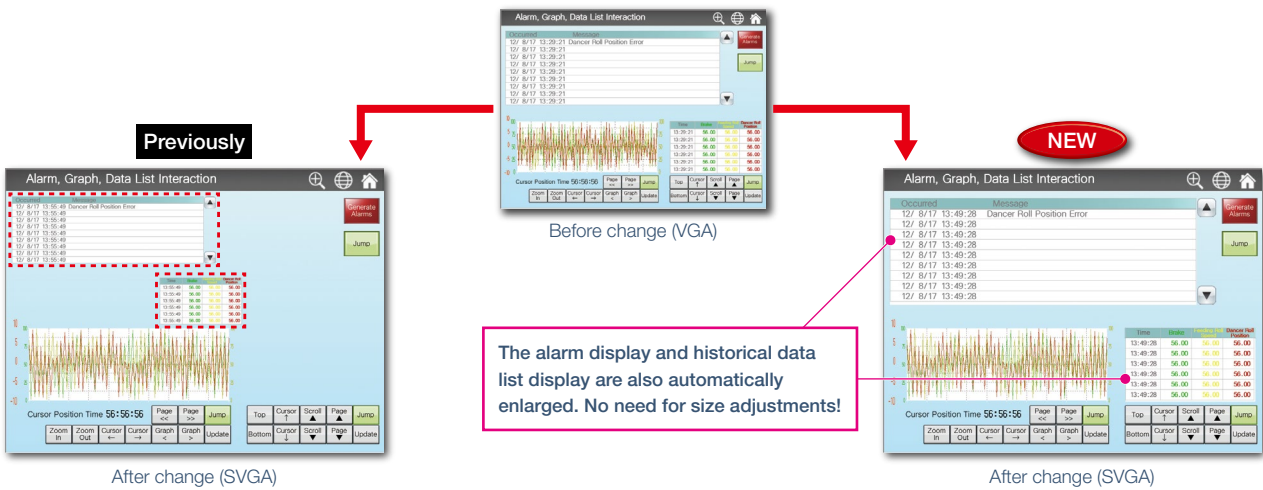
Upgraded

Enhanced automatic scaling functions for GOT type conversion GOT type conversion

The alarm display and historical data list display have been added as automatically resizable objects when changing GOT types with differing resolutions. It is now easier than ever to utilize screens of different resolutions, making the work process more efficient.

Added objects: Alarm display, historical data list display, data list display, recipe display (record list)

When changing the GOT type resolution from VGA to SVGA



Support for startup

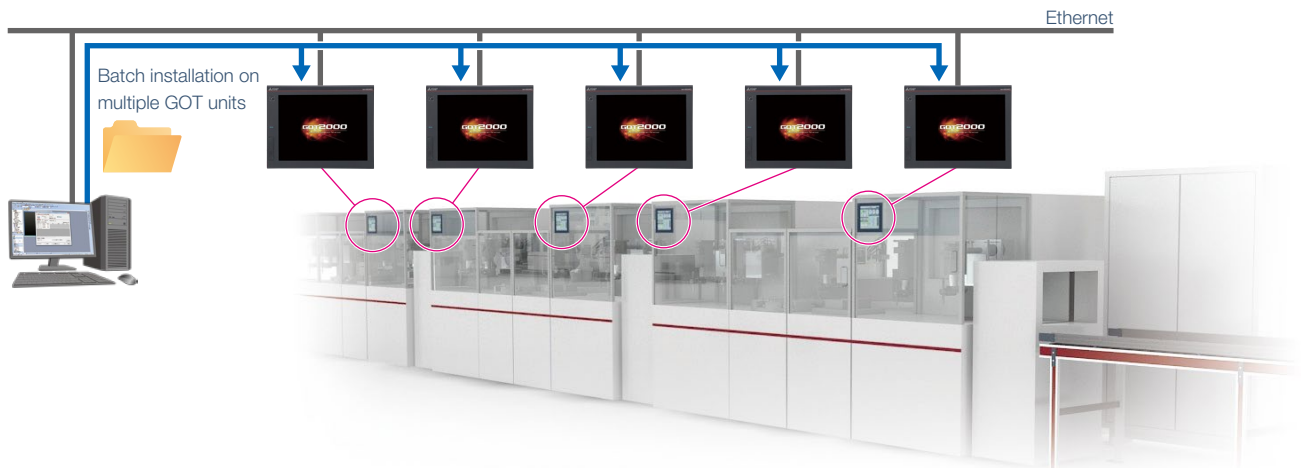
Upgraded

Easily update project data Data transfer

Single package data (project data, communication drivers, etc.) can be installed on multiple GOT units connected via Ethernet at once.

Batch installation on multiple GOT units reduces data transfer time and prevents data update omission. (Maximum 256 units)

When multiple GOT units share the same project data on a large equipment, this feature reduces screen correction and update tasks.



Support for on-site troubleshooting

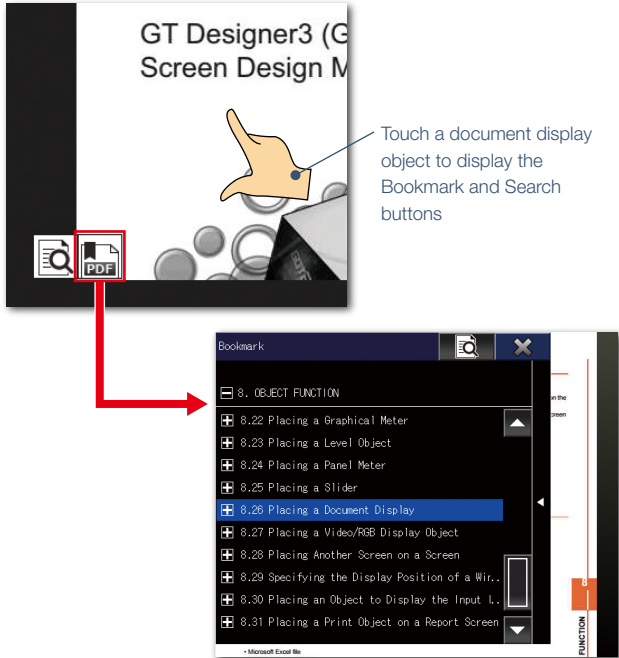
Upgraded

Instantly access the item you want to check on a PDF Document display

With bookmark display and keyword searches, you can instantly check the information you want.

* Not supported by GT23, GT21.

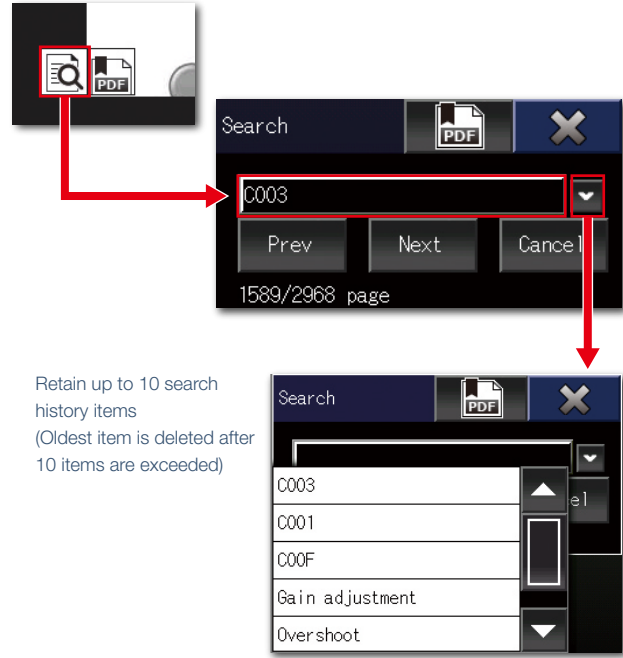
Bookmark display



Touch a document display object to display the Bookmark and Search buttons

Display the "Bookmark" window and move to the page you want to display from "Bookmark"

Searching for a string



Retain up to 10 search history items (Oldest item is deleted after 10 items are exceeded)

Display the search window and enter a keyword to move to a page containing the keyword

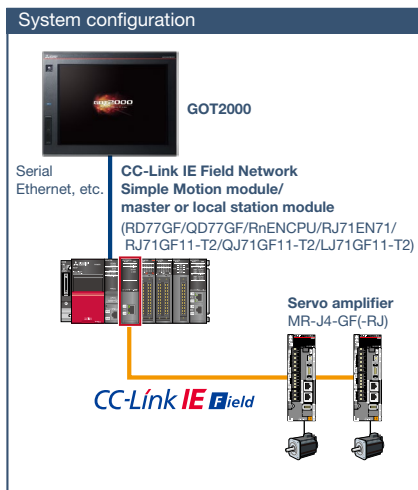
NEW

Easier to use with drive controllers Drive recorder function



Monitoring of servo amplifiers connected in the CC-Link IE Field Network is supported. The drive recorder function is also supported and servo data (motor current, position commands, etc.) can be monitored on the GOT, which is useful when problems occur.

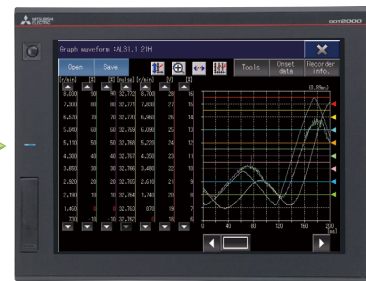
* Not supported by GT23, GT21.



Drive recorder information list screen



Graph waveform screen



Export servo data to an SD memory card or USB memory on the GOT to check and analyze it in the office.

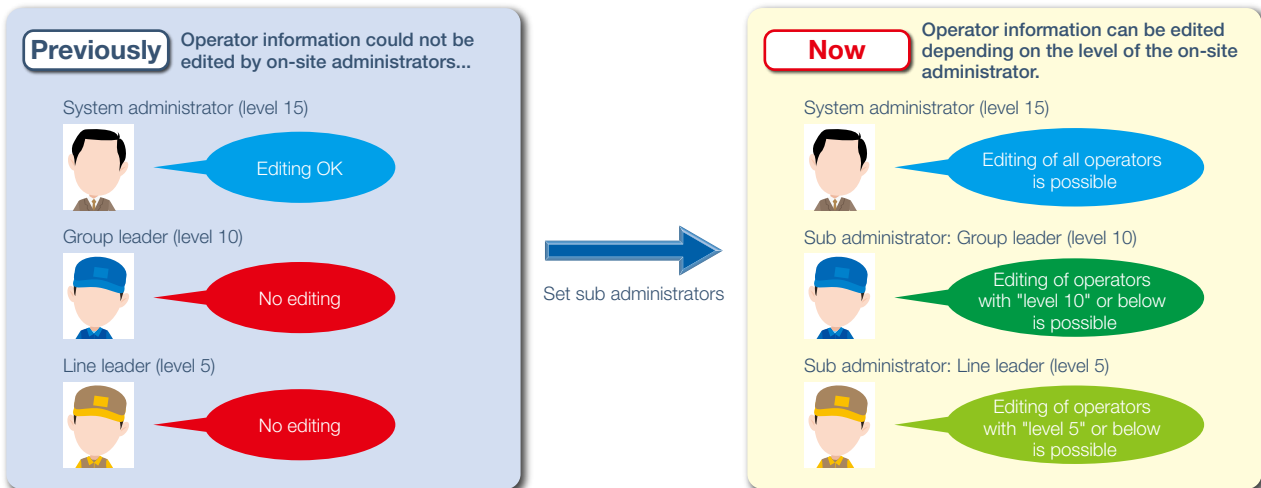
Support for security and system operation

Upgraded

Operator management with multiple administrators Operator authentication

Setting of "sub administrator" makes it possible to edit operator management information even for non system administrators. You can set the sub administrator level (privileges) and limit the area that can be edited at that level, which maintains security and enables operator management by multiple administrators.

* Not supported by GT21.

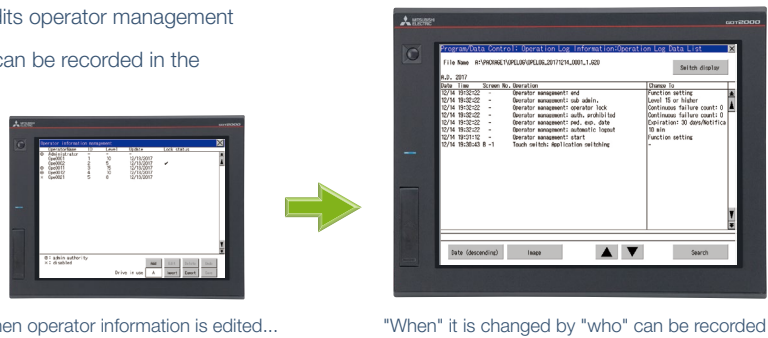


Upgraded

Edited operator information can be recorded in the operation log Operation log

When a system administrator or sub administrator edits operator management information, who edited what information and when can be recorded in the operation log.

* Not supported by GT21.



The release date varies depending on the product and your region. For details, please contact your local sales office.

The actual color may differ slightly from the pictures in this catalog. The actual display may differ from what are shown on GOT screen images.

⚠ Precautions for safe use

To use the products given in this publication properly, always read the relevant manuals before beginning operation.

Trademarks and registered trademarks

All product and company names used herein are either trademarks or registered trademarks of their respective owners.

MITSUBISHI ELECTRIC CORPORATION

HEAD OFFICE: TOKYO BLDG., 2-7-3, MARUNOUCHI, CHIYODA-KU, TOKYO 100-8310, JAPAN
 NAGOYA WORKS: 1-14, YADA-MINAMI 5, HIGASHI-KU, NAGOYA, JAPAN

Country/Region Sales office
 USA+1-847-478-2100
 Mexico+52-55-3067-7511
 Brazil+55-11-4689-3000
 China+86-21-2322-3030
 Taiwan+886-2-2299-2499
 Korea+82-2-3660-9530

Singapore+65-6473-2308
 Thailand+66-2682-6522 to 31
 Indonesia+62-21-3192-6461
 Vietnam+84-8-3910-5945
 India+91-20-2710-2000
 Australia+61-2-9684-7777

Germany+49-2102-486-0
 UK+44-1707-28-8780
 Italy+39-039-60531
 Spain+34-935-65-3131
 France+33-1-55-68-55-68
 Czech+420-251-551-470

Turkey+90-216-526-3990
 Poland+48-12-347-65-00
 Russia+7-812-633-3497
 South Africa+27-11-658-8100