



for a greener tomorrow

Graphic Operation Terminal GOT2000 NEWS Vol.12

Jan. 2021

GOT2000 Series/MELIPC MI3000 Maintenance Solutions & Video Solutions



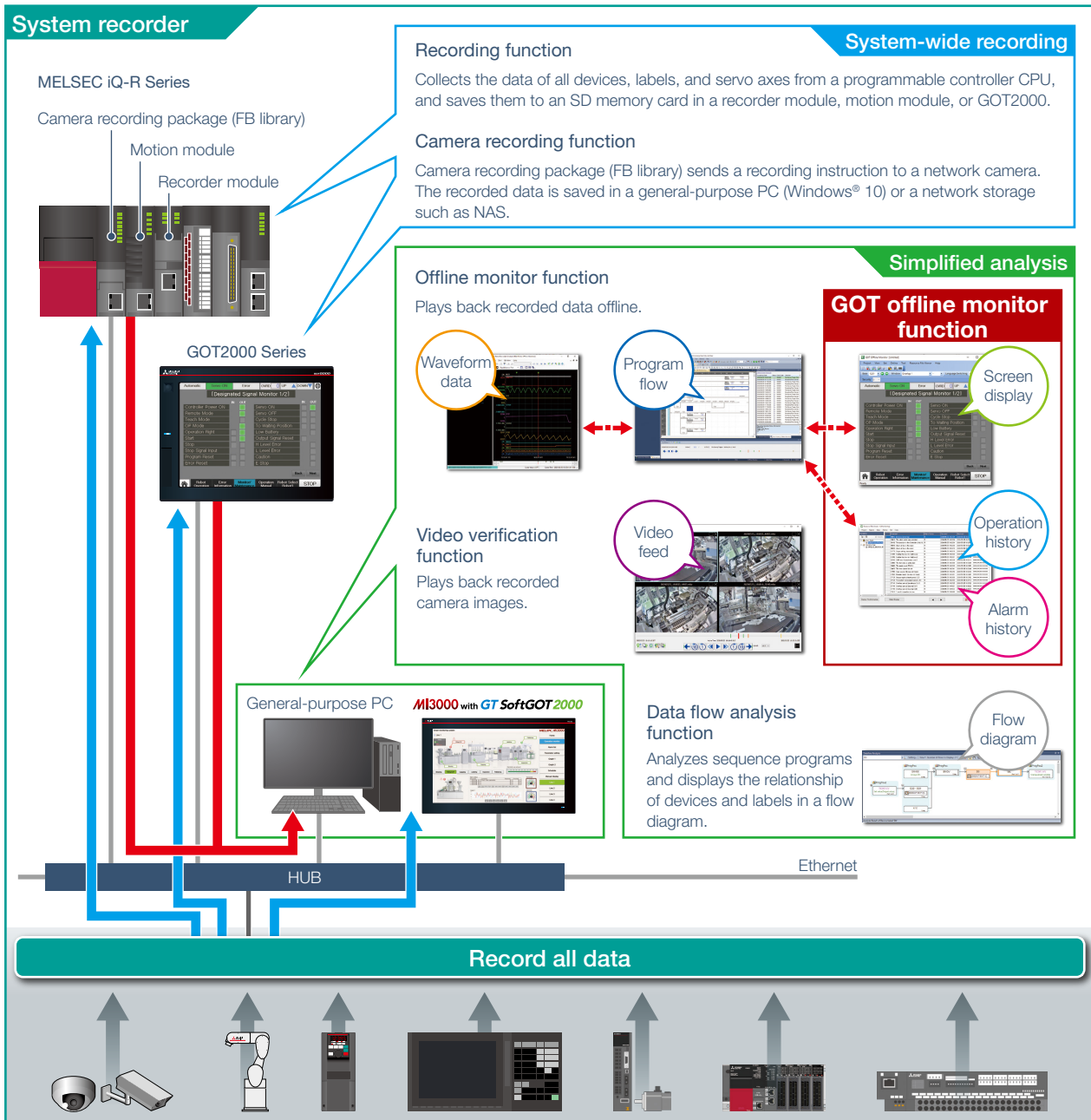
- System-wide recording of production at a problem occurrence
- Simplified analysis using data, waveform, and video feeds
- Support visualization with various video solutions



Maintenance Solutions

Graphically monitor production at a problem occurrence and support corrective maintenance

The GOT offline monitor function reproduces the on-site GOT screen graphically with a dedicated tool on a personal computer by using device values of the data (recording file) that was recorded by the system recorder before and after a problem occurrence. The problem cause can be identified efficiently by associating historical alarms and operation logs with the state when a problem occurred at the shop floor.



What is system recorder?

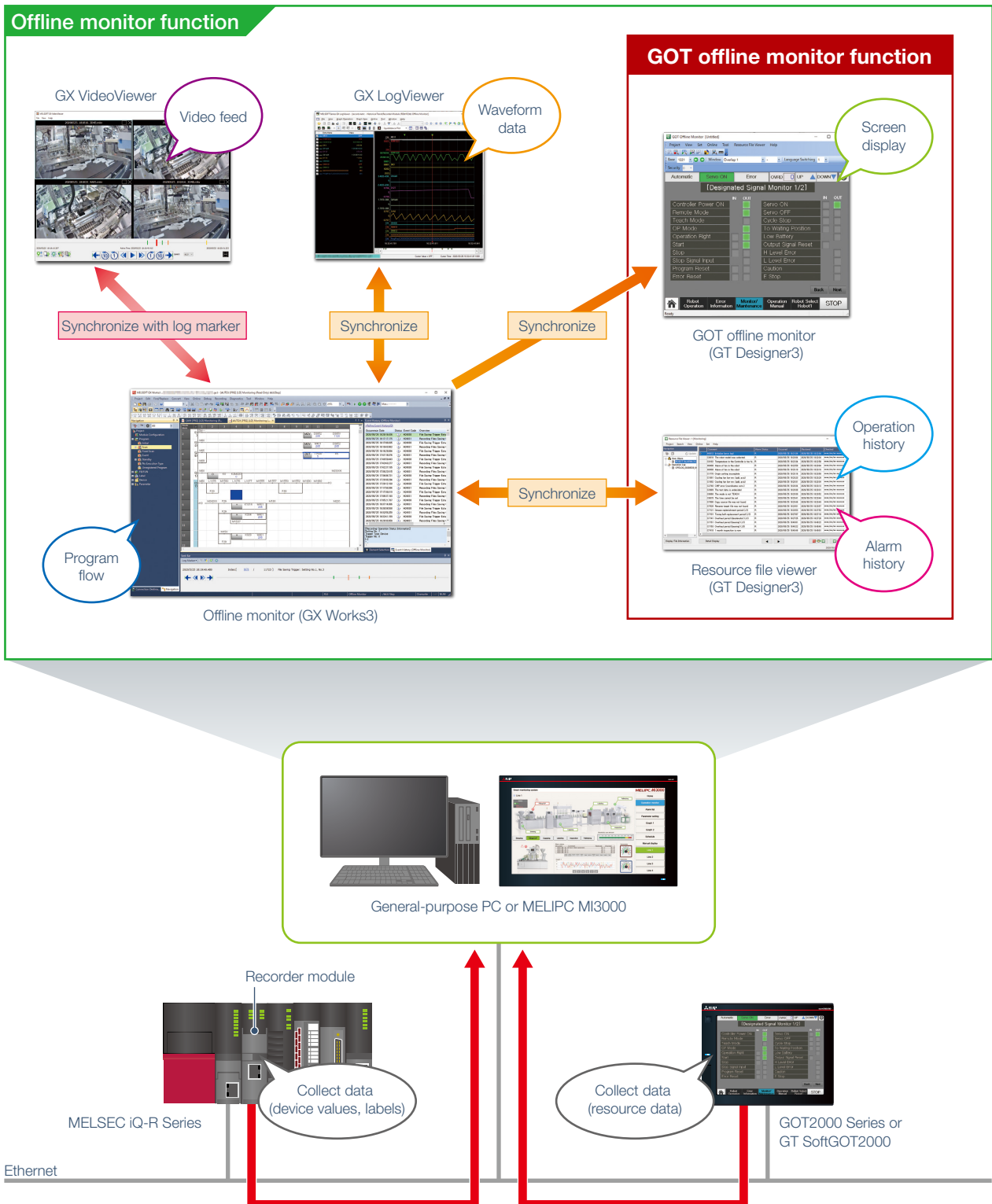
The system recorder is a corrective maintenance solution that ensures effective resumption of operations reducing downtime through its extensive system-wide data recording and simplified analysis software features.

★For the details, please refer to the iQ Platform-compatible PAC System Recorder catalog (L(NA)08736ENG).



Offline monitor function

Data (such as device values and labels) can be recorded by using the MELSEC iQ-R Series recorder module, and the changes in data values can be played back offline in a program or waveform display. Camera video feeds can be played back together to check the data in detail when a problem occurred on the shop floor. In addition, synchronizing the data with the GOT offline monitor function enables checking what happened at the shop floor with the data such as the GOT screen display, operation history, and alarm history having the same time stamp along with the flow of a program.



GOT offline monitor function

The GOT offline monitor function reads the project file from the on-site GOT to the GOT offline monitor (GT Designer3) on a personal computer, and provides the following two functions.

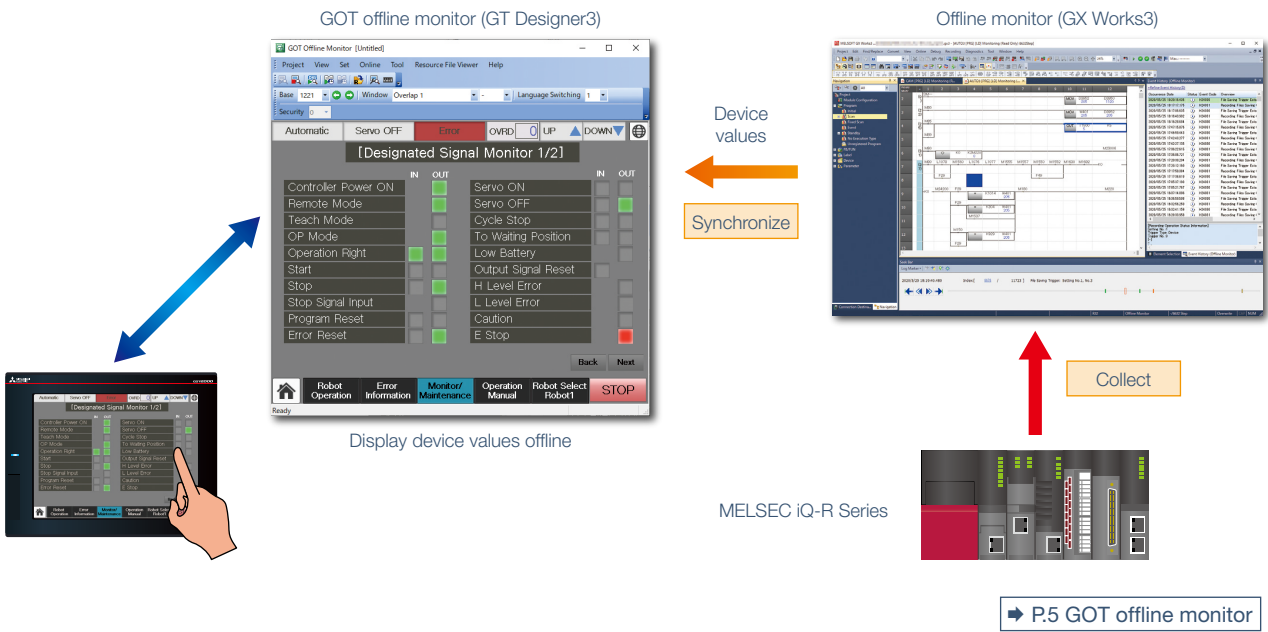
GOT offline monitor: Synchronizing the GOT project data with the offline monitor (GX Works3) and displaying the changes in device values.

Resource file viewer: Synchronizing the GOT resource file with the offline monitor (GX Works3) and displaying the changes in operation logs and alarms.

These can be used to check what happened at the shop floor when an error occurred by synchronizing the data such as device values, operation logs, and alarm history with the flow of a program.

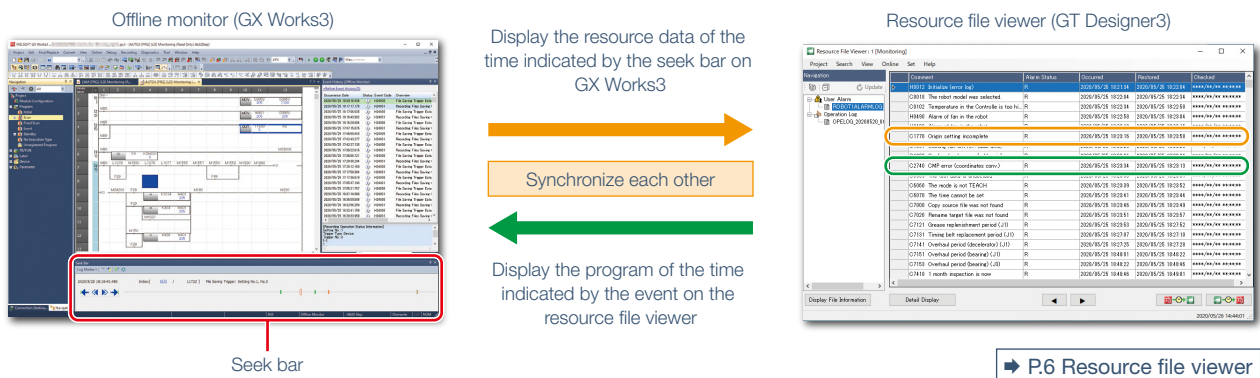
Synchronized display of control panel screen and program

The GOT offline monitor graphically displays device values of the data (recording file) that was recorded by the system recorder before and after a problem occurrence on a personal computer.



Synchronized display of equipment operation history, alarm history, and program

Synchronizing with the offline monitor (GX Works3) enables to jump back and forth between GX Works3 program monitoring and GT Designer3 resource file viewer. Operation logs and alarms of the on-site GOT (or GT SoftGOT2000) can be checked to monitor the shop floor.



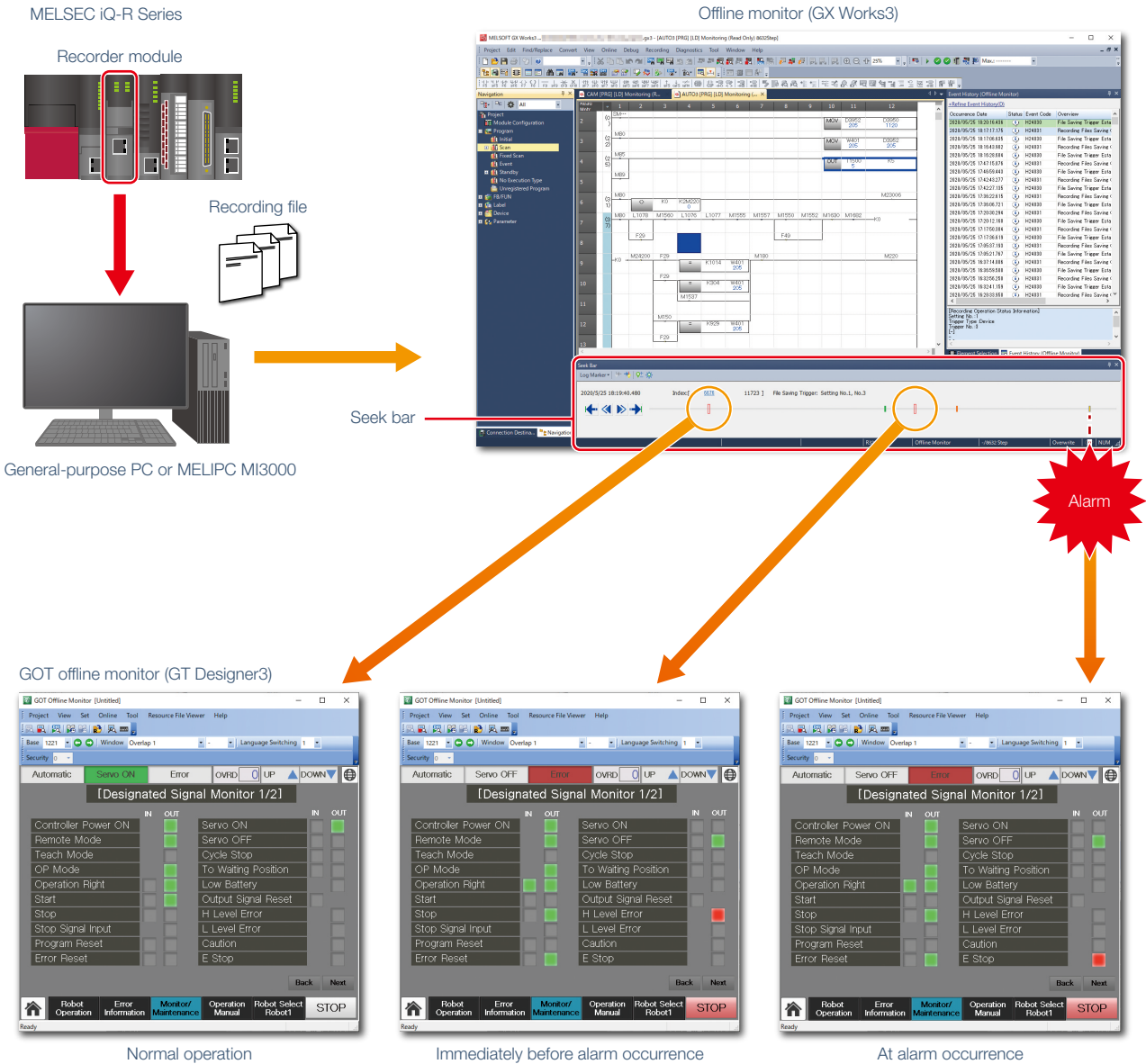
Synchronized display of control panel screen and program

◆ GOT offline monitor **NEW**

GT27 GT25 GT23 GT21 GS21 SoftGOT

The GOT offline monitor graphically displays device values of the data (recording file) that was recorded by the system recorder before and after a problem occurrence on a personal computer.

Since the operation screen and the program having the same time stamp can be reproduced along with the operation of the seek bar on GX Works3, the actual operation and the state of the equipment can be checked simultaneously, thus helping to identify the cause of the problem quickly.



■ Seek bar

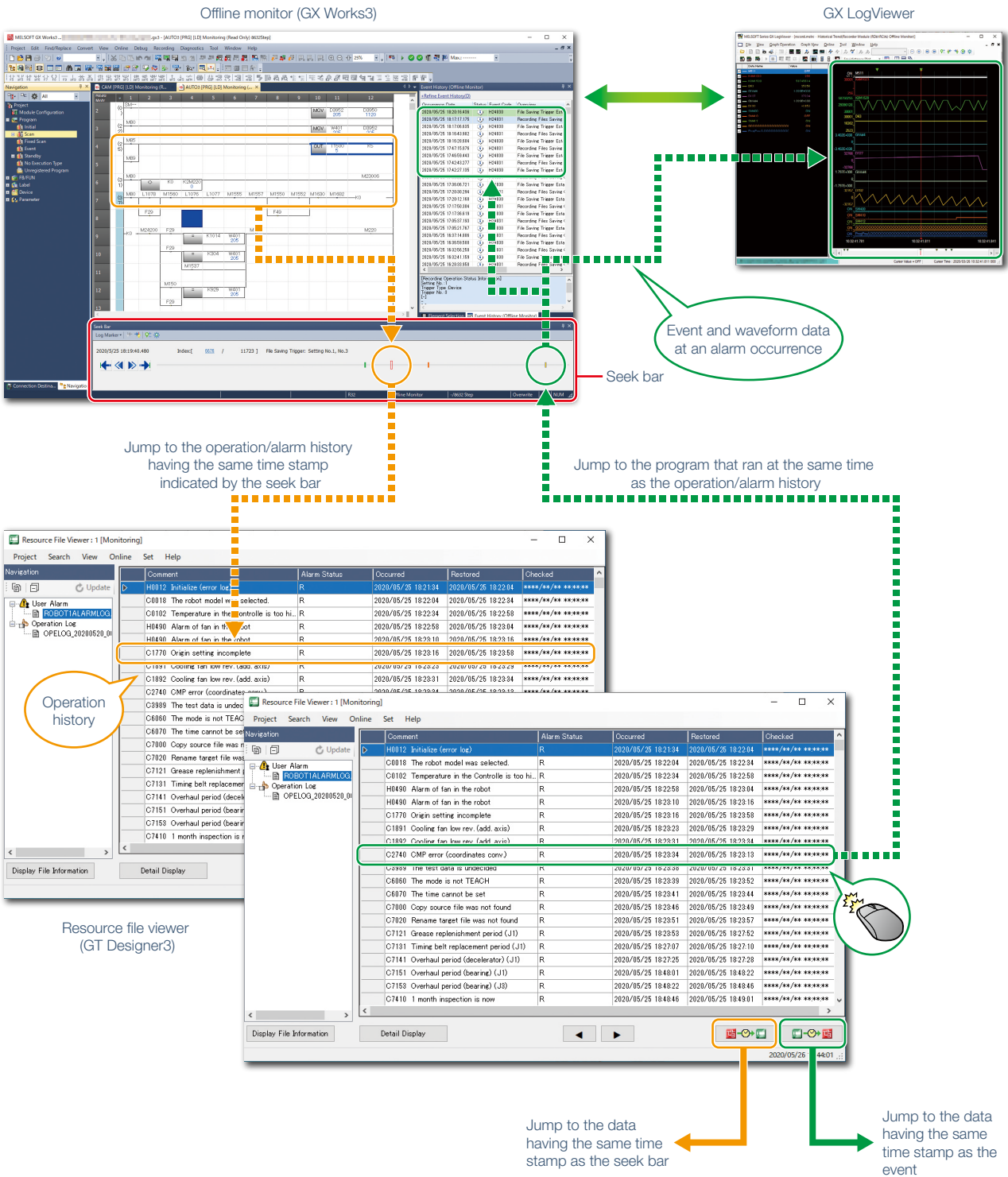
Seek bar is the function to specify the index (consecutive number that is recorded for each scan of the recording file) of the data to monitor. Operating the slider on the seek bar enables to jump to the event information of the specified index, or jump to a tool that interacts with the offline monitor so that the data can be checked by synchronizing the time among recorded data.

Synchronized display of equipment operation history, alarm history, and program

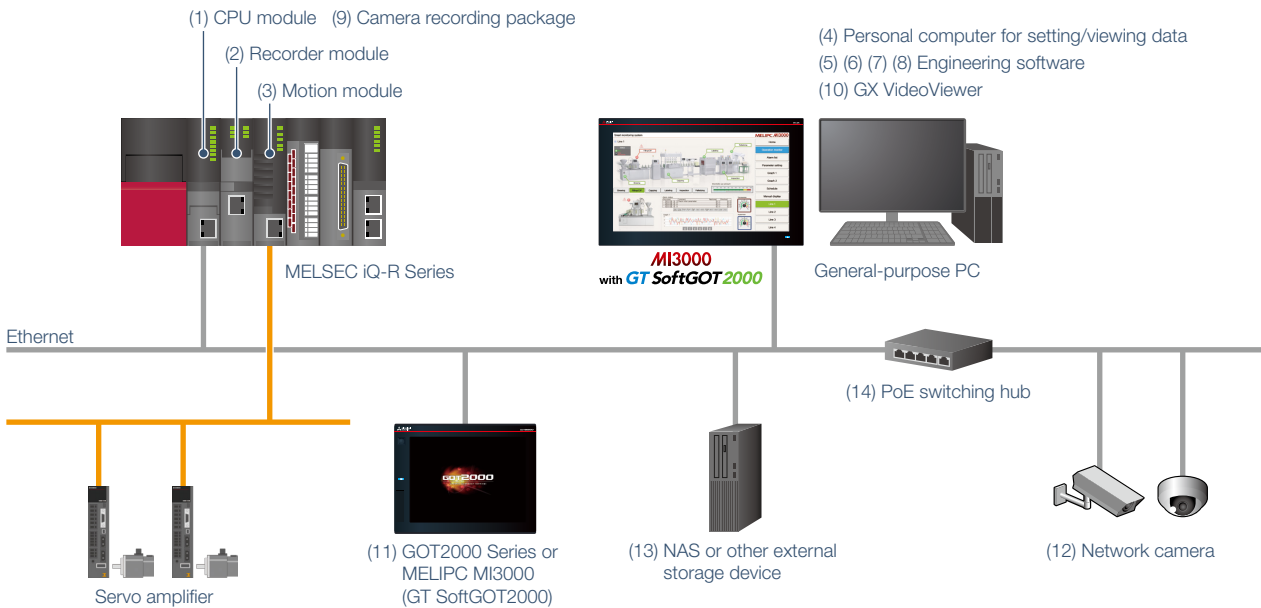
◆ Resource file viewer **NEW**

GT27 GT25 GT23 GT21 GS21 SoftGOT

The resource file viewer displays the operation history and the alarm history from the resource files recorded on GOT. By synchronizing the time between the seek bar of the offline monitor (GX Works3) and the events (operation history, alarm history) on GOT, the relationship between the event data before and after an alarm occurrence and the flow of a program can be checked.



System configuration example



| Required items | | | |
|----------------|--|---|---|
| (1) | MELSEC iQ-R Series CPU module | | Data of all devices and labels is collected from a programmable controller CPU with time stamps, and saved to an SD memory card in a recorder module. |
| (2) | Recorder module | RD81RC96 | |
| (3) | Motion module | RD78GH RD78G | When an error occurs, data such as speed, torque, and positioning is automatically collected from MELSERVO-J5 Series servo amplifiers that are connected to a motion module, and saved to an SD memory card in the motion module with time stamps. |
| (4) | Personal computer for setting/viewing data | General-purpose PC + display or MELIPC MI3000 | Used to make settings of the system recorder function and to check the recorded data. |
| (5) | Engineering software*1 | GX Works3 (offline monitor) | Software to playback the recording file that was saved to an SD memory card in a recorder module. |
| (6) | | GX LogViewer | Used to check the device state and servo axis data in a waveform display. |
| (7) | | GT Designer3 (GOT offline monitor) GT Designer3 (resource file viewer) | Software to graphically reproduce device values of the data (recording file) that was recorded by the system recorder before and after a problem occurrence on a personal computer. Software to display the list of operation history and alarm history from the resource files recorded on GOT. |
| (8) | | GX Works3 (data flow analysis) | Software to analyze sequence programs and display the relationship of devices and labels in a flow diagram. |
| (9) | Camera recording package (FB library)*2*3 | | The camera recording package is a FB library that issues recording instruction to a network camera connected to the Ethernet port and records camera images by synchronizing with a CPU module. The recorded video feeds can be played back on GX VideoViewer. |
| (10) | GX VideoViewer*2 | | |
| (11) | GOT2000 or MELIPC MI3000 (GT SoftGOT2000) | | Used to operate the control panel at the shop floor. Data such as the history of operations by operators and the errors of equipment is recorded to a resource file. |
| (12) | Network camera*3 | AXIS® M1065-L, etc. | Used to obtain a camera image from the shop floor. |
| (13) | NAS or other external storage device | | Used to save the recorded data and video feeds. The data can also be saved to a personal computer ((4) in the above) or an SD memory card in a recorder module. |
| (14) | PoE switching hub*4 | | IEEE802.3at (PoE+) supported |

*1 GX Works3 Ver.1.065T or later, GX LogViewer Ver.1.106K or later, and GT Designer3 Ver.1.236W or later can be used.

*2 For the details of camera recording package (FB library) and GX VideoViewer, please contact your local sales office.

*3 For the supported network cameras, please refer to the Technical Bulletin "Network cameras supporting the Camera recording package" (FA-A-0306).

*4 PoE is an abbreviation of Power over Ethernet.

Network Camera and Video Solutions

Record production at a problem occurrence and quickly analyze with video feeds

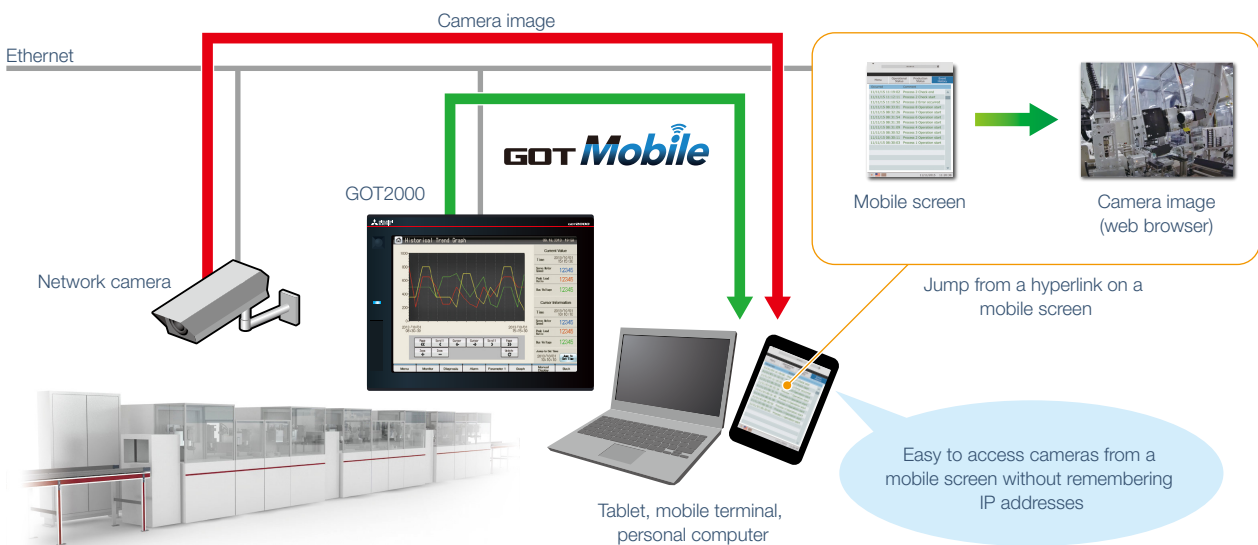
The GOT2000 Series provides various solutions using IP camera and video to meet the needs on the shop floor such as checking video feeds from a remote location and saving camera images before and after an error occurrence.

Checking camera images from a remote location

◆ GOT Mobile function hyperlink

GT27 GT25 GT23 GT21 GS21 SoftGOT

Start a web browser on a personal computer or a tablet using the GOT Mobile function, and check live camera images and video feeds saved in a network camera on the browser. It is easy to access cameras without remembering their IP addresses by setting them on a mobile screen in advance.



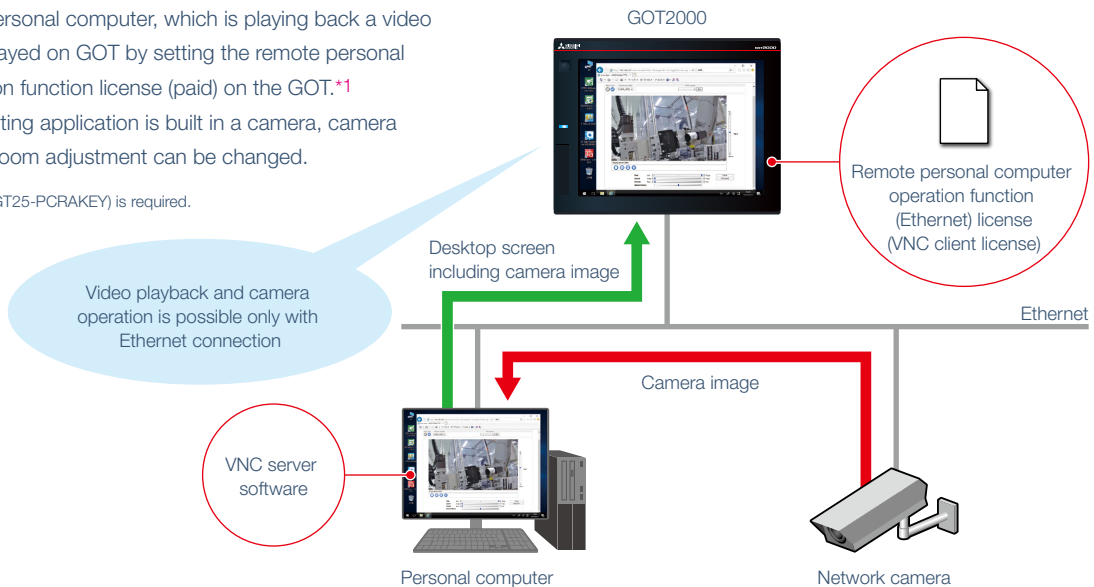
Checking video feeds collected by a personal computer on on-site GOT (Ethernet connection)

◆ Remote personal computer operation function (Ethernet)

GT27 GT25 GT23 GT21 GS21 SoftGOT

The screen of a personal computer, which is playing back a video feed, can be displayed on GOT by setting the remote personal computer operation function license (paid) on the GOT.*1 In addition, if a setting application is built in a camera, camera settings such as zoom adjustment can be changed.

*1 A separate license (GT25-PCRAKEY) is required.



Checking video feeds collected by a personal computer on on-site GOT (RGB connection)

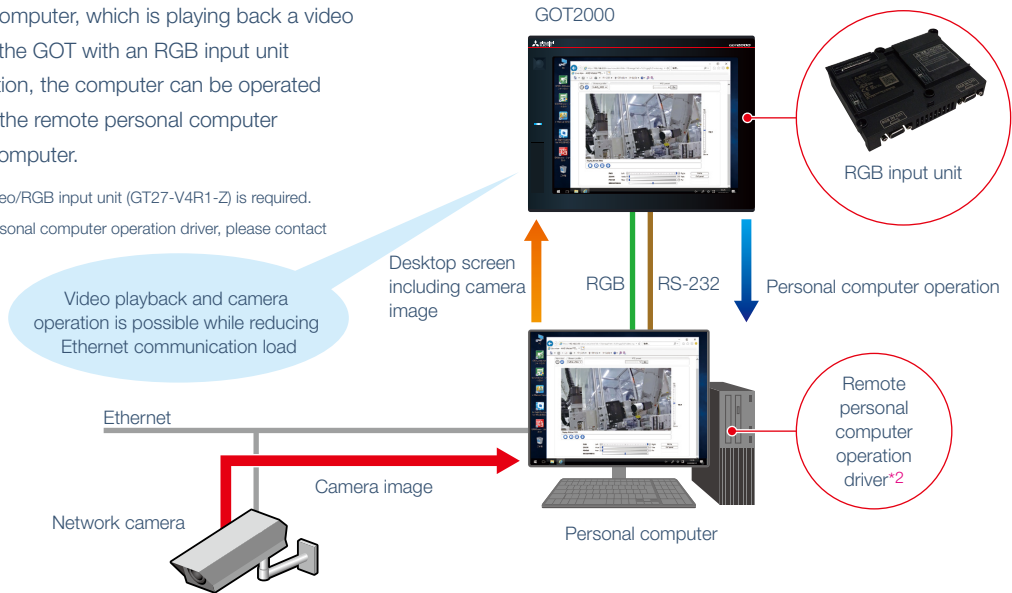
◆ RGB display function

GT27 GT25 GT23 GT21 GS21 SoftGOT * Excluding GT2705

The screen of a personal computer, which is playing back a video feed, can be displayed on the GOT with an RGB input unit (option)*1 installed. In addition, the computer can be operated from the GOT by installing the remote personal computer operation driver*2 on the computer.

*1 RGB input unit (GT27-R2) or video/RGB input unit (GT27-V4R1-Z) is required.

*2 For the details of the remote personal computer operation driver, please contact your local sales office.



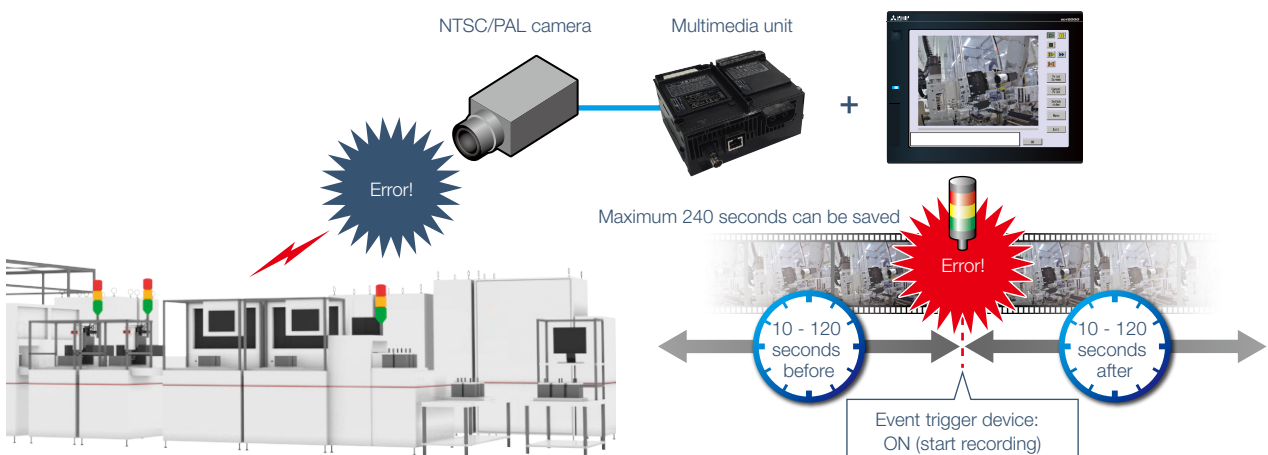
Recording on GOT by using an error as a trigger

◆ Multimedia function*1

GT27 GT25 GT23 GT21 GS21 SoftGOT * Excluding GT2705

GOT displays and records the image taken by a video camera connected to the multimedia unit (installed on GOT) and plays back the video that is saved to a data storage. When an error occurs on an equipment, it can be used as a trigger to start recording and the video before and after the error can be recorded.

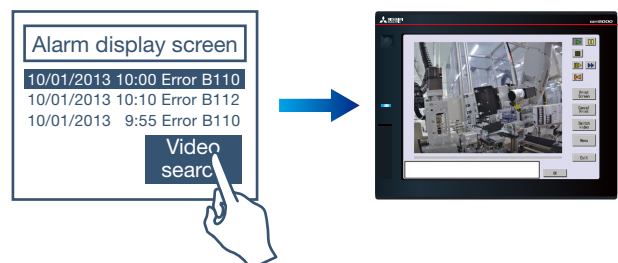
*1 Multimedia unit (GT27-MMR-Z) and CF card are required.



Easy to play video on the alarm display screen

Since the recorded data can be played back by linking it to the error that was set as a recording trigger, it is useful to analyze the cause of the error on the shop floor.

There is no need to create a screen to playback video feeds. The dedicated multimedia screen can be used.

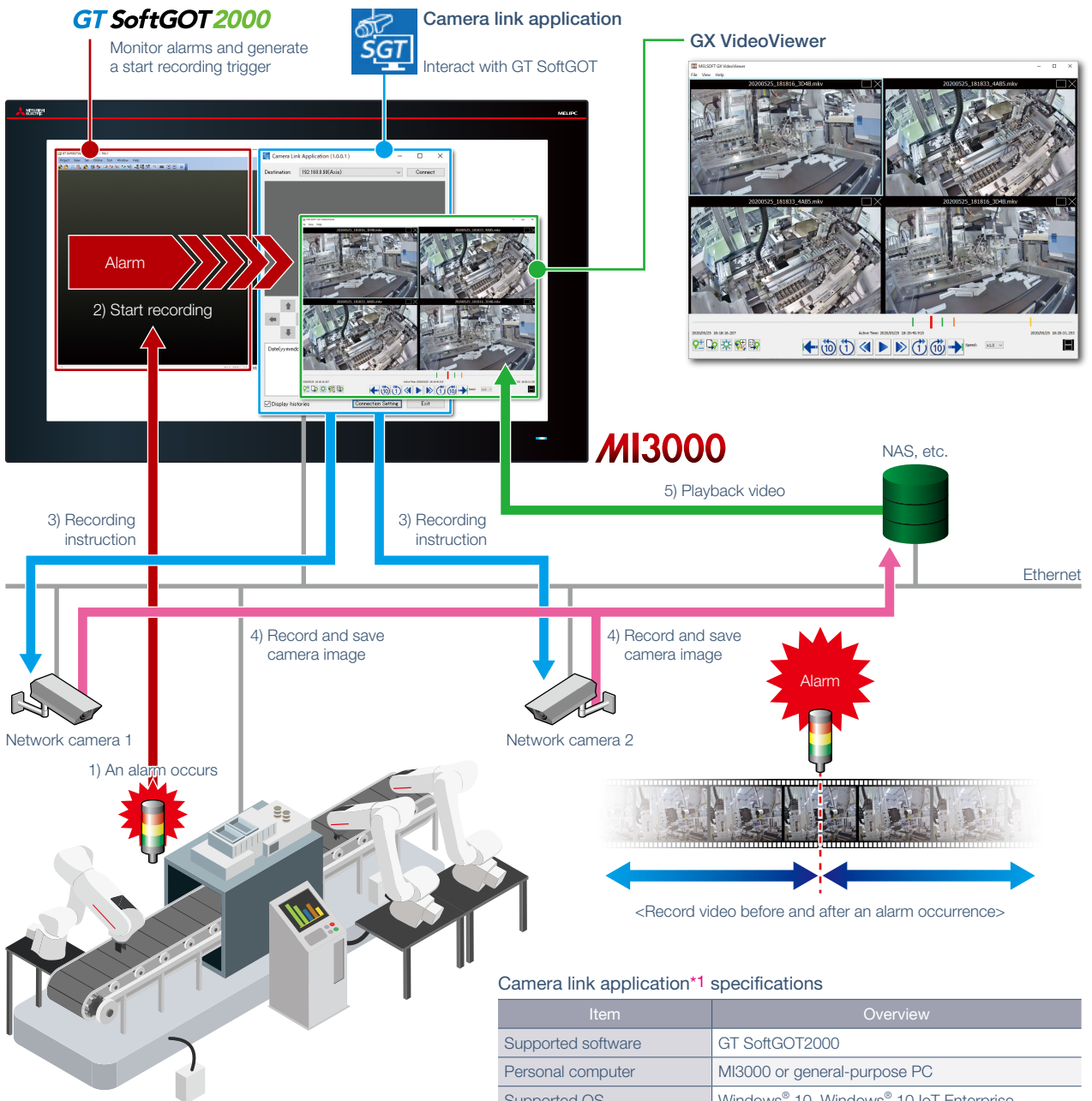


Start recording when an alarm occurs

◆ Camera link application*1 **NEW**

GT27 GT25 GT23 GT21 GS21 SoftGOT

Images from network cameras can be recorded before and after an alarm occurrence by using the alarm of an on-site equipment as a trigger. If multiple alarms occurred simultaneously, camera images of multiple alarms can be recorded all at once. Since the destination to record camera images can be set to a network storage such as a personal computer or NAS, the recorded files can be viewed at a time.



Camera link application*1 specifications

| Item | Overview |
|--------------------------|---|
| Supported software | GT SoftGOT2000 |
| Personal computer | MI3000 or general-purpose PC |
| Supported OS | Windows® 10, Windows® 10 IoT Enterprise |
| Supported network camera | Network camera manufactured by AXIS®*2 |
| Video playback tool | GX VideoViewer*1 |

*1 For the details of camera link application and GX VideoViewer, please contact your local sales office.

*2 Usable network cameras are the same as those for the camera recording package. For the details, please refer to the Technical Bulletin "Network cameras supporting the Camera recording package" (FA-A-0306).

Products used for GOT maintenance solutions/IP camera and video solutions

■ GOT2000 and option units

| Product name | Model | Description |
|------------------------|-------------|---|
| GOT (GT27, GT25, GT23) | | For the details, please refer to the Graphic Operation Terminal GOT2000 Series catalog (L(NA)08270ENG). |
| RGB input unit | GT27-R2 | For analog RGB input, 2 channels (simultaneous display) |
| Video/RGB input unit | GT27-V4R1-Z | For video input (NTSC/PAL), 4 channels/analog RGB, 1 channel input |
| Multimedia unit | GT27-MMR-Z | For video input (NTSC/PAL), 1 channel, recording video/playing video files |

■ Engineering software and licenses

| Product name | Model | Description |
|---|----------------|---|
| HMI/GOT Screen Design Software MELSOFT GT Works3 | SW1DND-GTWK3-E | English Version Standard license product*1 |
| License key for GT SoftGOT2000*2 | GT27-SGTKEY-U | USB port license key |
| GOT Mobile Function License*3 | GT25-WEBSKEY-1 | 1 license product*4 |
| Remote Personal Computer Operation Function (Ethernet) License*3 | GT25-PCRAKEY-1 | 1 license product*4 |

*1 Volume license product and additional license product are also available. For details, please contact your local sales office.

*2 License key for GT SoftGOT2000 is required for each personal computer that uses GT SoftGOT2000.
When using MELIPC MI3000, the license key is pre-installed so that it is not required to purchase separately.
The GT SoftGOT2000 software is included in GT Works3.

*3 Each GOT requires one license.

*4 Products with 5, 10, or 20 licenses are also available. For details, please contact your local sales office.

■ MELIPC

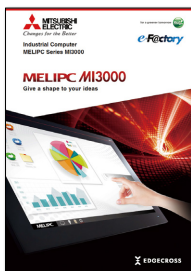
| Product name | Model | Screen size | Panel color | Description |
|---------------|-----------|---------------------------|-------------|--|
| MELIPC MI3000 | MI3321G-W | 21.5" widescreen, Full HD | Black | Edgecross Basic Software, SLMP Data Collector, GT SoftGOT2000 pre-installed*1 |
| | MI3315G-W | 15" XGA | Black | |

*1 A separate license key for GT SoftGOT2000 is not required.

Related materials



System Recorder
Catalog
L(NA)08736ENG



MELIPC Series
MI3000 Catalog
L(NA)08600ENG



GOT2000 Series/
GOT SIMPLE Series
Catalog
L(NA)08270ENG



GT SoftGOT2000
Solutions Catalog
L(NA)08606ENG



GOT Mobile Catalog
L(NA)08399ENG

The actual color may differ slightly from the pictures in this catalog.
The actual display may differ from what are shown on GOT screen images.

Precautions before use

This publication explains the typical features and functions of the products herein and does not provide restrictions or other information related to usage and module combinations. Before using the products, always read the product user manuals. Mitsubishi Electric will not be held liable for damage caused by factors found not to be the cause of Mitsubishi Electric; opportunity loss or lost profits caused by faults in Mitsubishi Electric products; damage, secondary damage, or accident compensation, whether foreseeable or not, caused by special factors; damage to products other than Mitsubishi Electric products; or any other duties.

⚠ For safe use

- To use the products given in this publication properly, always read the relevant manuals before beginning operation.
- The products have been manufactured as general-purpose parts for general industries, and are not designed or manufactured to be incorporated in a device or system used in purposes related to human life.
- Before using the products for special purposes such as nuclear power, electric power, aerospace, medicine or passenger-carrying vehicles, consult with Mitsubishi Electric.
- The products have been manufactured under strict quality control. However, when installing the products where major accidents or losses could occur if the products fail, install appropriate backup or fail-safe functions in the system.

Global Partner. Local Friend.

American Offices

| | | |
|--|---|--|
| USA Mitsubishi Electric Automation, Inc. 500 Corporate Woods Parkway, Vernon Hills, IL 60061, U.S.A. Tel: +1-847-478-2100 | Mexico Mitsubishi Electric Automation, Inc. Mexico Branch Boulevard Miguel de Cervantes Saavedra 301, Torre Norte Piso 5, Ampliacion Granada, Miguel Hidalgo, Ciudad de Mexico, Mexico, C.P.11520 Tel: +52-55-3067-7512 | Brazil Mitsubishi Electric do Brasil Comercio e Servicos Ltda. Avenida Adelino Cardana, 293, 21 andar, Bethaville, Barueri SP, Brazil Tel: +55-11-4689-3000 |
|--|---|--|

Asia-Pacific Offices

| | | |
|--|--|--|
| China Mitsubishi Electric Automation (China) Ltd. Mitsubishi Electric Automation Center, No.1386 Hongqiao Road, Shanghai, China Tel: +86-21-2322-3030 | Taiwan SETSUYO ENTERPRISE CO., LTD. 6F, No.105, Wugong 3rd Road, Wugu District, New Taipei City 24889, Taiwan Tel: +886-2-2299-2499 | Korea Mitsubishi Electric Automation Korea Co., Ltd. 7F to 9F, Gangseo Hangang Xi-tower A, 401, Yangcheon-ro, Gangseo-Gu, Seoul 07528, Korea Tel: +82-2-3660-9569 |
| Singapore Mitsubishi Electric Asia Pte. Ltd. 307 Alexandra Road, Mitsubishi Electric Building, Singapore 159943 Tel: +65-6473-2308 | Malaysia Mitsubishi Electric Sales Malaysia Sdn. Bhd. Lot 11, Jalan 219, 46100 Petaling Jaya, Selangor Darul Ehsan, Malaysia Tel: +60-3-7958-3544 | Indonesia PT. Mitsubishi Electric Indonesia Gedung Jaya 8th Floor, J.L. MH. Thamrin No.12, Jakarta Pusat 10340, Indonesia Tel: +62-21-3192-6461 |
| Vietnam Mitsubishi Electric Vietnam Co., Ltd. 11th & 12th Floor, Viettel Tower B, 285 Cach Mang Thang 8 Street, Ward 12, District 10, Ho Chi Minh City, Vietnam Tel: +84-28-3910-5945 | Thailand Mitsubishi Electric Factory Automation (Thailand) Co., Ltd. 101, True Digital Park Office, 5th Floor, Sukhumvit Road, Bangchak, Phra Khanong, Bangkok 10260, Thailand Tel: +66-2092-8600 | Philippines MELCO Factory Automation Philippines Inc. 128, Lopez-Rizal St. Brgy, Highway Hills, Mandaluyong City, MM, Philippines Tel: +63-(0)2-8256-8042 |
| India Mitsubishi Electric India Pvt. Ltd. Pune Branch Emerald House, EL-3, J Block, M.I.D.C., Bhosari, Pune - 411026, Maharashtra, India Tel: +91-20-2710-2000 | Australia Mitsubishi Electric Australia Pty. Ltd. 348 Victoria Road, P.O. Box 11, Rydalmere, N.S.W. 2116, Australia Tel: +61-2-9684-7777 | |

European Offices

| | | |
|--|--|--|
| Germany Mitsubishi Electric Europe B.V. German Branch Mitsubishi-Electric-Platz 1, 40882 Ratingen, Germany Tel: +49-2102-486-0 | UK Mitsubishi Electric Europe B.V. UK Branch Travellers Lane, UK-Hatfield, Hertfordshire, AL10 8XB, U.K. Tel: +44-1707-28-8780 | Italy Mitsubishi Electric Europe B.V. Italian Branch Centro Direzionale Colleoni - Palazzo Sirio, Viale Colleoni 7, 20864 Agrate Brianza (MB), Italy Tel: +39-039-60531 |
| Spain Mitsubishi Electric Europe B.V. Spanish Branch Carretera de Rubi 76-80-Apdo. 420, E-08190 Sant Cugat del Valles (Barcelona), Spain Tel: +34-935-65-3131 | France Mitsubishi Electric Europe B.V. French Branch 25, Boulevard des Bouvets, 92741 Nanterre Cedex, France Tel: +33-1-55-68-55-68 | Czech Republic Mitsubishi Electric Europe B.V. Czech Branch Pekarska 621/7, 155 00 Praha 5, Czech Republic Tel: +420-255-719-200 |
| Turkey Mitsubishi Electric Turkey A.S. Umranıye Branch Serifali Mahallesi Nutuk Sokak No:5, TR-34775 Umranıye / Istanbul, Turkey Tel: +90-216-526-3990 | Poland Mitsubishi Electric Europe B.V. Polish Branch ul. Krakowska 48, 32-083 Balice, Poland Tel: +48-12-347-65-00 | Russia Mitsubishi Electric (Russia) LLC St. Petersburg Branch Startovaya street, 8, BC "Aeroplaza", office 607; 196210, St. Petersburg, Russia Tel: +7-812-449-51-34 |
| South Africa Adroit Technologies 20 Waterford Office Park, 189 Witkoppen Road, Fourways, South Africa Tel: +27-11-658-8100 | | |

The release date varies depending on the product and your region. For details, please contact your local sales office.

MITSUBISHI ELECTRIC CORPORATION

HEAD OFFICE: TOKYO BLDG., 2-7-3, MARUNOUCHI, CHIYODA-KU, TOKYO 100-8310, JAPAN
 NAGOYA WORKS: 1-14, YADA-MINAMI 5, HIGASHI-KU, NAGOYA, JAPAN