



for a greener tomorrow

Mitsubishi Electric AC Servo System

Motion Module RD78GHW/RD78GHV

December 2019

High-performance type
RD78GH is newly released
RD78G is upgraded

New Product Release
SV1912-2E



CC-Link **IE TSN**
MELSEC iQ-R series

RD78GHV **NEW**
RD78GHW **NEW**

- Maximum number of control axes:
128 axes/module (RD78GHV)
256 axes/module (RD78GHW)
- ST language program capacity:
Built-in ROM max. 64 MB
+ SD memory card



CC-Link **IE TSN**
MELSEC iQ-R series

RD78G4/RD78G8/RD78G16
RD78G32/RD78G64

- Maximum number of control axes:
64 axes/module (RD78G64)
- ST language program capacity:
Built-in ROM max. 16 MB + SD memory card

Minimum operation cycle
31.25
μs

Max. number of control axes
256
axes



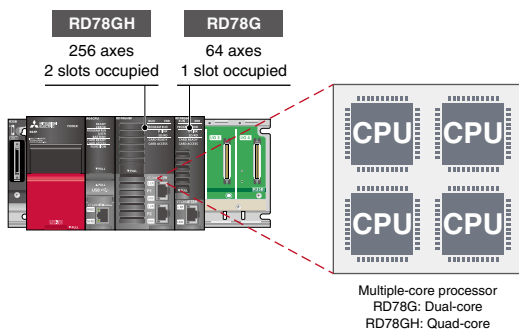
Minimum operation cycle
62.5
μs

Max. number of control axes
64
axes

Upgraded

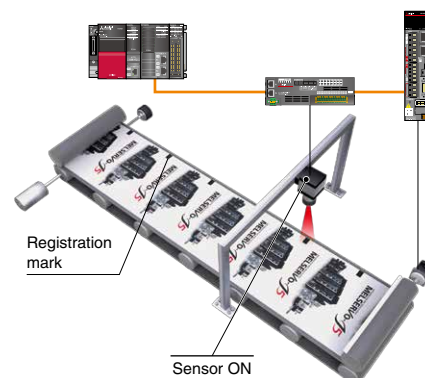
Motion Modules for High-Performance Operation

- Two types of Motion modules are available:
RD78G for positioning and synchronous control and RD78GH for higher-accuracy control.
- Control load distribution among PLC CPUs and Motion modules is possible: the PLC CPUs execute machine control, and the Motion modules execute motion control.



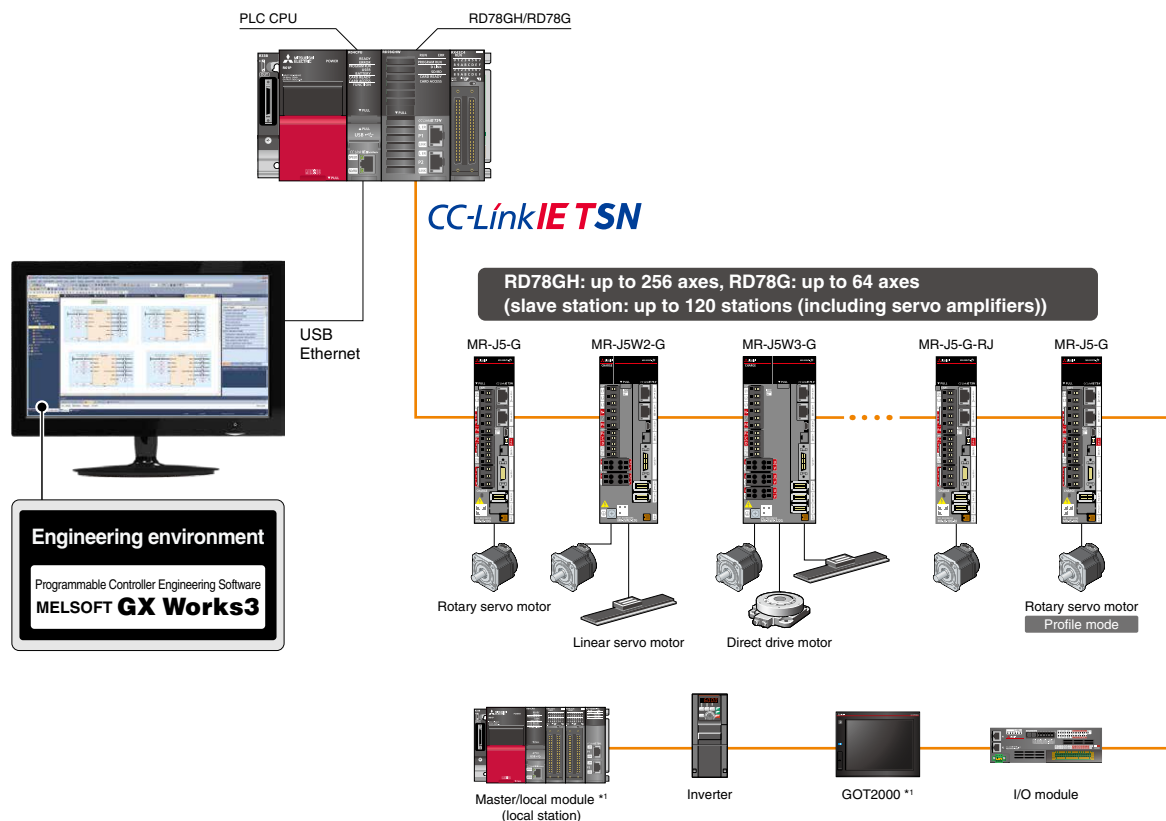
Touch Probe Function (Mark Detection Function) **NEW**

This function latches data responding to a trigger signal input. The trigger signal can be inputted to the controller using a remote I/O.



Mitsubishi Electric AC Servo System Motion Module RD78GHW/RD78GHV

■ System configuration



*1. Planned for a future support.

■ Specifications list

Item	RD78GHW	RD78GHV	RD78G64	RD78G32	RD78G16	RD78G8	RD78G4
Maximum number of control axes [axes]	256	128	64	32	16	8	4
Minimum operation cycle*1 [μs]	31.25		62.5				
Maximum number of connectable stations	120 stations						
Servo amplifier connection method	CC-Link IE TSN (Authentication class: B)						
Number of I/O points occupied	32 points + 16 points (empty slot)		32 points				
Number of slots occupied	2 slots		1 slot				
5 V DC internal current consumption [A]	2.33		1.93				
Mass [kg]	0.44		0.26				
Dimensions [mm]	106.0 (H) × 56.0 (W) × 110.0 (D)		106.0 (H) × 27.8 (W) × 110.0 (D)				

*1. The minimum operation cycle varies by the number of control axes and the models.

■ To use the RD78GH and the upgraded RD78G, the following versions of the firmware and the software are required.

To obtain the firmware/software update files, contact your local sales office.

- Motion module firmware: 05 or later
- PLC CPU module firmware
 - R00CPU/R01CPU/R02CPU: 14 or later
 - R04CPU/R08CPU/R16CPU/R32CPU/R120CPU: 46 or later
 - R□ENCPU: 46 or later (CPU part)
- GX Works3 Version1: 1.060N or later
- Motion control setting: 1.005F or later
- MR-J5-G servo amplifier firmware: A6 or later

MITSUBISHI ELECTRIC CORPORATION

HEAD OFFICE: TOKYO BUILDING, 2-7-3, MARUNOUCHI, CHIYODA-KU, TOKYO 100-8310, JAPAN
NAGOYA WORKS: 1-14, YADA-MINAMI 5, HIGASHI-KU, NAGOYA, JAPAN

TRADEMARKS

Company names and product names used in this document are trademarks or registered trademarks of their respective companies.

SAFETY WARNING

To ensure proper use of the products listed in this document, please be sure to read the instruction manual prior to use.