

MITSUBISHI ELECTRIC Inverter

Sales and Service

No. 621E

Appearance Change for the FR-A800, A800 Plus, and F800 Series General-Purpose Inverters and the FR-B, B3, and B4 Series Inverters for Pressure-Resistant Explosion-Proof Motors

Thank you for your continued patronage of Mitsubishi Electric drive control products. The appearance of the FR-A800, A800 Plus, and F800 series general-purpose inverters and the FR-B, B3, and B4 series inverters for pressure-resistant explosion-proof motors will be changed to improve the obtainability of parts.

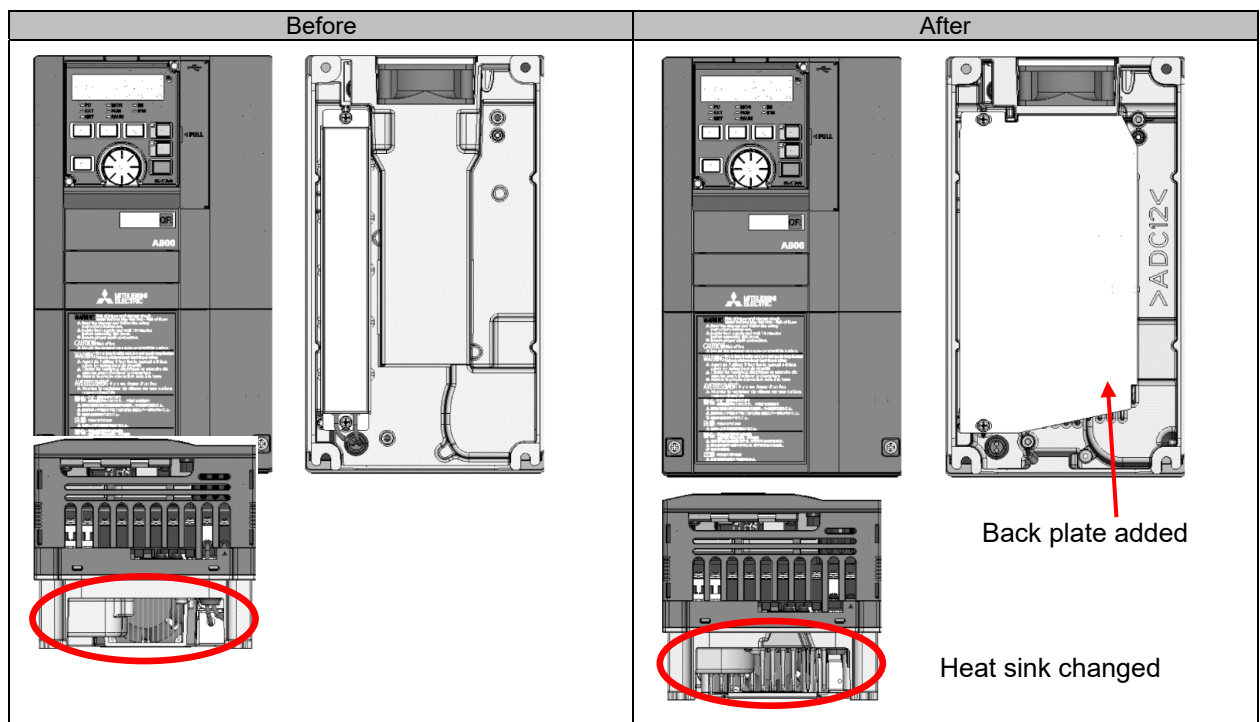
1. Products Affected

Series	200 V	400 V
FR-A800, A800 Plus	1.5K to 3.7K	2.2K/3.7K
FR-B, B3	1500 to 3700	2200/3700
FR-B4	1.5K to 3.7K	—
FR-F800	2.2K to 5.5K	3.7K/5.5K

2. Details of the Change

The changes do not affect the functions of the inverters.

(1) Appearance change



(2) Change of mass

The mass of each inverter will increase by about 0.2 kg.

Date of issue	March 2020	Title	Appearance Change for the FR-A800, A800 Plus, and F800 Series General-Purpose Inverters and the FR-B, B3, and B4 Series Inverters for Pressure-Resistant Explosion-Proof Motors	Mitsubishi Electric Corp., Nagoya Works 5-1-14 Yada-minami, Higashi-ku, Nagoya 461-8670 Tel.: +81 (52) 721-2111 Main line
----------------------	------------	--------------	---	---

3. Date of Change

The change will be sequentially applied to the products manufactured in April 2020 or later.
(The change may be applied in late March depending on the amount of the remaining inventory.)

4. Product Identification

The SERIAL (determined by date of production) can be checked on the product's rating plate.

□ 0 4 ○○○○○○
Symbol Year Month Control number

SERIAL

The SERIAL consists of one symbol, two characters indicating the production year and month, and six characters indicating the control number.

The last digit of the production year is indicated as the Year, and the Month is indicated by 1 to 9, X (October), Y (November), or Z (December).