

Change of Metal Earth Plate Shape for the FR-E820-5.5K/7.5K Inverters

Thank you for your continued patronage of Mitsubishi Electric drive control products.
 For the FR-E820-5.5K/7.5K inverters, the shape of the metal earth plate will be changed.

1. Products Affected

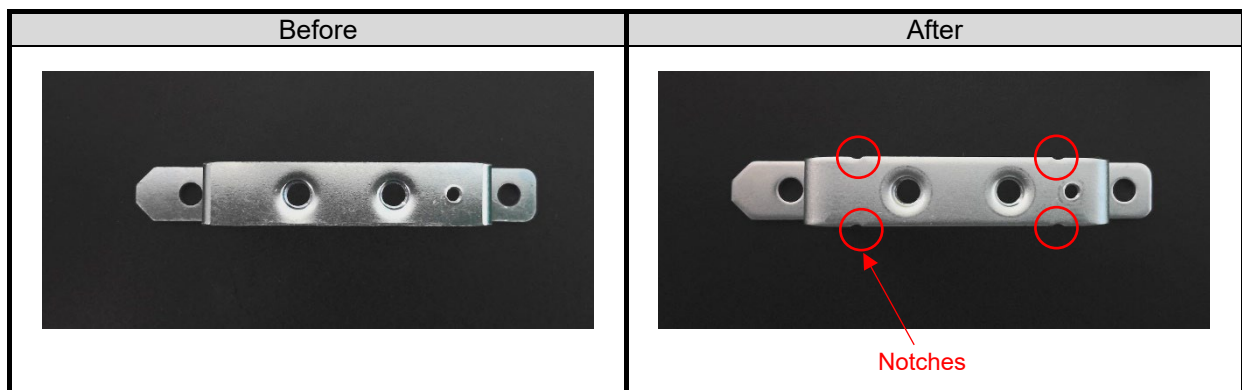
- FR-E820-5.5K
- FR-E820-7.5K

2. Details of Change

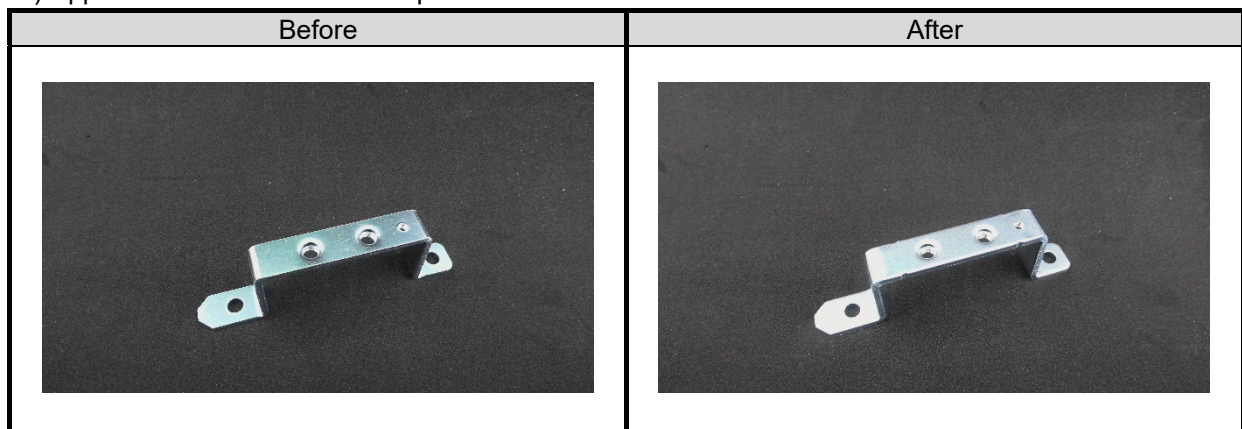
The shape of the metal earth plate of the products will be changed as follows.
 The change does not affect the quality, performance, or specifications of the products.

1) Change of the shape by notching

A progressive die will be used to produce the metal earth plate. Four notches used for positioning will be made on the plate as follows.

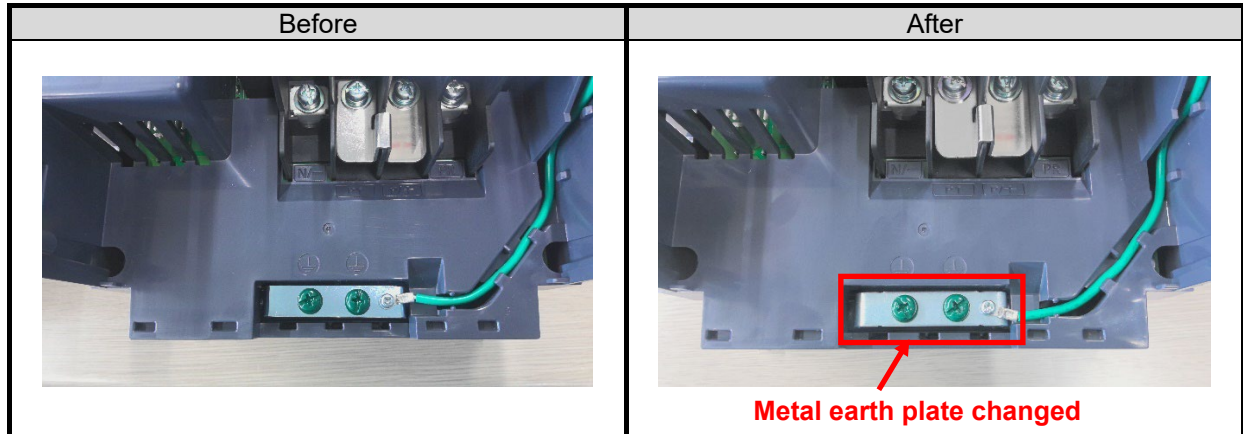


2) Appearance of the metal earth plate



Date of issue	April 2024	Title	Change of Metal Earth Plate Shape for the FR-E820-5.5K/7.5K Inverters	Mitsubishi Electric Corp., Nagoya Works 5-1-14 Yada-minami, Higashi-ku, Nagoya 461-8670 Tel.: +81 (52) 721-2111 Main line
----------------------	------------	--------------	---	---

3) Appearance when installed to the inverter



3. Date of Change

The change will be sequentially applied to products manufactured in May 2024 or later.

4. Product Identification

The SERIAL (determined by date of production) can be checked on the product's rating plate.

SERIAL example on rating plate
 □□ 24 5 ○○○○○○
Symbol Year Month Control number
 SERIAL

The SERIAL consists of two symbols, three characters indicating the production year and month, and six characters indicating the control number. The last two digits of the production year are indicated as the Year, and the Month is indicated by 1 to 9, X (October), Y (November), or Z (December).