

Sales and Service

Change of the Power Supply Connector Outer Appearance for AC Servo Motors

Thank you for your continued patronage of the Mitsubishi general-purpose AC servo and FA products. We will change the outer appearance of the power supply connector for AC servo motors. We ask for your understanding in this matter.

1. Target Models

HF-KN/KP/MP series and HG-KR/MR series

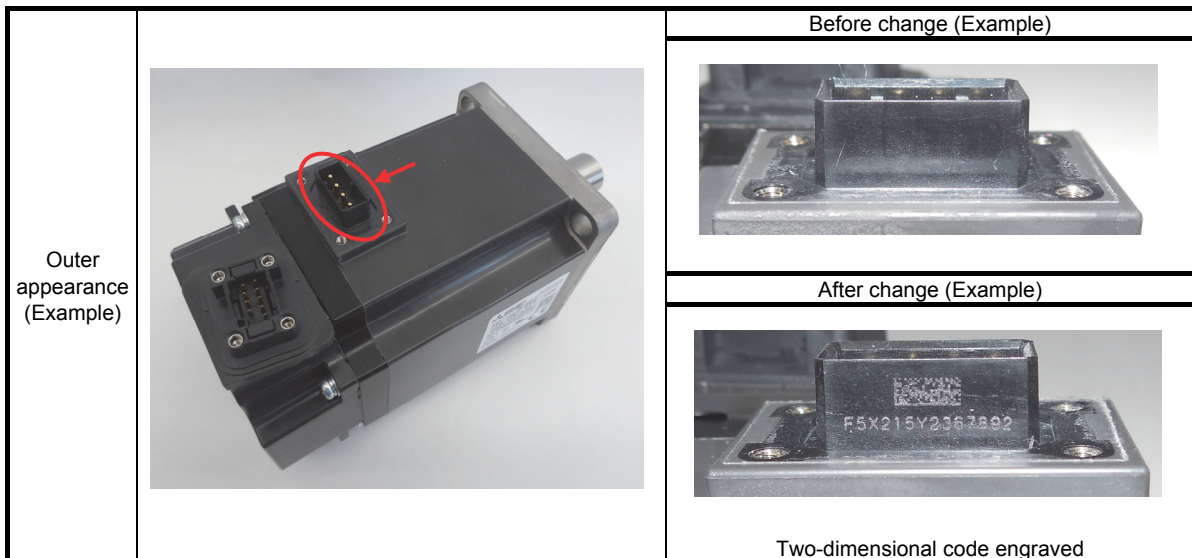
2. Purpose

To improve product control

3. Details of Change

The outer appearance of the power supply connector will be changed as follows.

Note. The engraved indications are an example, and the contents of indications may differ.



4. Schedule

This change will be made sequentially from the March 2015 production.

There may be cases when both new and old products exist in the distribution stage.

The above change does not affect the servo motor functions and performance.

Date of issue	January 2015	Title	Change of the Power Supply Connector Outer Appearance for AC Servo Motors	Mitsubishi Electric Corp., Nagoya Works 5-1-14 Yada-minami, Higashi-ku, Nagoya 461-8670 Tel.: +81 (52) 721-2111 Main line
----------------------	--------------	--------------	---	---