

AC Servo Sales and Service

Appearance Change of Geared AC Servo Motors

Thank you for your continued patronage of the Mitsubishi Electric general-purpose AC servo. For the following geared AC servo motors, the appearance of the gear reducer has been changed to improve the obtainability of the parts. We ask for your understanding in this matter. This change does not affect the functions and performance of the products.

1. Target Model

- (1) HG-KR series: HG-KR_G1_ (except for the models which had already changed)
- (2) HF-KP series: HF-KP_G1_
- (3) HF-MP series: HF-MP_G1_

2. Details of the Change

To improve the obtainability of the parts, the appearance of the gear reducer has been changed as follows. (Photo 1)

Photo 1 shows one example of the change, and the appearance varies depending on the models. The dimensions of the gear reducer have not been changed.

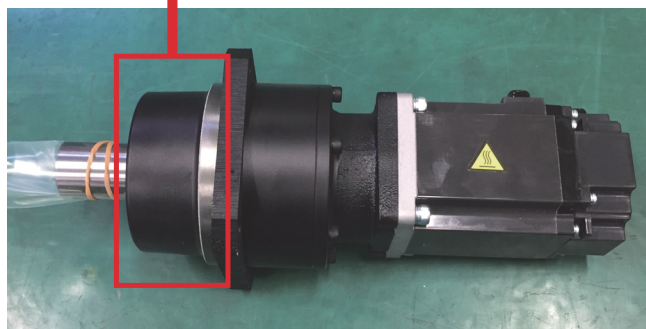
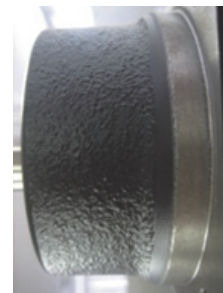
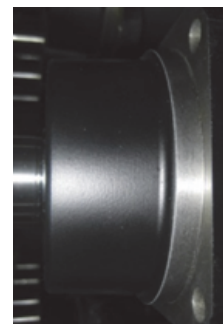


Photo 1. Appearance of a geared AC servo motor



Before change



After change

3. Schedule

This change has been made sequentially from the April 2017 production.

There may be cases where both the former and new products exist in the distribution stage.

Date of issue	January 2017 (Revision: May 2017)	Title	Appearance Change of Geared AC Servo Motors	Mitsubishi Electric Corp., Nagoya Works 1-14, Yada-minami 5-chome, Higashi-ku, Nagoya 461-8670 Tel.: +81 (52) 721-2111 Main line
----------------------	---	--------------	--	--

Revision

Version	Date of issue	Revision
A	May 2017	Photo 1 (Appearance of a geared AC servo motor) is changed.