

AC Servo Sales and Service

Change in the Bottom Surface of General-Purpose AC Servo Amplifier

Thank you for your continued patronage of the Mitsubishi Electric general-purpose AC servo. The bottom surface of servo amplifiers will be changed as follows.

1. Target Model

MR-J4-10A/B(-RJ), MR-J4-20A/B(-RJ), MR-J4-10A1/B1, MR-J4-20A1/B1
 MR-J3-10A/B/BS/T, MR-J3-20A/B/BS/T, MR-J3-10A1/B1/BS1/T1, MR-J3-20A1/B1/BS1/T1

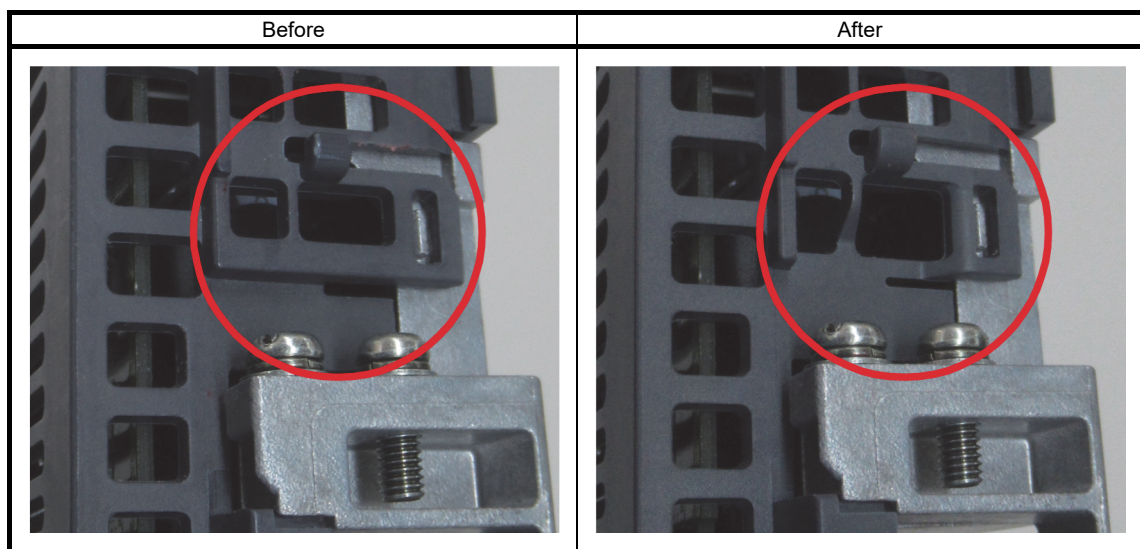
2. Reason for the Change

To provide larger space around the protective earth (PE) terminal for easier connection.

3. Details of the Change

The bottom surface of servo amplifiers will be changed to provide larger space around the terminal.

Table 1. Bottom surface of servo amplifier (The area circled in red shows the difference.)



4. Schedule

This change will be made sequentially from the October 2018 production.

Note that, depending on the stock status, both the former and new products may be distributed in the market around the same time.

Date of issue September 2018	Title Change in the Bottom Surface of General-Purpose AC Servo Amplifier	Mitsubishi Electric Corp., Nagoya Works 1-14, Yada-minami 5-chome, Higashi-ku, Nagoya 461-8670 Tel.: +81 (52) 721-2111 Main line
--	--	--