

Sales and Service

Precautions of the Operation to Read a Buffer Memory and Monitoring a Buffer Memory of the Motion Modules (Q172LX/Q172EX(-S1, -S2, -S3)/Q173PX(-S1))

Thank you for your continued patronage of the Mitsubishi motion controllers and FA products. We inform you of the precaution of the operation to read a buffer memory and monitoring a buffer memory of the motion modules used in the servo system as indicated below. Please check the following contents and, we ask for understanding in this matter.

1. Target Models

Motion Modules
 Q172LX, Q172EX(-S1, -S2, -S3), Q173PX(-S1)
 Note. Q172DLX, Q172DEX and Q173DPX are not applicable.

2. Precautions of the Operation to Read a Buffer Memory

The motion modules indicated above are designed as the exclusive modules for the motion CPU control. Therefore, we cannot guarantee the operation by access from other modules including a programmable controller CPU. In case an operation to read a buffer memory with GX Works, GX Developer, and others is performed by mistake, the error code : 1414 CONTROL – BUS. ERR. occurs in the motion side and the error code : 7000 MULTI CPU DOWN occurs in the programmable controller side. If the buffer memory is selected in the detail setting of the device data (Fig.1.) for the operation to read the buffer memory, be careful not to select the motion modules.

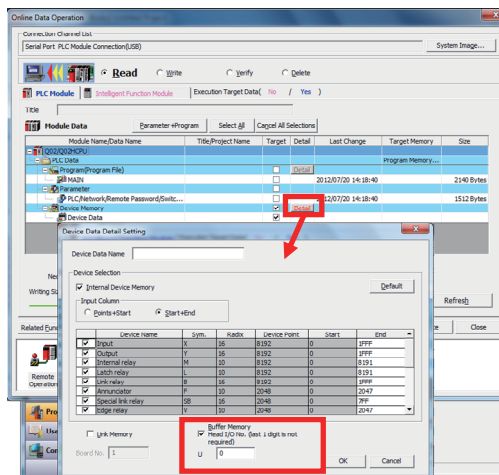


Fig.1. Setting Screen for Reading in GX Works

3. Precautions of Monitoring a Buffer Memory

If a buffer memory of a motion module is monitored with GX Works, GX Developer and others, the same error as the operation to read the buffer memory indicated above occurs. Also, be careful when an address is specified if a buffer memory is monitored, and do not monitor a buffer memory of a motion module.

Date of issue	November 2012	Title	Precautions of the Operation to Read a Buffer Memory and Monitoring a Buffer Memory of the Motion Modules (Q172LX/Q172EX(-S1, -S2, -S3)/Q173PX(-S1))	Mitsubishi Electric Corp., Nagoya Works 5-1-14 Yada-minami, Higashi-ku, Nagoya 461-8670 Tel.: +81 (52) 721-2111 Main line
----------------------	---------------	--------------	------------------------------------------------------------------------------------------------------------------------------------------------------	---------------------------------------------------------------------------------------------------------------------------------