

TECHNICAL BULLETIN

[Issue No.] GOT-A-0043

[Page] 2/11

[Title] Precautions when Replacing GT15 Models with GT16 Models

[Date of Issue] Ver. *: May 2011

[Relevant Models] GOT1000 Series

1. Requests for customers

We released GT16 models with high functions and performance as alternative of GT15 models in August 2008. We highly recommend that you replace GT15 models with GT16 models for using new sophisticated features. For the replacement models, refer to "Table 2-1 Recommended replacement GT16 models and precautions for replacement" in Chapter 2 below.

2. Selection of GOT

The following table lists the recommended replacement GT16 models and the precautions for replacement. For the details, refer to the precautions in each chapter.

When you use a replacement GT16 model, according to the model and its functions, the required drawing software and the version of the software differ. For the details, refer to the catalogs, the user's manuals, or the MELFANSweb website, and prepare the appropriate drawing software.

Table 2-1 Recommended replacement GT16 models and precautions for replacement

| GT15 models in use | | Recommended GT16 models for replacement | | Panel cut compatibility ○ : Compatible □ : Not compatible | Applicable software version | | | | | |
|--------------------|--------------|---|---|---|-----------------------------|-------------------|-------------------|---|-------------------|-------------------|
| | | | | | GT Works3 | GT Designer2 | | | | |
| GT1595 | GT1595-XTBA | GT1695 | GT1695M-XTBA | ○ | Ver1.01B or later | Ver2.90U or later | | | | |
| | GT1595-XTBD | | GT1695M-XTBD | ○ | | | | | | |
| GT1585 | GT1585V-STBA | GT1685 | GT1685M-STBA (*1) | ○ | | | | | | |
| | GT1585V-STBD | | GT1685M-STBD (*1) | ○ | | | | | | |
| | GT1585-STBA | | GT1685M-STBA (*1) | ○ | | | | | | |
| | GT1585-STBD | | GT1685M-STBD (*1) | ○ | | | | | | |
| GT157□ | GT1575V-STBA | GT167□ | GT1675M-STBA (*1) | ○ | Ver1.01B or later | Ver2.96A or later | | | | |
| | GT1575V-STBD | | GT1675M-STBD (*1) | ○ | | | | | | |
| | GT1575-STBA | | GT1675M-STBA (*1) | ○ | | | | | | |
| | GT1575-STBD | | GT1675M-STBD (*1) | ○ | | | | | | |
| | GT1575-VTBA | | GT1675M-VTBA (*1) | ○ | | | | | | |
| | GT1575-VTBD | | GT1675M-VTBD (*1) | ○ | | | | | | |
| | GT1575-VNBA | | GT1675-VNBA (*1) | ○ | Ver1.17T or later | Not supported | | | | |
| | GT1575-VNBD | | GT1675-VNBD (*1) | ○ | | | | | | |
| | GT1572-VNBA | | GT1672-VNBA (*1) | ○ | | | | | | |
| | GT1572-VNBD | | GT1672-VNBD (*1) | ○ | | | | | | |
| | GT156□ | | GT1565-VTBA | GT166□ | | | GT1665M-VTBA (*1) | ○ | Ver1.01B or later | Ver2.96A or later |
| | | | GT1565-VTBD | | | | GT1665M-VTBD (*1) | ○ | | |
| GT1562-VNBA | | GT1662-VNBA (*1) | ○ | | Ver1.17T or later | Not supported | | | | |
| GT1562-VNBD | | GT1662-VNBD (*1) | ○ | | | | | | | |
| GT155□ | GT1555-VTBD | GT165□ | GT1655-VTBD (*1) | ○ | Ver1.28E or later | | | | | |
| | GT1555-QTBD | | No replacement GT16 models. Use the GT1555-Q□BD continuously. | | | | | | | |
| | GT1555-QSBD | | | | | | | | | |
| | GT1550-QLBD | | | | | | | | | |

*1: Since the touch panel type is the analog resistive film, only one point can be touched. When the simultaneous 2-point press is required, use the GT15 model continuously.

For the precautions for replacement, refer to each chapter as shown below.

- Monitor screen data: Chapter 3
- Communication units and options: Chapter 4
- Cables: Chapter 5
- Mounting intervals: Chapter 6

TECHNICAL BULLETIN

[Issue No.] GOT-A-0043

[Page] 3/11

[Title] Precautions when Replacing GT15 Models with GT16 Models

[Date of Issue] Ver. *: May 2011

[Relevant Models] GOT1000 Series

3. Monitor screen data

The monitor screen data used with the GT15 model can also be used with the GT16 model by converting the GOT type on the applicable drawing software.

3.1 Changing the controller setting (Ethernet connection only)

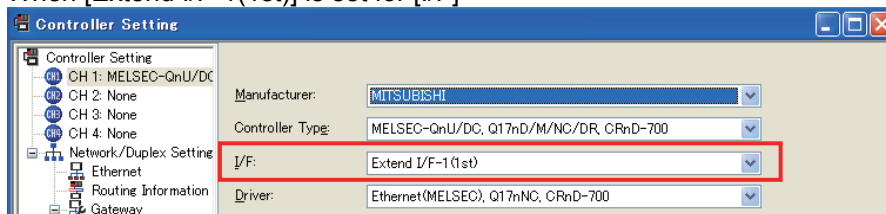
When the GT15 model is connected via Ethernet, change the controller setting for the GT16 model.

In the Ethernet setting, though the extension interface is specified for the GT15 model, specify the standard interface for the GT16 model.

3.1.1 How to change the controller setting when using GT Works3 Version1

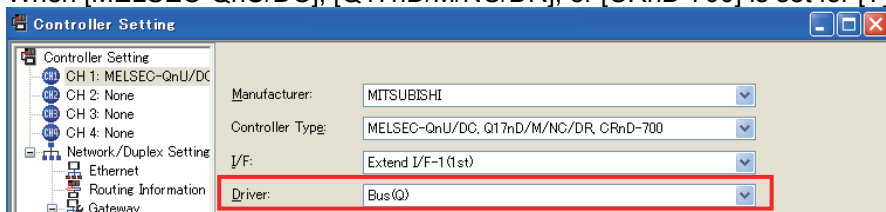
- 1) When the GT15 model is connected via Ethernet, the extension interface (among options ranging from [Extend I/F-1(1st)] to [Extend I/F-2(3rd)]) is set for [I/F].

When [Extend I/F-1(1st)] is set for [I/F]

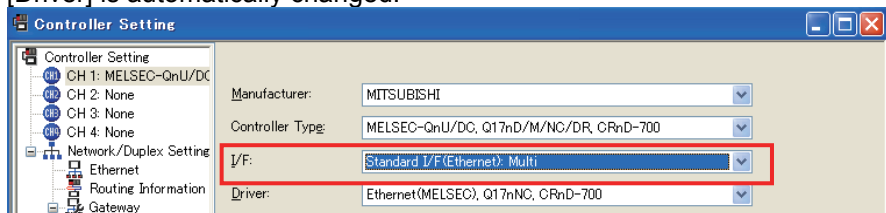


- 2) When the GOT type is changed from the GT15 model to the GT16 model, [I/F] is not changed and [Driver] is changed to [Bus(Q)], [Bus(A/QnA)], or [MELSEC-FX] according to [Type].

When [MELSEC-QnU/DC], [Q17nD/M/NC/DR], or [CRnD-700] is set for [Type]



- 3) In the controller setting, set [I/F] to [Standard I/F(Ethernet): Multi]. [Driver] is automatically changed.



TECHNICAL BULLETIN

[Issue No.] GOT-A-0043

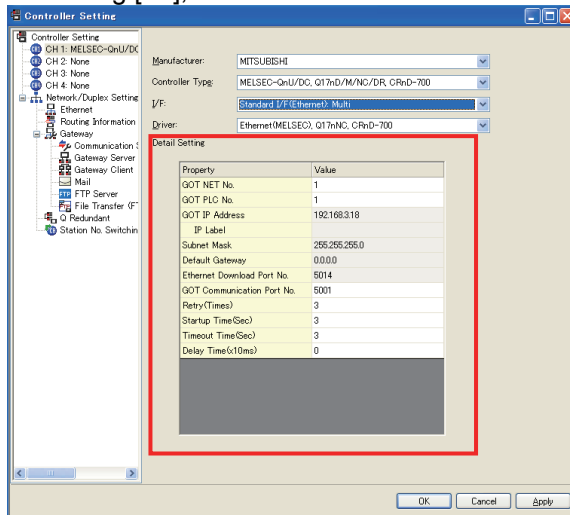
[Page] 4/11

[Title] Precautions when Replacing GT15 Models with GT16 Models

[Date of Issue] Ver. *: May 2011

[Relevant Models] GOT1000 Series

4) After setting [I/F], set the IP address and others in [Detail Setting].

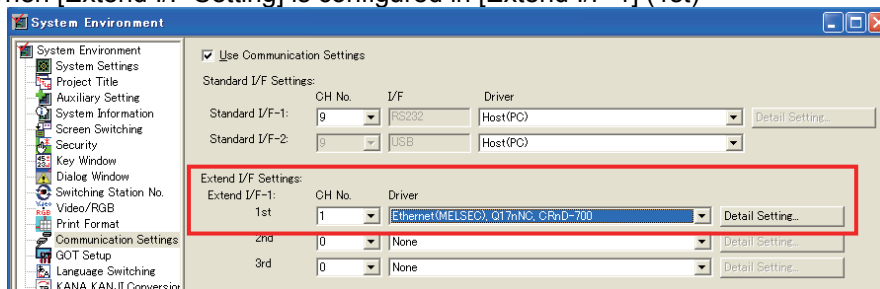


By changing the Ethernet interface from the extension interface to the standard interface, the configuration of the extension units may require changes. Therefore, change the controller setting overall.

3.1.2 How to change the controller setting when using GT Designer2 Version2

1) When the GT15 model is connected via Ethernet, [Extend I/F Setting] is configured with one ranging from [Extend I/F-1] (1st) to [Extend I/F-2] (3rd).

When [Extend I/F Setting] is configured in [Extend I/F-1] (1st)



TECHNICAL BULLETIN

[Issue No.] GOT-A-0043

[Page] 5/11

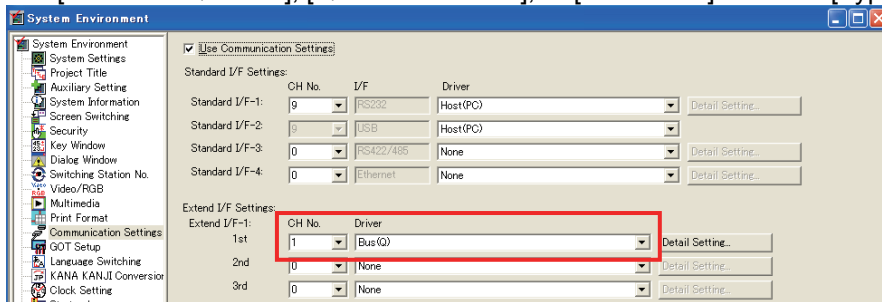
[Title] Precautions when Replacing GT15 Models with GT16 Models

[Date of Issue] Ver. *: May 2011

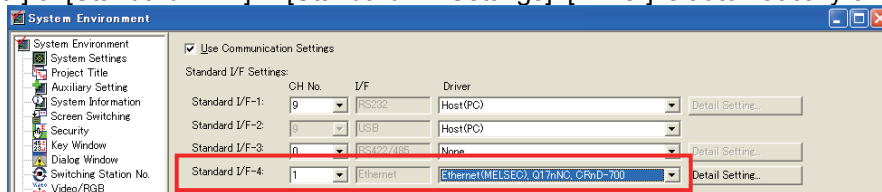
[Relevant Models] GOT1000 Series

- 2) When the GOT type is changed from the GT15 model to the GT16 model, [Driver] for [Extend I/F Setting] in [Communication Settings] is changed to [Bus(Q)], [Bus(A/QnA)], or [MELSEC-FX] according to [Controller Type] in [System Settings].

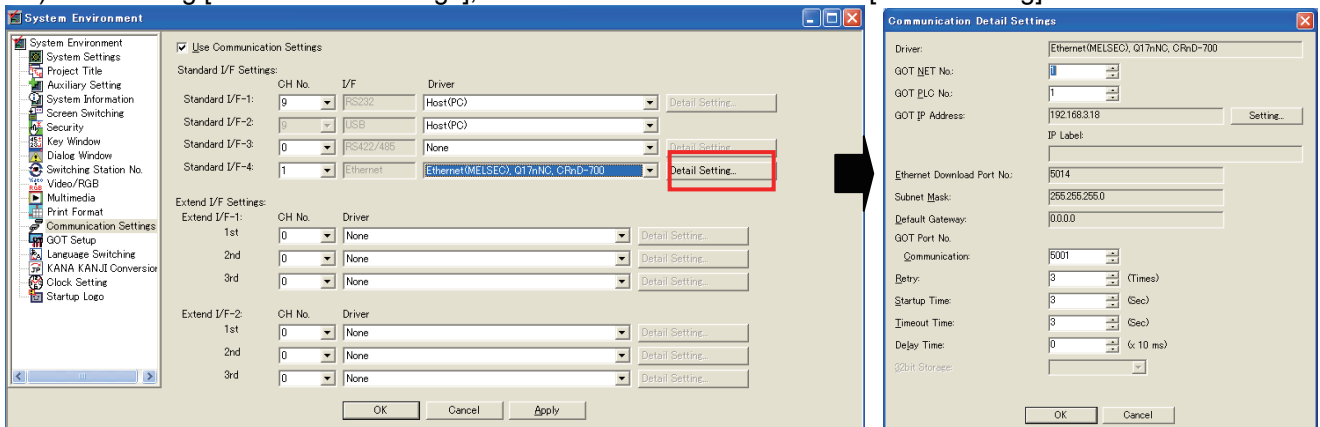
When [MELSEC-QnU/DC], [Q17nD/M/NC/DR], or [CRnD-700] is set for [Type]



- 3) In [Communication Settings], set 0 for [CH No.] of [Extend I/F-1] (1st) in [Extend I/F Setting] and set 4 for [CH No.] of [Standard I/F-4] in [Standard I/F Settings]. [Driver] is automatically changed.



- 4) After setting [Standard I/F Settings], set the IP address and others in [Detail Setting].



By changing the Ethernet interface from the extension interface to the standard interface, the configuration of the extension units may require changes. Therefore, change the controller setting overall.

TECHNICAL BULLETIN

[Issue No.] GOT-A-0043

[Page] 6/11

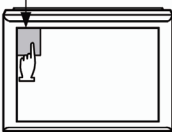
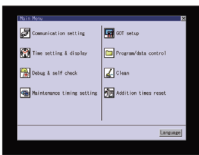
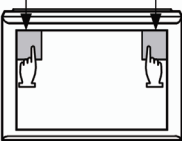

[Title] Precautions when Replacing GT15 Models with GT16 Models

[Date of Issue] Ver. *: May 2011

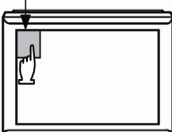
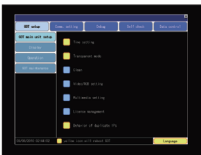
[Relevant Models] GOT1000 Series

3.2 Changing the utility call key setting

While a user-created screen is displayed, touching a utility call key displays the main menu. The utility call keys for the GT15 models (excluding GT1595) are located at upper-left and upper-right corners on the GOT screen for simultaneous 2-point press. The utility call key for the GT16 model is located at upper-left corner on the GOT screen for only 1-point press. The positions of the utility call keys can be changed with the GOT utility, GT Designer3, or GT Designer2. The following table shows the factory default position of the utility call keys for the GT15 models.

| Model | Utility call key (Factory default) |
|--------------------------------------|--|
| GT1595 | <p>Only 1-point press on the GOT screen upper-left corner</p> <div style="display: flex; align-items: center; justify-content: center;"> <div style="text-align: center;"> <p>Utility call key One-point press on the upper-left corner</p>  </div> <div style="margin: 0 20px;">→</div> <div style="text-align: center;"> <p>Main menu</p>  </div> </div> |
| GT1585 GT157□ GT156□ GT155□ | <p>Simultaneous 2-point press on the GOT screen upper-left and upper-right corners</p> <div style="display: flex; align-items: center; justify-content: center;"> <div style="text-align: center;"> <p>Utility call key Simultaneous 2-point press</p>  </div> <div style="margin: 0 20px;">→</div> <div style="text-align: center;"> <p>Main menu</p>  </div> </div> |

The following table shows the factory default position of the utility call key for the GT16 models.

| Model | Utility call key (Factory default) |
|-------|---|
| GT16 | <p>Only 1-point press on the GOT screen upper-left corner</p> <div style="display: flex; align-items: center; justify-content: center;"> <div style="text-align: center;"> <p>Utility call key One-point press on the upper-left corner</p>  </div> <div style="margin: 0 20px;">→</div> <div style="text-align: center;"> <p>Main menu</p>  </div> </div> |

TECHNICAL BULLETIN

[Issue No.] GOT-A-0043

[Page] 7/11

[Title] Precautions when Replacing GT15 Models with GT16 Models

[Date of Issue] Ver. *: May 2011

[Relevant Models] GOT1000 Series

4. Communication units and options

When checking whether the communication units and the options for the GT15 models can be used for the GT16 main unit, refer to the following.

Table 4 Replacement models for communication units and options

| Communication format/option | Unit model for GT15 models | Unit model for GT16 models | Remarks |
|-------------------------------|----------------------------|---|---|
| Q bus connection | GT15-QBUS | Same as on the left | |
| | GT15-QBUS2 | Same as on the left | |
| | GT15-75QBUSL | Same as on the left | Slim model (*1) |
| | GT15-75QBUS2L | Same as on the left | Slim model (*1) |
| A bus connection | GT15-ABUS | Same as on the left | |
| | GT15-ABUS2 | Same as on the left | |
| | GT15-75ABUSL | Same as on the left | Slim model (*1) |
| | GT15-75ABUS2L | Same as on the left | Slim model (*1) |
| RS-232 connection | GT15-RS2-9P | Same as on the left | |
| | GOT built-in interface | Same as on the left | |
| RS-422 connection | | Same as on the left | |
| | GT15-RS4-9P | GOT built-in RS-422/485 interface | The conversion cable (GT16-C02R4-9S) is required. |
| | GT15-RS4-TE | Same as on the left | |
| | GT15-RS2T4-9P | Same as on the left (*2) GOT built-in RS-422/485 interface | The conversion cable (GT16-C02R4-9S) is required. |
| | GT15-RS2T4-25P | Same as on the left (*2) GOT built-in RS-422/485 interface | The conversion cable (GT16-C02R4-25S) is required. |
| MELSECNET/H connection | GT15-J71LP23-25 | Same as on the left | |
| | GT15-J71BR13 | Same as on the left | |
| MELSECNET/10 connection | GT15-J71LP23-25 | Same as on the left | Use the MELSECNET/H communication unit in the MELSECNET/10 mode. |
| | GT15-75J71LP23-Z | GT15-J71LP23-25 | |
| | GT15-J71BR13 | Same as on the left | |
| | GT15-75J71BR13-Z | GT15-J71BR13 | |
| MELSECNET/B connection | GT15-J71LP23-25 | Same as on the left | |
| | GT15-J71BR13 | Same as on the left | |
| CC-Link Controller connection | GT15-J71GP23-SX | Same as on the left | |
| CC-Link connection | GT15-J61BT13 | Same as on the left | |
| | GT15-75J61BR13-Z | GT15-J61BT13 | Use the unit dedicated to the CC-Link ver.2 network system in the mode for the CC-Link ver.1 network system mode. |
| Ethernet connection | GT15-J71E71-100 | GOT built-in Ethernet interface | The Ethernet communication unit cannot be mounted on the GT16 main unit. |
| Serial Multi drop connection | GT01-RS4-M | Same as on the left | |
| Printer interface | GT15-PRN | Same as on the left | PictBridge compatible printer (*4) |
| | GT15-RS2-9P | Same as on the left | Serial printer (*4) |
| | GOT built-in interface | Same as on the left (*3) | |
| Video/RGB connection | GT15V-75V4 | GT16M-V4 | Since the GT15 unit is not compatible with the GT16 main unit, the unit cannot be used. |
| | GT15V-75R1 | GT16M-R2 | |
| | GT15V-75V4R1 | GT16M-V4R1 | |
| | GT15V-75ROUT | GT16M-ROUT | |

TECHNICAL BULLETIN

[Issue No.] GOT-A-0043

[Page] 8/11

[Title] Precautions when Replacing GT15 Models with GT16 Models

[Date of Issue] Ver. *: May 2011

[Relevant Models] GOT1000 Series

Table 4-1 Replacement models for communication units and options (From the previous page)

| Communication format/option | Unit model for GT15 models | Unit model for GT16 models | Remarks |
|-----------------------------|----------------------------|--|---|
| CF card unit | GT15-CFCD | Same as on the left | |
| CF card extended unit | GT15-CFEX-C08SET | Same as on the left | |
| Sound out unit | GT15-SOUT | Same as on the left | |
| External I/O unit | GT15-DIOR | Same as on the left | |
| | GT15-DIO | Same as on the left | |
| Back light | GT15-90XLTT | GT16-90XLTT | Since the GT15 backlight is not compatible with the GT16 main unit, the backlight cannot be used. |
| | GT15-80SLTT | GT16-80SLTT | |
| | GT15-70SLTT | GT16-70SLTT | |
| | GT15-70VLTN | GT16-70VLTN | |
| | GT15-60VLTT | GT16-60VLTT | |
| Option function board | GT15-FNB | Not required. The GT16 has the built-in option function board as standard equipment. | |
| | GT15-QFNB | Not required. The GT16 has the built-in option function board as standard equipment. | |
| | GT15-QFNB16M | Not required. The GT16 has the built-in option function board as standard equipment. | |
| | GT15-QFNB32M | Not required. The GT16 has the built-in option function board as standard equipment. | |
| | GT15-QFNB48M | Not required. The GT16 has the built-in option function board as standard equipment. | |
| | GT15-MESB48M | GT16-MESB | Since the GT15 option function board is not compatible with the GT16 main unit, the board cannot be used. |
| Protective sheet | GT15-90PSCB | GT16-90PSCB | Since the GT15 protective sheet is not compatible with the GT16 main unit, the sheet cannot be used. |
| | GT15-90PSGB | GT16-90PSGB | |
| | GT15-90PSCW | GT16-90PSCW | |
| | GT15-90PSGW | GT16-90PSGW | |
| | GT15-80PSCB | GT16-80PSCB | |
| | GT15-80PSGB | GT16-80PSGB | |
| | GT15-80PSCW | GT16-80PSCW | |
| | GT15-80PSGW | GT16-80PSGW | |
| | GT15-70PSCB | GT16-70PSCB | |
| | GT15-70PSGB | GT16-70PSGB | |
| | GT15-70PSCW | GT16-70PSCW | |
| | GT15-70PSGW | GT16-70PSGW | |
| | GT15-60PSCB | GT16-60PSCB | |
| | GT15-60PSGB | GT16-60PSGB | |
| | GT15-60PSCW | GT16-60PSCW | |
| | GT15-60PSGW | GT16-60PSGW | |
| Protective sheet | GT15-50PSCB | GT16-50PSCB | Since the GT15 protective sheet is not compatible with the GT16 main unit, the sheet cannot be used. |
| | GT15-50PSGB | GT16-50PSGB | |
| | GT15-50PSCW | GT16-50PSCW | |
| | GT15-50PSGW | GT16-50PSGW | |

TECHNICAL BULLETIN

[Issue No.] GOT-A-0043

[Page] 9/11

[Title] Precautions when Replacing GT15 Models with GT16 Models

[Date of Issue] Ver. *: May 2011

[Relevant Models] GOT1000 Series

Table 4-1 Replacement models for communication units and options (From the previous page)

| Communication format/option | Unit model for GT15 models | Unit model for GT16 models | Remarks |
|------------------------------------|----------------------------|----------------------------|--|
| USB environmental protection cover | GT15-UCOV | GT16-UCOV | Except the GT1655 Since the GT15 environmental protection cover is not compatible with the GT16 main unit, the cover cannot be used. |
| | GT11-50UCOV | GT16-50UCOV | GT1655 only Since the GT15 environmental protection cover is not compatible with the GT16 main unit, the cover cannot be used. |
| Protective cover for oil | GT05-90PCO | Same as on the left | |
| | GT05-80PCO | Same as on the left | |
| | GT05-70PCO | Same as on the left | |
| | GT05-60PCO | Same as on the left | |
| | GT05-50PCO | GT16-50PCO | Since the GT15 protective cover for oil is not compatible with the GT16 main unit, the cover cannot be used. |
| Stand | GT15-90STAND | Same as on the left | |
| | GT15-80STAND | Same as on the left | |
| | GT15-70STAND | Same as on the left | |
| | GT05-50STAND | Same as on the left | |
| CF card | GT05-MEM-16MC | Same as on the left | Applicable to the GT16. When storing the project data in the CF card, and using the data in the CF card, change the GOT type setting. |
| | GT05-MEM-32MC | Same as on the left | |
| | GT05-MEM-64MC | Same as on the left | |
| | GT05-MEM-128MC | Same as on the left | |
| | GT05-MEM-256MC | Same as on the left | |
| | GT05-MEM-512MC | Same as on the left | |
| | GT05-MEM-1GC | Same as on the left | |
| | GT05-MEM-2GC | Same as on the left | |
| | — | GT05-MEM-4GC (*5) | Select the CF card when 2GB or more is required. |
| — | GT05-MEM-8GC (*5) | | |
| — | GT05-MEM-16GC (*5) | | |
| Memory adaptor card | GT05-MEM-ADPC | Same as on the left | |
| Attachment | GT15-70ATT-98 | Same as on the left | |
| | GT15-70ATT-87 | Same as on the left | |
| | GT15-60ATT-97 | Same as on the left | |
| | GT15-60ATT-96 | Same as on the left | |
| | GT15-60ATT-87 | Same as on the left | |
| | GT15-60ATT-77 | Same as on the left | |
| | GT15-50ATT-95W | Same as on the left | |
| GT15-50ATT-85 | Same as on the left | | |
| Battery | GT15-BAT | Same as on the left | Except the GT1655 The GT16 has the built-in battery as standard equipment. |
| | | GT11-50BAT | GT1655 only Since the GT15 battery is not compatible with the GT16 main unit, the battery cannot be used. |

*1 The slim model has limitation for combination with other units. To use the slim model with the units for the functions, including the external I/O function, the sound output function, the printer function, and the video/RGB I/O function, use the following units.

GT15-ABUS (A bus connection 1ch), GT15-ABUS2 (A bus connection 2ch),
GT15-QBUS (Q bus connection 1ch), GT15-QBUS2 (Q bus connection 2ch)

TECHNICAL BULLETIN

[Issue No.] GOT-A-0043

[Page] 10/11

[Title] Precautions when Replacing GT15 Models with GT16 Models

[Date of Issue] Ver. *: May 2011

[Relevant Models] GOT1000 Series

*2 Not applicable for the GT1655.

*3 To download monitor screen data and others from a personal computer to the GOT via the GOT built-in RS-232 interface, the cable must be replaced.

*4 For the printer models applicable to the GOT1000 series (validated models), refer to TECHNICAL BULLETIN GOT-A-0010 "List of Valid Devices Applicable for GOT1000 Series" on the MELFANSweb website. To use the serial printer, GT Works3 with version 1.15R or later is required.

*5 GOT BootOS version 05.09.00AF or later supported

If you use the GOT with the BootOS whose version is earlier than 05.09.00AF installed, install the latest BootOS on the GOT by using GT Designer3 with version 1.15R or later.

5. Cables

5.1 Bus connection cables

The bus connection cables for the GT15 model are available for the GT16 model.

5.2 RS-232 cables

The RS-232 cables for the GT15 model are available for the GT16 model.

5.3 RS-422/485 cables

The RS-422/485 cables for the GT15 model are available for the GT16 model.

When the GT15-RS4-9P or the GT15-RS2T4-9P for the GT15 model is used and the GT15 model is replaced with the GT16 model with the GOT built-in interface, the GT16-C02R4-9S (RS-422 connector conversion cable) is required. When the GT15-RS2T4-25P for the GT15 model is used and the GT15 model is replaced with the GT16 model with the GOT built-in interface, the GT16-C02R4-25S (RS-422 connector conversion cable) is required.

5.4 Network cables (MELSECNET/H, MELSECNET/10, Ethernet, CC-Link IE, CC-Link)

The network cables for the GT15 model are available for the GT16 model.

For the Ethernet connection, the Ethernet communication unit for the GT15 is replaced with the GT16 built-in Ethernet interface. (The Ethernet communication unit cannot be mounted on the GT16.)

Since the connection location of the Ethernet cable is changed, check the wiring of the cable.

5.5 Other cables

The following cables for the GT15 model are available for the GT16 model.

- Printer cable
- CRT connection cable
- Coaxial cable for displaying video image
- Nine-core composite cable for the RGB display screen
- Connection cable for the Non-Mitsubishi FA devices
- Conversion cable for connecting the external I/O unit
- Analog RGB cable
- Data transfer cable (RS-232, USB)

TECHNICAL BULLETIN

[Issue No.] GOT-A-0043

[Page] 11/11

[Title] Precautions when Replacing GT15 Models with GT16 Models

[Date of Issue] Ver. *: May 2011

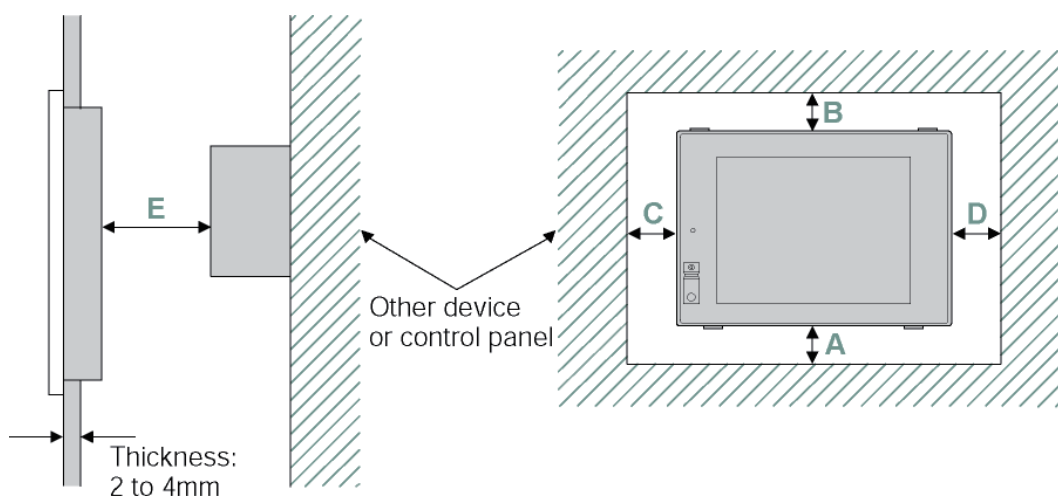
[Relevant Models] GOT1000 Series

6. Mounting intervals

When the GT15 model is replaced with the GT16 model, only the dimensions A and C are changed among the mounting intervals (Dimensions A to F in the below figure). The following explains the precautions for the mounting intervals.

For intervals required for each product, refer to the mounting intervals in the catalog.

In addition, when mounting a communication unit or option unit on the GOT to use the multi-channel function, refer to the user's manual of each communication unit and/or option for the dimensions E and F.



6.1 Downward dimension (Dimension A)

When the GT1555 main unit with no communication unit and the GT1555 is replaced with the GT1655, the following downward dimension (Dimension A) is required.

Table 6-1 Downward dimension (Dimension A)

(Unit: mm)

| GT15 model in use | | Replacement GT16 model | | Downward dimension (Dimension A) |
|-------------------|-------------|------------------------|-------------|----------------------------------|
| GT155□ | GT1555-VTBD | GT165□ | GT1655-VTBD | 46 or more→61 or more |

For the details, refer to the external dimensions in the appendixes of the GT15 User's Manual (SH-080528ENG) or the GT16 User's Manual (Hardware) (SH-080928ENG).

6.2 Side dimension (Dimension C)

When the GT1555 is replaced with the GT1655, changing the side dimension (Dimension C) is not required. When the battery and/or the CF card are used, more space is required for installing or removing the battery and the CF card. Therefore, the following side dimension (Dimension C) is required.

Table 6-2 Side dimension (Dimension C)

(Unit: mm)

| GT15 model in use | | Replacement GT16 model | | Side dimension (Dimension C) |
|-------------------|-------------|------------------------|-------------|-------------------------------------|
| GT155□ | GT1555-VTBD | GT165□ | GT1655-VTBD | 50 or more (20 or more)→100 or more |

For the details, refer to the external dimensions in the appendixes of the GT15 User's Manual (SH-080528ENG) or the GT16 User's Manual (Hardware) (SH-080928ENG).

| Version | Print date | Revision |
|---------|------------|-----------------|
| * | May 2011 | - First edition |