

TECHNICAL BULLETIN

[Issue No.] FA-A-0082

[Page] 1/3

[Title] Precautions when using the English version of GX Works2

[Date of Issue] April 2010

[Relevant Models] Mitsubishi Integrated FA software MELSOFT series
GX Works2

Thank you for your continued support of Mitsubishi integrated FA software, MELSOFT series.

This bulletin explains precautions when using the project data, which has been created in the Japanese version of GX Works2, in the English version of GX Works2.

1. Precautions

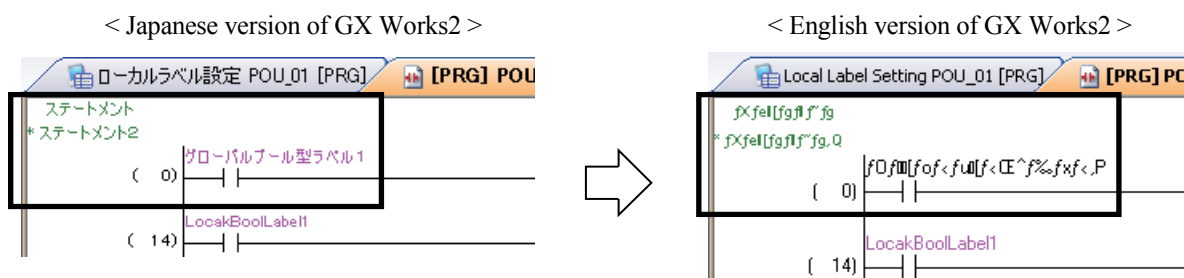
The English version of GX Works2 (SW1DNC-GXW2-E) does not support double byte character and half-width Japanese kana character. Therefore, when using the project data, which has been created in the Japanese version of GX Works2 (SW1DNC-GXW2-J) using double byte character or half-width Japanese kana character, in the English version of GX Works2, change all the double byte character and half-width Japanese kana character to single byte alphanumeric character. When reading the project data from the programmable controller CPU, it can be in the same manner.

2. Symptom examples

The followings are examples when using the project data, which has been created using double byte character or half-width Japanese kana character, in the English version of GX Works2.

(1) Displayed as garbled characters

When double byte character or half-width Japanese kana character has been set in the statement or label, they are displayed as garbled characters.



TECHNICAL BULLETIN

[Issue No.] FA-A-0082

[Page] 2/3

[Title] Precautions when using the English version of GX Works2

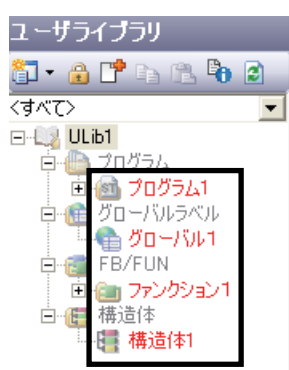
[Date of Issue] April 2010

[Relevant Models] Mitsubishi Integrated FA software MELSOFT series
GX Works2

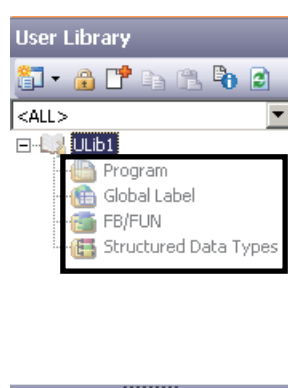
(2) Data name is not displayed

When double byte character or half-width Japanese kana character has been used in data names of user library files, data names cannot be displayed and user library cannot be operated.

< Japanese version of GX Works2 >



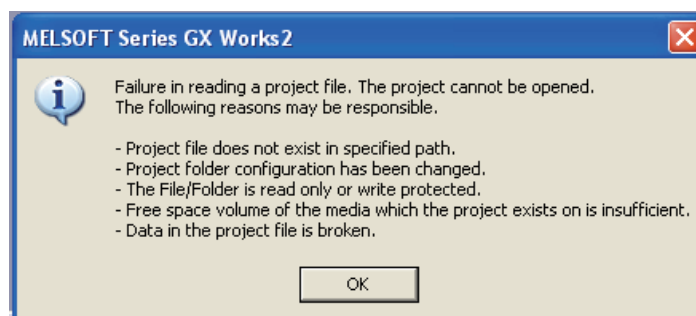
< English version of GX Works2 >



(3) Data cannot be opened

When opening saved project data in which double byte character or half-width Japanese kana character is used in workspace names or project names, the dialog shown below is displayed and the workspace cannot be opened.

< English version of GX Works2 >



TECHNICAL BULLETIN

[Issue No.] FA-A-0082

[Page] 3/3

[Title] Precautions when using the English version of GX Works2

[Date of Issue] April 2010

[Relevant Models] Mitsubishi Integrated FA software MELSOFT series
GX Works2

(4) Compilation error

When compiling the project data in which double byte character or half-width Japanese kana character is used in label names, compilation error occurs and compilation cannot be completed normally.

< English version of GX Works2 >

Output					
Rebuild All					
No.	Result	Data Name	Class	Content	Error Code
1	Error	Global1	Global label check	Invalid data name/label name '????????????1'.	C5043
2	Error	Global1	Global label check	Invalid data name/label name '????????????2'.	C5043
3	Error	Global1	Global label check	Invalid data name/label name '????????????3'.	C5043

Error: 3, Warning: 0, CheckWarning: 0