

**Subject:** Report of RT ToolBox2 Version 3.50C release

**Applicable to:** F series, SQ series, SD series, S series  
(CR750/CRnQ-700/CRnD-700/CRn-500 series robot controller)

Thank you for your continued support of Mitsubishi industrial robot "MELFA".

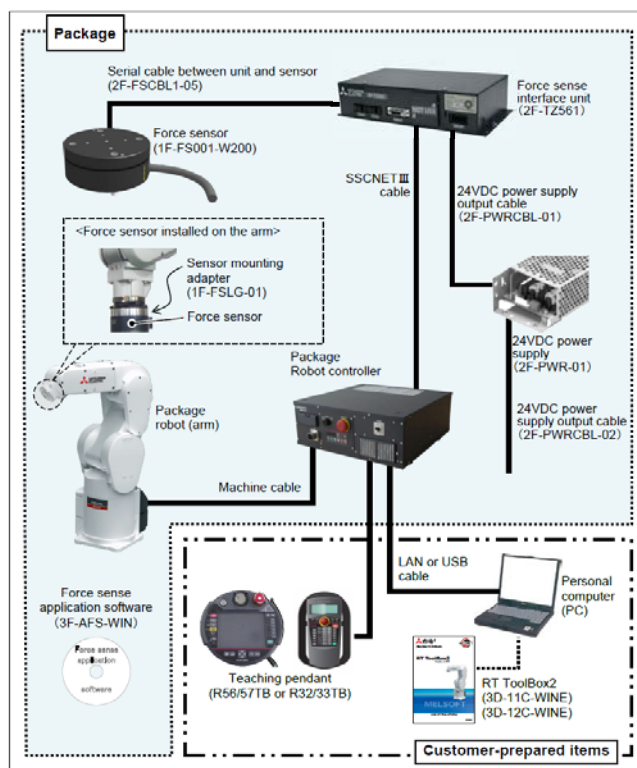
This Technical news describes the new version 3.50C of the RT ToolBox2.  
3D-11C-WINJ(E/C/T)/3D-12C-WINJ(E/C/T)

In order to use the functions described in this technical news, you need to download the latest version from MITSUBISHI ELECTRIC FA site, and upgrading the RT ToolBox2.

## 1. Application package

### ● Corresponded to the Force Sense application package.

The configuration of the machining application package product, because it does not have RT ToolBox2 is included, please note.

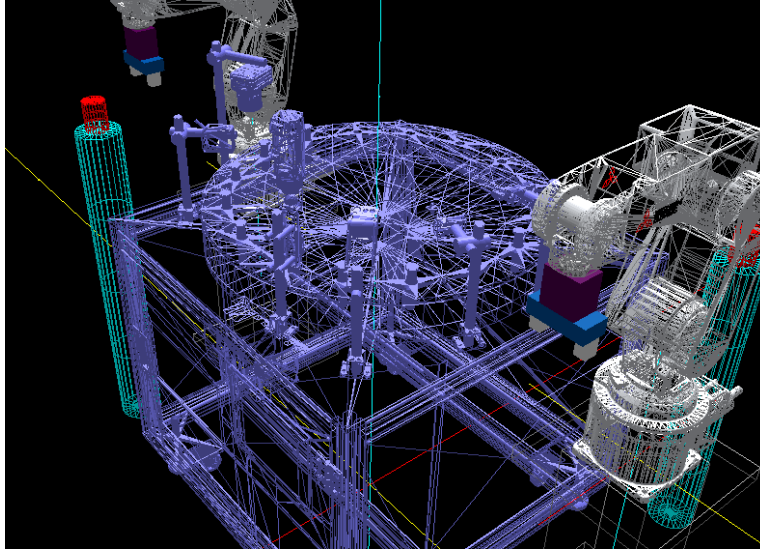


Configuration diagram of the force sense application package

## 2. 3D monitor

- Added the function of wire frame display of robot and layout model.

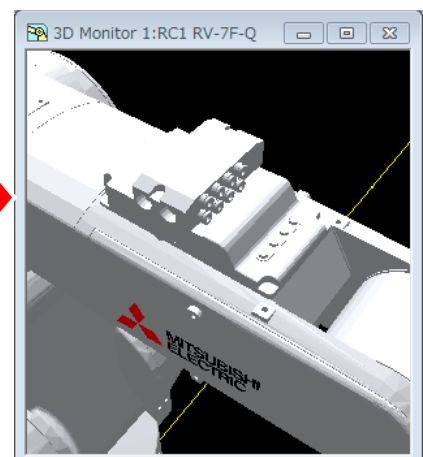
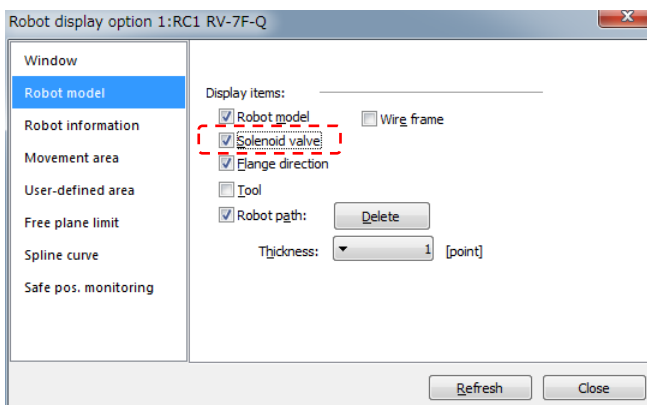
Robots (include hand) and layout it can be displayed in wire frame option of setting.



- Added the function of solenoid valve display of robot model.

This function can be used with the robot which can attach a solenoid valve, and display the solenoid valve which has 4 valves.

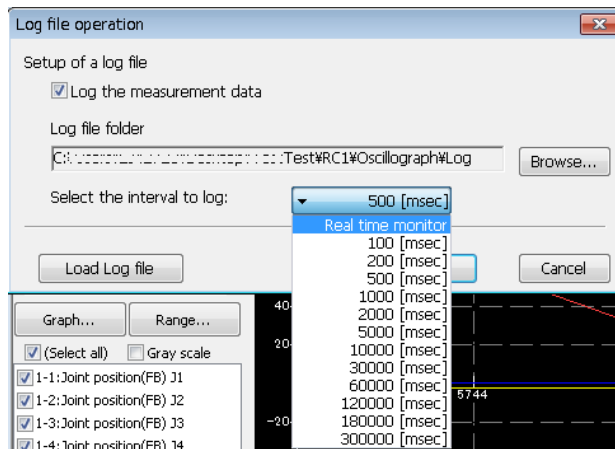
<b>Solenoid valve</b>	1F-VD0*(E)-02 1F-VD0*(E)-03
<b>Robot which can display a solenoid valve</b>	RV-4F series RV-7F series RV-13F series RV-20F series



### 3. Oscillograph

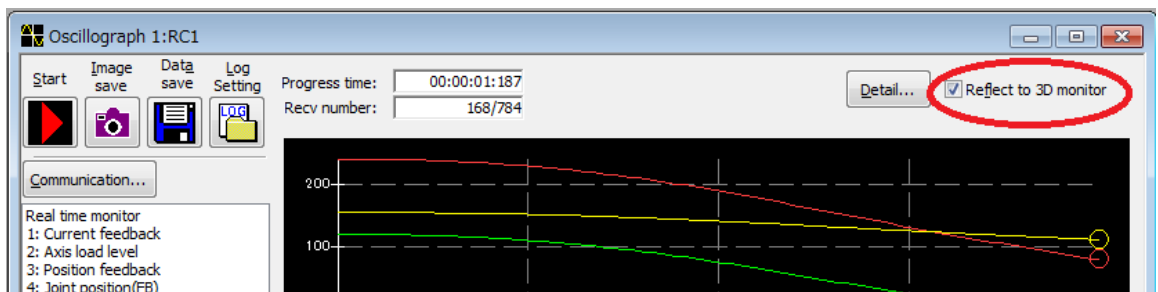
- Added “Real time monitor” of the "Select the interval to Log”.

When you select the [Real time monitor] of the [Select the interval to log] drop-down list, you can save all the data acquired in real time monitor to the log file. If the data is more than 50 million cases (about 1 hour), it will be saved to a new time stamp log file.



- Added the function of reflecting the displayed data(joint position) to 3D monitor.

When the check box of the [Reflect to 3D monitor] is turned on, you can reflect the joint position(FB) or joint position(CMD) monitor.

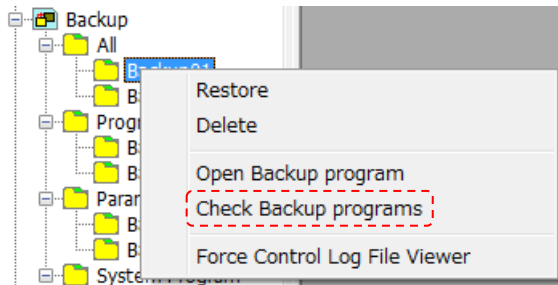


## 4. Restore

- Added the function of checking Backup programs.

You can confirm that there is no error in backed up programs.

Select the backed up information, and click the right mouse button. From the right mouse button menu, select [Check Backup programs]. You can use this function in “All”, “Program” and “System Program”.



## 5. Start menu

- The folder of the start menu changed from [MELSOFT Application] to [MELSOFT].

