



MITSUBISHI ELECTRIC AC SERVO TECHNICAL BULLETIN

[1 / 2]

[Issue No.] SV-A-0002
[Title] How to Paste Parameters from Different Models/Applications on MR Configurator2
[Date of Issue] January 2019
[Relevant Models] MR Configurator2

Thank you for your continued support of Mitsubishi Electric AC servo products.

This bulletin presents how to copy and paste parameters from different models and applications on the general-purpose servo setup software, MELSOFT MR Configurator2.

1 Summary

In order to prevent unexpected operations of the servo amplifier caused by an operation mistake, pasting parameters from different models, parameter numbers, or applications on MR Configurator2 is prohibited in default setting. These restrictions can be removed by changing the option setting.

2 What Setting Change Can Do

The following operation is enabled by changing the setting of parameter copy/paste.

Operation	Default setting	After setting change
Pasting parameters from different models (Example: Paste a parameter setting of MR-J4-A to MR-J4-B) (Example: Paste a parameter setting of operation mode "Standard" to operation mode "Linear" when model "MR-J4-B" is selected)	Unavailable	Available
Pasting parameters from different parameter numbers (Example: Paste a parameter setting of PA06 to PA07)	Unavailable	Available
Pasting parameters from different applications (Example: Paste a parameter setting copied on Excel® to MR Configurator2)	Unavailable *	Available
Copying and pasting parameters among several parameter setting screens (Example: When several parameter setting screens are open from MT Works2/ GX Works3)	Unavailable	Available

* Pasting the parameter setting to Excel® and saving data in CSV format are possible without this setting.

3 How to Change Setting

(1) Startup only MR Configurator2.

* If MR Configurator2 is started from another software such as MT Works2 or GX Works2/GX Works3, close it and directly startup MR Configurator2.

(2) Select [Tools] from the menu, and click [Options].

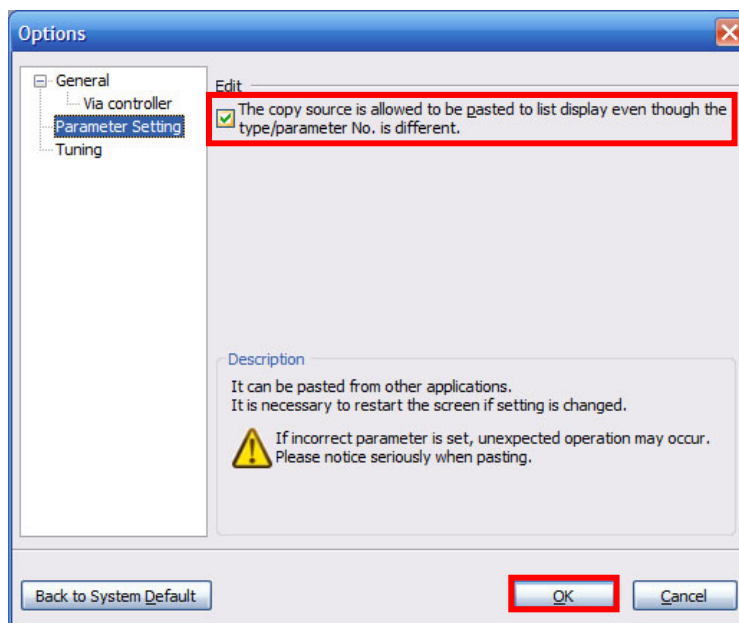
(3) From the left tree in the option screen, select [Parameter Setting].

MITSUBISHI ELECTRIC CORPORATION

HEAD OFFICE : TOKYO BUILDING, 2-7-3 MARUNOUCHI, CHIYODA-KU, TOKYO 100-8310, JAPAN
NAGOYA WORKS : 1-14, YADA-MINAMI 5-CHOME, HIGASHI-KU, NAGOYA, JAPAN

[Issue No.] SV-A-0002

- (4) Check [The copy source is allowed to be pasted to list display even though the type/parameter No. is different.] in the edit item, and click [OK].



- (5) When MR Configurator2 is restarted, the new setting is valid.
After setting, this setting is valid even if MR Configurator2 is started with MT Works2, GX Works2/GX Works3, etc.

4 Caution

- If incorrect parameters are set to the servo amplifier, unexpected operations may occur. Please be careful when pasting parameters.
- Parameters may not be pasted if the parameter type (decimal/hexadecimal or integer/decimal) is different between the copy source and the pasting destination. In this case, check the parameters.
- In principle, do not change the setting value of the parameter for manufacturer setting. Unexpected operations may occur.
- Excel® is either a registered trademark or a trademark of Microsoft Corporation in the United States and/or other countries.

Revisions

Sub-No.	Issued date	Revision details
-	January 2019	First edition