



TECHNICAL BULLETIN

[1 / 3]

[Issue No.] GOT-A-0180-A

[Title] Restrictions on GT Designer3 (GOT2000) Version 1.265B or Later and GT SoftGOT2000 Version 1.265B or Later

[Date of Issue] November 2021 (Ver. A: August 2022)

[Relevant Models] MELSOFT GT Works3 Version1

Thank you for your continued support of Mitsubishi Electric Graphic Operation Terminal (GOT). As the GT Designer3 (GOT2000) installer and GT SoftGOT2000 installer will be changed, the following restrictions will be placed on the software products with version 1.265B or later.

1. Operation at installation

When GT Designer3 (GOT2000) or GT SoftGOT2000 is updated from version earlier than 1.265B to version 1.265B or later, the software installer will execute the following processing.

1.1 Processing of the installer and corrective action

Table 1 Processing of the installer and corrective action

| Affected product | Processing of the installer | Corrective action |
|------------------------|--|--|
| GT Designer3 (GOT2000) | Uninstalling the former version at installation of the new version | No action is required. |
| GT SoftGOT2000 | | Continue the processing. |
| GT Designer3 (GOT2000) | Deleting the sample projects that have been installed | Install the latest version of the sample projects. For details on the latest version of the sample projects, contact your local sales office. |

1.2 Reason

(1) Uninstalling the former version at installation of the new version

As the GT Designer3 (GOT2000) installer and GT SoftGOT2000 installer will be changed, the former software version needs to be uninstalled before installation of the new version.

(2) Deleting the sample projects that have been installed

When the former version is uninstalled in (1), the installation destination folder that stores the sample projects needs to be returned to the state before installation.

2. Restrictions after installation

After GT Designer3 (GOT2000) version 1.265B or later is installed, if a software product with version shown in Table 2 is installed, an error shown in Fig 1, 2, or 4 will occur and the installation will be interrupted.

Download and install the software according to the corrective action shown in Table 2.

2.1 Affected software and corrective action

Table 2 Software resulted in error at installation and corrective action

| Software | Affected version | Error message | Corrective action |
|--|---|-----------------|--|
| Sample projects (for GT Designer3 (GOT2000)) | Earlier than version 1.265B | Refer to Fig 1. | Install the sample projects version 1.265B or later. For details on the sample projects version 1.265B or later, contact your local sales office. |
| MELSOFT GT Works3 Add-on license (for GOT2000 enhanced drive control (servo) project data) | Earlier than version 1.002C | Refer to Fig 2. | Install the add-on license version 1.002C or later. For details on the add-on license version 1.002C or later, contact your local sales office. |
| GT Designer3 ANDON signage function patch installer | Included in the iQ Monozukuri Andon product DVD having a number earlier than 211005 (Refer to Fig 3.) | Refer to Fig 4. | Run the GT Designer3 ANDON signage function patch installer (iQM_ANDON_Signage.exe). For details on the GT Designer3 ANDON signage function patch installer (iQM_ANDON_Signage.exe), contact your local sales office. |

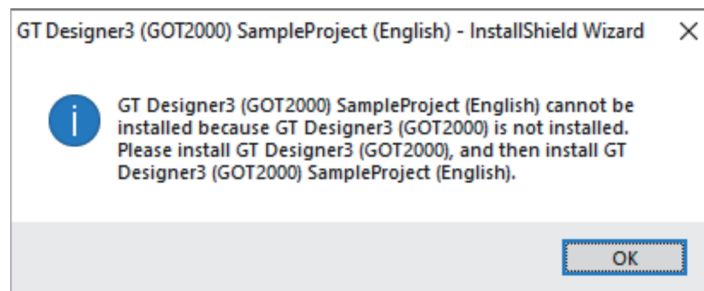


Fig 1 Error message of the sample projects (for GT Designer3 (GOT2000))

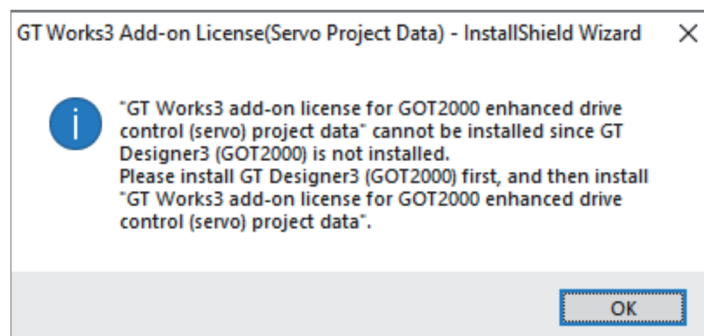
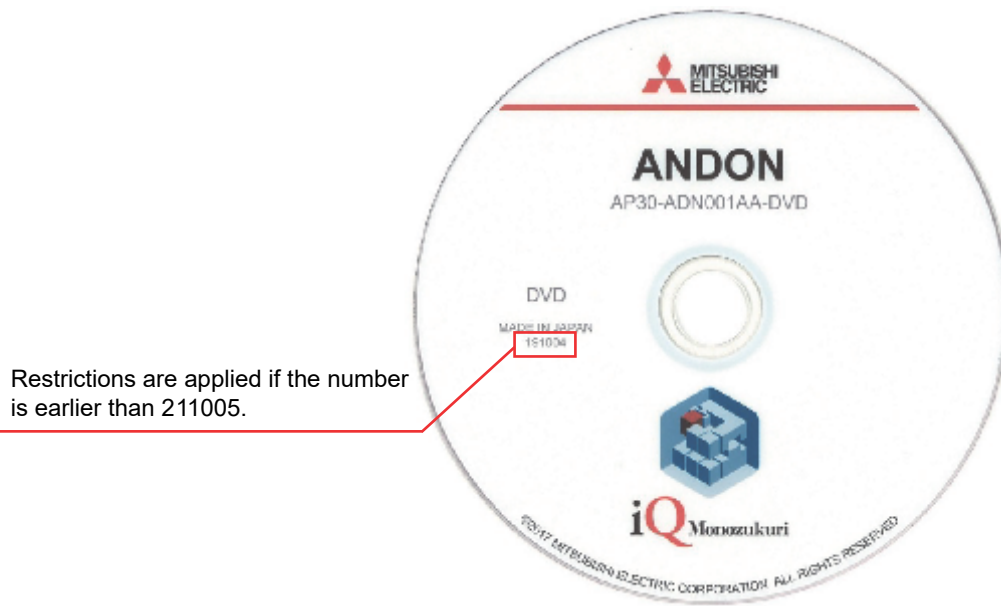


Fig 2 Error message of the MELSOFT GT Works3 add-on license (for GOT2000 enhanced drive control (servo) project data)



Restrictions are applied if the number is earlier than 211005.

Fig 3 Location of the number provided on the iQ Monozukuri ANDON product DVD

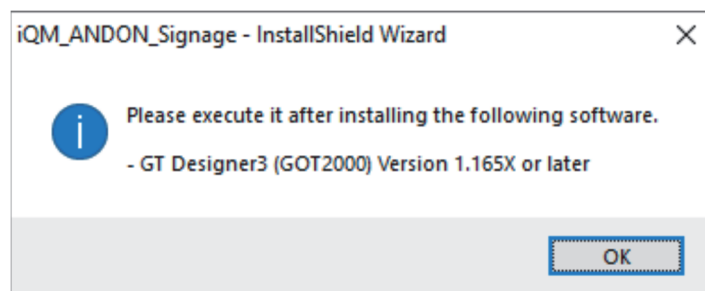


Fig 4 Error message of the GT Designer3 ANDON signage function patch installer

2.2 Reason

After the GT Designer3 (GOT2000) installer is changed, the installers of the software products shown in Table 2 cannot determine whether GT Designer3 (GOT2000) 1.265B or later is installed.

REVISIONS

| Version | Print date | Revision |
|---------|---------------|--|
| - | November 2021 | - First edition |
| A | August 2022 | - Changed the iQ Monozukuri ANDON product DVD image. |