

TECHNICAL BULLETIN
[1 / 3]

[Issue No.] GOT-A-0158

[Title] Change of Applicable Safety Standards and Specifications

[Date of Issue] November 2020

[Relevant Models] MELIPC Series

Thank you for your continued support of Mitsubishi Electric industrial computer MELIPC series. This bulletin informs you that the safety standards applicable to MELIPC MI3000 will change. The product specifications will also change as the LCD module unit of the product will be changed.

1. Models affected and schedule

The following shows the models affected and the applicable safety standards and schedule of changing the LCD module unit.

Table 1 List of the models affected

Product	Model	Screen size	Schedule
MELIPC MI3000	MI3321G-W	21-inch Full HD	December 2020 production and later *1
	MI3315G-W	15-inch XGA	

*1 Applicable models may have the former LCD module unit or the new one in the distribution stage.

2. Change of the applicable safety standards

The safety standards IEC 60950-1 and IEC 60065 will lose effect on December 20, 2020 and be unified into the new standard IEC 62368-1.

Accordingly, MELIPC MI3000 will comply with the new standard IEC62368-1 (EN/UL/CSA 62368-1).

Table 2 List of the models affected and applicable standards

Product	Model	Before	After
MELIPC MI3000	MI3321G-W	EN 60950-1 UL 60950-1 CSA 60950-1	EN 62368-1 UL 62368-1 CSA 62368-1
	MI3315G-W		

3. Changes of the specifications

The LCD module unit (LCD, front panel, and rear case) of MELIPC MI3000 will be changed based on the BCP*1.

The specifications of the display section and structure will be changed accordingly.

The color tone of the LCD will be slightly different after the change.

The general specifications, performance specifications, functions, and external dimensions of the product are not affected.

*1 BCP: Business Continuity Plan

3.1 Change of the LCD

The LCD will be changed.

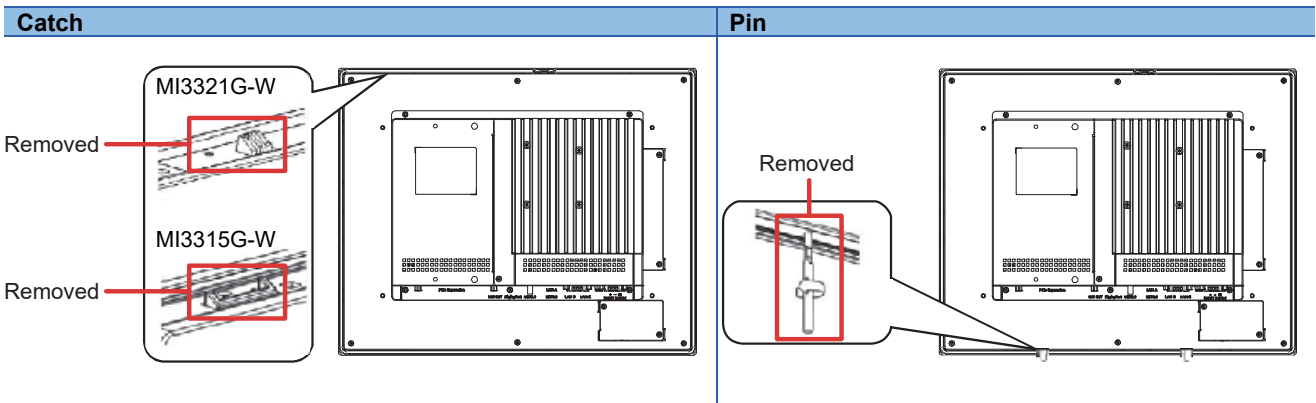
The following shows the differences in the specifications of the display section before and after the LCD change.

Table 3 Comparison: Specifications of the display section

Product	Model	Screen size	Contrast ratio before change	Contrast ratio after change
MELIPC MI3000	MI3321G-W	21-inch Full HD	5000:1	1000:1
	MI3315G-W	15-inch XGA	700:1	2000:1

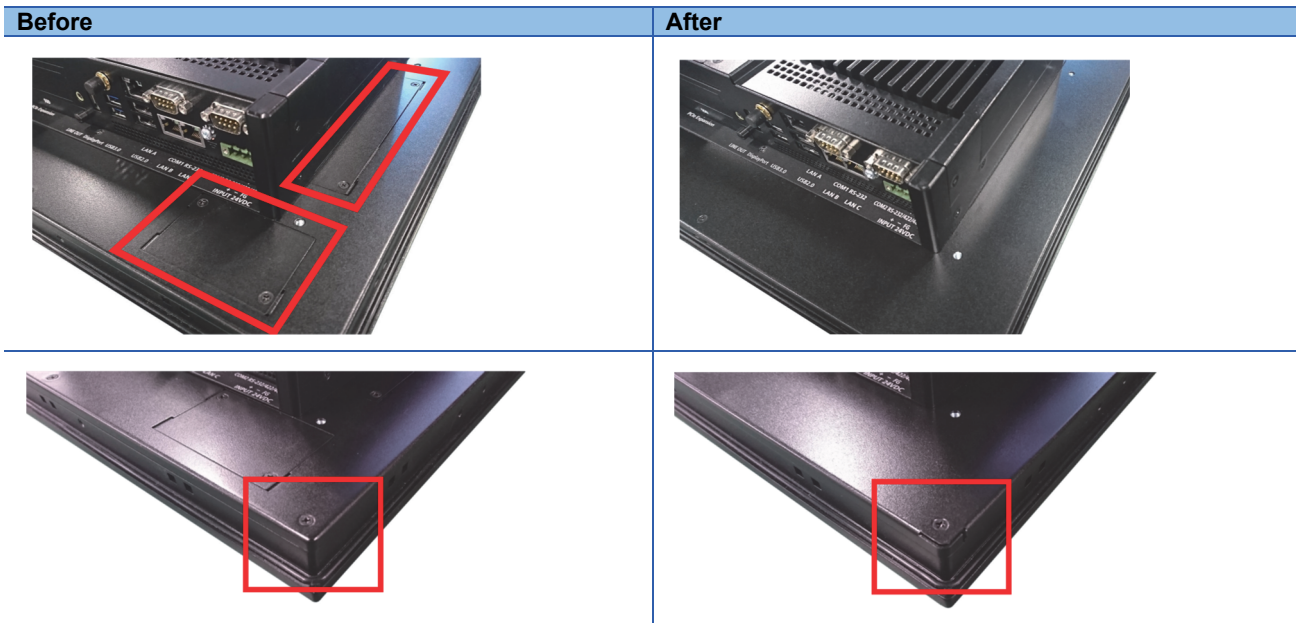
3.2 Removal of the catch(es) and pins

The upper catch(es) and the lower pins to temporarily fasten the product to the control panel will be removed.



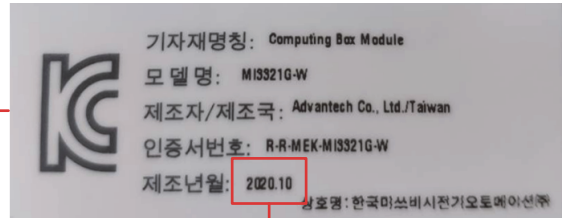
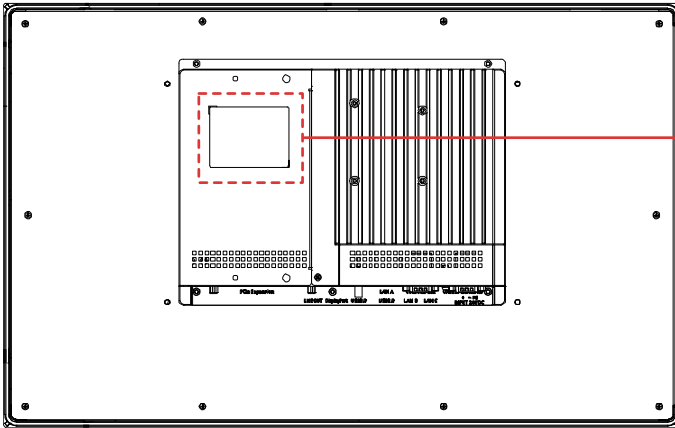
3.3 Change of the rear case design

The rear case design of the LCD module unit will be changed.



4. How to identify the new products

The new LCD module unit will be used for the products manufactured in December 2020 and later. Check the rating plate for the manufacture month and year.



Manufacture month and year of the MI3000

REVISIONS

Version	Print Date	Revision
-	November 2020	- First edition