

# TECHNICAL BULLETIN

[Issue No.] FA-A-0028

[Page] 1/5

[Title] New additional function for the MELSEC-Q series  
Loop Control Module

[Date of Issue] Mar., '08

[Relevant Models] Q62HLC

Thank you for your continued support of Mitsubishi programmable controllers, MELSEC-Q series.

New function, "Control status selection when switching to program control" has been added to the Q62HLC.

Refer to Section 1.1 for a list of the function added and Section 1.2 for the production information and product information of supported module.

## Contents

1. New function .....	1
1.1 New function .....	1
1.2 Production information and product information of supported module.....	2
1.3 Changes arising when using the function "Control status selection when switching to program control" .....	4
1.4 Compatibility with old models .....	4
2. Details of the new function .....	5
2.1 Control status selection when switching to program control.....	5
2.2 Precautions for control status when switching to program control .....	5

## 1. New function

This section explains the new function.

### 1.1. New function

The following table lists the new function.

Item	Description	Reference section
Control status selection when switching to program control	When switching standard control to program control or switching manual control to program control in the operation mode (Xn1: ON), the control status at switching can be selected.	Section 2.1

# TECHNICAL BULLETIN

[Issue No.] FA-A-0028

[Page] 2/5

[Title] New additional function for the MELSEC-Q series  
Loop Control Module

[Date of Issue] Mar., '08

[Relevant Models] Q62HLC

## 1.2 Production information and product information of supported module

The production information and product information of module that supports this new function, and how to check them are shown below.

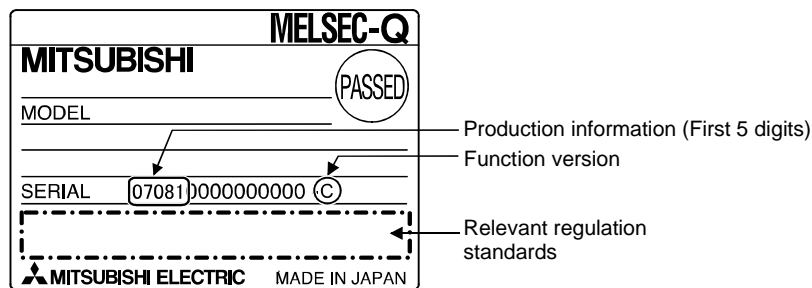
### (1) Production information and product information of supported module

The following table lists the production information and product information of the module that supports the new function.

Model	Production information	Product information
Q62HLC	First 5 digits are 10022 or later	First 5 digits are 10011 or later

### (2) How to check the production information

The production information can be checked from the "rating plate" located on the side of the module.



# TECHNICAL BULLETIN

[Issue No.] FA-A-0028

[Title] New additional function for the MELSEC-Q series  
Loop Control Module

[Relevant Models] Q62HLC

[Page] 3/5

[Date of Issue] Mar., '08

### (3) How to confirm the product information

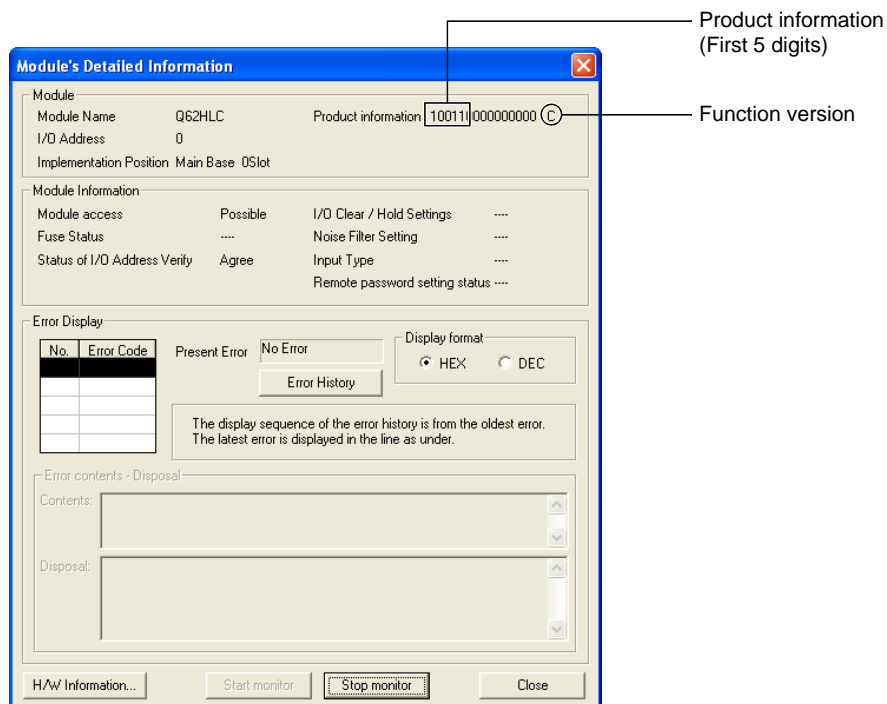
The product information can be confirmed by selecting the Q62HLC detailed information in GX Developer system monitor.

(a) Operating GX Developer

[Diagnostics] → [System monitor] → "Select Q62HLC" → Module Detailed Information

(b) Confirming the product information

The product information of the Q62HLC is displayed in the Product information field.



# TECHNICAL BULLETIN

[Issue No.] FA-A-0028

[Page] 4/5

[Title] New additional function for the MELSEC-Q series  
Loop Control Module

[Date of Issue] Mar., '08

[Relevant Models] Q62HLC

## 1.3 Changes arising when using the function "Control status selection when switching to program control"

The following describes the changes arising when using the function "Control status selection when switching to program control".

Item	Description		Reference section
	Old model	Supported model (Refer to Section 1.2 (1).)	
Intelligent function module switch setting (Switch 2)	Reserved (0 fixed)	Control status when switching to program control can be selected. 1 : Switch with executing control Other than 1 : Switch with suspending control	Section 2.1
Manipulated value (MV value)	The manipulated value (MV) becomes -50 for 25ms when switching to program control. (Suspends the PID control to switch into program control.)	The control status when switching to program control can be selected in the intelligent function module switch setting (Switch 2).	

## 1.4 Compatibility with old models

When replacing an old model with an upgraded one (Refer to Section 1.2 (1).), it is not necessary to configure settings or change a program using GX Configurator-TC.

- The default setting of the newly added function "Control status selection when switching to program control" is "0000H:Switch with suspending control" in the same way as the conventional products.

**[Issue No.]** FA-A-0028

**[Page]** 5/5

**[Title]** New additional function for the MELSEC-Q series  
Loop Control Module

**[Date of Issue]** Mar., '08

**[Relevant Models]** Q62HLC

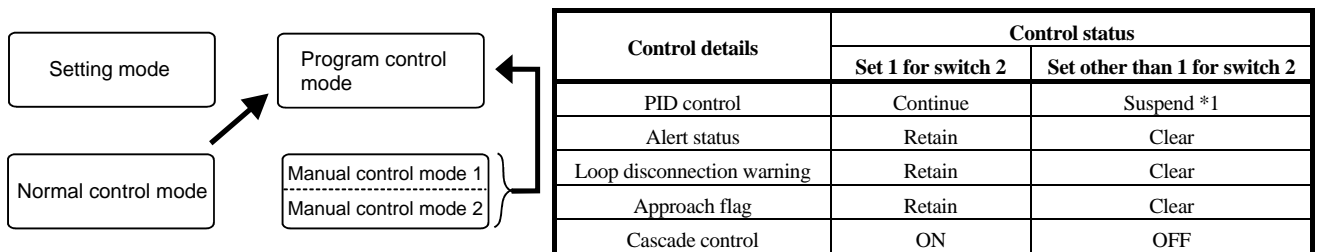
## 2. Details of the new function

The details of the new function are explained in this section.

### 2.1 Control status selection when switching to program control

When switching standard control to program control or switching manual control to program control in the operation mode (Xn1: ON), the control status at switching can be selected.

Set the control status at switching with the intelligent function module switch setting (Switch 2).



\*1: The manipulated value (MV) becomes -50 for 25ms when switching to program control.

### 2.2 Precautions for control status when switching to program control

Check the following contents when switching to program control in the operation mode (Xn1: ON).

- (1) Set the start mode setting to PV starting 1 (Time fixed) or PV starting 2 (Time shortened).
- (2) Make sure that the each parameter settings for program control is not in an error status to prevent control operation in the setting error status.