

TECHNICAL BULLETIN

[Issue No.] FA-A-0122

[Page] 1/4

[Title] Corrections of sample programs in the manuals for a temperature input module and an analog input module

[Date of Issue] September 2011

[Relevant Models] Q64TD, Q64TDV-GH, Q68TD-G-H01, Q68TD-G-H02, Q64RD, Q64RD-G, Q68RD3-G, Q68AD-G, Q66AD-DG

Thank you for your continued support of Mitsubishi programmable controllers, MELSEC-Q series.

This bulletin provides information on corrections of program examples in the user's manuals for a temperature input module and an analog input module.

The following table lists the affected manuals and the sections where the correction is required.

Relevant model	Manual	Manual number	Section to be corrected
Q64TD Q64TDV-GH	Thermocouple Input Module Channel Isolated Thermocouple/Micro Voltage Input Module User's Manual	SH-080141-M	Page 6-3, Section 6.1.2
Q68TD-G-H01 Q68TD-G-H02	Channel Isolated Thermocouple Input Module User's Manual	SH-080795ENG-A	Page 6-14, Section 6.2.3 (3)
Q64RD Q64RD-G	RTD Input Module Channel Isolated RTD Input Module User's Manual	SH-080142-M	Page 6-3, Section 6.1.2
Q68RD3-G	Channel Isolated RTD Input Module User's Manual	SH-080722ENG-B	Page 6-16, Section 6.2.3 (3)
Q68AD-G Q66AD-DG	Channel Isolated Analog-Digital Converter Module/Channel Isolated Analog-Digital Converter Module (With Signal Conditioning Function) User's Manual	SH-080647ENG-E	Page 6-9, Section 6.2.3 (2) Page 6-28, Section 6.4.3

The program examples have already been revised in the following manuals issued in September, 2011.

- SH-080141-N
- SH-080795ENG-B
- SH-080142-N
- SH-080722ENG-C
- SH-080647ENG-F

TECHNICAL BULLETIN

[Issue No.] FA-A-0122

[Page] 2/4

[Title] Corrections of sample programs in the manuals for a temperature input module and an analog input module

[Date of Issue] September 2011

[Relevant Models] Q64TD, Q64TDV-GH, Q68TD-G-H01, Q68TD-G-H02, Q64RD, Q64RD-G, Q68RD3-G, Q68AD-G, Q66AD-DG

1. Correction details

The program example when utility package is not used is corrected as shown in the figure below.

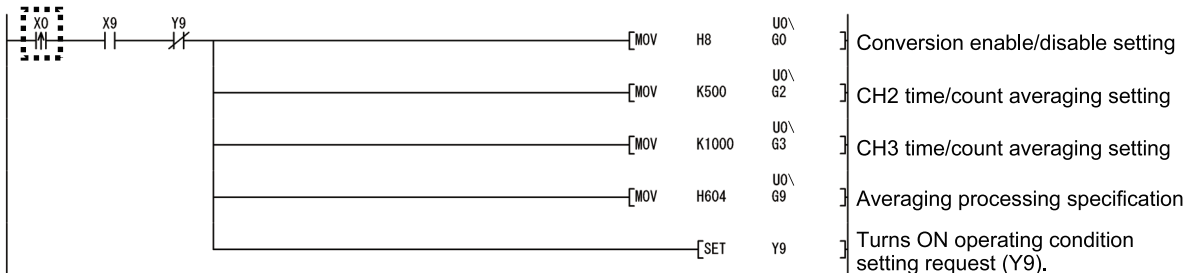
(1) For Q64TD, Q64TDV-GH, Q68TD-G-H01, Q68TD-G-H02, Q64RD, Q64RD-G, and Q68RD3-G

The program example shown below is for the Q64TD.

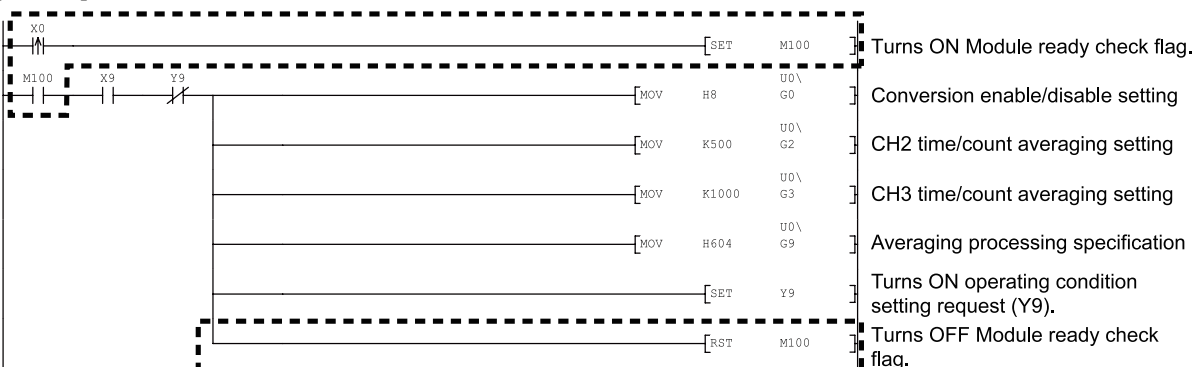
For the program example of the model other than the Q64TD, the dotted line area is corrected in the same way for the Q64TD.

Note that when apply the program example to the Q68TD-G-H01, Q68TD-G-H02, and Q68RD3-G, rewrite "M100" to "M0". (M100 is already used for the program example when programs are used on remote I/O network.)

[Incorrect]



[Correct]



TECHNICAL BULLETIN

[Issue No.] FA-A-0122

[Page] 3/4

[Title] Corrections of sample programs in the manuals for a temperature input module and an analog input module

[Date of Issue] September 2011

[Relevant Models] Q64TD, Q64TDV-GH, Q68TD-G-H01, Q68TD-G-H02, Q64RD, Q64RD-G, Q68RD3-G, Q68AD-G, Q66AD-DG

(2) For Q68AD-G and Q66AD-DG

The program example shown below is for the Q68AD-G.

For the program example of the model other than the Q68AD-G, the dotted line area is corrected in the same way for the Q68AD-G.

[Incorrect]

Initial settings

	[MOV	H0F8	U0\ G0] A/D conversion enable /disable setting
	[MOV	K50	U0\ G2] CH2 Average time/ Average number of times/ Move average/ Time constant settings
	[MOV	K100	U0\ G3] CH3 Average time/ Average number of times/ Move average/ Time constant settings
	[MOV	H420	U0\ G24] Averaging process specification
	[MOV	H0FE	U0\ G47] Input signal error detection settings
	[MOV	H0FBFD	U0\ G48] Warning output settings
	[MOV	K1000	U0\ G90] CH2 process alarm lower lower limit value
	[MOV	K1500	U0\ G91] CH2 process alarm lower upper limit value
	[MOV	K6000	U0\ G92] CH2 process alarm upper lower limit value
	[MOV	K7000	U0\ G93] CH2 process alarm upper upper limit value
	[MOV	K50	U0\ G120] CH3 rate alarm warning detection period
	[MOV	K3	U0\ G130] CH3 rate alarm upper limit value
	[MOV	K1	U0\ G131] CH3 rate alarm lower limit value
	[MOV	K100	U0\ G142] CH1 input signal error detection setting value
	[SET	Y9] Turns ON operation condition setting request (Y9).

TECHNICAL BULLETIN

[Issue No.] FA-A-0122

[Page] 4/4

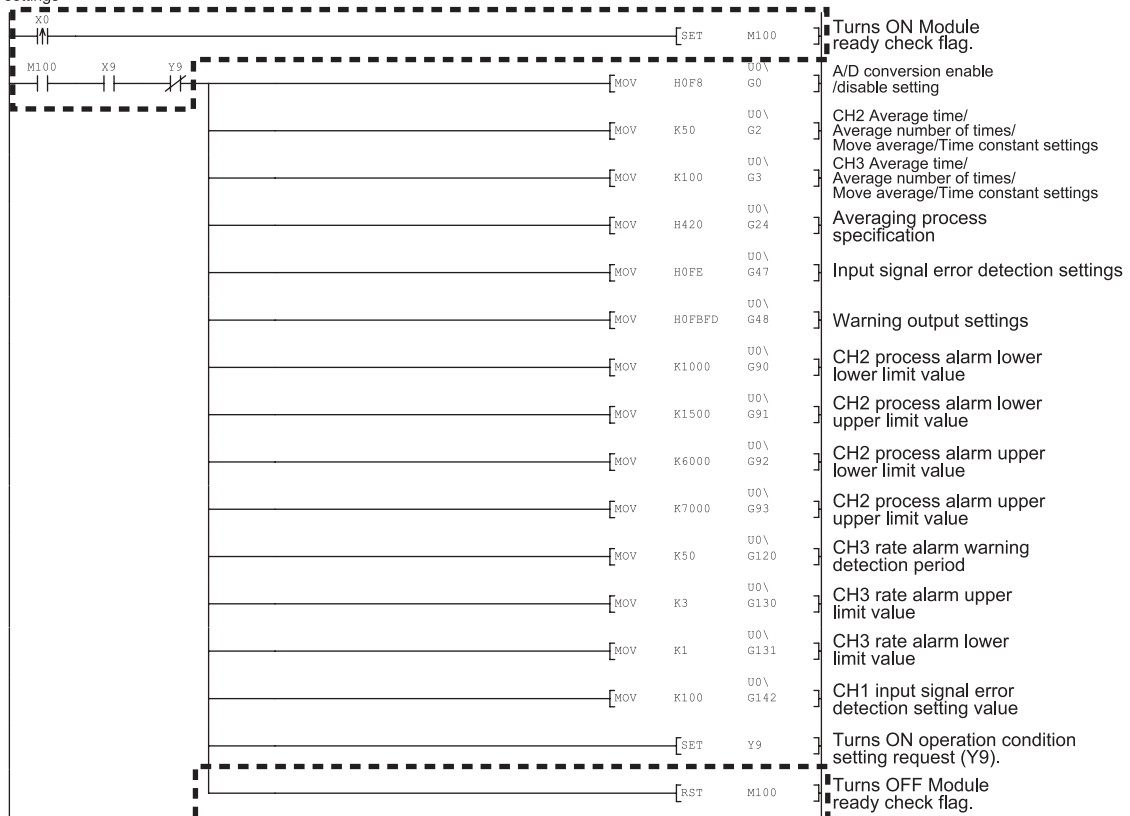
[Title] Corrections of sample programs in the manuals for a temperature input module and an analog input module

[Date of Issue] September 2011

[Relevant Models] Q64TD, Q64TDV-GH, Q68TD-G-H01, Q68TD-G-H02, Q64RD, Q64RD-G, Q68RD3-G, Q68AD-G, Q66AD-DG

[Correct]

Initial settings



2. The operation of the module when a wrong program is used.

The initial settings might not be written when the following operations are performed.

- Reset the programmable controller CPU, and set the RUN/STOP switch to RUN.
- Turn on the power with the RUN/STOP switch of the programmable controller CPU being set to RUN.