

TECHNICAL BULLETIN

[Issue No.] T09-0020

[Page] 1/2

[Title] Upgraded functions of the MELSEC-Q series Ethernet interface modules

[Date of Issue] Aug. '05

[Relevant Models] QJ71E71-100, QJ71E71-B5, QJ71E71-B2

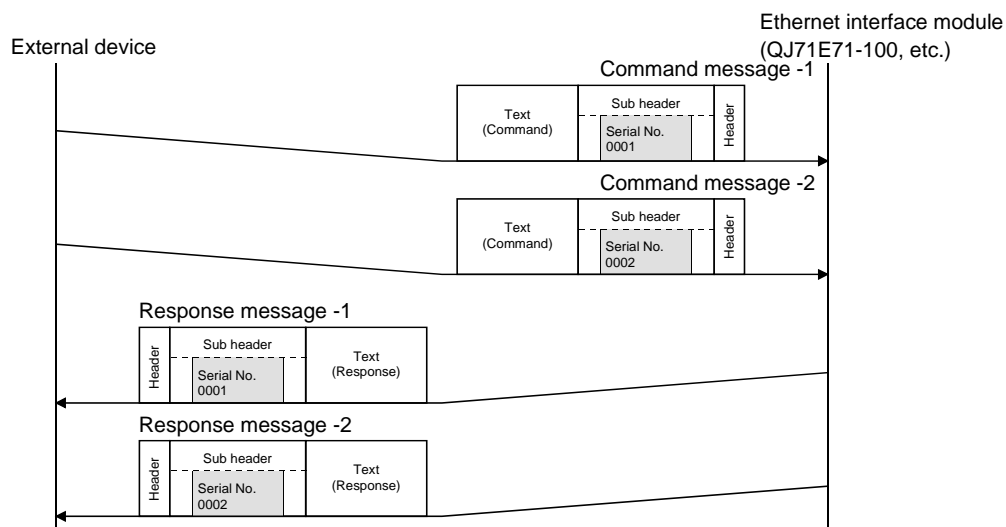
Thank you for your continued support of Mitsubishi programmable logic controllers, MELSEC-Q series. The functions of the MELSEC-Q series Ethernet interface modules have been upgraded as shown below.

1. Additional functions

The following functions have been added for the products whose serial numbers' first 5 digits are 07082 or later.

| Function | | Description |
|--------------------------------|---|--|
| Communication by MC protocol | 4E frame | The 4E frame can be used, in which a field for any message identification number (Serial No.) is provided in addition to data of the QnA compatible 3E frame. Since the external device adds a serial No. for message identification, a response message corresponding to a command message can be identified among multiple messages. *1 |
| Data link instruction | Increased data length (480 to 960 words) | The data length can be specified up to 960 words in the following data link instructions: <ul style="list-style-type: none"> • SEND • RECV/RECVS • READ/SREAD • WRITE/SWRITE |
| When using the e-mail function | Sending character strings in the e-mail's main text by the PLC CPU monitoring function *2 | Character string data stored in word devices can be sent in the e-mail's main text by the PLC CPU monitoring function. *3 |

*1 The flow of the command and response messages in the 4E frame is as follows:



- The structure containing the header and text (command) or text (response) is the same as that of the QnA compatible 3E frame.
- For consecutive transmission of multiple command messages from the external device, there are restrictions on the number of the command messages that the Ethernet interface module can receive. Please refer to the Q Corresponding MELSEC Communication Protocol Reference Manual (SH-080008) for the restrictions.

MITSUBISHI ELECTRIC CORPORATION

HEAD OFFICE : 1-8-12, OFFICE TOWER Z 14F HARUMI CHUO-KU 104-6212, JAPAN
NAGOYA WORKS : 1-14, YADA-MINAMI 5-CHOME, HIGASHI-KU, NAGOYA, JAPAN

TECHNICAL BULLETIN

[Issue No.] T09-0020

[Page] 2/2

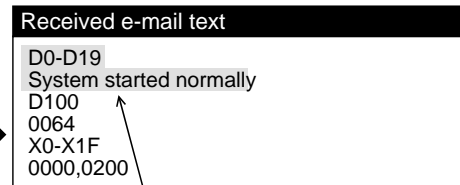
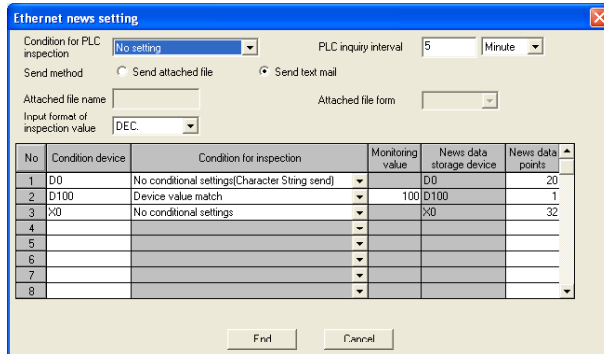
[Title] Upgraded functions of the MELSEC-Q series Ethernet interface modules

[Date of Issue] Aug. '05

[Relevant Models] QJ71E71-100, QJ71E71-B5, QJ71E71-B2

*2 To utilize the character string transmission, GX Developer Version 8.27D or later is needed.

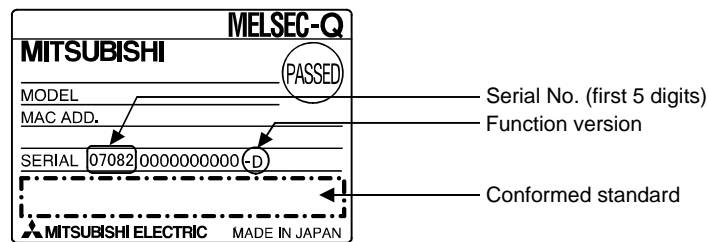
*3 The following is an example of text mail transmission by the PLC CPU monitoring function.
The e-mail is sent at D100=100.



Character string transmission
In this case, "System started normally"
is stored in D0 to D19.

2. Checking the Serial No.

You can check the serial No. (first 5 digits) at the SERIAL section of the rating plate on the side of module.



3. Manuals

| Manual name | Manual No. | Sub No. | Model code |
|---|------------|-------------|------------|
| Q Corresponding Ethernet Interface Module User's Manual (Basic) | SH-080009 | -J or later | 13JL88 |
| Q Corresponding Ethernet Interface Module User's Manual (Application) | SH-080010 | -H or later | 13JL89 |
| Q Corresponding MELSEC Communication Protocol Reference Manual | SH-080008 | -G or later | 13JF89 |

MITSUBISHI ELECTRIC CORPORATION

HEAD OFFICE : 1-8-12, OFFICE TOWER Z 14F HARUMI CHUO-KU 104-6212, JAPAN
NAGOYA WORKS : 1-14, YADA-MINAMI 5-CHOME, HIGASHI-KU, NAGOYA, JAPAN