

## TECHNICAL BULLETIN

**[Issue No.]** T40-0003

**[Page]** 1/3

**[Title]** Cautions on the leap day (Basic model QCPU)

**[Date of Issue]** Oct., '04

**[Relevant Models]** Q00JCPU, Q00CPU, Q01CPU

---

Thank you for your continued support of Mitsubishi programmable logic controllers, MELSEC-Q series.

On 29<sup>th</sup> February, i.e., the leap day, data might not be written to some CPU modules when “Write to PLC” is executed using GX Developer or others. (This is irrelevant to the CPU module with first five digits of serial No. 06032 or later.)

This problem occurs when the operations in item 2 are performed in the running system however, which does not affect the running CPU module.

We recommend executing the corrective actions in item 3, so that the current system will work without any modifications.

### 1. Relevant Models

The Basic model QCPU models, Q00JCPU, Q00CPU and Q01CPU are relevant.

Note that Q series CPUs other than Basic model QCPU are irrelevant.

# TECHNICAL BULLETIN

**[Issue No.]** T40-0003

**[Page]** 2/3

**[Title]** Cautions on the leap day (Basic model QCPU)

**[Date of Issue]** Oct., '04

**[Relevant Models]** Q00JCPU, Q00CPU, Q01CPU

## 2. Problem Causes and Phenomena

The following table shows the products that may develop the problem and the relevant conditions.

Table 1. Problem causes and phenomena

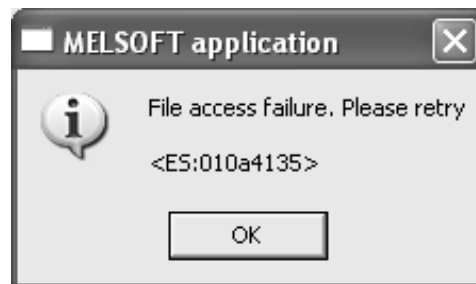
No.	Product name	Operations causing the problem	Conditions	Phenomena
1	GX Developer	<ul style="list-style-type: none"> <li>Writing a file to PLC (Including writing file registers to PLC)</li> <li>Online program change, i.e., changing programs while CPU is running.</li> <li>Changing the T/C setting value (*2)</li> </ul>	The PC's date is set to "February, 29 <sup>th</sup> ".	An error message appears and the operation cannot be executed. (*4)
2		<ul style="list-style-type: none"> <li>Clearing all file registers in the PLC memory</li> <li>Title creation for PLC</li> </ul>		
3	GX Configurator-□ (*1)	<ul style="list-style-type: none"> <li>Writing intelligent function module parameters to PLC</li> </ul>		
4	GX Explorer	<ul style="list-style-type: none"> <li>Writing a file to PLC</li> </ul>		
5	Ethernet interface module (*3)	<ul style="list-style-type: none"> <li>Writing a file using the FTP server function</li> </ul>	The CPU's date is set to "February, 29 <sup>th</sup> ".	An error response (response code: 4135H) is returned to the external device (FTP client).
6	GOT	<ul style="list-style-type: none"> <li>Writing file registers to PLC</li> <li>T/C setting value (*2) change</li> </ul>		The error (error code: 358H) appears when system alarm is set.
7	Communication devices based on MC protocol	<ul style="list-style-type: none"> <li>Executing the command (1820H) to create a new file</li> </ul>		"February, 29 <sup>th</sup> " is specified using the command.
8		<ul style="list-style-type: none"> <li>Changing the file creation date</li> <li>Executing the command (1826H)</li> </ul>		

\*1: GX Configurator-AD, GX Configurator-DA, GX Configurator-SC, GX Configurator-CT, GX Configurator-TC, GX Configurator-TI, GX Configurator-FL, GX Configurator-DN, GX Configurator-PT, GX Configurator-AS, GX Configurator-MB, GX Configurator-QP, GX Configurator-DP

\*2: Timer (T), Counter (C).

\*3: QJ71E71-B2, QJ71E71-B5, QJ71E71-100

\*4: The error message below appears.



**MITSUBISHI ELECTRIC CORPORATION**

HEAD OFFICE : 1-8-12, OFFICE TOWER Z 14F HARUMI CHUO-KU 104-6212, JAPAN  
NAGOYA WORKS : 1-14, YADA-MINAMI 5-CHOME, HIGASHI-KU, NAGOYA, JAPAN

## TECHNICAL BULLETIN

**[Issue No.]** T40-0003

**[Page]** 3/3

**[Title]** Cautions on the leap day (Basic model QCPU)

**[Date of Issue]** Oct., '04

**[Relevant Models]** Q00JCPU, Q00CPU, Q01CPU

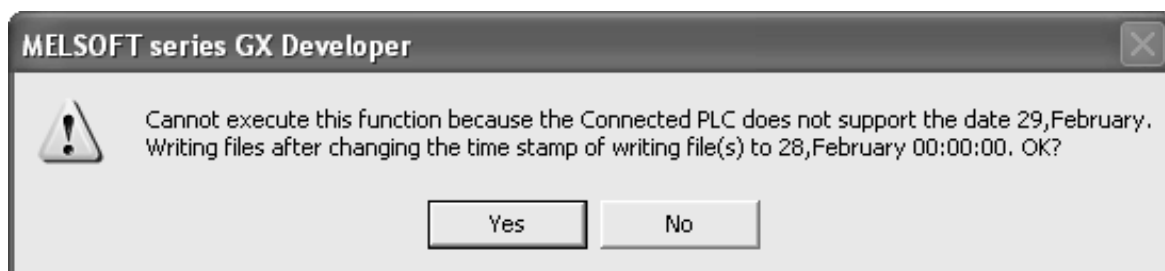
### 3. Corrective Actions

Take the following corrective actions.

- Corrective actions for case No.1 to 4 in Table 1:  
Change the PC's date to other than "February, 29<sup>th</sup>".

In the case No.1, the following message appears when the conditions 1) to 3) below are overlapped.  
In this case, select "Yes (Y)" to enable the file date to be changed to "February, 28<sup>th</sup>, 00:00:00" and automatically written to the Basic model QCPU.

- 1) GX Developer Version 8.20W or later is used.
- 2) PC's date is "February, 29<sup>th</sup>", leap day.
- 3) The write destination is the Basic model QCPU with first five digits of serial No. 06031 or earlier.



- Corrective actions for case No.5 to 7 in Table 1:  
Change the CPU's date to other than "February, 29<sup>th</sup>".
- Corrective actions for case No.8 in Table 1:  
Change the date specified using the command to other than "February, 29<sup>th</sup>".

Please contact your local Mitsubishi service center or representative, for other questions and unclear points.