



Mitsubishi Graphic Operation Terminal

2001 No.160E

**NEW PRODUCT RELEASE**

Graphic Operation Terminal  
**900**  
series

**GOT-A900 Series**

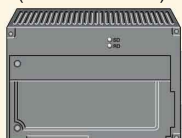
Announcement of the Compatibility with Ethernet Connection

**NEW**

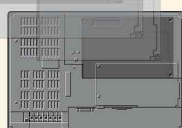
**Ethernet communication modul**  
(A9GT-J71E71-T)

**With a GOT unit**

Ethernet communication module is available to realize Ethernet connection with a GOT unit.



GOT unit (front)



GOT unit (back)

**Version up**

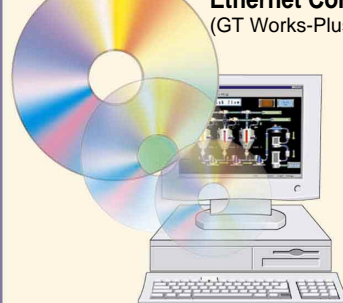
**GT SoftGOT**  
**Compatibility with**  
**Ethernet Connection**  
(GT Works-Plus)

**With a PC****< Ethernet Connection >**

GT SoftGOT is compatible with Ethernet connection.

**<E-mail function>**

It sends Alarm via e-mail.



Personal computer

Personal computer (GT SoftGOT)

**Ethernet connection provides the remote maintenance of the production site from the office.**

It displays the same screen on an office PC as on the PC at the site.

**Office****Production Site****Hub****Ethernet**

GOT-A900 Series



PLC

**E-mail function**

- It sends alarm occurrence and recovery via e-mail.
- It sends alarm history data, recipe data and screen images at regular intervals via e-mail.

**Remote site**

•Personal computer



•Mobile phone

**[Specification of the A9GT-J71E71-T]**

Item	Specification
Transmission specification	Data transmission speed
	10Mbps
	Transmission method
	Base band
	Maximum node to mode distance
	4000m (1312ft)
	Maximum segment length
	100m (328.1ft)
	Maximum number of nodes
	1024unit/all hubs (12unit)
Internal consumed current (DC5V)[mA]	50
External dimensions [mm] (inch)	149(5.87)(W) x 99(3.90)(H) x 30.2(1.19)(D)
Weight [g] (lb)	160(0.35)

**GOT-A900 Series compatible with Ethernet connection**

A985GOT(-V), A975GOT, A970GOT, A960GOT, A956WGOT, A956GOT, GT SoftGOT

**Ethernet modules that can be connected**

- MELSEC-A Series compatible E71 .....AJ71E71-S3, A1SJ71E71-B2-S3, A1SJ71E71-B5-S3
- MELSEC-QnA Series compatible E71 .....AJ71QE71, A1SJ71QE71-B2, AJ71QE71-B5, A1SJ71QE71-B5
- MELSEC-Q Series compatible E71 .....QJ71E71, QJ71E71-B2, QJ71E71-100

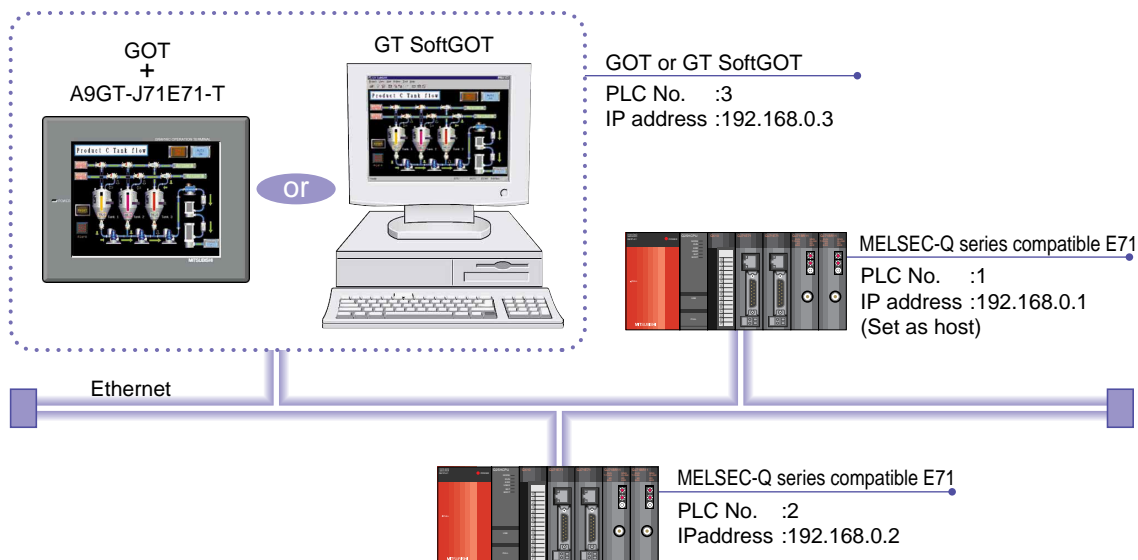
**[Specification of the related devices]**

Use the connection cable and the hub which meet the IEEE802.3 10BASE-T standard.

Item	Specification
Cable	Non-shielded twisted pair wire (category3(4,5))
Connector	RJ45jack
Hub	10Mbps hub

## Example of Ethernet connection setting <Connection with a MELSEC-Q Series compatible E71>

GOT/GT SoftGOT can monitor an Ethernet module only with the PLC No. and the IP address.

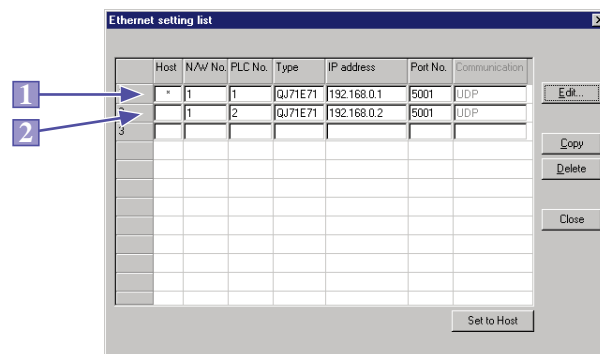


### How to set the PLC No. and the IP address

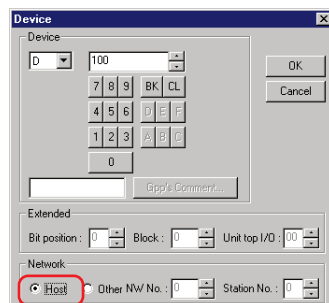
Set the PLC No., IP address, etc., of the Ethernet module on "Ethernet setting list" screen of GT Designer.

One Ethernet module must be set as the host then.

The setting of the devices monitored, depends on whether the Ethernet module is the host or not.

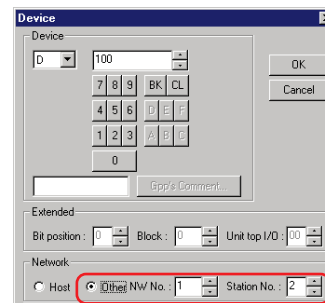


#### 1 Setting the devices of a host Ethernet module



Specify the network setting to "Host" on "Device setting" screen of GT Designer, for monitoring the Ethernet module set as the host.

#### 2 Setting the devices of a non-host module.



Specify the network setting to "Other" on "Device setting" screen of GT Designer, for monitoring the Ethernet module that is not set as the host.

\*1 The PC number and the IP address on "Ethernet setting list" screen should be the same values set in the Parameter setting using GX Developer.

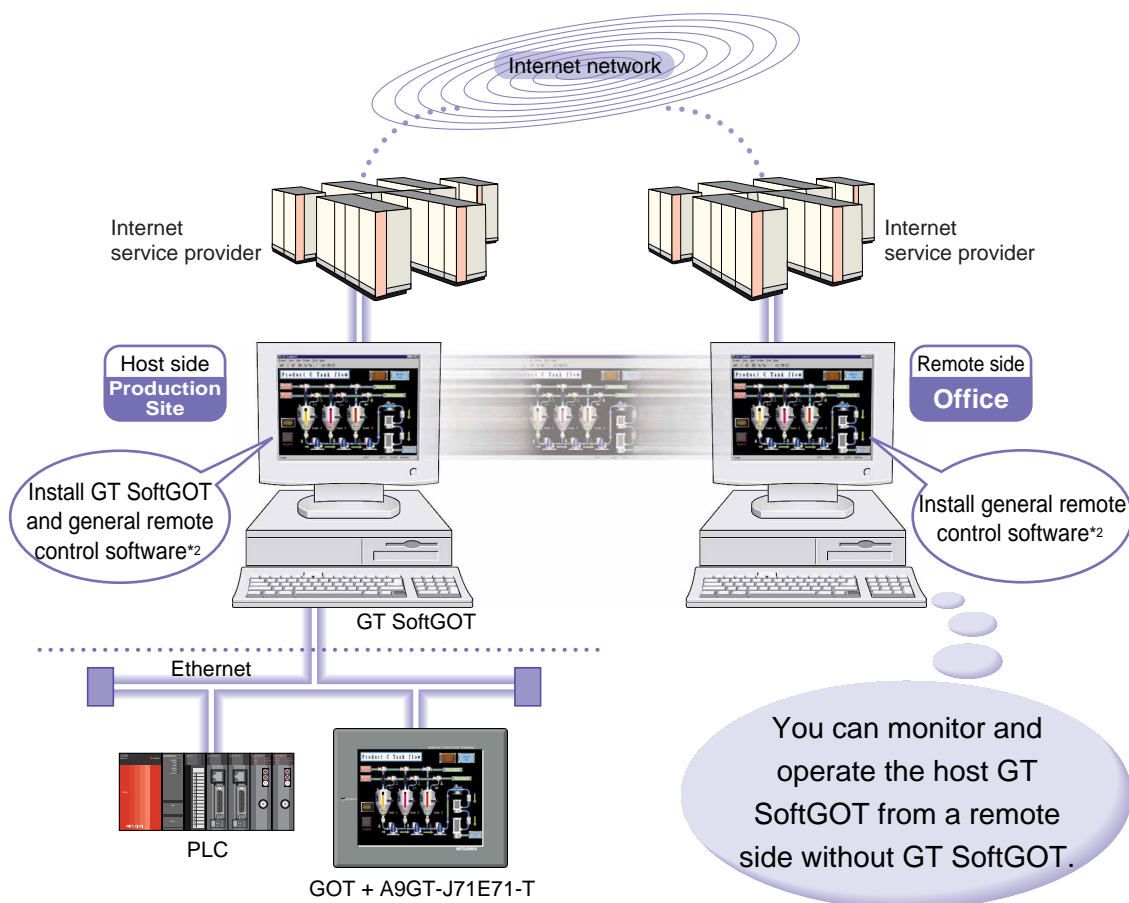
\*2 The Ethernet setting of GOT/GT SoftGOT itself can be configured in the GOT/GT SoftGOT (GOT: Use the utility function of the GOT itself, GT SoftGOT: Set Options of GT SoftGOT). (Monitor screen data does not include the settings of the main unit of the GOT.)

You can achieve the following using our new product

## Remote maintenance of the production site is enabled from the office by remote operation!

A remote PC can operate GT SoftGOT on the host side by using general remote control software that performs file transfer and remote operation of applications. This allows you to obtain the site information in the office without going to a remote factory or production site.

### Example of remote control via the Internet \*1



### Operation examples

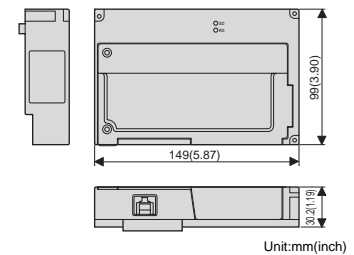
1. You can start, monitor and operate the host GT SoftGOT from a remote side. (The remote side does not need a GT SoftGOT license.)
2. You can edit the monitor screen data from a remote side by starting GT Designer on the host side. Therefore, the monitor screen data of GT SoftGOT can be modified without going to the remote side.
3. You can immediately monitor GT SoftGOT from a remote side in a trouble at the host, so it is easy to check the status.  
By using the e-mail function of GT SoftGOT at the host, it sends a message indicating alarm occurrence to a remote side.

\*1 Remote operation can be performed using public line, mobile phones, or mobile cards.

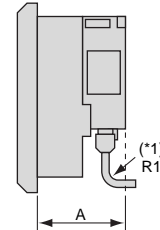
\*2 The remote control software Mitsubishi confirmed the operation with is pcAnywhere 10.0. Resetting of firewall may be required depending on the connection pattern.

	Item	Description
Upgrade of maintenance functions	Enhanced multiple PLC monitoring	PLCs other than the one controlling the GOT can be monitored, when using multiple PLCs with the ladder monitor/system monitor/special module monitor.
	7-inch wide screen ladder monitor	The A956WGOT can use the QCPU ladder monitor function. (The A956WGOT complies with only the ladder monitor function with the QCPU (Q mode)).
	Larger ladder monitor display	The sequence program display area of the QCPU ladder monitor function is enlarged in the A985GOT (-V). (8-digit display changes to 15-digit display.)
	System monitoring with products of other manufacturers	GOT internal devices (GD/GB/GS) can be monitored using the PLCs of other companies.
Upgrade of connection patterns	Enhanced special module monitor with multiple PLCs	The control PLC of each module is displayed on the system configuration screen during multiple PLC connection.
	Compatibility with QUTE connection (GOT/GT SoftGOT)	Connection with the Q00J/Q00/Q01CPU is enabled.
	Compatibility with Ethernet connection (GOT)	Ethernet connection is enabled. (Complied with GT Works Version 5, Version K (products shipped in February, 2001).)
	Addition of other PLC connection (GOT)	Connection with PLC MEWNET-FP Series (Matsushita) is enabled. Connection with PLC MP940 and CP-9300MS compatible with CP-9300MC (Yasukawa), is enabled.
Upgrade of other functions	Support for G4 connection (GOT)	The QCPU (master station/local station) can be monitored through the AJ65BT -G4-S3-type peripheral connection module integrated into the CC-Link system.
	Auto setting of decimal point display	"Adjust decimal point range" setting is added to the numerical display function. If "Adjust decimal point range" is checked, the decimal point can be displayed easily without setting data calculation.
	Use of various display patterns	With the lamp/part (part movement)/numerical display function, display properties can be changed according to the status of specified devices (ON/OFF/device value).
	Any recipe file name	Any recipe file names can be set (maximum eight alphanumeric characters).
	Partial display of comments	It is possible to change the first line and display from the new line for creating a multi-line comment.
	Detailed setting possible for each screen	The key window/cursor display settings and key window screen number that were set for each project can now be set for each screen.
	Select printing color	The hard copy function now allows the color selection of 256 colors, 16 colors or black & white for output to the printer.
	Alarm history data editing	Alarm history data can be saved on a PC card in CSV format using the alarm history display function. Alarm history data can be checked and edited using applications such as a spreadsheet program for PCs. (Complied with GT Works Version 5/ GT Designer Version 5, Version F (products shipped in November, 2000).)

## Out line dimension drawing of the A9GT-J71E71-T



## Depth dimensions for the installation of the A9GT-J71E71-T



\*1 The bending radius (R1: standard value) in the proximity of connector should be at least 4 times the external from of the cable.

GOT model to be installed	Dimension of section A (mm)(inch)
A985GOT/A960GOT	73.2(2.88)
A975GOT/A970GOT	70.2(2.76)
A956WGOT	96.0(3.78)
A956GOT-TBD	89.2(3.51)
A956GOT-SBD/LBD	81.2(3.20)

## Product configuration

Item	Type
A9GT-J71E71-T type Ethernet communication module	A9GT-J71E71-T
GT Works-Plus (GT Works + License key for GT SoftGOT)	SW5D5C-GTWORKS-SE
GT Works (GT Designer + GT Simulator + GT SoftGOT)	SW5D5C-GTWORKS-E
License key for GT SoftGOT	A9GTSOFT-LKEY-P

## Manual

Manual name	Manual shipping from	IB/SH No.	Type code
A9GT-J71E71-T type Ethernet communication modul User's Manual (Hardware)	Enclosed with product	IB-0800199	(13JT61)
GT Works Version5/GT Designer Version5 Reference Manual	Optional *1	SH-080117	(13JF95)
GOT-A900 Series Operating Manual (GT Works Version5/GT Designer Version5 compatible Extended•Option Functions Manual)	Optional *1	SH-080118	(13JU08)
GOT-A900 Series User's Manual (GT Works Version5/GT Designer Version5 compatible Connection System Manual)	Optional *1	SH-080119	(13JR20)
GT SoftGOT Version5 Operating Manual	Optional *1	SH-080156	(13JU12)

\*1 GT Works includes the electrical data of the manual in PDF format. (GT Works also includes the program required to view PDF-formatted manuals on a PC (Acrobat Reader).)

Microsoft®, Windows® is a registered trademark of Microsoft Corporation, U.S. in the United States and other countries.  
Ethernet is a registered trademark of Xerox Corporation, U.S.  
Adobe, Acrobat is a registered trademark of Adobe Systems Incorporated.  
Other business or product names mentioned herein are trademark or registered trademark of each company.

Country/Region	Sales office	Tel/Fax	China	Ryoden International Shanghai Ltd.	Tel : 86-21-6475-3228 Fax : 86-21-6484-6996
U.S.A	Mitsubishi Electric Automation Inc. 500 Corporate Woods Parkway Vernon Hills, IL 60061	Tel : 1-847-478-2100 Fax : 1-847-478-0328		3F Block5 Building Automation Instrumentation Plaza 103 Cao Bao Rd. Shanghai 200233 China	
Brazil	MELCO-TEC Rep. Com.e Assessoria Tecnica Ltda. Av. Rio Branco, 123-15, and S/1507, Rio de Janeiro, RJ CEP 20040-005, Brazil	Tel : 55-21-221-8343 Fax : 55-21-221-9388	Taiwan	Setsuyo Enterprise Co., Ltd. 6F., No.105 Wu-Kung 3rd.RD, Wu-Ku Hsiang, Taipei Hsine, Taiwan R.O.C.	Tel : 886-2-2299-2499 Fax : 886-2-2299-2509
Germany	Mitsubishi Electric Europe B.V. UK Branch Gothaer Strasse 8 D-40880 Ratingen, GERMANY	Tel : 49-2102-486-0 Fax : 49-2102-486-717	Korea	HAN NEUNG TECHNO CO., LTD. 1F Dong Seo Game Channel Bldg., 660-11, Deungchon-dong Gangseok-ku, Seoul, Korea	Tel : 82-2-3668-6567 Fax : 82-2-3664-8335
U.K	Mitsubishi Electric Europe B.V. UK Branch Travellers Lane, Hatfield, Herts., AL10 8XB, UK	Tel : 44-1707-276100 Fax : 44-1707-278695	Singapore	Mitsubishi Electric Asia Pte, Ltd. 307 Alexandra Road #05-01/02, Mitsubishi Electric Bulding Singapore 159943	Tel : 65-473-2480 Fax : 65-476-7439
Italy	Mitsubishi Electric Europe B.V. Italian Branch Centro Dir. Colleoni, Pal. Perseo - Ingr.2 Via Paracelso 12, 20041 Agrate B., Milano, Italy	Tel : 39-039-6053301 Fax : 39-039-6053312	Thailand	F. A. Tech Co., Ltd. 898/28, 29, 30 S.V. City Building, Office Tower 2, Floor 17-18 Rama 3 Road, Bangkokpang, Yannawa, Bangkok 10120	Tel : 66-2-682-6522 Fax : 66-2-682-6020
Spain	Mitsubishi Electric Europe B.V. Spanish Branch Carretera de Rubi 76-80 08190-Sant Cugat del Valles, Barcelona, Spain	Tel : 34-935-653135 Fax : 34-935-891579	Indonesia	P.T. Autoteknindo SUMBER MAKMUR Jl. Muara Karang Selatan Blok a Utara No.1 Kav. No.11 Kawasan Industri/Pergudangan Jakarta-Utara 14440	Tel : 62-21-663-0833 Fax : 62-21-663-0832
South Africa	MSA Manufacturing (Pty) Ltd. P O Box 39733 Bramley 201 8 Johannesburg, South Africa	Tel : 27-11-444-8080 Fax : 27-11-444-8304	India	Messung Systems Put, Ltd. Electronic Sadan NO:111 Unit No15, M.I.D.C BHOSARI, PUNE-411026, India	Tel : 91-20-7128927 Fax : 91-20-7128108
Hong Kong	Ryoden International Ltd. 10th Floor, Manulife Tower, 169 Electric Road, North Point, HongKong	Tel : 852-2887-8870 Fax : 852-2887-7984	Australia	Mitsubishi Electric Australia Pty. Ltd. 348 Victoria Road, Postal Bag, No. 2, Rydalmere, N.S.W 2116, Australia	Tel : 61-2-9684-7777 Fax : 61-2-9684-7245

**MITSUBISHI ELECTRIC CORPORATION**  
HEAD OFFICE : MITSUBISHI DENKI BLDG MARUNOUCHI TOKYO 100-8310 TELEX : J24532 CABLE MELCO TOKYO

Specifications subject to change without notice.  
Printed in Japan on recycled paper.