

## Advanced drive control connectivity

Graphic Operation Terminal  
**GOT2000**

Use high functionality of drives on GOT2000

Feature 1

MITSUBISHI SERVO AMPLIFIERS & MOTORS  
× **MELSERVO-J4**

### GOT2000 offers more efficiency in startup, adjustment, and maintenance of servo amplifiers

Adjust parameters and diagnose the servo amplifier life on the GOT2000 without a PC. GOT2000 offers powerful FA solutions with MELSERVO-J4 to make the production facilities easy to use and provide additional value to the system.

(GT27, GT25, GT21 only)



For the details, please refer to the GOT2000 and Drive Control Interactive Solution (L(NA)08335ENG).



Connection samples available!

#### MR Configurator2 functionality is in the GOT2000 sample screens!

Ver. 1.126G or later

##### Servo amplifier MR-J4-A-(RJ) RS-422 connection sample (VGA)

- One-touch tuning function
- Tuning function
- Power monitor function
- Machine diagnosis function
- Amplifier life diagnosis function

Sample screen data is included in GT Works3.

How to use samples

- ① Select [Project]→[New]→[Utilize Data] in GT Works3
- ② Enter the keyword "J4" in the Utilize Data (Project) dialog
- ③ Just select the project you want to use!



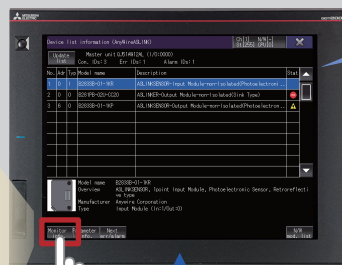
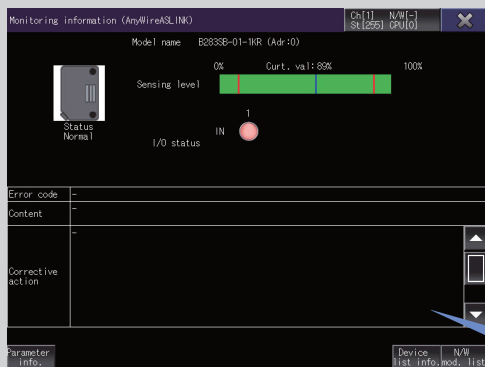
Various connection/screen samples are available!

### Start, run, and maintain the iQSS-compatible devices without a PC!

Ver. 1.126G or later

iQSS utility function

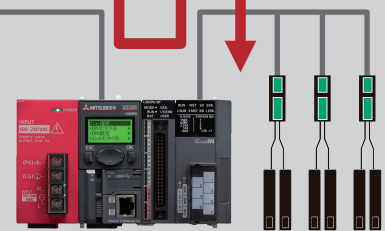
#### Monitoring information screen (AnyWireASLINK)



In the iQSS-compatible device list, check the model name and the error status of the sensor.

Connect a data storage that stores the iQSS-compatible device information

The current value, error detail information, error cause, and how to fix it are shown.



iQSS-compatible devices (AnyWireASLINK)  
124 models supported!

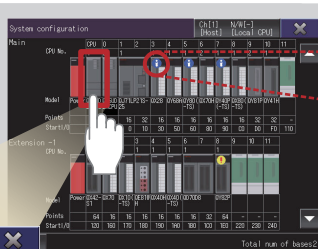
Check the iQSS-compatible device (AnyWireASLINK) status and parameter information on the GOT without a PC.

Just enable the iQSS Utility function to automatically generate monitoring screens. There is no need to create monitoring screens for every sensor and thus you can reduce time for startup, operation, and maintenance of the sensor system. (GT27, GT25 only)

## Easy to start maintenance functions

Ver.1.126G or later

System launcher function



Icons show the module status. You can check the module with an error at a glance.

- PLC diagnostics
- Device monitor
- Sequence program monitor (Ladder)
- Backup/Restore
- iQSS utility

Go to PC Information screen of Intelligent Module Monitor

Go to Sequence Program Monitor

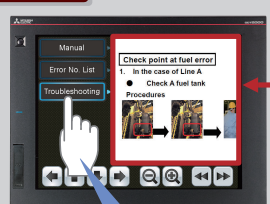
Directly start the maintenance function from the list

A graphical system configuration diagram indicates module statuses. When you touch a module the extended function list is shown and you can carry out maintenance work efficiently. (GT27, GT25 only)

## Document ID indirect setting

Ver.1.126G or later

Document display function



Switch

Switch

Just switch document IDs with a touch switch or a numerical input

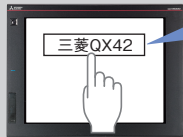
Displaying documents is now easier than ever

You can switch displayed documents on a single screen. (GT27, GT25 only)

## Unicode for various functions

Ver.1.126G or later

Unicode support



Display/enter text using Unicode

Unicode	
D10	4E09h (三)
D11	83F1h (菱)
D12	0051h (Q)
D13	0058h (X)
D14	0034h (4)
D15	0032h (2)

Unicode text enables global support!

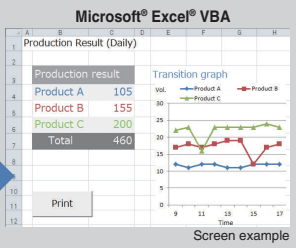
Unicode text is now supported in more functions. (All models)  
 <Supported functions> Logging, Recipe, Text Display/Input, Script (file operation/string operation function), Key code Input of Touch Switch/Key Code Switch, Key Window for Text, Import/export format of User Alarm Observation setting

## Microsoft® Excel® VBA

Ver.1.126G or later

GT SoftGOT2000

Internal device interface function



Internal devices Read/Write

Microsoft® Excel® VBA can access internal devices!

In the user-created applications, Microsoft® Excel® VBA can be used to read/write internal devices of GT SoftGOT2000. Sample programs are available.

<Added development environment> Microsoft® Excel® VBA 2007, 2010, 2013

## Other new functions

Ver.1.126G or later

- The following connections and controllers are now supported.
  - All models
    - MELSEC iQ-F series FX5U, FX5UC
  - GT27, GT25, GT21
    - Mitsubishi Electric Corporation MELSEC iQ-R series R12CCPU-V
    - Mitsubishi Electric Corporation MELSERVO-J4 series linear servo motor/DD motor setting parameters (PL) can be monitored.
  - GT21
    - Yaskawa Electric Corporation programmable controller (serial connection)
    - \* For supported models, please refer to connection manual.
    - IAI Corporation robot controller
    - MODBUS/TCP connection
  - GT SoftGOT2000
    - Motion controller CPU (MELSEC iQ-R series)
    - Connection with GX Simulator3. MELSEC iQ-R series can be connected as a virtual controller.
    - \* GX Works3 Ver.1.007H or later is required
- The following functions are now supported.
  - Barcode function, RFID function
    - RS-422/485 connection (All models)
  - USB keyboard function
    - By connecting a barcode reader or RFID controller by USB, key codes can be sent to objects such as text input or numerical input. (GT27, GT25 only)
  - Slider function
    - Newly supported by GT21. \*Also supported on GT27, GT25
  - File transfer function (FTP client)
    - MELSEC iQ-R, MELSEC-Q, MELSEC-L can be set as a destination server.
    - \* Ethernet port built in CPU only (GT27, GT25 only)
  - Backup/Restore function
    - The data can be restored while holding file registers. (GT27, GT25 only)
  - Buffer memory unit No. switching
    - When connecting with MELSEC iQ-F series, buffer memory unit No. can be switched. (All models)
  - Target controller setting
    - Specify the monitoring target controller to a touch switch to quickly monitor the specified controller. (All models)
    - <Supported function> Backup/Restore function, Device Monitor function, Network Monitor function, iQSS Utility function, etc.
  - FA transparent function
    - CW Configurator (All models)
    - NC Configurator2 (GT27, GT25 only)
  - GT Works3
    - MT Works2 global labels (All models) \*Ver.1.123D or later
    - Display Type (Individual, Range) selection in Device Batch Edit (All models)
    - Device Monitor in the Simulator function (All models)

The release date varies depending on the product and your region. For details, please contact your local sales office.

# MITSUBISHI ELECTRIC CORPORATION

HEAD OFFICE: TOKYO BUILDING, 2-7-3, MARUNOUCHI, CHIYODA-KU, TOKYO 100-8310, JAPAN  
 NAGOYA WORKS: 1-14, YADA-MINAMI 5, HIGASHI-KU, NAGOYA, JAPAN

Country/Region Sales office	
USA	+1-847-478-2100
Brazil	+55-11-4689-3000
Mexico	+52-55-3067-7500
Germany	+49-2102-486-0
UK	+44-1707-28-8780
Italy	+39-039-60531
Spain	+34-935-65-3131
France	+33-1-55-68-55-68
Czech	+420-251-551-470
Turkey	+90-216-526-3990
Poland	+48-12-630-47-00

Russia	+7-812-633-3497
South Africa	+27-11-658-8100
China	+86-21-2322-3030
Taiwan	+886-2-2299-2499
Korea	+82-2-3660-9530
Singapore	+65-6473-2308
Thailand	+66-2682-6522 to 31
Indonesia	+62-21-3192-6461
Vietnam	+84-8-3910-5945
India	+91-20-2710-2000
Australia	+61-2-9684-7777

The actual color may differ slightly from the pictures in this catalog. The actual display may differ from what are shown on GOT screen images.

### ⚠ Precautions for safe use

To use the products given in this document, always read the related manuals before starting to use them.

### Trademarks and registered trademarks

- Microsoft, Windows, Excel are registered trademarks or trademarks of Microsoft Corporation in the United States, Japan and other countries.
- ETHERNET is a registered trademark of Xerox Corp.
- MODBUS is a registered trademark of SCHNEIDER ELECTRIC USA, INC.
- SD and SDHC Logos are registered trademarks or trademarks of SD-3C, LLC.
- VNC is a registered trademark of RealVNC Ltd. in the United States and other countries.
- Unicode and the Unicode Logo are registered trademarks of Unicode, Inc. in the United States and other countries.
- Other product and company names are either trademarks or registered trademarks of their respective owners.