

Sales and Service

Change in Packing Box Rating Plate, Packing Box Specifications, and Product Model Name Print of MR-RB Optional Regeneration Unit

Thank you for your continued patronage of the Mitsubishi general-purpose AC servo and FA products. To enhance the product management, improve workability for the waste separation, and standardize the specifications, the packing box rating plate, the packing box specifications, and the product model name print will be changed as shown below. We ask for your understanding in this matter.

1. Target Models

- | | |
|--|----------------------------------|
| (1) Change in the packing box rating plate | MR-RB032/12/30/31/32/34/50/51/54 |
| (2) Change in the packing box specifications | MR-RB30/31/32/34/50/51/54 |
| (3) Change in the product model name print | MR-RB013/033 |

2. Purpose

To enhance the product management, improve workability for the waste separation, and standardize the specifications.

3. Details of Change

- (1) Change in the packing box rating plate
To enhance the product management, the stamp will be changed to the label with barcodes.



Before (stamp)

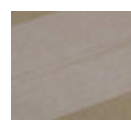


After (label)

- (2) Change in the packing box specifications
To improve workability for the waste separation, the staple will be changed to the kraft tape.

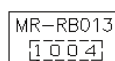


Before (staple)



After (kraft tape)

- (3) Change in the product model name print
To standardize the specifications, the product rating plate will be changed.



Before



After



Manufacture date

4. Schedule

These changes will be made from the August 2010 production. Because of inventories, old and new products may exist in the distribution stage. We ask for your understanding in this matter.

Date of issue	July 2010	Title	Change in Packing Box Rating Plate, Packing Box Specifications, and Product Model Name Print of MR-RB Optional Regeneration Unit	Mitsubishi Electric Corp., Nagoya Works 5-1-14 Yada-minami, Higashi-ku, Nagoya 461-8670 Tel.: +81 (52) 721-2111 Main line
----------------------	-----------	--------------	--	---