

## Sales and Service

### Production Discontinuation of Simple Motion Module LD77MH4/LD77MH16

Thank you for your continued patronage of the Mitsubishi servo system controller and FA products. For the MELSEC-L series Simple Motion module LD77MH (LD77MH4/LD77MH16), which has been used for many years, we have started selling the successor model LD77MS since the last day of April 2013. LD77MS is compatible with the peripheral S/W, and projects and sequence programs created by customers which are used for the conventional model LD77MH. Accordingly, we will discontinue production of the conventional LD77MH. We ask for your understanding in this matter.

#### 1. Production Discontinuation Models

LD77MH4, LD77MH16

#### 2. Replacement Models

LD77MS4, LD77MS16

#### 3. Production Discontinuation

The final production: the last day of September 2015.

#### 4. Difference between LD77MH and LD77MS

Table 1. Difference between LD77MH and LD77MS

		Conventional model	Replacement model
Model		LD77MH	LD77MS
Dimensions	Width	45.0 mm	
	Depth	95.0 mm	
	Height	90.0 mm	
Current consumption		LD77MH4/LD77MS4: 0.55 [A], LD77MH16/LD77MS16: 0.70 [A]	
Compatible servo system network		SSCNET III (50 Mbps)	SSCNET III (50 Mbps) SSCNET III/H (150 Mbps)
CE/UL/KC		Conformed	

Note. The projects created by customers can be converted using the peripheral S/W for easy migration.  
(Refer to 7. Method for Project Migration from LD77MH to LD77MS.)

#### 5. Spare Parts Supply

We will supply only LD77MS4 and LD77MS16 parts as spare parts.

#### 6. Repair Schedule

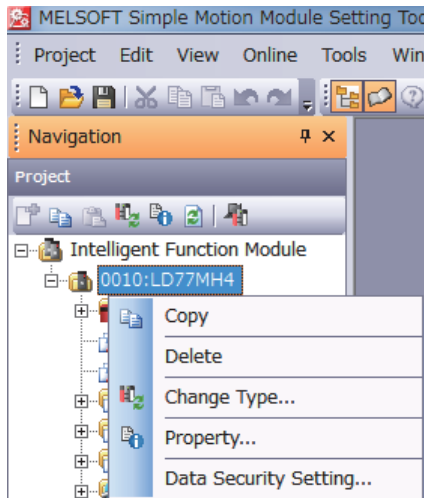
The repair will be accepted until the last day of September 2022 (for seven years after the production discontinuation).

<b>Date of issue</b>	September 2014	<b>Title</b>	Production Discontinuation of Simple Motion Module LD77MH4/LD77MH16	Mitsubishi Electric Corp., Nagoya Works 5-1-14 Yada-minami, Higashi-ku, Nagoya 461-8670 Tel.: +81 (52) 721-2111 Main line
----------------------	----------------	--------------	---	---

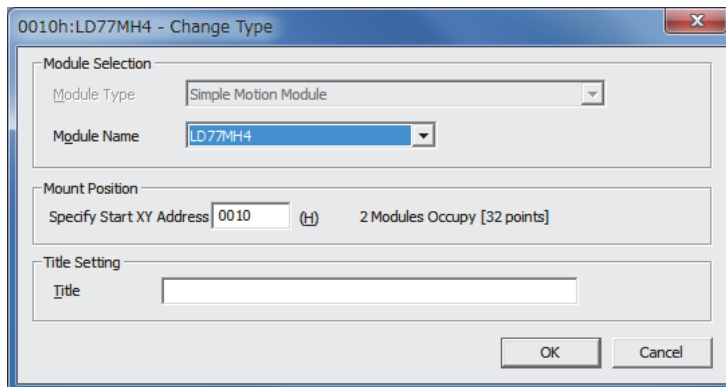
## 7. Method for Project Migration from LD77MH to LD77MS

The followings are the steps for project migration with the Simple Motion setting tool.

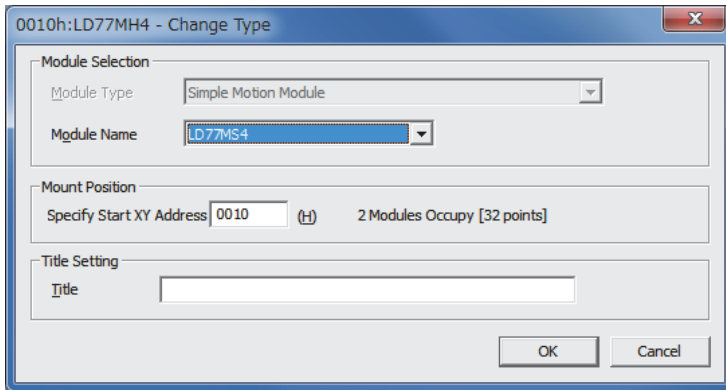
- (1) Open the LD77MH project.
- (2) Select the LD77MH project on the project window and select "Change Type" from the shortcut menu.



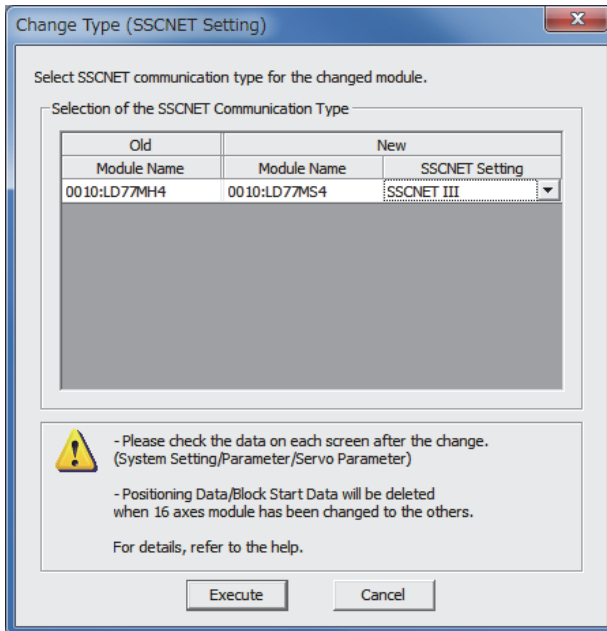
- (3) The change type window appears.



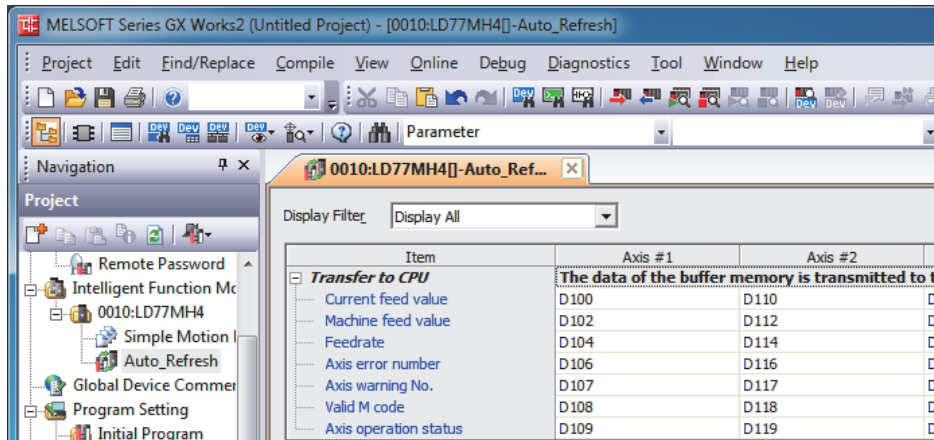
(4) Select LD77MS for "Module Name" on the change type window, then click the "OK" button.



(5) Then, on the change type (SSCNET setting) window, select an item for "SSCNET Setting" depending on the servo amplifier after change and click the "Execute" button.



- (6) Save the LD77MS project after change.
- (7) Save the auto refresh setting on the GX Works2 screen.



- (8) On the list of the GX Works2 intelligent function modules, delete the LD77MH module and add the LD77MS module.
- (9) Return the auto refresh content back to the content of LD77MH.

The process is completed.