

# TECHNICAL BULLETIN

**[Issue No.]** GOT-A-0030

**[Page]** 1/3

**[Title]** Change of Liquid Crystal and Backlight of GOT (GT1575-VTBA and GT1575-VTBD) for Improving Display Quality, and Precautions for Combination of GOT (GT1575-VTBA and GT1575-VTBD) and Backlight for Replacement

**[Date of Issue]** July 2010

**[Relevant Models]** GT1575-VTBA and GT1575-VTBD

Thank you for your continued support of Mitsubishi Graphic Operation Terminal (GOT).

To improve the screen display quality, the liquid crystal and backlight of the GT1575-VTBA and GT1575-VTBD have been changed.

Due to the change of the liquid crystal and backlight, the color of the GOT display screen has been slightly different.

In addition, due to the change of the backlight, the intensity of liquid crystal has been changed depending on the combination of the GOT and backlight for the replacement.

**1. Improvements**

The liquid crystal and backlight of the GT1575-VTBA and GT1575-VTBD have been improved for better visibility.

**2. Applicable models**

For the following hardware versions of the GOT, the liquid crystals and backlights have been changed.

Model	Hardware version
GT1575-VTBA	H or later
GT1575-VTBD	Q or later

For the confirmation method of the GOT hardware version, refer to 4.

**3. Precautions for the change of the liquid crystal and backlight of the GOT**

Due to the change of the liquid crystal and backlight, the color of the GOT display screen has been slightly different.

Due to the change of the backlight, the intensity of liquid crystal has been changed as shown below depending on the combination of the GOT and backlight for the replacement.

○: Appropriate   □: Not appropriate (refer to \*)

Model	Hardware version	Appropriate backlight (GT15-70VLTT)	
		Old (No production number marked)	New (Production number marked)
GT1575-VTBA	G or earlier(Old)	○	□*1
	H or later(New)	□*2	○
GT1575-VTBD	P or earlier(Old)	○	□*1
	Q or later(New)	□*2	○

\*1: When a new backlight (production number marked) is attached to the GOT with an old liquid crystal  
The intensity of old liquid crystal of the GOT with the new backlight (production number marked) is slightly higher than that of the GOT with the old backlight (no production number marked).

\*2: When an old backlight (no production number marked) is attached to the GOT with a new liquid crystal  
The intensity of new liquid crystal of the GOT with the old backlight (no production number marked) is slightly lower than that of the GOT with the new backlight (production number marked).

# TECHNICAL BULLETIN

[Issue No.] GOT-A-0030

[Page] 2/3

[Title] Change of Liquid Crystal and Backlight of GOT (GT1575-VTBA and GT1575-VTBD) for Improving Display Quality, and Precautions for Combination of GOT (GT1575-VTBA and GT1575-VTBD) and Backlight for Replacement

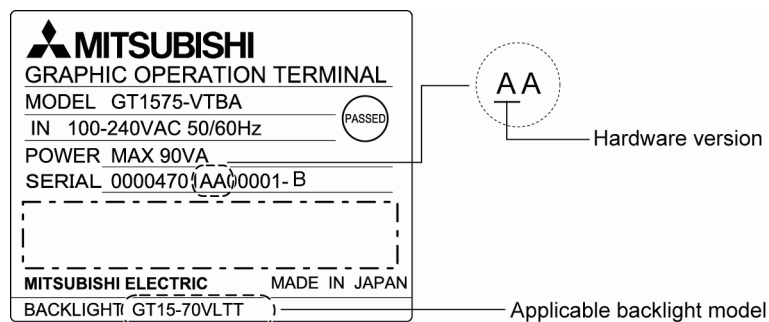
[Date of Issue] July 2010

[Relevant Models] GT1575-VTBA and GT1575-VTBD

#### 4. Confirmation method of the hardware version of the GT1575-VTBA and GT1575-VTBD

The following example shows the case of hardware version "A".

Rating plate (on the GOT rear face)



#### 5. Identification method of old and new backlights (GT15-70VLTT)

To identify the old and new backlights, check whether the production number is marked or not.

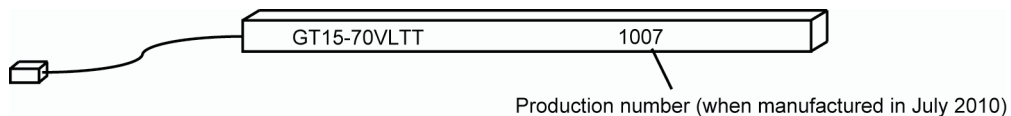
<Old backlight>

The production number is not marked on the old backlight.



<New backlight>

The production number is marked on the new backlight.



## **TECHNICAL BULLETIN**

**[Issue No.]** GOT-A-0030

**[Page]** 3/3

**[Title]** Change of Liquid Crystal and Backlight of GOT (GT1575-VTBA and GT1575-VTBD) for Improving Display Quality, and Precautions for Combination of GOT (GT1575-VTBA and GT1575-VTBD) and Backlight for Replacement

**[Date of Issue]** July 2010

**[Relevant Models]** GT1575-VTBA and GT1575-VTBD

Version	Print date	Revision
*	July 2010	• First edition