

TECHNICAL BULLETIN

[Issue No.] T10-0030

[Title] Precautions on the monitor data compatibility

[Relevant Models] GOT-A900 series

[Page] 1/5

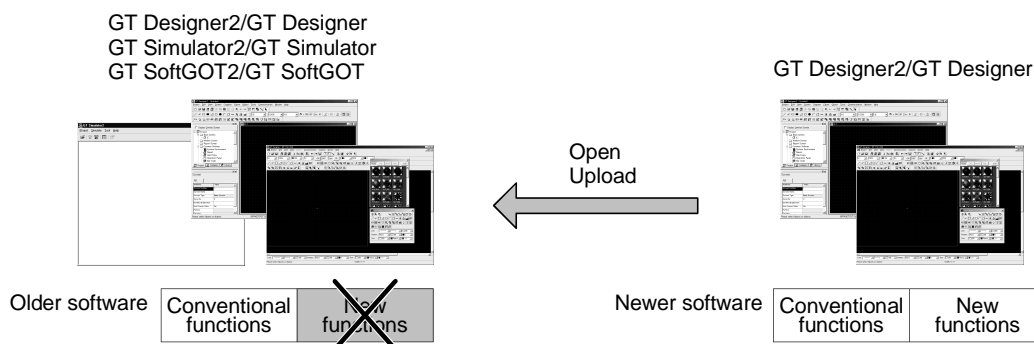
[Date of Issue] Oct., '03

Thank you for your continued support of Mitsubishi Graphic Operation Terminal GOT series.

This technical bulletin provides the precautions for using monitor data.

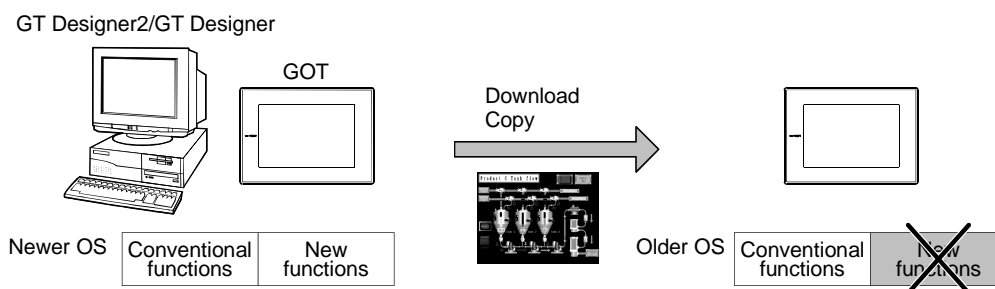
Pay attention to the precautions outlined in this bulletin when handling monitor data.

- (1) When opening/uploading monitor data, make sure to use the same or newer software version (GT Designer2/GT Designer, GT Simulator2/GT Simulator, GT SoftGOT2/GT SoftGOT) than the one used to create the monitor data. When the older version is used, some problems may occur such as file is not able to be opened and/or some functions/settings are invalid.



- (2) When downloading/copying monitor data into a GOT, make sure that the OS version installed in the target GOT is the same or newer than the one in the source GOT/software.

If the OS in the target GOT is older, some functions (unsupported by the OS) are invalid.



The following shows the points to check by subject when using monitor data.

This technical bulletin provides the precautions on the software version compatibility only. When using functions depending on the GOT ROM_BIOS, the corresponding ROM_BIOS version must be installed in the GOT. For ROM_BIOS-dependant functions, refer to GT Designer2 Version□ Operating Manual.

MITSUBISHI ELECTRIC CORPORATION

HEAD OFFICE : 1-8-12, OFFICE TOWER Z 14F HARUMI CHUO-KU 104-6212, JAPAN
NAGOYA WORKS : 1-14, YADA-MINAMI 5-CHOME, HIGASHI-KU, NAGOYA, JAPAN

TECHNICAL BULLETIN

[Issue No.] T10-0030

[Page] 2/5

[Title] Precautions on the monitor data compatibility

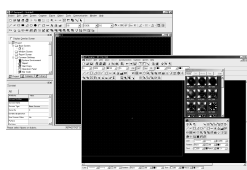
[Date of Issue] Oct., '03

[Relevant Models] GOT-A900 series

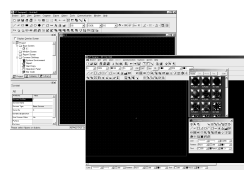
1. Opening monitor data

(1) POINT

No problem occurs when the software version is the same or newer than the one used to create the monitor data.



Software version used to open the data



Software version used to create the data

(2) Precautions

When the monitor data is opened with the same or older software version than the one used to create it, some functions/ settings are invalid due to version incompatibility.

The following table shows the compatibility between the software versions.

Software used to open monitor data		Software used to create monitor data		
		GT Designer2	GT Designer	
		Version1	Version5.13P or later	Version1.00A to Version5.10L
GT Designer2	Version1	●	●	●
GT Designer	Version5.13P or later	-	▲	▲
	Version1.00A to Version5.10L	-	△	△

- : Compatible.
- ▲ : When opening the monitor data by older version software, some functions/settings are invalid. (Warning message will appear when the data is opened.)
- △ : When opening the monitor data by older version software, some functions/settings are invalid and also data is corrupted. (Warning message will not appear when the data is opened.)
- : GT Designer cannot open the GT Designer2 format files.

(3) Solution

It is recommended to upgrade GT Designer to GT Designer2.

[Issue No.] T10-0030

[Page] 3/5

[Title] Precautions on the monitor data compatibility

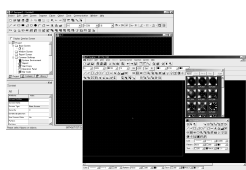
[Date of Issue] Oct., '03

[Relevant Models] GOT-A900 series

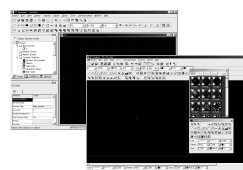
2. Uploading monitor data

(1) POINT

No problem occurs when the software version is the same or newer than the one used to download the monitor data into the GOT.



Software version used to upload the data



Software version used to download the data

(2) Precautions

When the monitor data is uploaded with the same or older software version than the one used to download it, some functions/settings are invalid due to version incompatibility.

The following table shows the compatibility between the software versions.

Software used to upload monitor data		Software used to download monitor data		
		GT Designer2	GT Designer	
		Version1	Version5.13P or later	Version1.00A to Version5.10L
GT Designer2	Version1	●	●	●
GT Designer	Version5.13P or later	▲*1	▲*2	●
	Version1.00A to Version5.10L	△	△	△

● : Compatible.

▲ : When uploading the monitor data by older version software, some functions/settings are invalid.

*1: Warning message will appear regardless of whether the data includes the settings of unsupported functions.

*2: Warning message will appear only when the data includes the settings of unsupported functions.

△ : When opening the monitor data by older version software, some functions/settings are invalid, and also the data is corrupted.

(Warning message will not appear when the data is opened.)

(3) Solution

It is recommend to upgrade GT Designer to GT Desginer2

[Issue No.] T10-0030

[Title] Precautions on the monitor data compatibility

[Relevant Models] GOT-A900 series

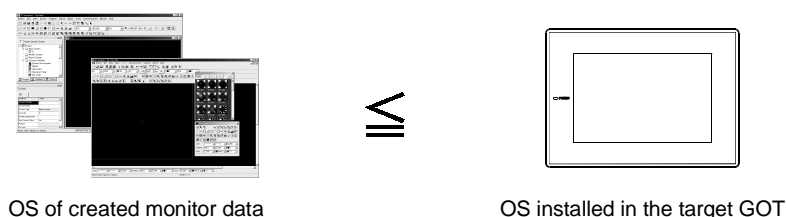
[Page] 4/5

[Date of Issue] Oct., '03

3. Downloading monitor data

(1) POINT

No problem occurs when the OS version of created monitor data is the same or older than the one installed in the target GOT.



(2) Precautions

When the monitor data is downloaded using the software with the same or newer OS version installed in the GOT, some functions/settings are invalid due to OS incompatibility.

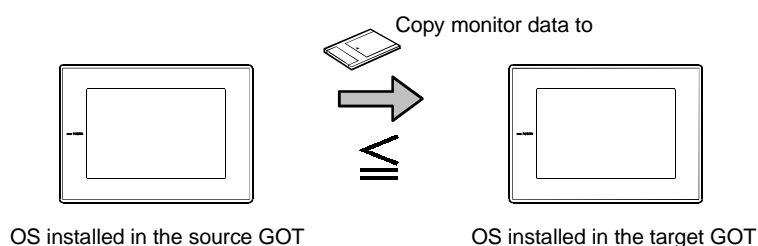
(3) Solution

It is recommended to reinstall the latest OS. (The OS version installed in GOT can be checked within the utility (internal memory information).)

4. Copying monitor data from one GOT unit to other unit with a PC card

(1) POINT

No problem occurs when the OS version in the target GOT is the same or newer than the one in the source GOT.



(2) Precautions

If the OS version in the target GOT is the same or older than the one in the source GOT, some functions/settings are invalid due to OS incompatibility.

(3) Solution

It is recommended to copy OS with monitor data into PC card, and copy them into the target GOT. (The OS version installed in GOT can be checked within the utility (internal memory information).)

[Issue No.] T10-0030

[Page] 5/5

[Title] Precautions on the monitor data compatibility

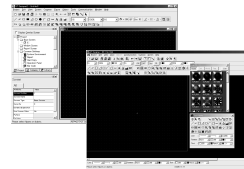
[Date of Issue] Oct., '03

[Relevant Models] GOT-A900 series

5. Opening monitor data with GT Simulator2/GT Simulator or GT SoftGOT2/GT SoftGOT



Software version used to open the data



Software version used to create the data

(1) POINT

No problem occurs when the software version is the same or newer than the one used to create the monitor data.

(2) Precautions

When the monitor data is opened with the same or older software version than the one used to create it, some functions/settings are invalid due to function incompatibility.

The following table shows the compatibility between the software versions.

Software used to open monitor data	Software used to create monitor data	
	GT Designer2	GT Designer
GT Simulator2	●	●
GT Simulator	-	▲
GT SoftGOT2	●	●
GT SoftGOT	-	▲

● : Compatible.

▲ : When opening the monitor data by older version software, some functions/settings are invalid.

- : GT Simulator and GT SoftGOT cannot open the GT Designer2 format files.

(3) Solution

It is recommend to upgrade GT Simulator/GT SoftGOT to GT Simulator2/GT SoftGOT2.