

Precautions When Updating the MELSEC MX Controller MX-F Model Firmware to Version "106"

■Date of Issue

October 2025

■Relevant Models

MXF100-8-N32, MXF100-8-P32, MXF100-16-N32, and MXF100-16-P32

Thank you for your continued support of Mitsubishi Electric Programmable Automation Controllers, MELSEC MX controller MX-F model.

This technical bulletin provides information on the precautions to take when updating the firmware of the MELSEC MX controller MX-F model.

1 APPLICABLE MODELS

Product	Model	Firmware version
MELSEC MX controller MX-F model	MXF100-8-N32, MXF100-8-P32, MXF100-16-N32, MXF100-16-P32	"105" or earlier

2 POSSIBLE PHENOMENA

The following table lists the phenomena that will occur when the firmware of the MELSEC MX controller MX-F model is updated to version 106. (A memory error (Error code: 3C24H) will occur.)

Data held in the memory area	Impact of update	Data backup	Data recovery
Device latch data	Initialized to "0".	Available	Available
Label latch data	Initialized to "0".	Available	Available
Axis absolute position data	Initialized to "0".	Not available	Not available
Event history (For motion control)	Deleted.	Available	Not available
Number of filters of error event history (SD974 to SD977)	Initialized to "0".	Not available	Not available
Data logging settings	Initialized to "Stop".	Not available	Not available

Follow the procedure below to back up or recover data when updating the firmware.

📄 Page 2 HOW TO BACK UP OR RECOVER DATA

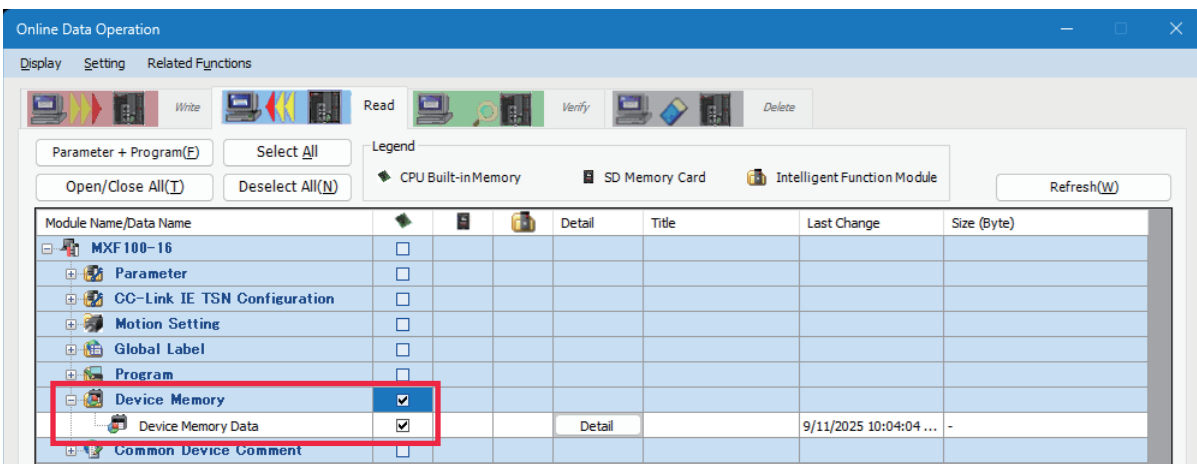
3 HOW TO BACK UP OR RECOVER DATA

This chapter describes the procedure to back up or recover data for the firmware update.

Device latch data

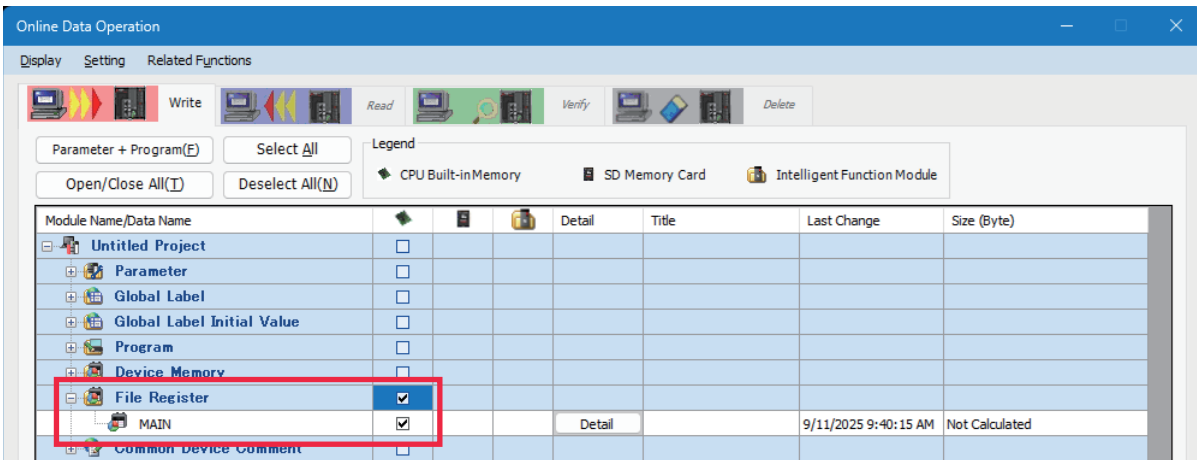
■Data backup procedure

1. Open the GX Works3 project. Click [Online] ⇒ [Read from PLC].
2. Click the [Read] tab in the "Online Data Operation" window.
3. Check [Device Memory].
4. Click [Execute].



■Data recovery procedure

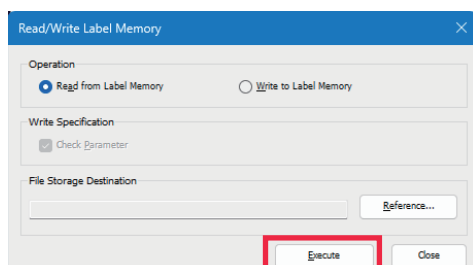
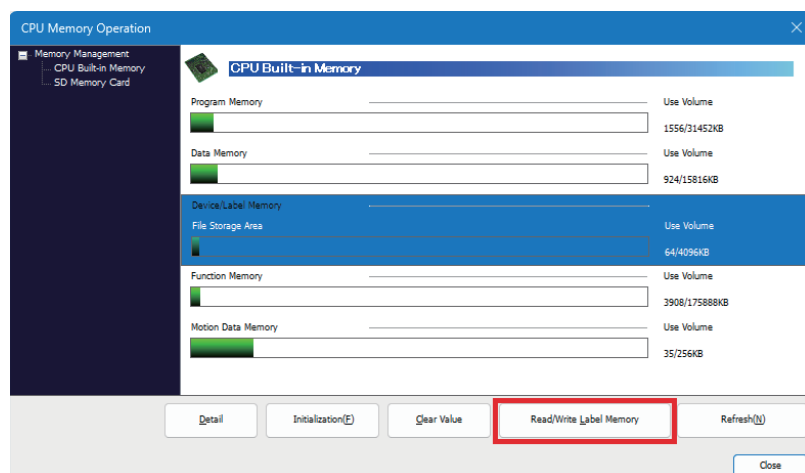
1. Open the project that was used when the data was backed up. Click [Online] ⇒ [Write to PLC].
2. Click the [Write] tab in the "Online Data Operation" window.
3. Check [Device Memory].
4. Click [Execute].



Label latch data**■ Data backup procedure**

1. Open the GX Works3 project. Click [Online] ⇒ [CPU Memory Operation].
2. Select "Device/Label Memory" under "CPU Built-in Memory" in the "CPU Memory Operation" window.
3. Click [Read/Write Label Memory].
4. Specify the storage location in the "File Storage Destination" field of the "Read/Write Label Memory" window.
5. Select "Read from Label Memory", and click [Execute].

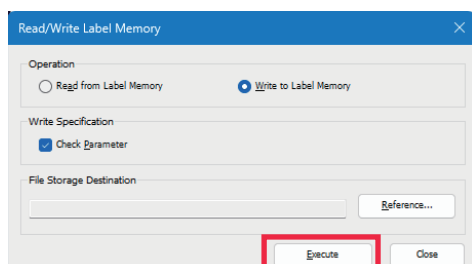
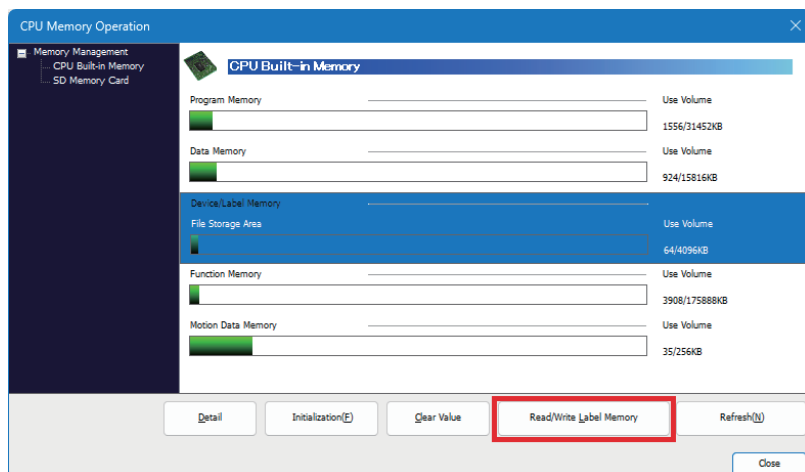
The "BackupData" folder is created in the storage location specified in Step 4, and label memory is stored in file format.



FAM-A-0109-A

■ Data recovery procedure

1. Open the GX Works3 project. Click [Online] ⇒ [CPU Memory Operation].
2. Select "Device/Label Memory" under "CPU Built-in Memory" in the "CPU Memory Operation" window.
3. Click [Read/Write Label Memory].
4. Specify the "BackupData" folder that is created during the data backup procedure in the "File Storage Destination" field of the "Read/Write Label Memory".
5. Select "Write to Label Memory", and click [Execute].



Motion axis absolute position data

■ Data backup procedure

The data cannot be backed up or recovered.

■ Data recovery procedure

When the axis absolute position data is initialized due to the firmware update, the absolute position data incorrect warning (Event code: 00D00H) will be detected and Homing request (AxisName.Md.Homing_Request) will be set to TRUE. Perform the Homing operation before restarting the device.

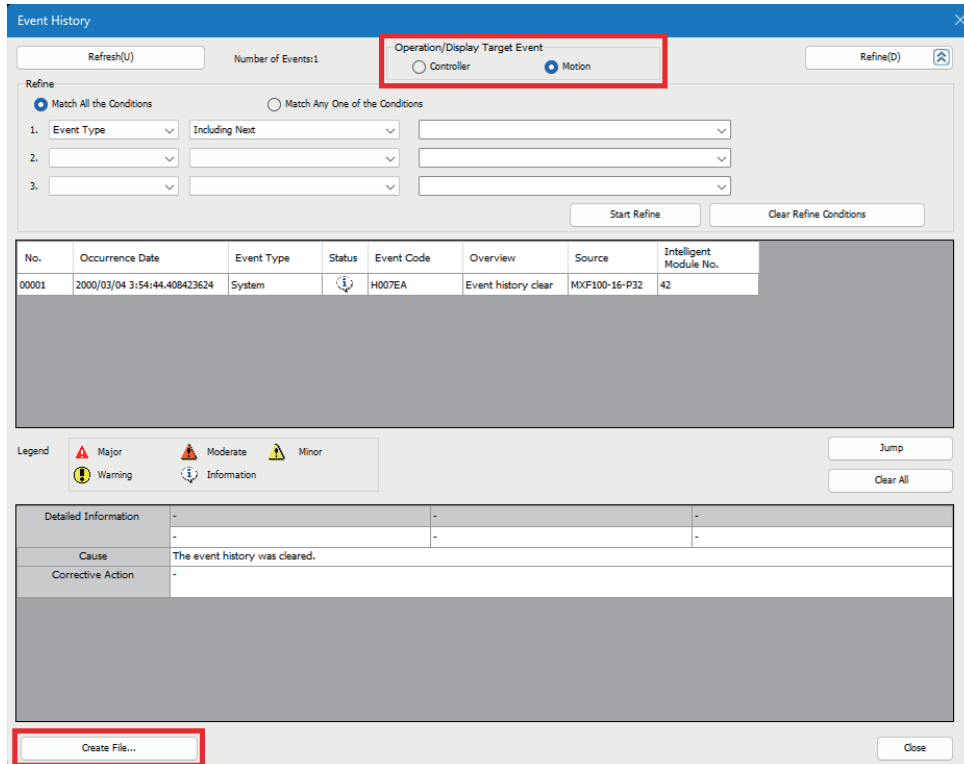
FAM-A-0109-A

Motion control event history

■ Data backup procedure

Select the motion event history and output it in file format.

 [Diagnostics] ⇒ [Module Diagnostics (CPU Diagnostics)]



Event History

Refresh(U) Number of Events:1 Operation/Display Target Event
☐ Controller ☒ Motion Refine(D)

Refine
☒ Match All the Conditions ☐ Match Any One of the Conditions

1. Event Type Including Next
 2.
 3.

Start Refine Clear Refine Conditions

No.	Occurrence Date	Event Type	Status	Event Code	Overview	Source	Intelligent Module No.
00001	2000/03/04 3:54:44.408423624	System		H007EA	Event history clear	MXF100-16-P32	42

Legend
 Major Moderate Minor
 Warning Information

Jump
Clear All

Detailed Information
 Cause The event history was cleared.
 Corrective Action

Create File... Close

■ Data recovery procedure

The data cannot be recovered.



After the firmware update, event history (for motion control) will begin recording without any past history. Back up the event history (for motion control) before the firmware update, if required.

Number of filters of error event history

■ Data backup/recovery procedure

The data cannot be backed up or recovered.



The number of filters is initialized to "0" due to the firmware update. Record the number before the firmware update, if required.

Latch information of the logging setting information

■ Data backup/recovery procedure

The data cannot be backed up or recovered.



If data logging starts (the data logging setting is registered), data logging will stop (the data logging setting is cleared) due to the firmware update. After the firmware update, perform the operation to start data logging again. If auto logging is set, data logging automatically restarts.

FAM-A-0109-A

REVISIONS

Version	Date of Issue	Revision
A	October 2025	First edition

TRADEMARKS

The company names, system names, and product names mentioned in this technical bulletin are either registered trademarks or trademarks of their respective companies.

In some cases, trademark symbols such as '™' or '®' are not specified in this technical bulletin.