

TECHNICAL BULLETIN

[Issue No.] T99-0074

[Page] 1/5

[Title] Operating procedure when MELSOFT cannot be installed **[Date of Issue]** Oct., '06

[Relevant Models] Mitsubishi Integrated FA software MELSOFT series
GX series, PX series, MX series and GT series (GT Designer2, GT works2)

Thank you for your continued support of Mitsubishi Integrated FA software.

This BULLETIN explains the operating procedure when MELSOFT cannot be installed properly on some Windows® XP personal computers.

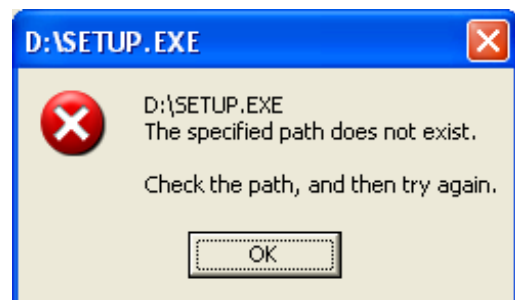
1. Problem

On some Windows® XP personal computers, one of the following dialog boxes appears during MELSOFT installation, and installation processing is interrupted due to incompatible combination with pre-installed software.

(Followings are the message examples when the CD-ROM drive is the D drive (D:). If the drive other than “D” is used, change its reading from “D” to the set drive.)



or,



[Issue No.] T99-0074

[Page] 2/5

[Title] Operating procedure when MELSOFT cannot be installed [Date of Issue] Oct., '06

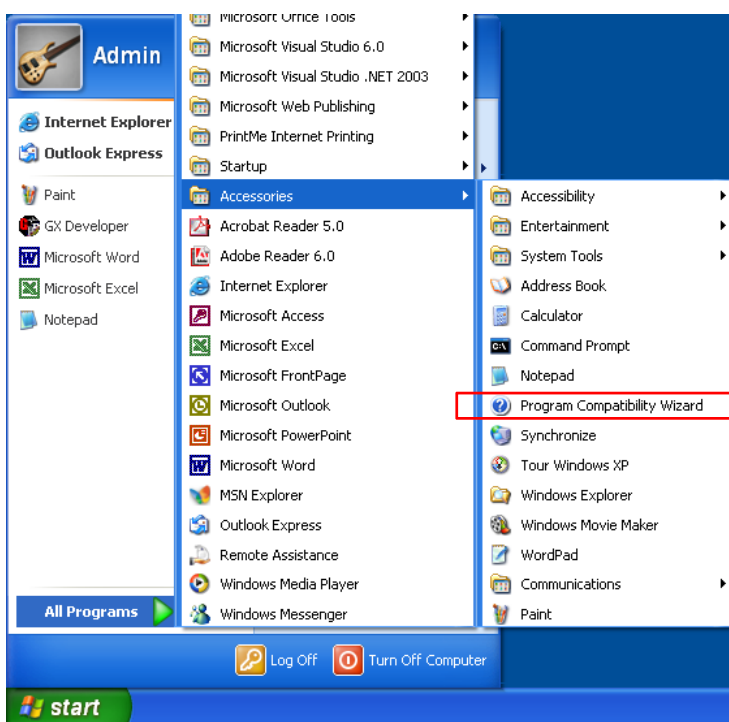
[Relevant Models] Mitsubishi Integrated FA software MELSOFT series
GX series, PX series, MX series and GT series (GT Designer2, GT works2)

2. Operating procedure

Use Windows® XP “Program Compatibility Wizard” to install Environmental setting program (EnvMEL) and MELSOFT such as GX developer.

[Installing EnvMEL]

- (Step 1) Insert MELSOFT CD-ROM to the CD-ROM drive.
- (Step 2) Click [Start], and select [All Programs] - [Accessories] - [Program Compatibility Wizard].



TECHNICAL BULLETIN

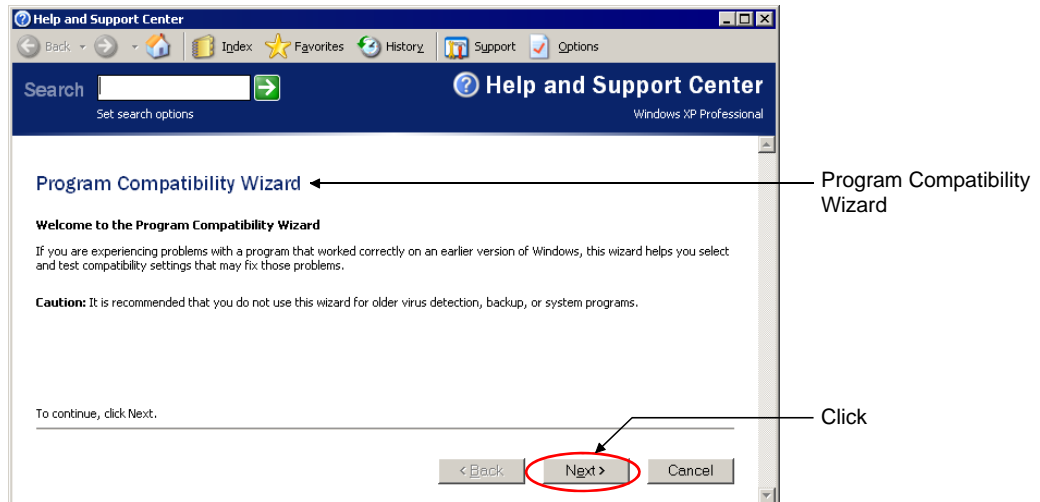
[Issue No.] T99-0074

[Page] 3/5

[Title] Operating procedure when MELSOFT cannot be installed [Date of Issue] Oct., '06

[Relevant Models] Mitsubishi Integrated FA software MELSOFT series
GX series, PX series, MX series and GT series (GT Designer2, GT works2)

(Step 3) Click [Next] in the “Program Compatibility Wizard”.



(Step 4) When you receive the prompt, “How do you want to locate the program that you would like to run with compatibility settings?”, perform the following operations.

1. Select I want to locate the program manually.
2. Click [Next].

(Step 5) When you receive the prompt, “Which program do you want to run with compatibility settings?”, perform the following operations.

1. Input the EnvMEL path to be installed from the CD-ROM.

2. Click [Next].

(Step 6) When you receive the prompt, “Select a compatibility mode for the program”, perform the following operations.

1. Select Microsoft Windows 2000.
2. Click [Next].

(Step 7) When you receive the prompt, “Select display settings for the program”, it is unnecessary to select anything. Click [Next].

TECHNICAL BULLETIN

[Issue No.] T99-0074

[Page] 4/5

[Title] Operating procedure when MELSOFT cannot be installed **[Date of Issue]** Oct., '06

[Relevant Models] Mitsubishi Integrated FA software MELSOFT series
GX series, PX series, MX series and GT series (GT Designer2, GT works2)

- (Step 8) When you receive the prompt, “Test your compatibility settings”, perform the following operations.
1. Confirm the EnvMEL path entered in step 5, and the compatibility mode for the program selected in step 6.

Test your compatibility settings

Program name or path:

D:\EnvMEL\SETUP.EXE

Compatibility settings to apply:

Microsoft Windows 2000

2. Click [Next]

(Step 9) “SETUP.EXE” is executed, and installation begins.

(Step 10) Upon completion of the installation, the screen returns to the “Program Compatibility Wizard”.

(Step 11) When you receive the message, “Did the program work correctly?”, perform the following operations.

1. Select Yes, set this program to always use these compatibility settings .
2. Click [Next].

(Step 12) When you receive the message at “Program Compatibility Data”, perform the following operations.

1. Select No .
2. Click [Next].

(Step 13) This completes the installation of Environmental setting program (EnvMEL).
Click [Finish] and close the “Program Compatibility Wizard”.

TECHNICAL BULLETIN

[Issue No.] T99-0074

[Page] 5/5

[Title] Operating procedure when MELSOFT cannot be installed **[Date of Issue]** Oct., '06

[Relevant Models] Mitsubishi Integrated FA software MELSOFT series
GX series, PX series, MX series and GT series (GT Designer2, GT works2)

[Installing MELSOFT]

Following procedure installs all MELSOFT to be used.

(Step 14) Follow the Step 2 through Step 4 again.

(Step 15) When you receive the prompt, "Which program do you want to run with compatibility settings?", perform the following operations.

1. Input the MELSOFT path to be installed from the CD-ROM.
(The path differs for each MELSOFT. *1)

D:\SETUP.EXE

Browse

*1: Input the following path for GT Designer2 / GT Works2.

D:\GTD2\SETUP.EXE

Browse

2. Click [Next].

(Step 16) Follow the Step 6 through Step 12 again.

(Step 17) This completes the installation of MELSOFT.
Click [Finish] and close the "Program Compatibility Wizard".

Microsoft, Windows are registered trademarks of Microsoft Corporation in the United States and other countries.
Other company and product names herein are trademarks or registered trademarks of their respective owners.
In this bulletin, ® is abbreviated.