

# MITSUBISHI

Mitsubishi Electric Corporation **Industrial** Robot

## MELFA Technical News

BFP-A6079-0023E

November 2010

**Subject:** Report of RT ToolBox2 version 1.7 release

**Applicable to:** S series, SQ series, SD series  
(CRn-500/CRnQ-700/CRnD-700 series robot controller)

Thank you for your continued support of Mitsubishi industrial robot "MELFA".

This Technical news describes the new version of the RT ToolBox2.

### 1. Additional model

Add the following models.

RH-3SDHR3515 / RH-3SQHR3515

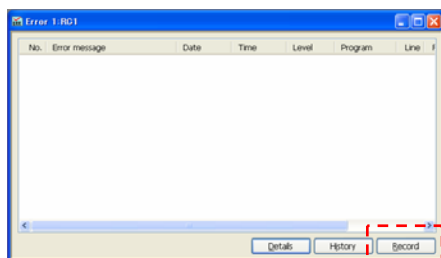
### 2. Function improvement

#### 2.1 Corresponds to Windows7.

- Windows 7 Home Premium
- Windows 7 Professional
- Windows 7 Ultimate

#### 2.2 Error record function

The frequency of the error being preserved by the controller is displayed according to the level.



Error monitor

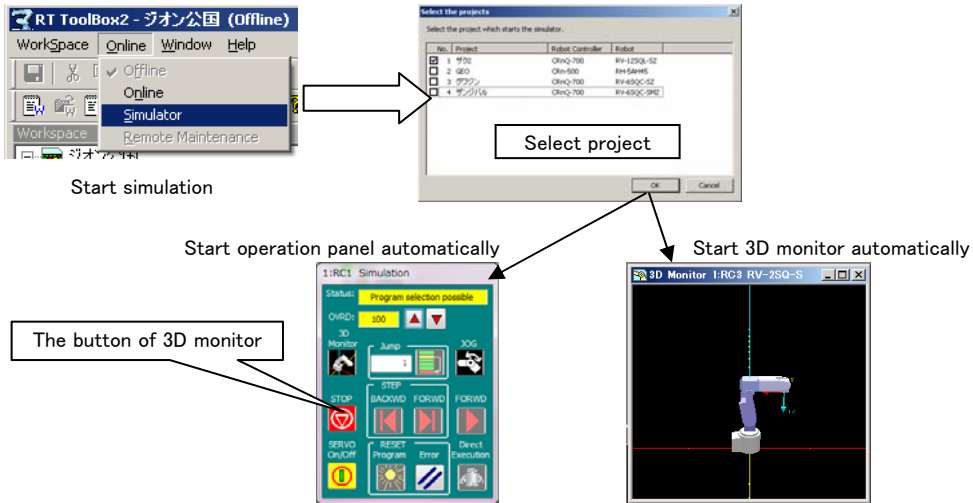


No.	Error message	Level	Detail	Frequency	Last date
1781	サーボとMPNは原点設定できません	Caution	178100100	1	10-01-20 11:18:32
2000	サーボがオフしています	Low	200000000	11	10-01-20 11:18:32
2602	自らの位置が動作範囲外です	Low	260200100	5	10-01-20 11:18:32
4130	プログラム名として使用できません	Low	413000000	1	10-01-20 11:18:32
4220	入力した半半次の種別は誤りです	Low	422000000	2	10-01-20 11:18:32
4340	命令が書き込み禁止に設定され...	Low	434000000	3	10-01-20 11:18:32
4320	変数が書き込み禁止に設定され...	Low	432000000	7	10-01-20 11:18:32
6800	種別入力状態を解除します。電源...	Low	680000000	1	10-01-20 11:18:32
7600	付加軸への動作異常	High	760000000	1	10-01-20 11:18:32

Error record

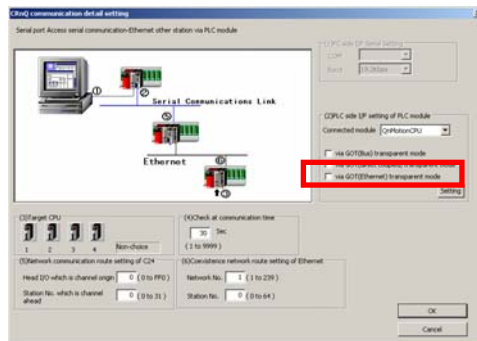
### 2.3 3D monitor is displayed automatically.

3D monitor screen opened additionally at the same time in the display of the operation panel when the simulator was started.  
 Moreover, 3D monitor button is arranged in the operation panel, and the window can be opened easily.



### 2.4 GTO(Ethernet) transparent mode was added.

GOT (Ethernet) transparent mode was added. As a result, GOT transparent function can be used with the sequencer connected with GOT by way of Ethernet.



CRnQ communication detail setting (USB)

### 2.5 The JOG mode of the simulation was added.

The 3-axis XYZ/Cylinder jog was added to the JOG mode of the simulation.

