

# MITSUBISHI

Mitsubishi Electric Corporation **Industrial** Robot

## MELFA Technical News

BFP-A6079-0112E

December 2013

**Subject:** Report of R56TB/R57TB Version 3.2 release**Applicable to:** F series, S Q series, S d series  
(CR750-Q/ CR750-D/ CRnQ-700/ CRnD-700 series robot controller)

Thank you for your continued support of Mitsubishi industrial robot "MELFA".  
This Technical news describes the new version 3.2 of **R56TB/R57TB**.

R56TB: CR750-Q/D, CRnQ/D-700

R57TB: CR751-Q/D

No	Robot model	CR750/700 series Robot Controller	CR500 series Robot Controller
1	Vertical 6-axis robot	Version R3e/S3e or later	not use
2	Vertical 5-axis robot	not use	
3	Horizontal 4-axis robot	Version R3e/S3e or later	

### 1. Function improvement

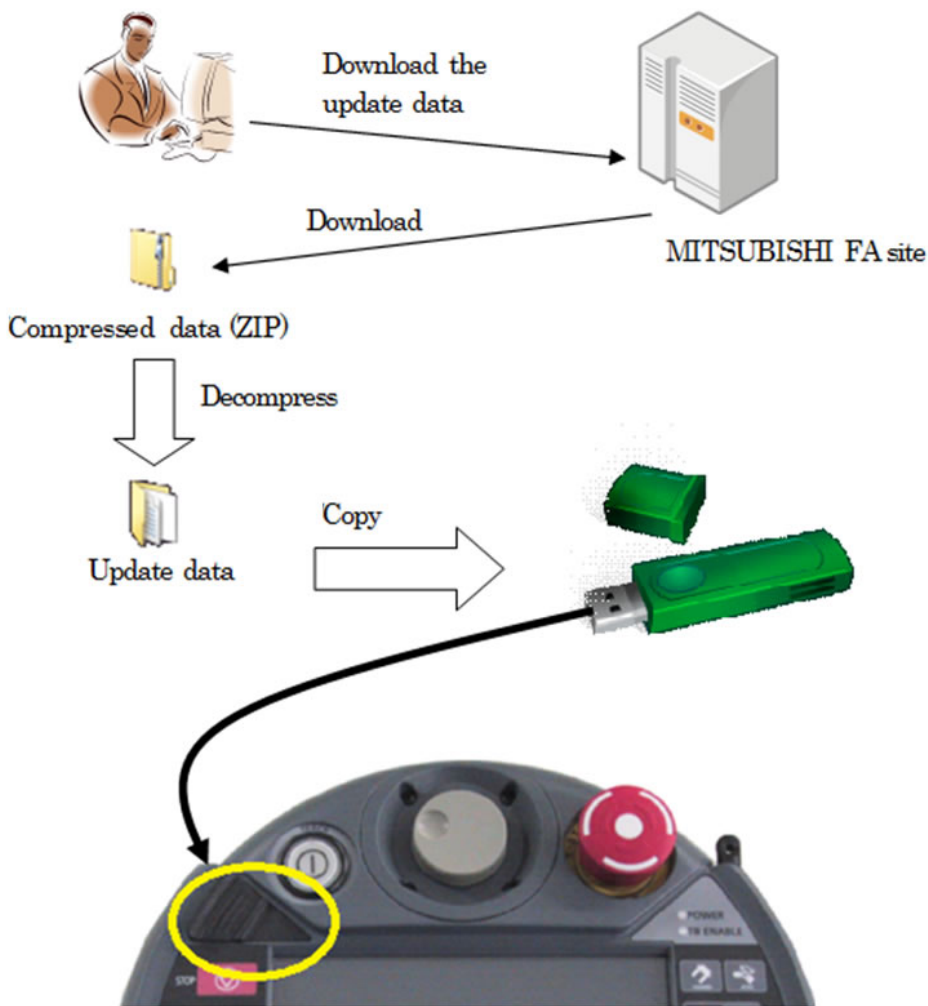
- The buzzer muffling function with built-in teaching box was added.
- Add the parameter editor screens.
  - Robot additional axis parameter (17.4.15)
  - Collision detection parameter (17.4.16)
  - Warm-up operation parameter (17.4.17)
  - Movement parameter (17.4.18)
  - Program parameter (17.4.19)
  - User error parameter (17.4.20)
  - Ethernet parameter (17.4.21)
  - Multiple CPU parameter (17.4.22)
  - CC-Link parameter (17.4.23)
  - PROFIBUS parameter (17.4.24)
  - Real-time external control command parameter (17.4.28)
- Add the software update function.

※ (\*.\*.\*) Item of manual

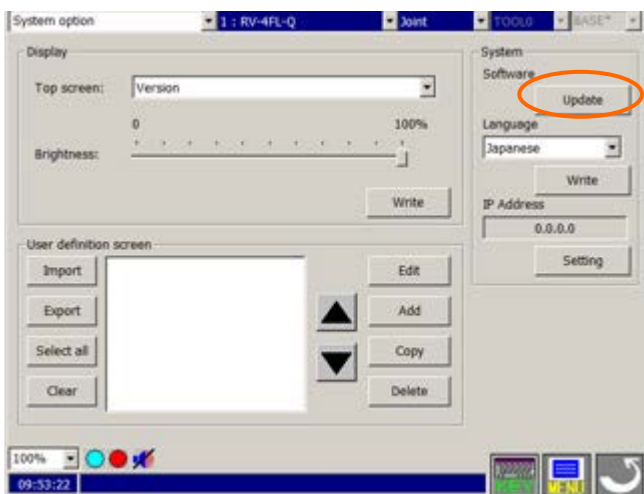
The new T/B software and update tool of can be downloaded and updated from the Mitsubishi FA site.

Download from MITSUBISHI FA site the new version of the T/B software and the Update tool.

<http://www.mitsubishielectric.co.jp/fa/>

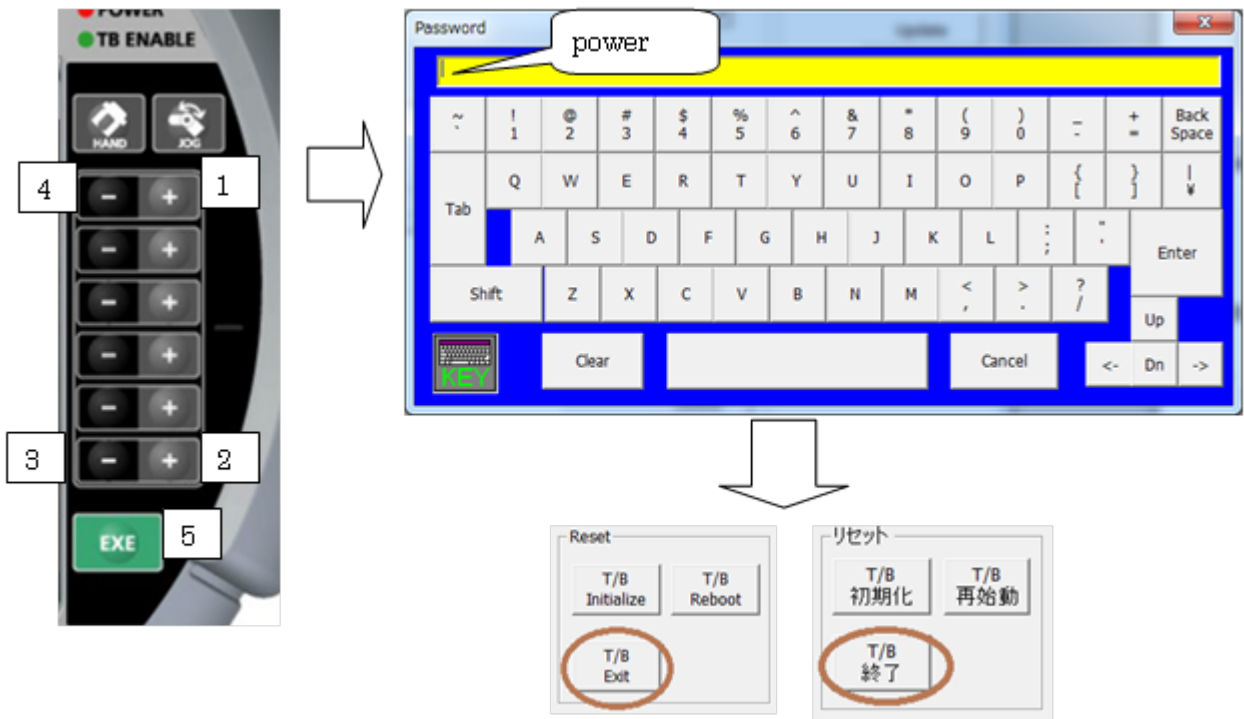


Tap [Update] button of the System option screen.



(When updating from software older than Version 3.2 )

- ① Since a password entry screen will be displayed if the next operation is carried out on a system option screen, "power" is inputted.
- ② The tap of the [T/B Exit] button displayed on the system option screen is carried out, and application is terminated.



- ③ By the Explorer of Windows CE, MELFA\_TB\_Update.exe of (Hard disk) in a USB memory is started.

