

**Subject:** Report of RT ToolBox2 Version 3.30G release**Applicable to:** F series, SQ series, SD series, S series  
(CR750/CRnQ-700/CRnD-700/CRn-500 series robot controller)

Thank you for your continued support of Mitsubishi industrial robot "MELFA".

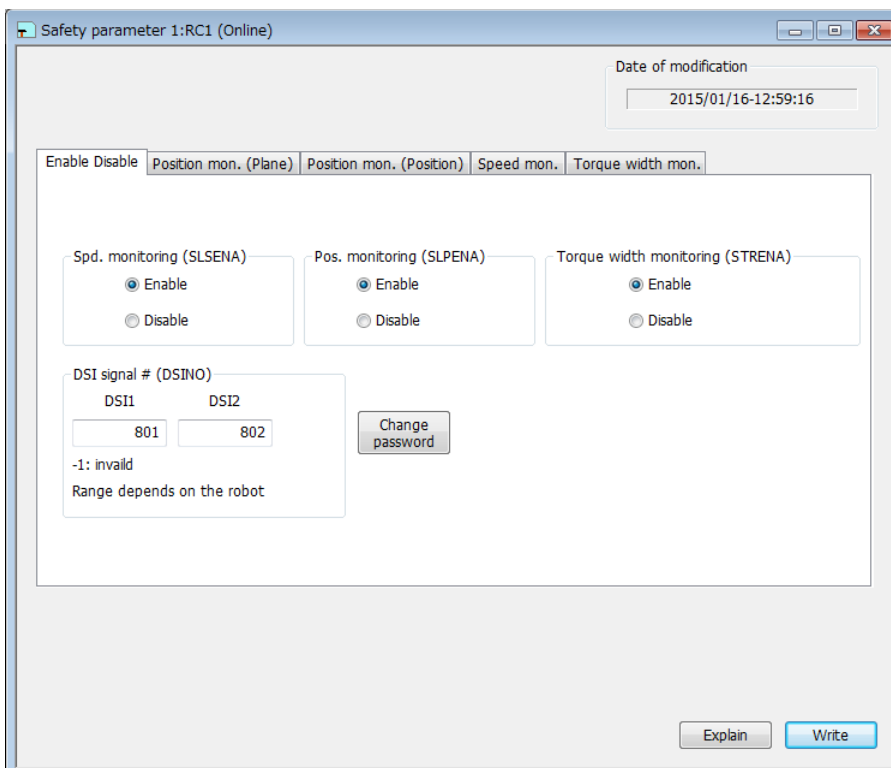
This Technical news describes the new version 3.30G of the RT ToolBox2. 3D-11C-WINJ(E)/3D-12C-WINJ(E)

In order to use the functions described in this technical news, you need to download the latest version from MITSUBISHI ELECTRIC FA site, and upgrading the RT ToolBox2.

## 1. Parameter

### ● Added "Safety" parameter" screen

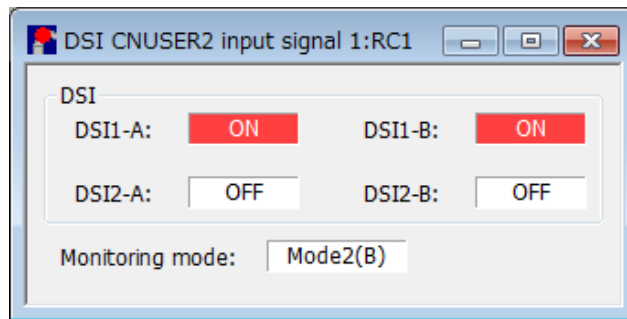
You can set parameters of Robot Safety Option in the robot controllers



## 2. Monitor

- Added “DSI CNUSER2 input signal” monitor screen.

You can monitor DSI1 and DSI2 input signals and Monitoring mode. DSI1 and DSI2 input signals are used for switching monitoring mode of safety monitoring function.

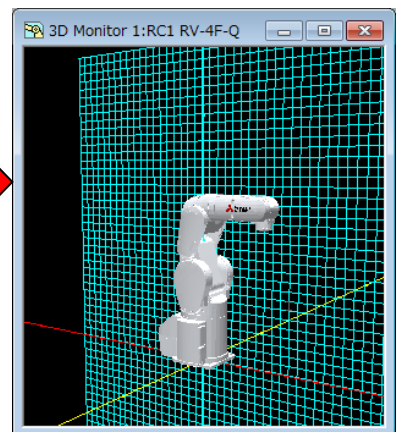
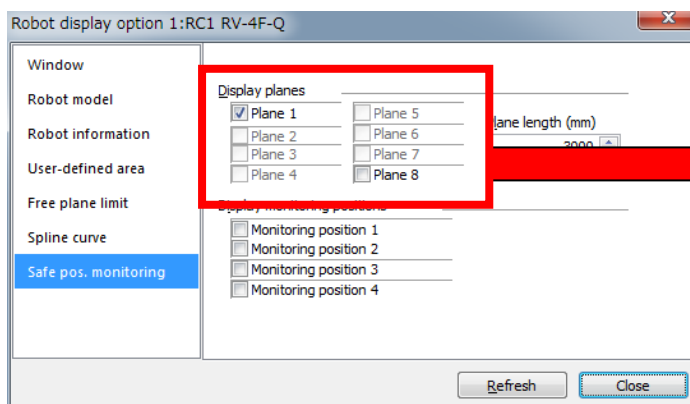


## 3. 3D monitor

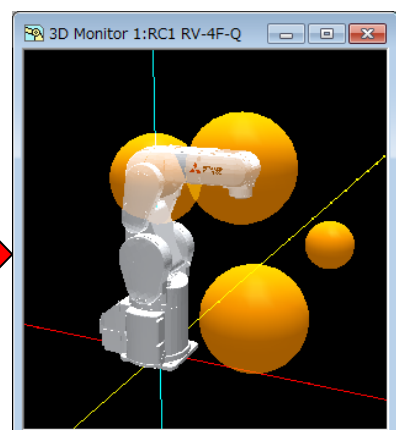
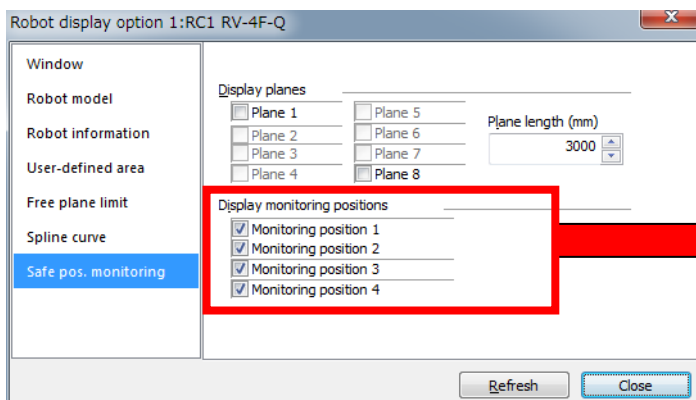
- Added the function “Safe pos. monitoring” to “Robot display option”.

If [Display planes] checkboxes are ON, The planes which were set on “Position mon. (Plane)” screen of “Safety parameter” screen are shown on 3D Monitor. If [Display monitoring positions] checkboxes are ON.

The positions which were set on “Position mon. (Position)” screen of “Safety parameter” screen are shown on 3D Monitor.



Position mon. (Plane)



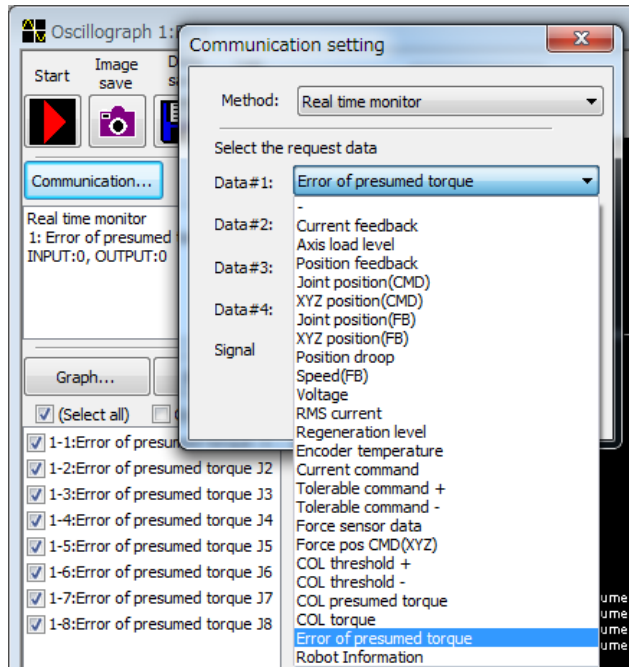
Position mon. (Position)

## 4. Oscillograph

- Added the function getting the "Error of presumed torque".

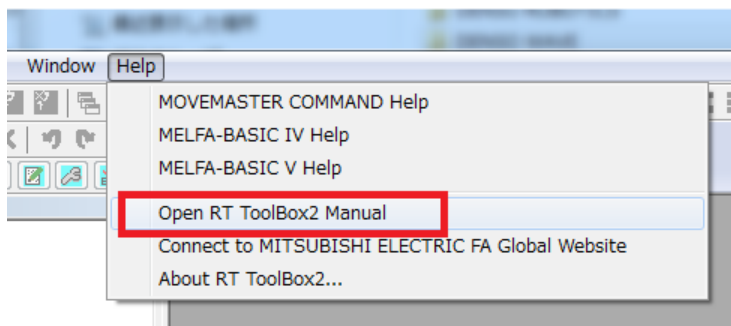
The absolute value of the error between the estimated torque and actual torque of each axis.

You can get this value only if the torque monitoring function of safety option is enabled.



## 5. Open the manual

The menu bar by clicking the [Help]->[RT ToolBox2 open the manual], it is possible to open the manual of RT ToolBox2.



## 6. Robot firmware update

- Added the function to update the firmware of the robot controller.

You can update the firmware of the robot controller.

This function is a for maintenance, operation method does not publish.

