

Subject: Report of RT ToolBox3 Ver.1.31H release

Applicable to: FR series, F series, SQ series, SD series, S series
(CR800/CR750/CR700/CR500 series robot controller)

Thank you for your continued support of Mitsubishi industrial robot “MELFA”.

This Technical news describes the new version 1.31H of the RT ToolBox3.
3F-14C-WINJ(E)／3F-15C-WINJ(E)／3F-16D-WINJ(E)

In order to use the functions described in this technical news, you need to download the latest version from MITSUBISHI ELECTRIC FA site, and upgrading the RT ToolBox3.

1. MELFA-Smart plus

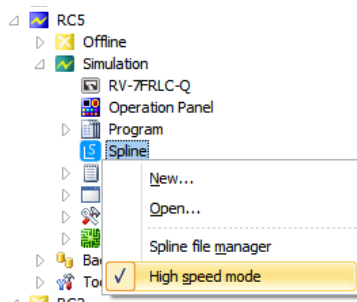
- It corresponds to MELFA-3D Vision 2.0 .
- It corresponded to the preventive maintenance function.

2. OS

- Windows 10 IoT Enterprise 2016 LTSC is supported.

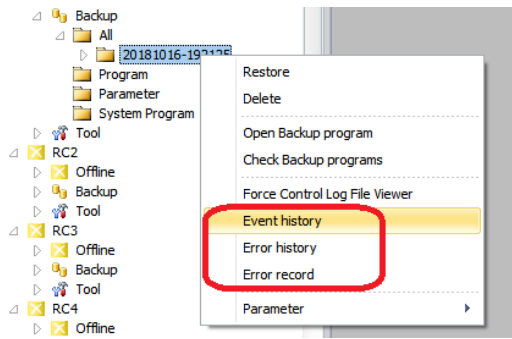
3. Spline

- It corresponds to spline high speed mode.

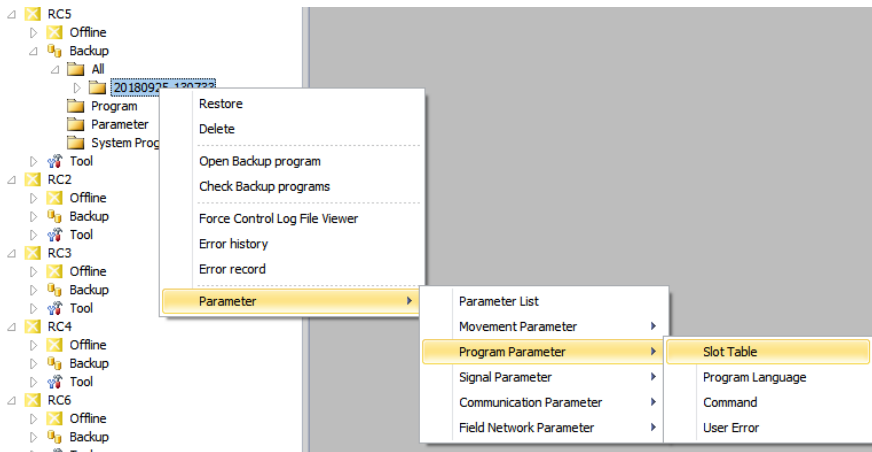


4. Backup data

- Added function that display event history, error history, error record from backup data.

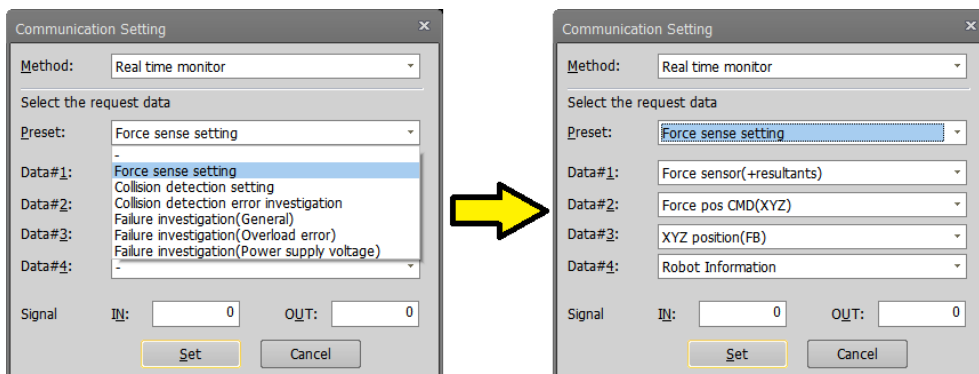


- Added parameter setting function of backup data.



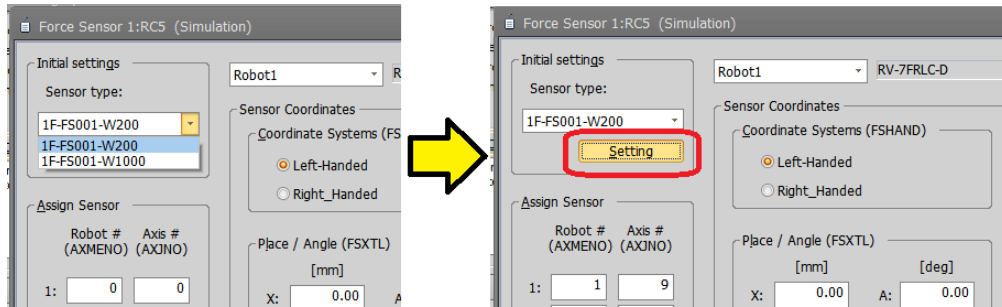
5. Oscillograph

- Add preset request data to the oscillograph.

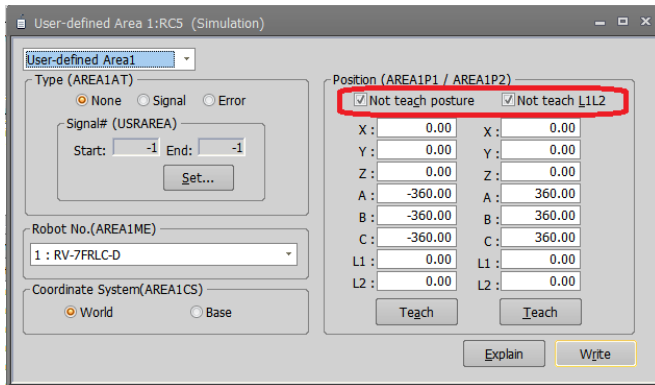


6. Parameter editor

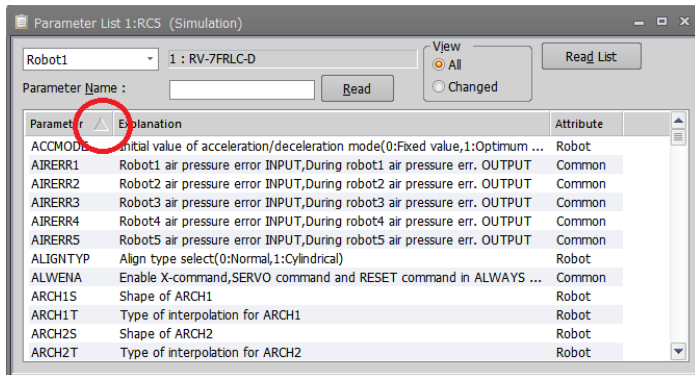
- Added initial setting function of force sensor.



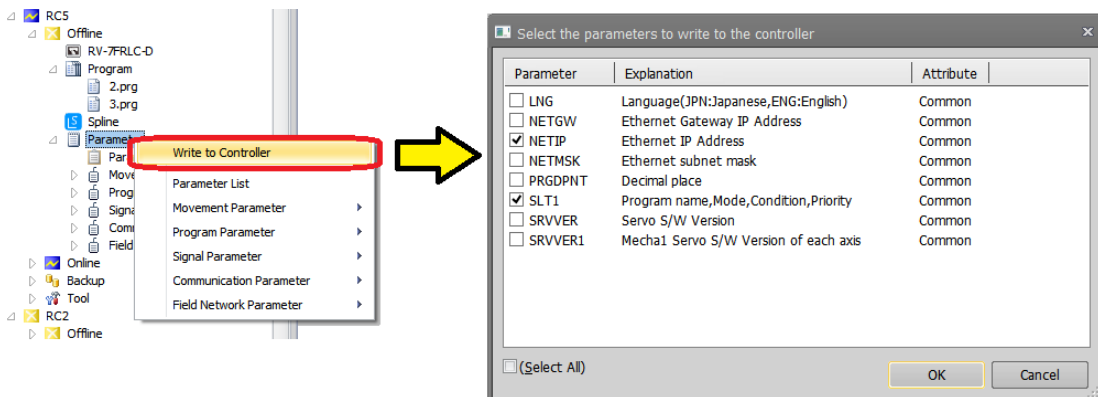
- Added function not to teach posture in user defined area.



- Added sort function of parameter list.



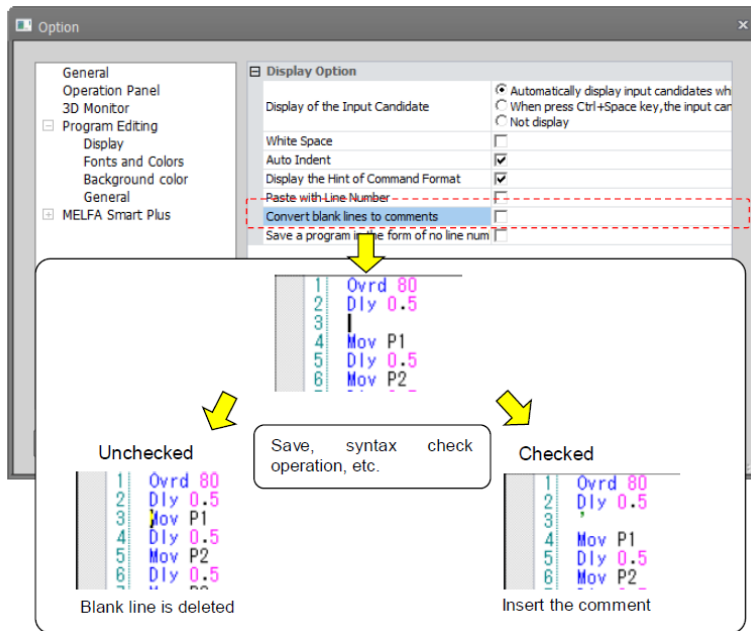
- Added function that write offline parameters to robot controller at the online mode.



7. Program editor

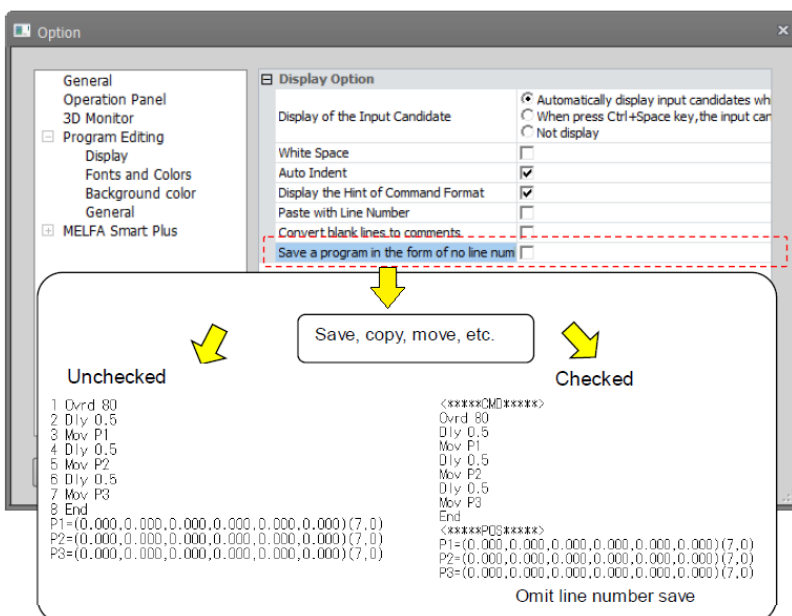
- Added function that convert blank lines to comments.

Insert the comment (" ") for a blank line when saving the program or checking the syntax. Please use if you don't want to automatically delete blank lines .

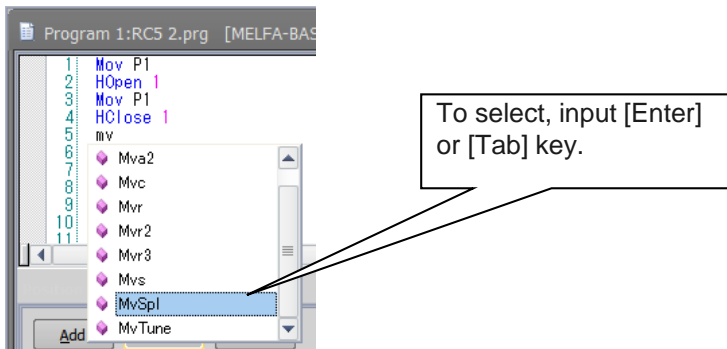


- Added function that save program in form of no number.

Save the program in the format with no line number (MELFA-BASEC V / MELFA-BASEC VI only) when saving offline program etc. There is no display change on the program editor.

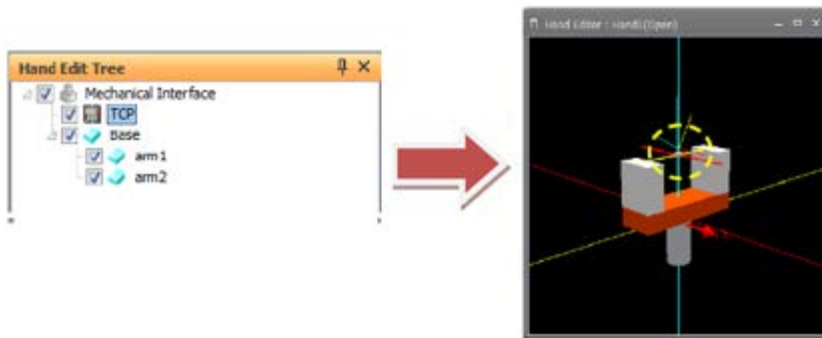


- Tab key can be used for selection of command input list.

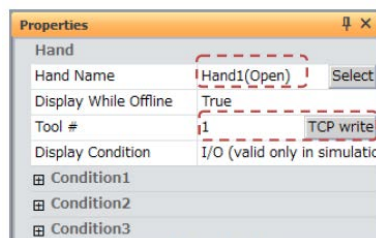


8. 3D monitor

- Added function that can set TCP (hand tip) at hand editing.



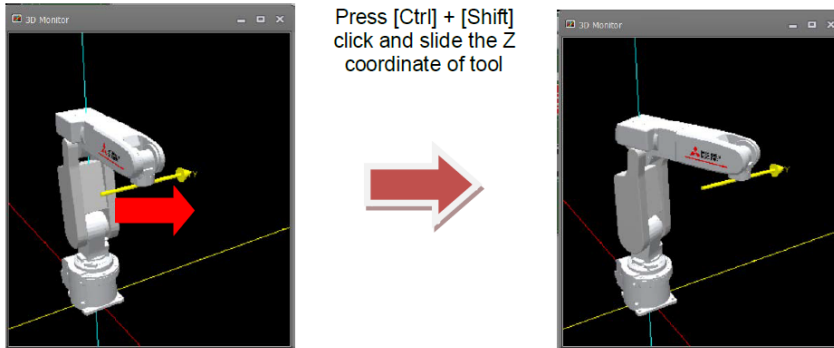
- Added function to write TCP (hand selection) to tool parameter from hand property.



- Added function that plane can also be output when layout objects are output in PLY format.

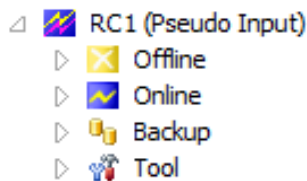
- Added function that move the robot by grasping the tool.

When displaying the robot tool coordinate system, while pressing [Ctrl] + [Shift], click and slide in the XYZ direction, and the robot control point will move in the direction of the grasped axis.



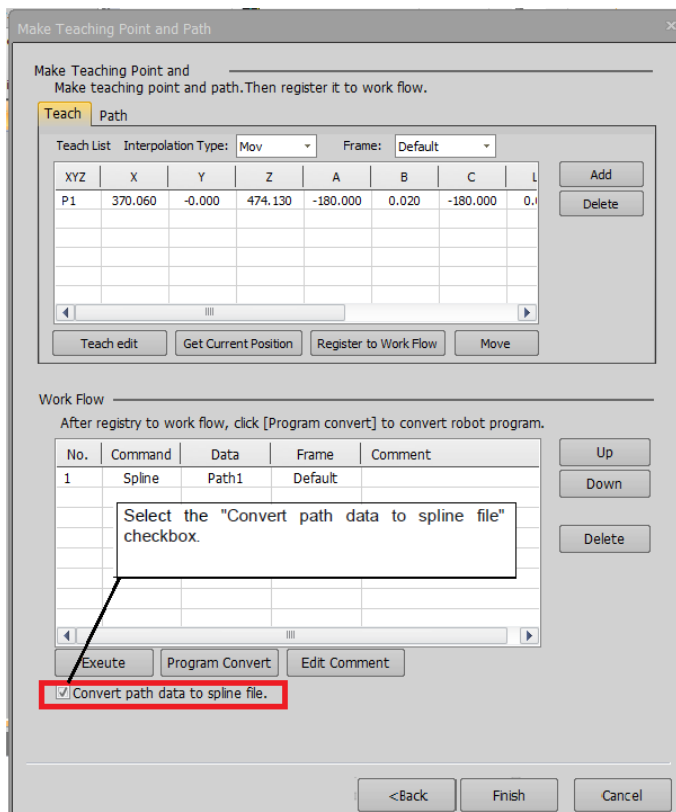
9. Project

- Added a function to display pseudo input mode in the project tree.



10. MELFA-Works

- Added function to convert the path to spline file on creation of work flow screen.



11. Trouble correction

- Fixed a bug that RT Toolbox 3 terminated abnormally when closing the program editing screen on a specific personal computer.
- Fixed a bug that CC-Link parameter of CR 500 could not be edited.
- Fixed a bug that CRnQ_R communication settings could not be set correctly when the communication server was started independently.
- Fixed a bug that the robot arrangement on the collision avoidance function screen was not set correctly for the layout of the robot.
- Fixed a bug that the layout file created by RT Toolbox2 can not be read correctly.
- Fixed a bug that the same signal can not be monitored by named signal monitor.

(End)